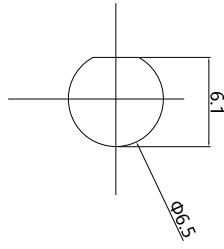
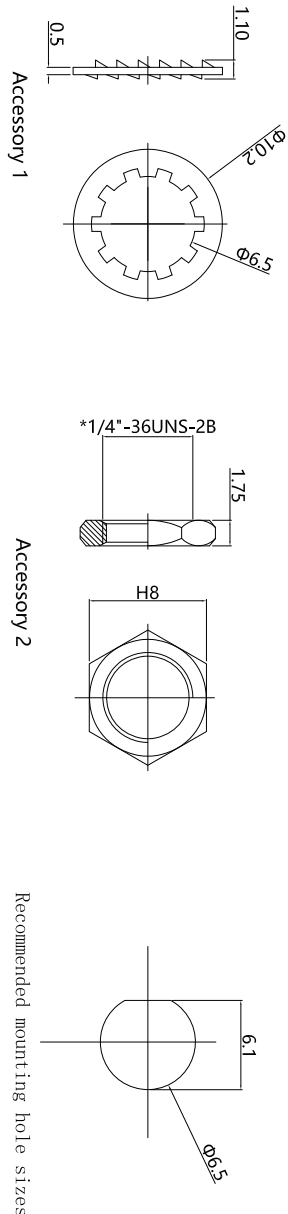
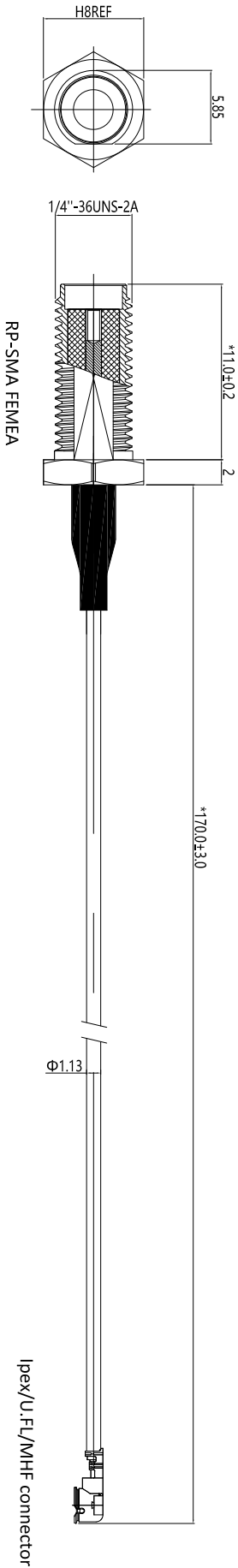


1	2	3	4	5	6	7	8
REV.	DESCRIPTION	APPD.	DATE				
A	INITIAL RELEASED	Chen	2021/07/20				



Recommended mounting hole sizes

- TYPICAL SPECIFICATIONS**
- 1.0.ELECTRICAL**
- 1.1.FREQUENCY RANGE: DC-6GHZ
 - 1.2.NOMINAL IMPEDANCE: 50 Ohm
 - 1.3.WORKING VOLTAGE:335V MAX.
 - 1.4.PROOF VOLTAGE:750V
 - 1.5.VSWR:1.4 MAX.
- 2.0.MECHANICAL**
- 2.1.TORSIONAL:15IN-1BS MIN.
 - 2.2.PLUGGABLE:500
- 3.0.ENVIRONMENTAL**
- 3.1.OPERATING TEMPERATURE RANGE: -55°C TO +125°C
 - 3.2.SALT SPRAY:48HOURS
 - 3.3.ROHS COMPLIANT
 - 3.4.REACH COMPLIANT

DIMENSIONS ARE IN MILLIMETERS UNLESS OTHERWISE SPECIFIED		CUS P/N:	Adapter cable		TITLE: Adapter cable		
TOLERANCES ANGLES = ±3° UP TO 6 = ±0.1 6-40 = ±0.2 40-120 = ±0.6 120-315 = ±1.0 ABOVE 315 = ±1.6		PART NO.: M00-0101680R0A		APPD:	DWG NO.:	SCALE	SHEET
				CHKD:		1:1	1/1
				DR:			REV. V01



Mouser Electronics

Authorized Distributor

Click to View Pricing, Inventory, Delivery & Lifecycle Information:

[Seeed Studio:](#)

[110061501](#) [110061502](#)