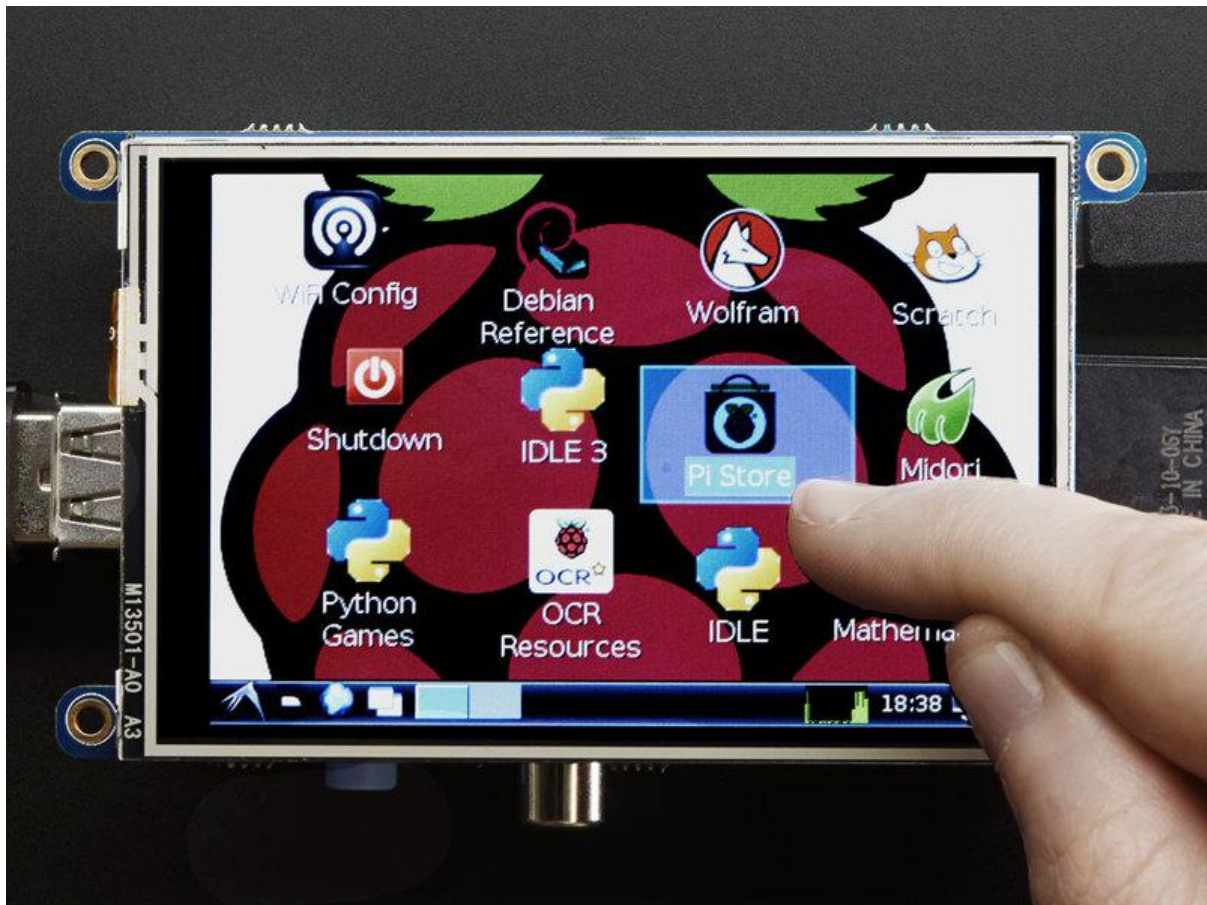




Adafruit PiTFT 3.5" Touch Screen for Raspberry Pi

Created by lady ada



<https://learn.adafruit.com/adafruit-pitft-3-dot-5-touch-screen-for-raspberry-pi>

Last updated on 2021-11-15 06:18:25 PM EST

Table of Contents

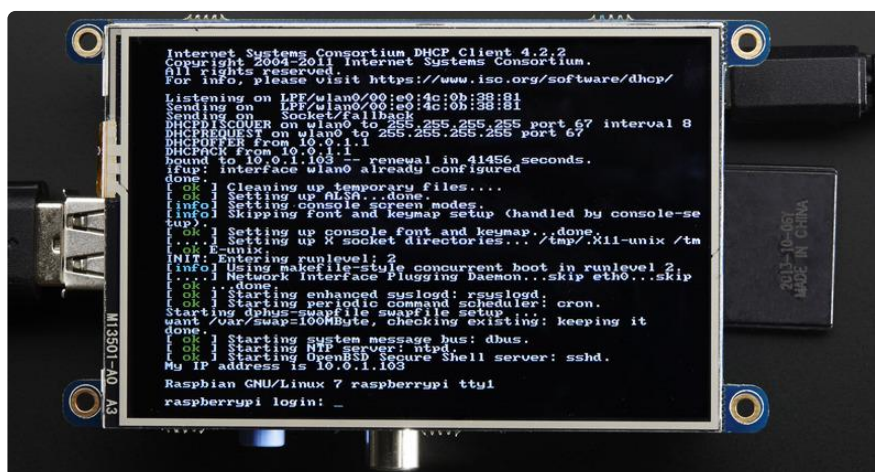
Overview	5
Easy Install	7
• Install Raspberry Pi OS on an SD Card	7
• Installer script	8
• Easy Single Command Install Options	8
• Interactive Installation	10
• Configuring what shows where	12
• PiTFT as Text Console (best for Raspberry Pi OS 'Lite')	12
• PiTFT as HDMI Mirror (Best for Raspberry Pi OS with Desktop)	13
• PiTFT as Raw Framebuffer Device	13
• Creating Your Own Automated Command	14
• Uninstalling The Driver	15
• Unsupported Full Images	15
• PiTFT 2.2" Images	16
• PiTFT 2.4"/2.8"/3.2" Resistive Images	16
• PiTFT 2.8" Capacitive	16
• PiTFT 3.5" Images	16
Resistive Touchscreen Manual Install & Calibrate	17
• Setting up the Touchscreen	17
• Running evtest	19
• AutoMagic Calibration Script	20
• Manual Calibration	20
• X Calibration	22
Console Configuration	24
• Turn off Console Blanking	26
• Raspbian Jessie	26
• Raspbian Wheezy	27
Displaying Images	27
Playing Videos	29
• How To Play Videos	29
• Converting/Resizing Videos	31
Using FBCP	33
Backlight Control	34
• PWM Backlight Control with GPIO 18	34
• Disabling Backlight Control	35
• On / Off Using STMPE GPIO	35
• On / Off Using GPIO for the Capacitive Display	36
• For older versions of PiTFT Kernel	36
• Python Backlight Control with Blinka	37
More Tips	38
• Making it easier to click icons in X	38
• Right-click on a touchscreen	39

Gesture Input	40
• Installation	40
• Usage	41
PiTFT PyGame Tips	43
• Install pip & pygame	43
• Ensure you are running SDL 1.2	44
• Using the Capacitive touch screen in PyGame	46
HELP! (FAQ)	46
Downloads	51
• Files	51
• Layout and Schematic for PiTFT Plus 3.5"	51
• Layout and Schematic for original PiTFT 3.5"	53

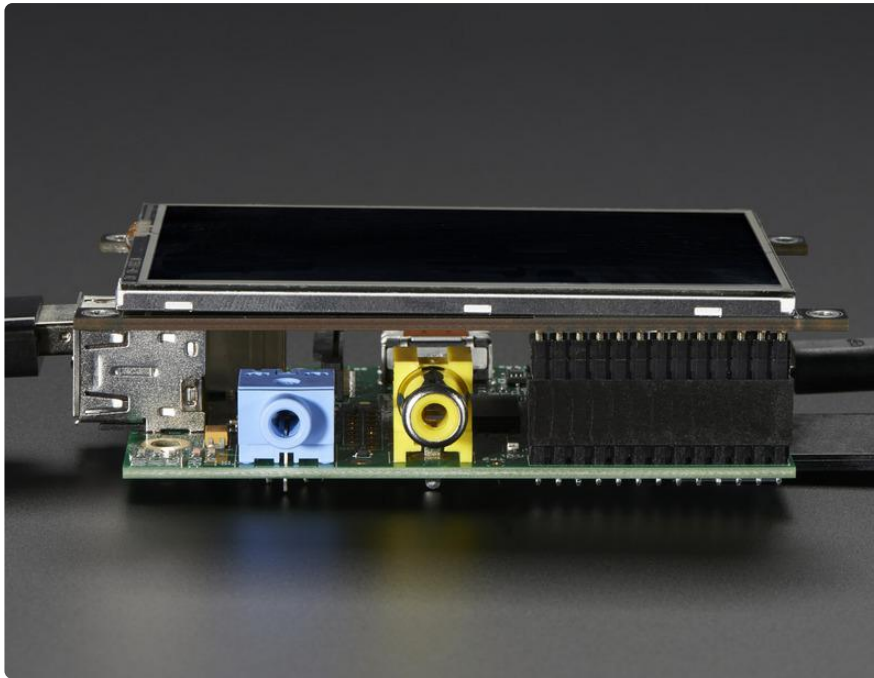
Overview



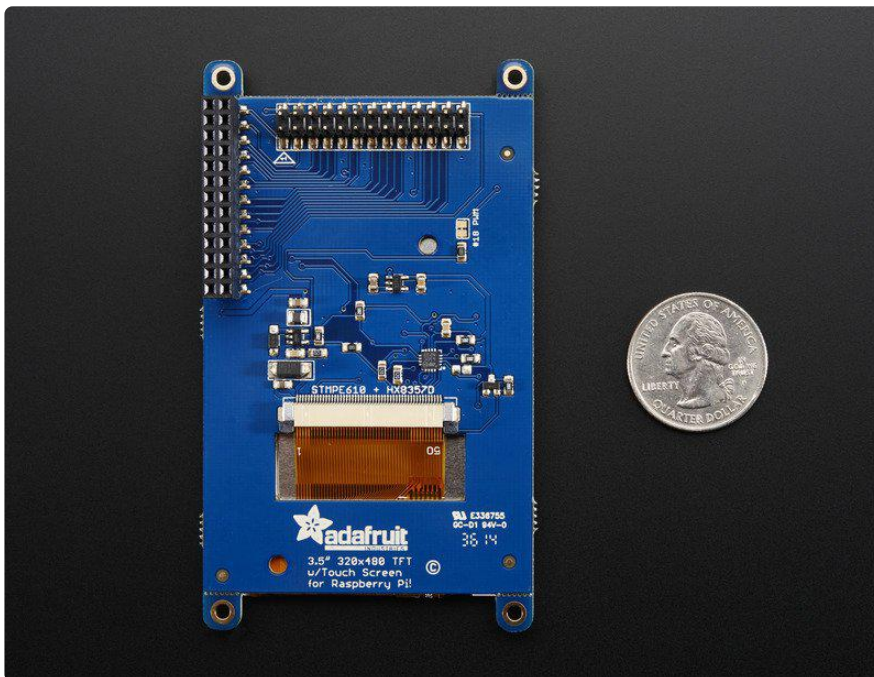
Is this not the cutest, little display for the Raspberry Pi? It features a 3.5" display with 480x320 16-bit color pixels and a resistive touch overlay, but is only slightly larger than [our popular original](https://adafruit.it/dDE) (<https://adafruit.it/dDE>). The plate uses the high speed SPI interface on the Pi and can use the mini display as a console, X window port, displaying images or video etc. Best of all it plugs right in on top!



It's designed to fit nicely onto the Pi Model A or B but also works perfectly fine with the Model B+ as long as you don't mind the PCB overhangs the USB ports by 5mm.



Uses the hardware SPI pins (SCK, MOSI, MISO, CE0, CE1) as well as GPIO #25 and #24. GPIO #18 can be used to PWM dim the backlight if you like. All other GPIO are unused. There's a 2x13 header on the bottom, you can connect a standard Pi GPIO cable to it to use any of the other pins as you like



Best of all, it comes fully assembled and ready to plug into your Pi! You can use this as a display for running the X interface, or pygame. You can also have an HDMI display separately connected.

Easy Install



The PiTFT requires some device tree support and a couple other things to make it a nice stand-alone display. If you just want to get going, check out the following for easy-install instructions!

The same installer is used for all PiTFTs, you will pick and configure the setup during installation!

Install Raspberry Pi OS on an SD Card

You'll need to start with Raspberry Pi OS or Raspberry Pi OS Lite.

The last known for-sure tested-and-working version is May 28, 2021 (https://downloads.raspberrypi.org/raspios_lite_armhf/images/raspios_lite_armhf-2021-05-28/ (<https://adafru.it/VGE>)) from https://downloads.raspberrypi.org/raspios_lite_armhf/images/ (<https://adafru.it/VHb>)

Raspberry Pi OS does often 'break' stuff when new versions come out so to be safe, if you are having problems try this version!

The latest Raspberry Pi Bullseye release is new and may have issues with the PiTFT. In that case, you can try the previous buster release.

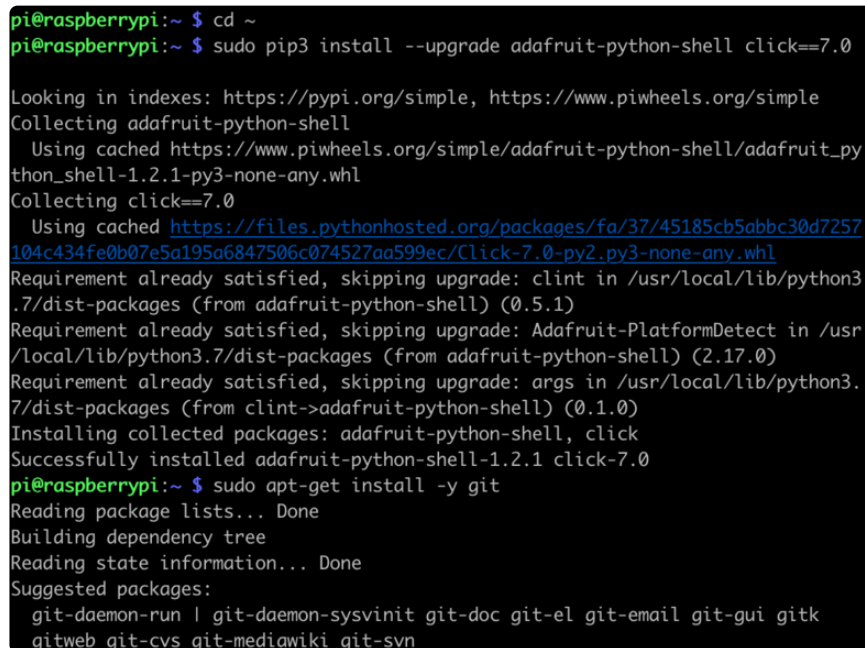
Installer script

This script will do all the work for you, and install both device tree overlay support as well as configure rotation and any HDMI mirroring. PiTFT no longer needs any custom kernels or modules, so you can continue to update/upgrade your Pi and it will work with the most recent releases.

Here's the commands to run. Make sure your Pi has network access, it needs to download the software!

The latest installer script was rewritten in Python, so it can be installed with just a few commands. First, start by installing a few dependencies and downloading the repo:

```
cd ~
sudo apt-get install -y git python3-pip
sudo pip3 install --upgrade adafruit-python-shell click
git clone https://github.com/adafruit/Raspberry-Pi-Installer-Scripts.git
cd Raspberry-Pi-Installer-Scripts
```



```
pi@raspberrypi:~ $ cd ~
pi@raspberrypi:~ $ sudo pip3 install --upgrade adafruit-python-shell click==7.0
Looking in indexes: https://pypi.org/simple, https://www.piwheels.org/simple
Collecting adafruit-python-shell
  Using cached https://www.piwheels.org/simple/adafruit-python-shell/adafruit_py
thon_shell-1.2.1-py3-none-any.whl
Collecting click==7.0
  Using cached https://files.pythonhosted.org/packages/fa/37/45185cb5abbc30d7257
104c434fe0b07e5a195a6847506c074527aa599ec/Click-7.0-py2.py3-none-any.whl
Requirement already satisfied, skipping upgrade: clint in /usr/local/lib/python3
.7/dist-packages (from adafruit-python-shell) (0.5.1)
Requirement already satisfied, skipping upgrade: Adafruit-PlatformDetect in /usr
/local/lib/python3.7/dist-packages (from adafruit-python-shell) (2.17.0)
Requirement already satisfied, skipping upgrade: args in /usr/local/lib/python3.
7/dist-packages (from clint->adafruit-python-shell) (0.1.0)
Installing collected packages: adafruit-python-shell, click
Successfully installed adafruit-python-shell-1.2.1 click-7.0
pi@raspberrypi:~ $ sudo apt-get install -y git
Reading package lists... Done
Building dependency tree
Reading state information... Done
Suggested packages:
  git-daemon-run | git-daemon-sysvinit git-doc git-el git-email git-gui gitk
  gitweb git-cvs git-mediawiki git-svn
```

Easy Single Command Install Options

The latest script allows you to specify all of your options within the command so you can sit back and watch the installation. We'll cover interactive installation below if you want to answer each prompt for a customized installation.

Console Install Commands

If you just want a console to appear on the display, you will want to use the following commands:

For the PiTFT 2.4", 2.8", or 3.2" Resistive touchscreens, use the following command:

```
sudo python3 adafruit-pitft.py --display=28r --rotation=90 --install-type=console
```

For the PiTFT 2.8" Capacitive touchscreen, use the following command:

```
sudo python3 adafruit-pitft.py --display=28c --rotation=90 --install-type=console
```

For the PiTFT 2.2" Display, use the following command:

```
sudo python3 adafruit-pitft.py --display=22 --rotation=90 --install-type=console
```

For the PiTFT 3.5" Resistive touchscreen, use the following command:

```
sudo python3 adafruit-pitft.py --display=35r --rotation=90 --install-type=console
```

For the Mini PiTFT 1.3", BrainCraft HAT, 1.3" Color TFT Bonnet, or 1.5" Display, use the following command:

```
sudo python3 adafruit-pitft.py --display=st7789_240x240 --rotation=0 --install-type=console
```

For the Mini PiTFT 1.14" Display, use the following command:

```
sudo python3 adafruit-pitft.py --display=st7789_240x135 --rotation=270 --install-type=console
```

FBCP Install Commands

If you just want to mirror the HDMI output to the display, which is known as FrameBuffer Copy or FBCP for short, you will want to use the following commands:

For the PiTFT 2.4", 2.8", or 3.2" Resistive touchscreens, use the following command:

```
sudo python3 adafruit-pitft.py --display=28r --rotation=90 --install-type=fbc
```

For the PiTFT 2.8" Capacitive touchscreen, use the following command:

```
sudo python3 adafruit-pitft.py --display=28c --rotation=90 --install-type=fbcp
```

For the PiTFT 2.2" Display, use the following command:

```
sudo python3 adafruit-pitft.py --display=22 --rotation=90 --install-type=fbcp
```

For the PiTFT 3.5" Resistive touchscreen, use the following command:

```
sudo python3 adafruit-pitft.py --display=35r --rotation=90 --install-type=fbcp
```

For the Mini PiTFT 1.3", BrainCraft HAT, 1.3" Color TFT Bonnet, or 1.5" Display, use the following command:

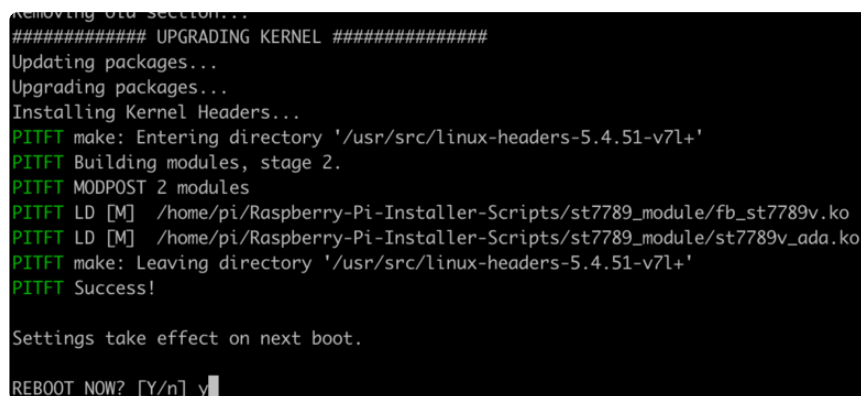
```
sudo python3 adafruit-pitft.py --display=st7789_240x240 --rotation=0 --install-type=fbcp
```

For the Mini PiTFT 1.14" Display, use the following command:

```
sudo python3 adafruit-pitft.py --display=st7789_240x135 --rotation=270 --install-type=fbcp
```

Rebooting

When it asks you to reboot, then choose yes because the setting won't take full effect until you do so.



```
removing old section...
##### UPGRADING KERNEL #####
Updating packages...
Upgrading packages...
Installing Kernel Headers...
PITFT make: Entering directory '/usr/src/linux-headers-5.4.51-v7l+'
PITFT Building modules, stage 2.
PITFT MODPOST 2 modules
PITFT LD [M] /home/pi/Raspberry-Pi-Installer-Scripts/st7789_module/fb_st7789v.ko
PITFT LD [M] /home/pi/Raspberry-Pi-Installer-Scripts/st7789_module/st7789v_ada.ko
PITFT make: Leaving directory '/usr/src/linux-headers-5.4.51-v7l+'
PITFT Success!

Settings take effect on next boot.

REBOOT NOW? [Y/n] y
```

Interactive Installation

For an interactive install, you can just run the script without any options:

```
sudo python3 adafruit-pitft.py
```

Once you run it you will be presented with menus for configuration.

Display Selection

Start by selecting the board that best corresponds with your PiTFT. There's lots of options and we will likely be adding more in the future.

```
This script downloads and installs
PiTFT Support using userspace touch
controls and a DTB for display drawing.
one of several configuration files.
Run time of up to 5 minutes. Reboot required!

Select configuration:
[1] PiTFT 2.4", 2.8" or 3.2" resistive (240x320) (320x240)
[2] PiTFT 2.2" no touch (320x240)
[3] PiTFT 2.8" capacitive touch (320x240)
[4] PiTFT 3.5" resistive touch (480x320)
[5] PiTFT Mini 1.3" or 1.54" display (240x240) - WARNING! WILL UPGRADE YOUR KERNEL TO LATEST
[6] ST7789V 2.0" no touch (320x240) - WARNING! WILL UPGRADE YOUR KERNEL TO LATEST
[7] MiniPiTFT 1.14" display (240x135) - WARNING! WILL UPGRADE YOUR KERNEL TO LATEST
[8] Uninstall PiTFT
[9] Quit without installing
```

Rotation

Next you will be asked for the rotation you want, don't worry if you're not 100% sure which you want, you can always change this later by re-running the script

```
Select rotation:
[1] 90 degrees (landscape)
[2] 180 degrees (portrait)
[3] 270 degrees (landscape)
[4] 0 degrees (portrait)
```

It will take a few minutes to install the software and download all the things...

```
Select rotation:
[1] 90 degrees (landscape)
[2] 180 degrees (portrait)
[3] 270 degrees (landscape)
[4] 0 degrees (portrait)

1
PiTFT Checking init system...
Found systemd
/boot is mounted
PiTFT System update
Updating apt indexes.....
Reading package lists...
.....
PiTFT Installing Python libraries & Software...
Installing Pre-requisite Software...This may take a few minutes!
```

Configuring what shows where

You have a few different ways to set up the PiTFT, we ask 2 questions to figure out what you want

PiTFT as Text Console (best for Raspberry Pi OS 'Lite')

This is the simplest to set-up type of use. Its great if you have a simple text based or pygame/SDL based interface. If you want the PiTFT to act as a text console you can expect:

- HDMI will be 'deactivated' - nothing appears on the HDMI output but a black screen
- The login prompt appears on the Pi
- The Pi is all text, not a GUI (no PIXEL desktop)
- Keyboard and mouse are used only by the PiTFT interface
- Framebuffer-capable software (such as fbi for displaying images, mplayer for videos, or pygame software, etc) appear on the PiTFT
- OpenGL accelerated software will not appear on the PiTFT (it is unaccelerated framebuffer only)
- But, non-OpenGL-accelerated graphics software is a bit faster than using HDMI mirroring (not tons faster but you're not running fbcp which will always make it faster)

If you want that, say Yes to the question **Would you like the console to appear on the PiTFT display**

```
PiTFT python-pip is already the newest version (18.1-5+rpt1).
PiTFT python-spidev is already the newest version (20190221-182651-1).
PiTFT 0 upgraded, 0 newly installed, 0 to remove and 0 not upgraded.
PiTFT Looking in indexes: https://pypi.org/simple, https://www.piwheels.org/simple
PiTFT Requirement already satisfied: evdev in /usr/local/lib/python3.7/dist-packages (1.3.0)
PiTFT Updating /boot/config.txt...
Already have an adafruit-pitft-helper section in /boot/config.txt.
Removing old section...
PiTFT Updating SysFS rules for Touchscreen...
PiTFT Updating TSLib default calibration...
Would you like the console to appear on the PiTFT display? [y/n]
```

Then simply reboot. Once rebooted you will not see anything on HDMI, but the console will appear on the PiTFT. That's it!

PiTFT as HDMI Mirror (Best for Raspberry Pi OS with Desktop)

This option is the easiest to understand: whatever appears on the HDMI display will be 'mirrored' to the PiTFT. Note that HDMI is much higher resolution so it's not like it turns the PiTFT into a 1080p display. This is great for when you want to run OpenGL-optimized software, PIXEL desktop software, or really anything. The down-side is it's a little slower than drawing directly to the framebuffer. You may not notice it but it's worth us mentioning!

- HDMI will be 'activated' but at a lower resolution - you can change this later but it looks best at 320x240 (PiTFT 2.2", 2.4", 2.8" and 3.2") or 480x320 (PiTFT 3.5")
- The login prompt or GUI appears on both HDMI and PiTFT at the same time
- Keyboard and mouse are shared, since the display is mirrored
- All graphics appear on both HDMI and PiTFT, thanks to fbcp

If you want that, say Yes to the question **Would you like the HDMI display to mirror to the PiTFT display?**

```
PiTFT Making sure console doesn't use PiTFT
Removing console fbcon map from /boot/cmdline.txt
Screen blanking time reset to 10 minutes
Would you like the HDMI display to mirror to the PiTFT display? [y/n]
```

PiTFT as Raw Framebuffer Device

For advanced users who are comfortable using framebuffer devices, it is possible to have the PiTFT and HDMI graphics be both active and display different data.

- HDMI will be active and act like a normal Pi
- The login prompt or GUI (PIXEL) appears on the HDMI
- PiTFT appears black, nothing appears on it
- Keyboard and mouse are used by the HDMI interface but can, in theory, be captured and used to change graphics on PiTFT through programming
- Framebuffer-capable software (such as fbi for displaying images, mplayer for videos, or pygame software, etc) can appear on the PiTFT if you set it up to display to /dev/fb1
- OpenGL accelerated software will never appear on the PiTFT (it is unaccelerated framebuffer only)

If you want that, say No to both of the configuration questions!

You can always change your mind after setting up one of the configurations, depending on your needs! Just re-run the script

Creating Your Own Automated Command

Under the Easy Single Command Install Options section, there are a bunch of different installation flags that you can choose between. If you want to create your own command, you can find the latest options by typing:

```
sudo python3 adafruit-pitft.py --help
```

```
pi@raspberrypi:~/Raspberry-Pi-Installer-Scripts $ sudo python3 adafruit-pitft.py
--help
Usage: adafruit-pitft.py [OPTIONS]

Options:
  -V, --version          Print version information
  -u, --user TEXT         Specify path of primary user's home
                          directory [default: /home/pi]
  --display TEXT          Specify a display option (1-7) or type
                          ['28r', '22', '28c', '35r',
                          'st7789_240x240', 'st7789_240x320',
                          'st7789_240x135']
  --rotation INTEGER      Specify a rotation option (1-4) or degrees
                          (0, 90, 180, 270)
  --install-type [fbcp|console|uninstall]
                          Installation Type
  --reboot [yes|no]       Specify whether to reboot after the script
                          is finished
  --help                  Show this message and exit.
```

The main options to pay attention to are the `--display`, `--rotation`, and `--install-type` arguments.

For the display, you can either choose the number you type for the options or the display type, which has the options listed under help. For instance, to use the 2.8" Resisitive display you could use

```
--display=1 or --display=28r
```

For the rotation, you can either choose the number you type for the options or the angle, which has the options also listed under help. To use 90 degrees, you could use

```
--rotation=1 or --rotation=90
```

For install type, You can either choose fbcp, console or uninstall. To use FBCP, you would simply supply

```
--install-type=fbcp
```

Automated Reboot Option

To go with a fully automated installation, you can provide a `--reboot` flag. To always reboot, use:

```
--reboot=yes
```

This is useful if you want to use the display right after running the script. To never reboot immediately, use

```
--reboot=no
```

This is useful if you want it as part of a larger script that installs many things.

Custom User Directory

By default, it is installed under the current user directory, but you can provide the `-u` or `--user` flag along with the folder that you want to install to.

Uninstalling The Driver

To uninstall, you would either run the script interactively and choose Uninstall or you can provide the uninstall flag:

```
--install-type=uninstall
```

Unsupported Full Images

Historically, we provided full 'images' of Raspbian, which is now called Raspberry Pi OS. This worked OK until Raspbian started doing releases every few months. These are no longer supported, and won't even boot on Pi 3B+, so we recommend the script above.

There's the larger 'classic Jessie' image that will boot into X by default, and requires a 8G image, it has a lot more software installed. There's also the smaller 'Jessie Lite' that will boot into the command line, and can be burned onto a 2G card! Click below to download and install into a new SD card. [Unzip and follow the classic SD card burning tutorials \(https://adafru.it/aMW\)](https://adafru.it/aMW)

PiTFT 2.2" Images

- [Raspbian Jessie 2016/10/23-based image \(https://adafru.it/sbg\)](https://adafru.it/sbg)
- [Raspbian Jessie Lite 2016/10/23-based image \(https://adafru.it/sbh\)](https://adafru.it/sbh)
- [Raspbian Jessie 2016/03/25-based image \(https://adafru.it/mAe\)](https://adafru.it/mAe)
- [Raspbian Jessie Lite 2016/03/25-based image \(https://adafru.it/mAf\)](https://adafru.it/mAf)
- [Raspbian Jessie 2015/09/24-based image \(https://adafru.it/iDC\)](https://adafru.it/iDC)
- [Raspbian Wheezy 2015/09/09-based image \(https://adafru.it/idt\)](https://adafru.it/idt)

PiTFT 2.4"/2.8"/3.2" Resistive Images

- [Raspbian Jessie 2016/9/23-based image \(https://adafru.it/s7f\)](https://adafru.it/s7f)
- [Raspbian Jessie Lite 2016/9/23-based image \(https://adafru.it/s7A\)](https://adafru.it/s7A)
- [Raspbian Jessie 2016/03/25-based image \(https://adafru.it/mA9\)](https://adafru.it/mA9)
- [Raspbian Jessie Lite 2016/03/25-based image \(https://adafru.it/mAa\)](https://adafru.it/mAa)
- [Raspbian Jessie 2015/09/24-based image \(https://adafru.it/iDA\)](https://adafru.it/iDA)
- [Raspbian Wheezy 2015/09/09-based image \(https://adafru.it/idJ\)](https://adafru.it/idJ)
- [Raspbian 2014/06/20-based image \(https://adafru.it/dSM\)](https://adafru.it/dSM)
- [Raspbian 2014/09/09-based image \(https://adafru.it/e12\)](https://adafru.it/e12)

PiTFT 2.8" Capacitive

- [Raspbian Jessie 2016-09-23-based image \(https://adafru.it/saM\)](https://adafru.it/saM)
- [Raspbian Jessie Lite 2016-09-23-based image \(https://adafru.it/saN\)](https://adafru.it/saN)
- [Raspbian Jessie 2016-03-25-based image \(https://adafru.it/mAc\)](https://adafru.it/mAc)
- [Raspbian Jessie Lite 2016-03-25-based image \(https://adafru.it/mAd\)](https://adafru.it/mAd)
- [Raspbian Jessie 2015/09/24-based image \(https://adafru.it/iDy\)](https://adafru.it/iDy)
- [Raspbian Wheezy 2015/09/24-based image \(https://adafru.it/idz\)](https://adafru.it/idz)
- [Raspbian 2014/09/18-based image \(https://adafru.it/e11\)](https://adafru.it/e11)
- [Raspbian 2014/06/20-based image \(https://adafru.it/dSO\)](https://adafru.it/dSO)
- [Raspbian image from 2015/03/03 \(https://adafru.it/eUI\)](https://adafru.it/eUI)

PiTFT 3.5" Images

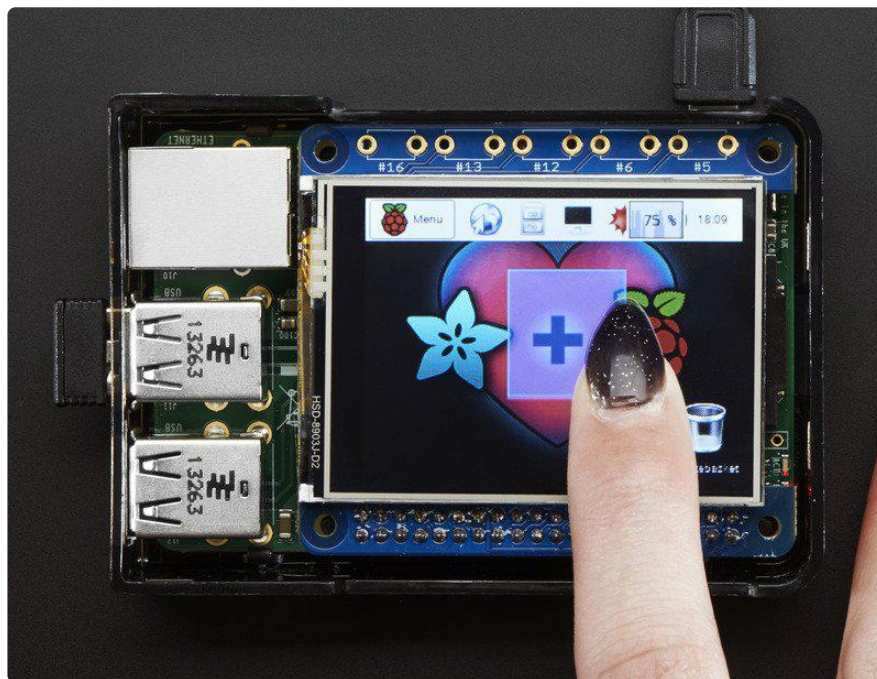
- [Raspbian Jessie 2016/9/23-based image \(https://adafru.it/siF\)](https://adafru.it/siF)
- [Raspbian Jessie Lite 2016/9/23-based image \(https://adafru.it/sja\)](https://adafru.it/sja)
- [Raspbian Jessie 2016/03/25-based image \(https://adafru.it/mAb\)](https://adafru.it/mAb)
- [Raspbian Jessie 2016/03/25-based image \(https://adafru.it/mAG\)](https://adafru.it/mAG)
- [Raspbian Jessie 2015/09/24-based image \(https://adafru.it/iDD\)](https://adafru.it/iDD)
- [Raspbian Wheezy 2015/09/24-based image \(https://adafru.it/idy\)](https://adafru.it/idy)

- [Raspbian 2014/09/09-based image \(https://adafru.it/e10\)](https://adafru.it/e10)
- [Raspbian 2015/03/12 image \(https://adafru.it/eUE\)](https://adafru.it/eUE)

Resistive Touchscreen Manual Install & Calibrate

If you've grabbed our Easy Install image, or used the installer script, this step is not required, it's already done! This is just for advanced users who are curious on how to configure and customize the touchscreen

This procedure is identical for the 2.4", 2.8", 3.2" and 3.5" Resistive PiTFTs. Not for use with the Capacitive PiTFT!



Setting up the Touchscreen

Now that the screen is working nicely, we'll take care of the touchscreen. There's just a bit of calibration to do, but it isn't hard at all.

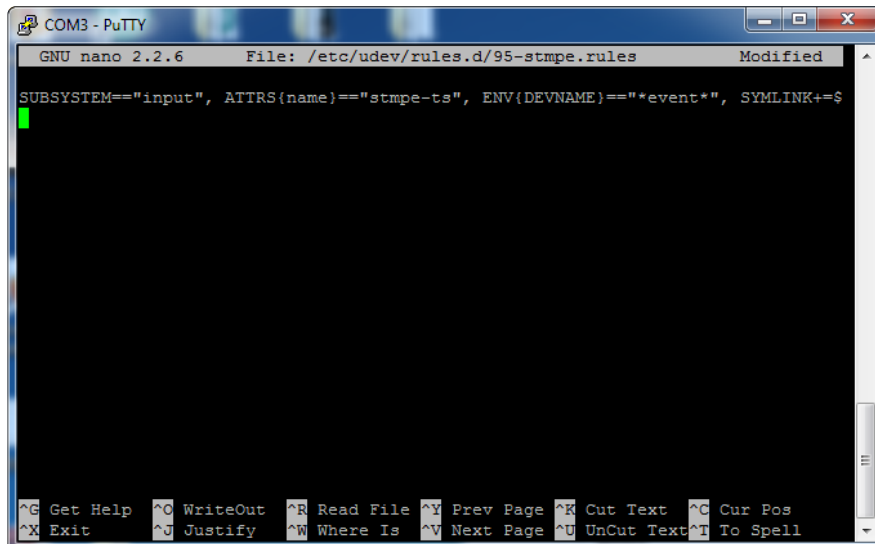
Before we start, we'll make a udev rule for the touchscreen. That's because the event X name of the device will change a lot and its annoying to figure out what its called depending on whether you have a keyboard or other mouse installed.

Run

```
sudo nano /etc/udev/rules.d/95-stmpe.rules
```

to create a new udev file and copy & paste the following line in:

```
SUBSYSTEM=="input", ATTRS{name}=="stmpe-ts", ENV{DEVNAME}=="*event*",  
SYMLINK+="input/touchscreen"
```

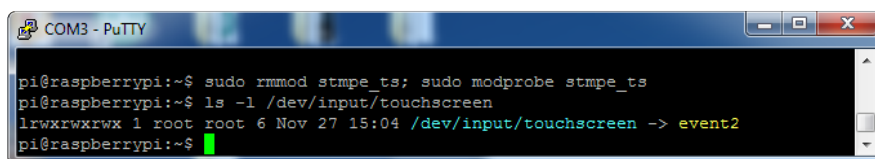


Remove and re-install the touchscreen with

```
sudo rmmod stmpe_ts; sudo modprobe stmpe_ts
```

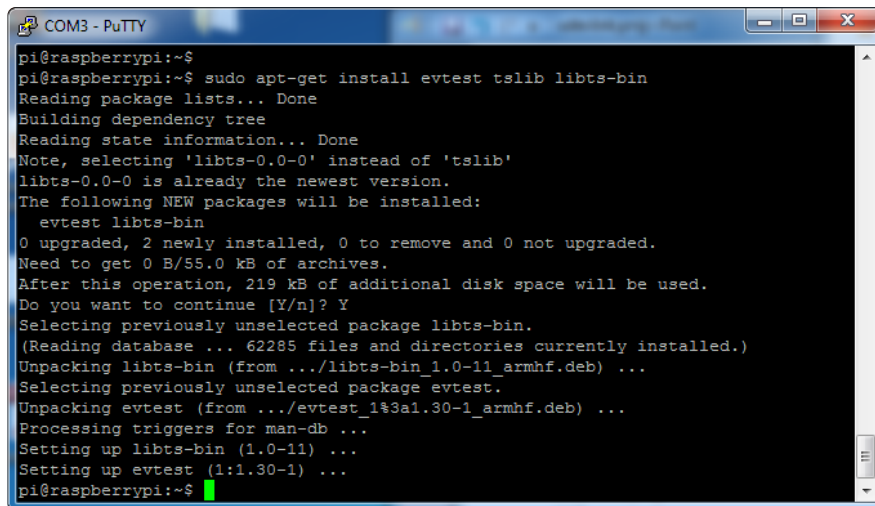
Then type `ls -l /dev/input/touchscreen`

It should point to eventX where X is some number, that number will be different on different setups since other keyboards/mice/USB devices will take up an event slot



There are some tools we can use to calibrate & debug the touchscreen. Install the "event test" and "touchscreen library" packages with

```
sudo apt-get install evtest tslib libts-bin
```



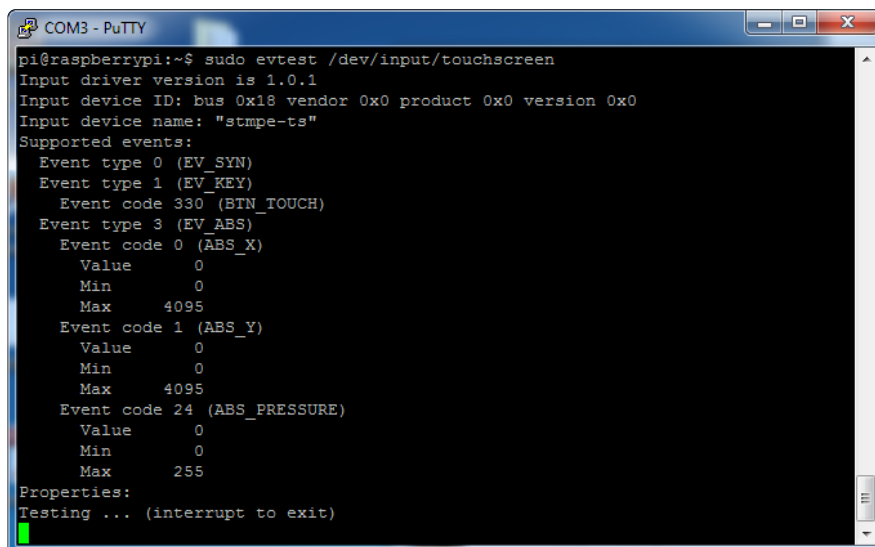
```
pi@raspberrypi:~$
pi@raspberrypi:~$ sudo apt-get install evtest tslib libts-bin
Reading package lists... Done
Building dependency tree
Reading state information... Done
Note, selecting 'libts-0.0-0' instead of 'tslib'
libts-0.0-0 is already the newest version.
The following NEW packages will be installed:
  evtest libts-bin
0 upgraded, 2 newly installed, 0 to remove and 0 not upgraded.
Need to get 0 B/55.0 kB of archives.
After this operation, 219 kB of additional disk space will be used.
Do you want to continue [Y/n]? Y
Selecting previously unselected package libts-bin.
(Reading database ... 62285 files and directories currently installed.)
Unpacking libts-bin (from .../libts-bin_1.0-11_armhf.deb) ...
Selecting previously unselected package evtest.
Unpacking evtest (from .../evtest_1.30-1_armhf.deb) ...
Processing triggers for man-db ...
Setting up libts-bin (1.0-11) ...
Setting up evtest (1:1.30-1) ...
pi@raspberrypi:~$
```

Running evtest

Now you can use some tools such as

```
sudo evtest /dev/input/touchscreen
```

which will let you see touchscreen events in real time, press on the touchscreen to see the reports.



```
pi@raspberrypi:~$ sudo evtest /dev/input/touchscreen
Input driver version is 1.0.1
Input device ID: bus 0x18 vendor 0x0 product 0x0 version 0x0
Input device name: "stmpe-ts"
Supported events:
  Event type 0 (EV_SYN)
  Event type 1 (EV_KEY)
    Event code 330 (BTN_TOUCH)
  Event type 3 (EV_ABS)
    Event code 0 (ABS_X)
      Value      0
      Min        0
      Max     4095
    Event code 1 (ABS_Y)
      Value      0
      Min        0
      Max     4095
    Event code 24 (ABS_PRESSURE)
      Value      0
      Min        0
      Max      255
Properties:
Testing ... (interrupt to exit)

```

```
COM3 - PuTTY
Event: time 1385565357.639692, type 3 (EV_ABS), code 24 (ABS_PRESSURE), value 149
Event: time 1385565357.639699, ----- SYN_REPORT -----
Event: time 1385565357.645965, type 3 (EV_ABS), code 0 (ABS_X), value 1580
Event: time 1385565357.645973, type 3 (EV_ABS), code 1 (ABS_Y), value 1846
Event: time 1385565357.645980, ----- SYN_REPORT -----
Event: time 1385565357.652293, type 3 (EV_ABS), code 0 (ABS_X), value 1634
Event: time 1385565357.652301, type 3 (EV_ABS), code 1 (ABS_Y), value 1864
Event: time 1385565357.652305, type 3 (EV_ABS), code 24 (ABS_PRESSURE), value 143
Event: time 1385565357.652310, ----- SYN_REPORT -----
Event: time 1385565357.658614, type 3 (EV_ABS), code 0 (ABS_X), value 1658
Event: time 1385565357.658622, type 3 (EV_ABS), code 1 (ABS_Y), value 1877
Event: time 1385565357.658626, type 3 (EV_ABS), code 24 (ABS_PRESSURE), value 139
Event: time 1385565357.658631, ----- SYN_REPORT -----
Event: time 1385565357.664919, type 3 (EV_ABS), code 0 (ABS_X), value 1748
Event: time 1385565357.664928, type 3 (EV_ABS), code 1 (ABS_Y), value 1888
Event: time 1385565357.664935, ----- SYN_REPORT -----
Event: time 1385565357.671199, type 3 (EV_ABS), code 0 (ABS_X), value 1778
Event: time 1385565357.671207, type 3 (EV_ABS), code 1 (ABS_Y), value 1895
Event: time 1385565357.671211, type 3 (EV_ABS), code 24 (ABS_PRESSURE), value 134
Event: time 1385565357.671216, ----- SYN_REPORT -----
Event: time 1385565357.698600, type 3 (EV_ABS), code 24 (ABS_PRESSURE), value 0
Event: time 1385565357.698607, type 1 (EV_KEY), code 330 (BTN_TOUCH), value 0
Event: time 1385565357.698610, ----- SYN_REPORT -----
```

AutoMagic Calibration Script

If you rotate the display you need to recalibrate the touchscreen to work with the new screen orientation. You can manually run the calibration processes in the next section, or you can re-run the installer script and select a new rotation:

```
SELECT 1-5: 2
Select rotation:
1. 90 degrees (landscape)
2. 180 degrees (portrait)
3. 270 degrees (landscape)
4. 0 degrees (portrait)
SELECT 1-4: 1
```

Try using this default calibration script to easily calibrate your touchscreen display. Note that the calibration values might not be exactly right for your display, but they should be close enough for most needs. If you need the most accurate touchscreen calibration, follow the steps in the next section to manually calibrate the touchscreen.

Manual Calibration

If the "automagic" calibration technique isn't working for you, or you have some other setup where you need to carefully calibrate you can do it 'manually'

You will want to calibrate the screen once but shouldn't have to do it more than that. We'll begin by calibrating on the command line by running

```
sudo TSLIB_FBDEVICE=/dev/fb1 TSLIB_TSDEVICE=/dev/input/touchscreen
ts_calibrate
```

follow the directions on the screen, touching each point. Using a stylus is suggested so you get a precise touch. Don't use something metal, plastic only!



You should see five crosshair targets. If you see less than that, the touchscreen probably generated multiple signals for a single touch, and you should try calibrating again.

```
COM3 - PuTTY
pi@raspberrypi:~$
pi@raspberrypi:~$ sudo TSLIB_FBDEVICE=/dev/fb1 TSLIB_TSDEVICE=/dev/input/touchscreen ts_calibrate
xres = 320, yres = 240
Took 43 samples...
Top left : X = 989 Y = 3192
Took 56 samples...
Top right : X = 1049 Y = 674
Took 56 samples...
Bot right : X = 3191 Y = 695
Took 37 samples...
Bot left : X = 3167 Y = 3168
Took 41 samples...
Center : X = 2095 Y = 1913
330.127167 -0.000068 -0.088149
-18.096893 0.064811 0.001094
Calibration constants: 21635214 -4 -5776 -1185998 4247 71 65536
pi@raspberrypi:~$
```

Next you can run

```
sudo TSLIB_FBDEVICE=/dev/fb1 TSLIB_TSDEVICE=/dev/input/touchscreen ts_test
```

which will let you draw-test the touch screen. Go back and re-calibrate if you feel the screen isn't precise enough!



X Calibration

You can also calibrate the X input system but you have to use a different program called xtcalf (xinput_calibrator no longer works)

You can do this if the calibration on the screen isn't to your liking or any time you change the rotate=XX module settings for the screen. Since the screen and touch driver are completely separated, the touchscreen doesn't auto-rotate

Download and compile it with the following:

```
sudo apt-get install libxaw7-dev libxxf86vm-dev libxaw7-dev libxft-dev
git clone https://github.com/KurtJacobson/xtcal
cd xtcalf
make
```

You must be running PIXEL (the GUI) while calibrating.

Before you start the calibrator you will need to 'reset' the old calibration data so run

```
DISPLAY=:0.0 xinput set-prop "stmpe-ts" 'Coordinate
Transformation Matrix' 1 0 0 0 1 0 0 0 1
```

Now you'll have to run the calibrator while also running X. You can do this by opening up the terminal program and running the the xtcalf command (which is challenging to do on such a small screen) OR you can do what we do which is create an SSH/ Terminal shell and then run the calibrator from the same shell, which requires the following command:

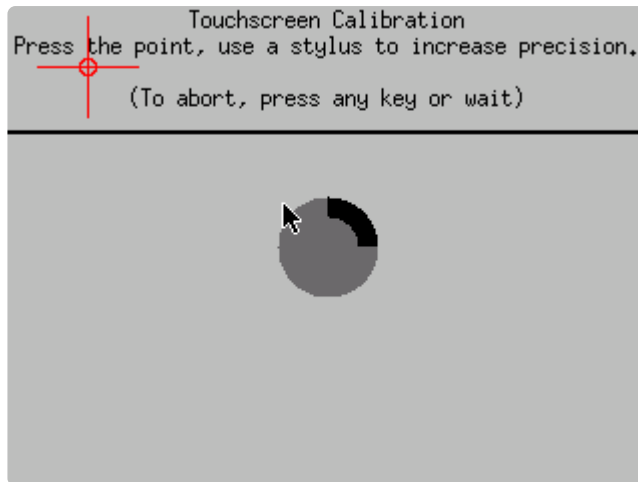
```
DISPLAY=:0.0 xtcalf/xtcalf -geometry 640x480
```

Note that the **geometry** may vary!

If you are using a 2.4"/2.8"/3.2" 320x240 display with landscape orientation, use 640x480. If you're in portrait, use 480x640.

If you are using a 3.5" display with landscape, use 720x480, portrait is 480x720

Follow the directions on screen



Once complete you'll get something like:

```
pi@raspberrypi:~$ DISPLAY=:0.0 xtcals/xtcal -geometry 480x720
fullscreen not supported
Calibrate by issuing the command below, substituting <device name> with the name found using 'xi
nput list'.
xinput set-prop <device name> 'Coordinate Transformation Matrix' -1.098888 -0.020058 1.059195 -0
.000054 -1.092957 1.031326 0 0 1
pi@raspberrypi:~$
```

Run `sudo nano /usr/share/X11/xorg.conf.d/20-calibration.conf` and copy the 9 numbers into the TransformationMatrix option so it looks like:

```
Section "InputClass"
    Identifier "STMPE Touchscreen Calibration"
    MatchProduct "stmpe"
    MatchDevicePath "/dev/input/event*"
    Driver "libinput"
    Option "TransformationMatrix" "-0.000087 1.094214 -0.028826 -1.091711
-0.004364 1.057821 0 0 1"
EndSection
```

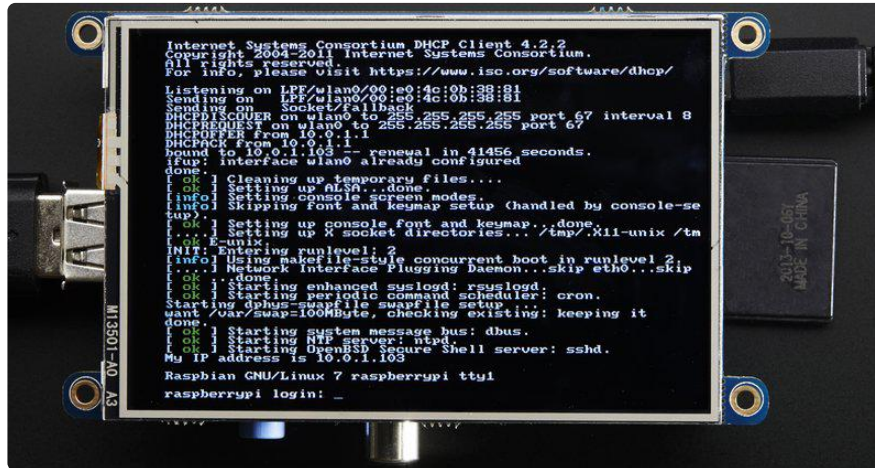
or whatever you got, into there.

You will want to reboot your Pi to verify you're done

Your touchscreen is now super calibrated, hurrah!

Console Configuration

If you've used our installer script, this step is not required, it's already done! This is just for advanced users who are curious on how to configure and customize the console



One fun thing you can do with the display is have it as your main console instead of the HDMI/TV output. Even though it is small, with a good font you can get 20 x 40 of text. For more details, check out <https://github.com/notro/fbttf/wiki/Boot-console> (<http://adafru.it/cXQ>)

First up, we'll update the boot configuration file to use the TFT framebuffer /dev/fb1 instead of the HDMI/TV framebuffer /dev/fb0

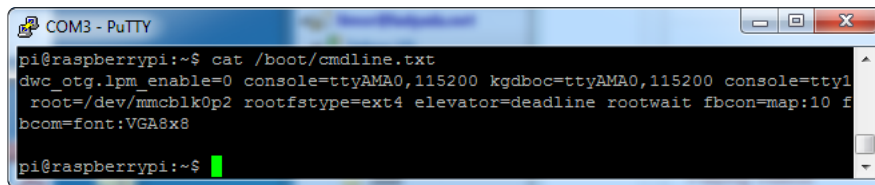
```
sudo nano /boot/cmdline.txt
```

you can also edit it by putting the SD card into a computer and opening the same file.

At the end of the line, find the text that says **rootwait** and right after that, enter in: **fbcon=map:10 fbcon=font:VGA8x8** then save the file.

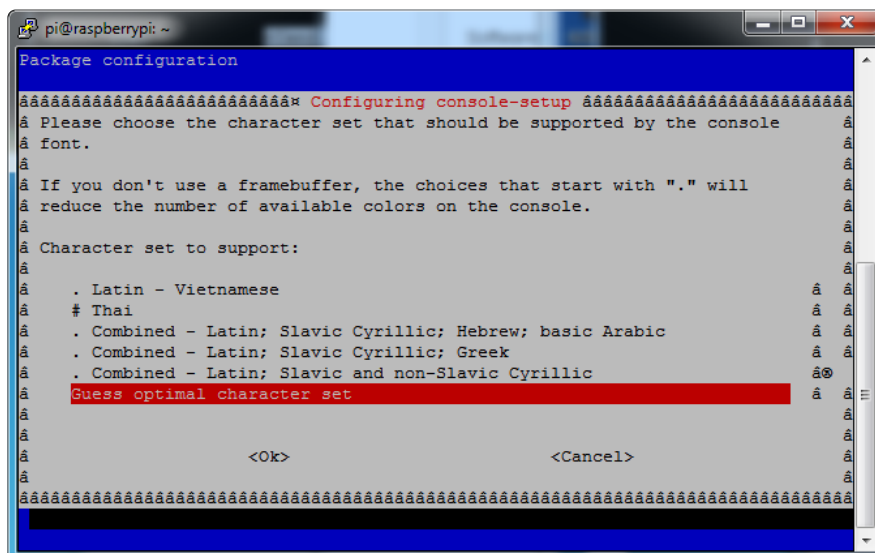
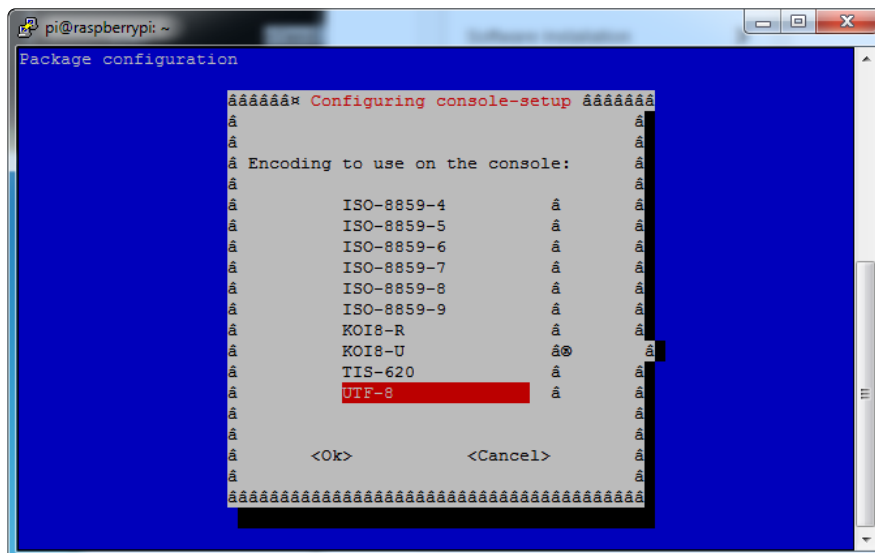
On the next boot, it will bring up the console.

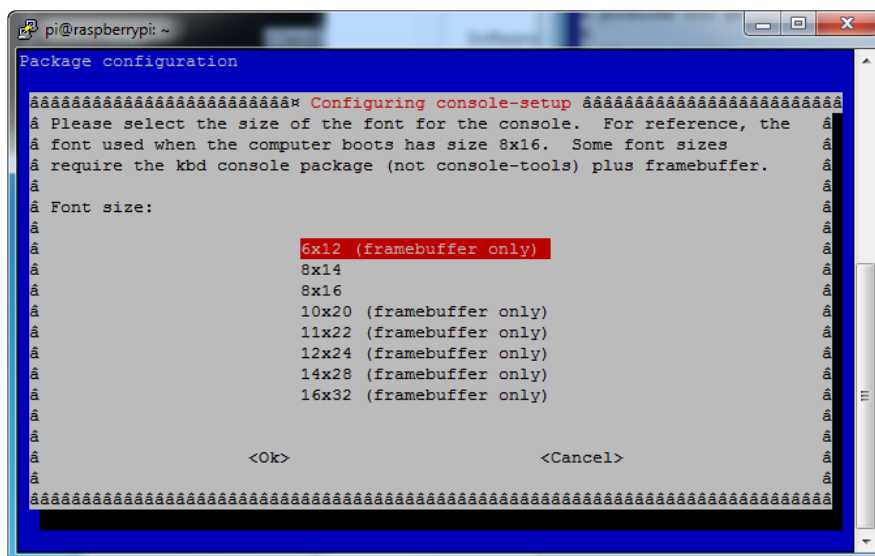
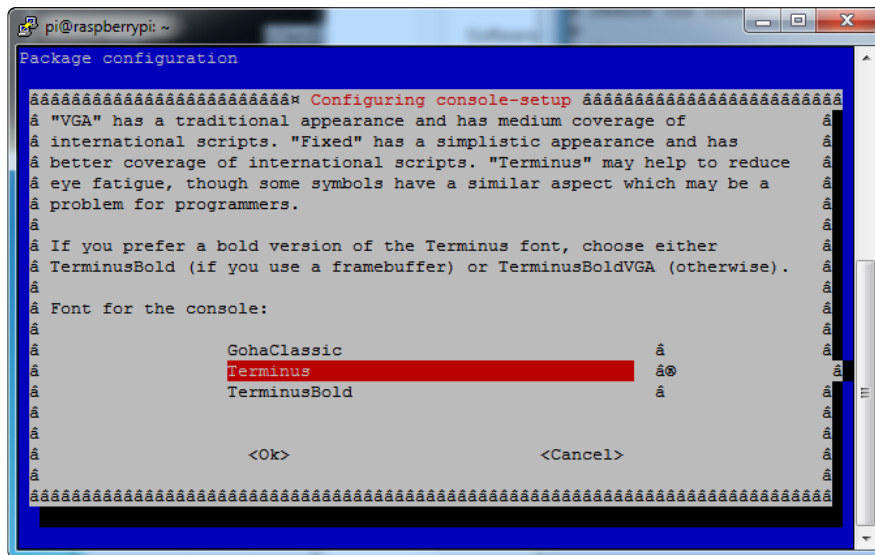
Note that the kernel has to load up the display driver module before it can display anything on it so you won't get the rainbow screen, a NooBs prompt, or a big chunk of the kernel details since the module is loaded fairly late in the boot process.



```
pi@raspberrypi:~$ cat /boot/cmdline.txt
dwc_otg.lpm_enable=0 console=ttyAMA0,115200 kgdboc=ttyAMA0,115200 console=tty1
root=/dev/mmcblk0p2 rootfstype=ext4 elevator=deadline rootwait fbcon=map:10 f
bcom=font:VGA8x8
pi@raspberrypi:~$
```

I think the VGA8x8 font is a bit chunky, you probably want 12x6 which is what is shown in the photo above. To change the font, run `sudo dpkg-reconfigure console-setup` and go thru to select Terminus 6x12





Turn off Console Blanking

You may notice the console goes black after 30 minutes, this is a sort of 'power saving' or 'screensaver' feature.

Raspbian Jessie

Add the following line to /etc/rc.local

```
sudo sh -c "TERM=linux setterm -blank 0 >/dev/tty0"
```

on the line before the final `exit 0`

Raspbian Wheezy

You can disable this by editing `/etc/kbd/config` and looking for

```
BLANK_TIME=30
```

and setting the blank time to 0 (which turns it off)

```
BLANK_TIME=0
```

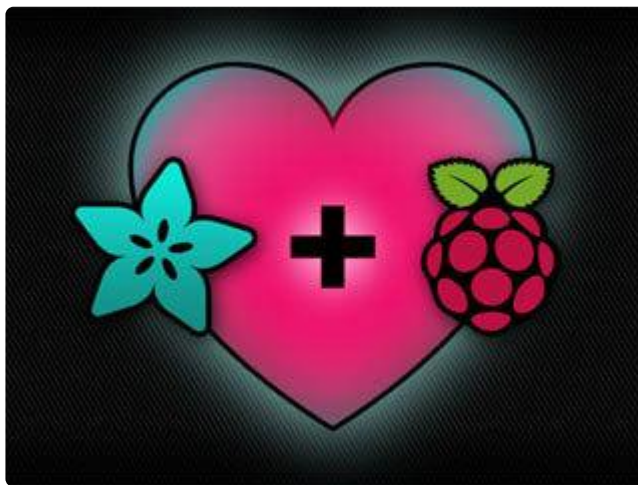


Displaying Images

You can display every day images such as GIFs, JPGs, BMPs, etc on the screen. To do this we'll install fbi which is the frame buffer image viewer (not to be confused with the FBI agency!)

`sudo apt-get install fbi` will install it

```
COM3 - PuTTY
pi@raspberrypi:~$ sudo apt-get install fbi
Reading package lists... Done
Building dependency tree
Reading state information... Done
Suggested packages:
  imagemagick
The following NEW packages will be installed:
  fbi
0 upgraded, 1 newly installed, 0 to remove and 52 not upgraded.
Need to get 59.7 kB of archives.
After this operation, 157 kB of additional disk space will be used.
Get:1 http://mirrordirector.raspbian.org/raspbian/ wheezy/main fbi armhf 2.07-10 [59.7 kB]
Fetched 59.7 kB in 1s (40.0 kB/s)
Selecting previously unselected package fbi.
(Reading database ... 64758 files and directories currently installed.)
Unpacking fbi (from ../archives/fbi_2.07-10_armhf.deb) ...
Processing triggers for mime-support ...
Processing triggers for man-db ...
Setting up fbi (2.07-10) ...
pi@raspberrypi:~$
```



Grab our lovely wallpapers with

```
wget http://adafruit-download.s3.amazonaws.com/
adapiluv320x240.jpg
wget http://adafruit-download.s3.amazonaws.com/
adapiluv480x320.png (https://adafru.it/cXU)
```

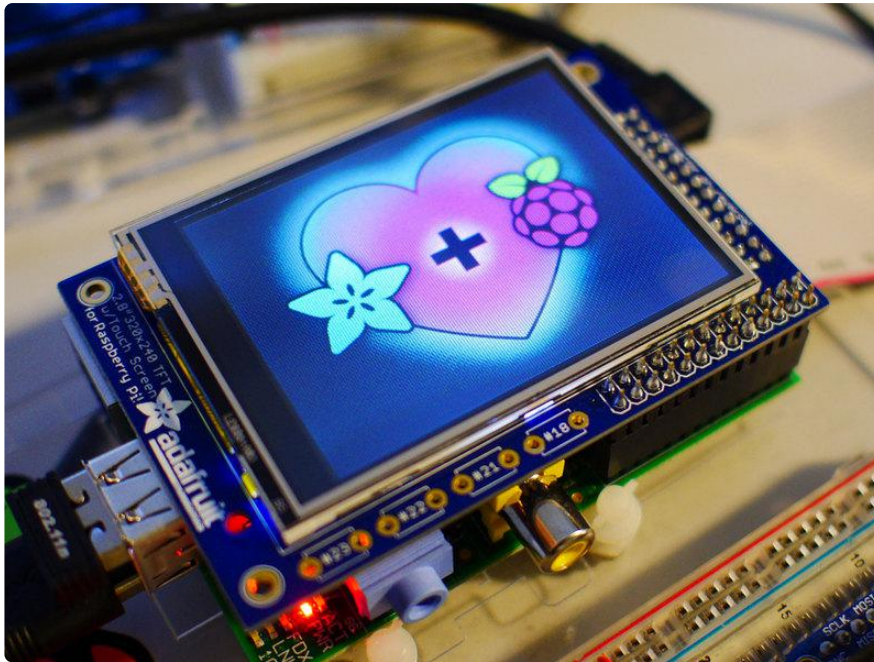
For 320x240 PiTFTs (2.2", 2.4", 2.8" or 3.2") view it with

```
sudo fbi -T 2 -d /dev/fb1 -noverbose -a adapiluv320x240.jpg
```

or for 3.5" PiTFTs:

```
sudo fbi -T 2 -d /dev/fb1 -noverbose -a adapiluv480x320 (ht
tps://adafru.it/cXU).png
```

That's it!



Playing Videos



How To Play Videos

You can play many types of videos on the screen, using mplayer you don't even need to run X and you can script the movies to play using Python. We'll show you how to just play one video for now.

To demo, we'll use an mp4 of Big Buck Bunny for 320 pixel wide screens. Below we

show you how to create/resize videos, but to make it easy, just download our version with:

```
wget http://adafruit-download.s3.amazonaws.com/  
bigbuckbunny320p.mp4 (https://adafru.it/cXR)
```

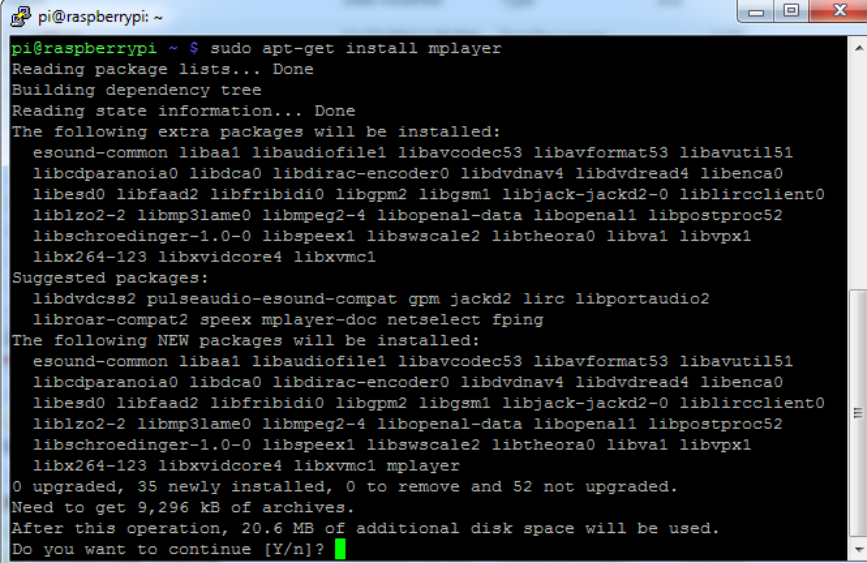
The video is 30MB which is a lot if you haven't expanded your SD card yet. Before you do this, run `sudo raspi-config` to expand the SD card so you don't run out of space!

If you don't have mplayer yet, run

```
sudo apt-get update
```

```
sudo apt-get install mplayer
```

to install it. It may take a few minutes to complete

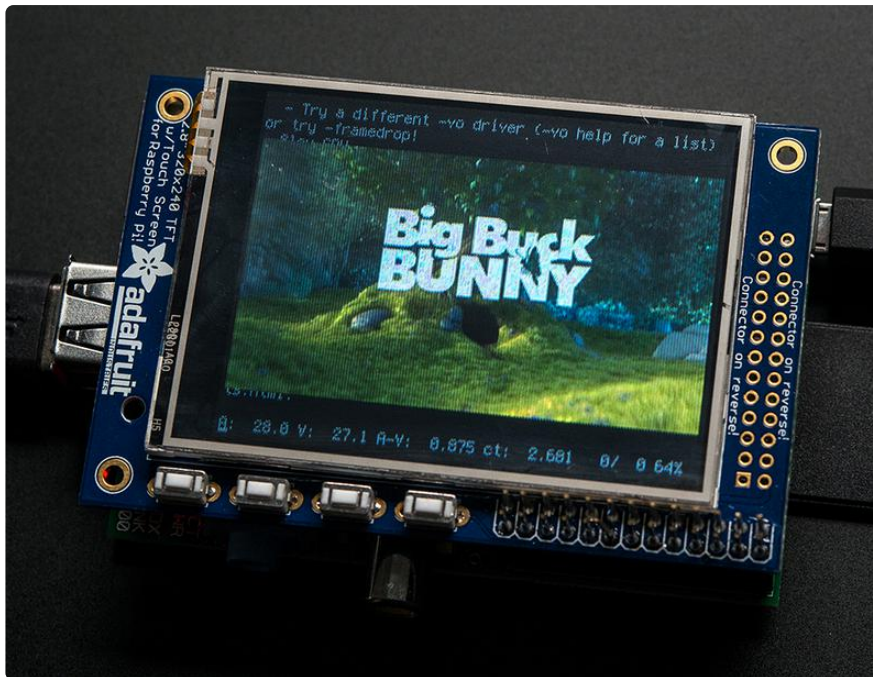


```
pi@raspberrypi: ~  
pi@raspberrypi ~$ sudo apt-get install mplayer  
Reading package lists... Done  
Building dependency tree  
Reading state information... Done  
The following extra packages will be installed:  
  esound-common libaa1 libaudiofile1 libavcodec53 libavformat53 libavutil51  
  libcdparanoia0 libdca0 libdirac-encoder0 libdvdnav4 libdvdread4 libenca0  
  libesd0 libfaad2 libfribidi0 libgpm2 libgsm1 libjack-jackd2-0 liblircclient0  
  liblzo2-2 libmp3lame0 libmpeg2-4 libopenal-data libopenal1 libpostproc52  
  libschroedinger-1.0-0 libspeex1 libswscale2 libtheora0 libva1 libvpx1  
  libx264-123 libxvidcore4 libxvnc1  
Suggested packages:  
  libdvcss2 pulseaudio-esound-compat gpm jackd2 lirc libportaudio2  
  libroar-compat2 speex mplayer-doc netsselect fping  
The following NEW packages will be installed:  
  esound-common libaa1 libaudiofile1 libavcodec53 libavformat53 libavutil51  
  libcdparanoia0 libdca0 libdirac-encoder0 libdvdnav4 libdvdread4 libenca0  
  libesd0 libfaad2 libfribidi0 libgpm2 libgsm1 libjack-jackd2-0 liblircclient0  
  liblzo2-2 libmp3lame0 libmpeg2-4 libopenal-data libopenal1 libpostproc52  
  libschroedinger-1.0-0 libspeex1 libswscale2 libtheora0 libva1 libvpx1  
  libx264-123 libxvidcore4 libxvnc1 mplayer  
0 upgraded, 35 newly installed, 0 to remove and 52 not upgraded.  
Need to get 9,296 kB of archives.  
After this operation, 20.6 MB of additional disk space will be used.  
Do you want to continue [Y/n]?
```

OK now you just have to run:

```
sudo SDL_VIDEODRIVER=fbcon SDL_FBDEV=/dev/fb1 mplayer -vo sdl -  
framedrop bigbuckbunny320p.mp4
```

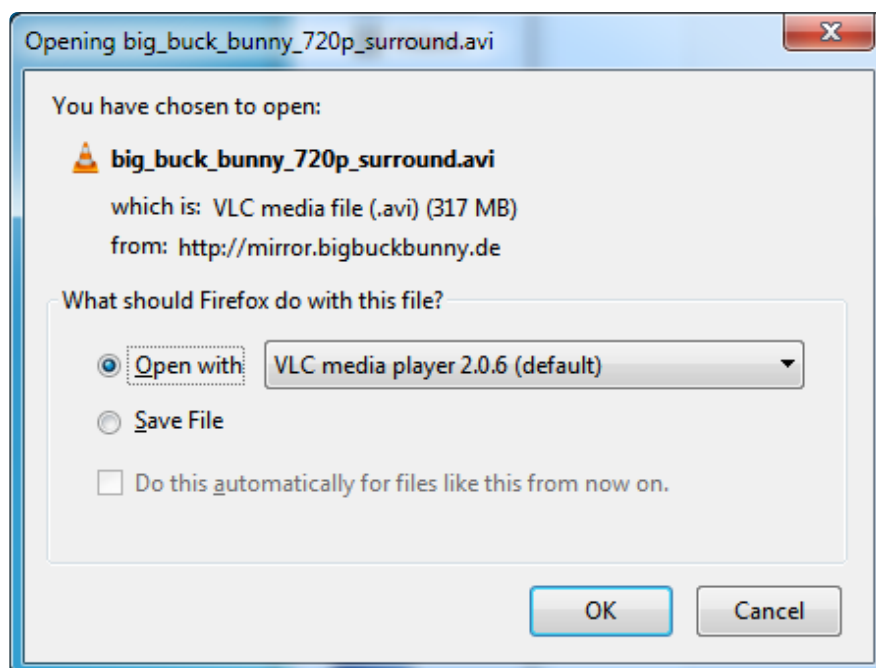
If your video is not sized for 320 wide, you may need to add a `-zoom` after `-framedrop` so that it will resize - note that this is quite taxing for the Pi, so it may result in a choppy or mis-synced video!



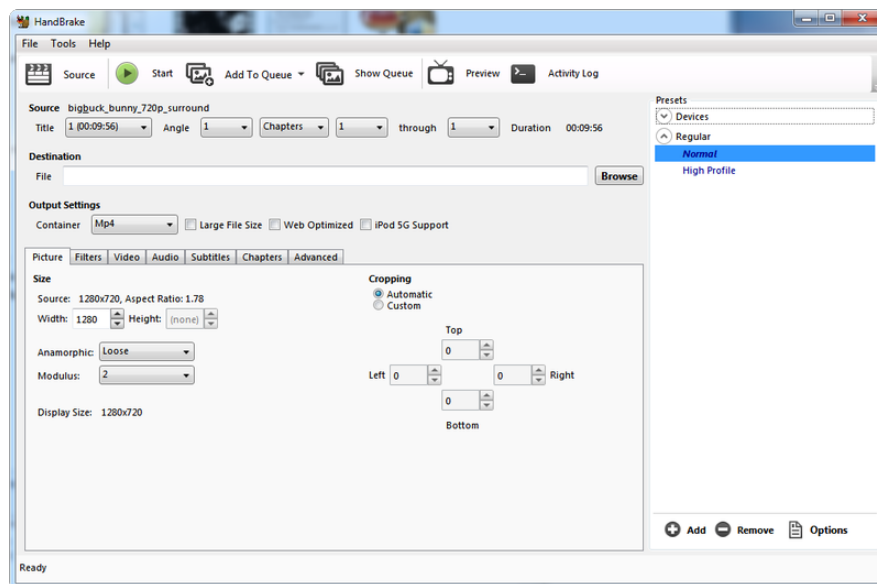
Converting/Resizing Videos

It's possible to play full length videos on the TFT plate, but since the screen is small and the Pi can't use hardware acceleration to play the videos it's best to scale them down to 320x240 pixels. This will be easier for the Pi to play and also save you tons of storage space. For this demo, we'll be using the famous [Big Buck Bunny](https://adafruit.it/cXS) (<https://adafruit.it/cXS>) video, which is creative commons and also very funny!

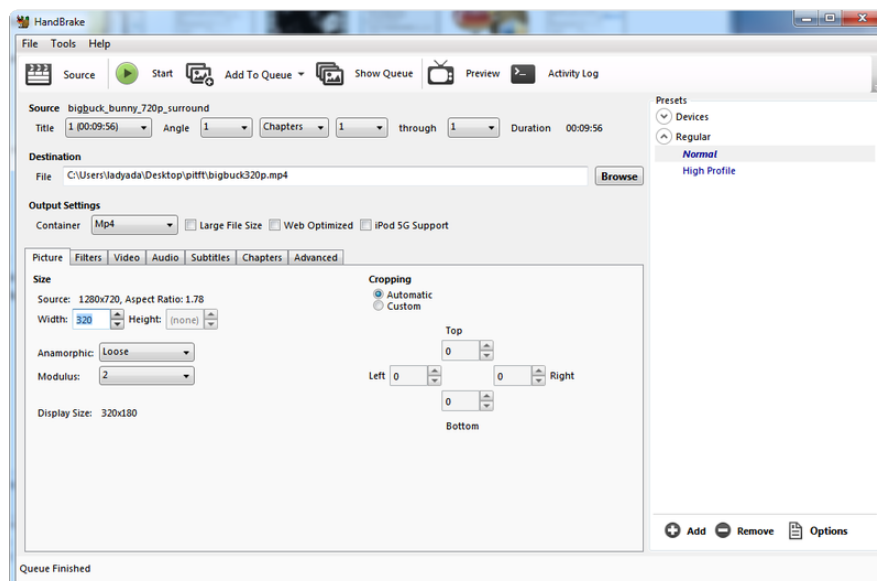
You can download it from the link above, we'll be using the 720p AVI version.



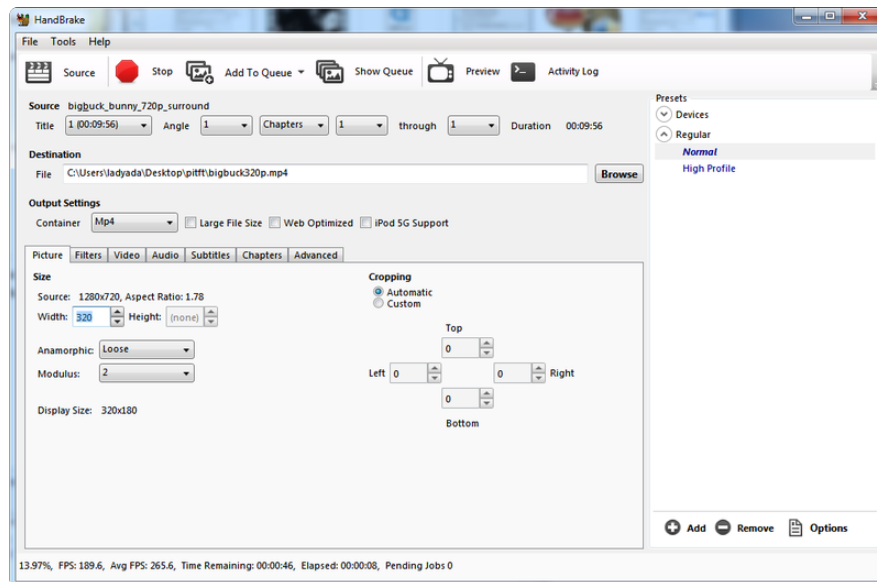
To do the conversion itself, we suggest [HandBrake](https://adafru.it/cXT) (<https://adafru.it/cXT>) which works great and is open source so it runs on all operating systems! Download and install from the link. Then run the installed application and open up the AVI file from before. The app will pre-fill a bunch of information about it.



Under Destination click Browse... to select a new MP4 file to save. Then under Picture change the Width to 320 (the height will be auto-calculated)



Click START to begin the conversion, it will take a minute or two.



That's it! You now have a smaller file. Don't forget to play it on your computer to make sure it plays right before copying it to your Pi

Using FBCP



The Ideal: Adafruit's PiTFT displays are razor sharp. Whereas small composite screens on the Raspberry Pi usually require some video scaling (resulting in blurriness), PiTFT uses the GPIO header, digitally controlled pixel-by-pixel for a rock steady image. Though not a lot of pixels, it works great for retro gaming (and the display neatly stacks above the board, no side protuberances for video cables).

The Downside: this GPIO link entirely bypasses the Pi's video hardware, including the graphics accelerator. Many games and emulators depend on the GPU for performance gains. So the PiTFT has traditionally been limited to just a subset of specially-compiled emulators that can work and run well enough without the GPU.

The Solution: our latest PiTFT drivers, along with a tool called fbcf (framebuffer copy), careful system configuration, and (optionally) the more potent Raspberry Pi 2 board open the doors to many more gaming options. Existing emulator packages (such as RetroPie, with dozens of high-performance emulators and ports) — previously off-limits to the PiTFT — can run quite effectively now!

Click here to go to our FBCP tutorial!

<https://adafru.it/fbe>

Backlight Control

The backlight of the 2.8" PiTFT has 4 LEDs in series and it draws ~75mA at all times, controlled by a transistor. The PiTFT 3.5" display has 6 LEDs in a row, and we use a boost converter to get the 5V from the Pi up to the ~20V needed to light up all the LEDs.

There might be times you'd like to save some power and turn off the backlight. The screen and touchplate will still work, you just can't see anything. We designed the board with the STMPE610 touchscreen controller which has 2 extra GPIO and tied one of them to control the backlight. You can use the command line to control the backlight.

By default, the backlight's on...but you can control it in two ways!

PWM Backlight Control with GPIO 18

If you want precise control, you can use the PWM output on GPIO 18. There's python code for controlling the PWM but you can also just use the kernel module and shell commands.

You'll need to make sure the STMPE control is not 'active' as the STMPE GPIO overrides the PWM output.

```
sudo sh -c 'echo "0" > /sys/class/backlight/soc\:backlight/brightness'
```

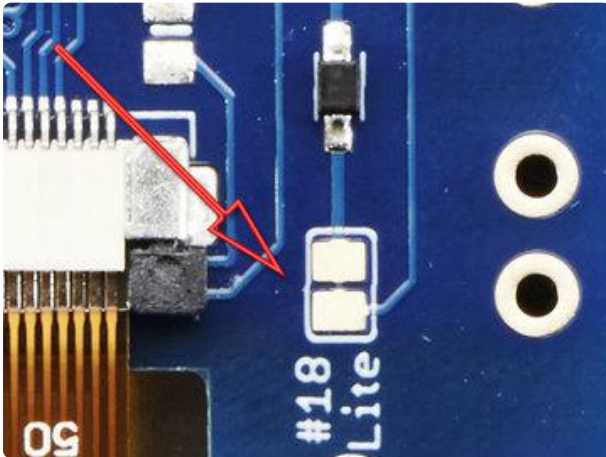
(Or if you are running an old kernel before the backlight object, try `sudo sh -c "echo 'in' > /sys/class/gpio/gpio508/direction"`)

OK now you can set the GPIO #18 pin to PWM mode using WiringPi's gpio command

With these basic shell commands, you can set the GPIO #18 pin to PWM mode with 1000 Hz frequency, set the output to 100 (out of 1023, so dim!), set the output to 1023 (out of 1023, nearly all the way on) and 0 (off)

```
gpio -g mode 18 pwm
gpio pwm 1000
gpio -g pwm 18 100
gpio -g pwm 18 1023
gpio -g pwm 18 0
```

Disabling Backlight Control



If you'd like to not have #18 control the backlight, simply cut the solder jumper, the tiny trace between the two large gold pads marked Lite #18

On / Off Using STMPE GPIO

Another option is to just turn it on and off using the extra GPIO created by the touchscreen driver

Thanks to the raspberry Pi overlay system, this GPIO is already set up for you in a file called `/sys/class/backlight/soc:backlight/brightness`

STMPE is only installed on resistive touchscreen displays. Look further down in the guide for some alternatives for the capacitive touchscreen.

To turn the backlight off run

```
sudo sh -c 'echo "0" > /sys/class/backlight/soc\:backlight/
brightness'
```

To turn it back on, run

```
sudo sh -c 'echo "1" > /sys/class/backlight/soc\:backlight/
brightness'
```

On / Off Using GPIO for the Capacitive Display

If you installed the capacitive display, you may notice that `/sys/class/backlight` isn't available. This is because the capacitive display uses a different touchscreen driver than the STMPE. You can however still control it using GPIO 18. Start by getting access to the GPIO by making a device link:

```
echo 18 >/sys/class/gpio/export
```

Check that the `gpio18` was created:

```
ls /sys/class/gpio/
```

Set the direction to out with:

```
echo out >/sys/class/gpio/gpio18/direction
```

The backlight should turn off. You can turn it on with:

```
echo 1 >/sys/class/gpio/gpio18/value
```

or back off again with

```
echo 0 >/sys/class/gpio/gpio18/value
```

For older versions of PiTFT Kernel

On older versions of the PiTFT kernel/overlay, the GPIO was not tied to the backlight device. Start by getting access to the GPIO by making a device link

```
sudo sh -c "echo 508 > /sys/class/gpio/export"
ls -l /sys/class/gpio
```

For some really old versions, the GPIO pin was #252 not #508 so substitute that if you're running something from 2014 or earlier

```
pi@raspberrypi: ~  
pi@raspberrypi ~$ sudo sh -c "echo 508 > /sys/class/gpio/export"  
pi@raspberrypi ~$ ls -l /sys/class/gpio  
total 0  
-rwxrwx--- 1 root gpio 4096 Mar 13 21:15 export  
lrwxrwxrwx 1 root gpio 0 Mar 13 21:15 gpio508 -> ../../devices/soc/3f204000.spi/spi_master/spi0/spi0.1/stmpe-gpio/gpio/gpio508  
lrwxrwxrwx 1 root gpio 0 Jan 1 1970 gpiochip0 -> ../../devices/soc/3f200000.gpio/gpiochip0  
lrwxrwxrwx 1 root gpio 0 Jan 1 1970 gpiochip506 -> ../../devices/soc/3f204000.spi/spi_master/spi0/spi0.1/stmpe-gpio/gpio/gpiochip506  
-rwxrwx--- 1 root gpio 4096 Jan 1 1970 unexport  
pi@raspberrypi ~$
```

Once you verify that you see GPIO #508, then you can set it to an output, this will turn off the display since it will output 0 by default

```
sudo sh -c "echo 'out' > /sys/class/gpio/gpio508/direction"
```

Then turn the display back on with

```
sudo sh -c "echo '1' > /sys/class/gpio/gpio508/value"
```

or back off

```
sudo sh -c "echo '0' > /sys/class/gpio/gpio508/value"
```

```
pi@raspberrypi: ~  
pi@raspberrypi ~$ sudo sh -c "echo 'out' > /sys/class/gpio/gpio508/direction"  
pi@raspberrypi ~$ sudo sh -c "echo '1' > /sys/class/gpio/gpio508/value"  
pi@raspberrypi ~$ sudo sh -c "echo '0' > /sys/class/gpio/gpio508/value"  
pi@raspberrypi ~$ sudo sh -c "echo '1' > /sys/class/gpio/gpio508/value"  
pi@raspberrypi ~$
```

Python Backlight Control with Blinky

You can also use python to control the backlight using Python. With Blinky, you can use it to turn the backlight off or on or even use PWM to control the level of the backlight. Since Python is such a flexible language, you can add some effects such as fading the backlight in or fading it out. First make sure you have Blinky installed. For the Raspberry Pi, you can follow our [CircuitPython on Linux and Raspberry Pi \(https://adafruit.it/BSN\)](https://adafruit.it/BSN) guide. To turn the backlight on, you can use this simple demo script:

```
import board  
import digitalio  
backlight = digitalio.DigitalInOut(board.D18)  
backlight.value = True
```

To turn it off, you can use this script:

```
import board  
import digitalio
```

```
backlight = digitalio.DigitalInOut(board.D18)
backlight.value = False
```

To use PWM and demonstrate the fading in and fading out effect, you can try running this script:

```
import time
import board
import pwmio

led = pwmio.PWMOut(board.D18, frequency=5000, duty_cycle=0)

while True:
    for i in range(101):
        led.duty_cycle = int(i * 65535 / 100) # Up
        time.sleep(0.01)
    time.sleep(1)
    for i in range(100, -1, -1):
        led.duty_cycle = int(i * 65535 / 100) # Down
        time.sleep(0.01)
    time.sleep(1)
```

More Tips

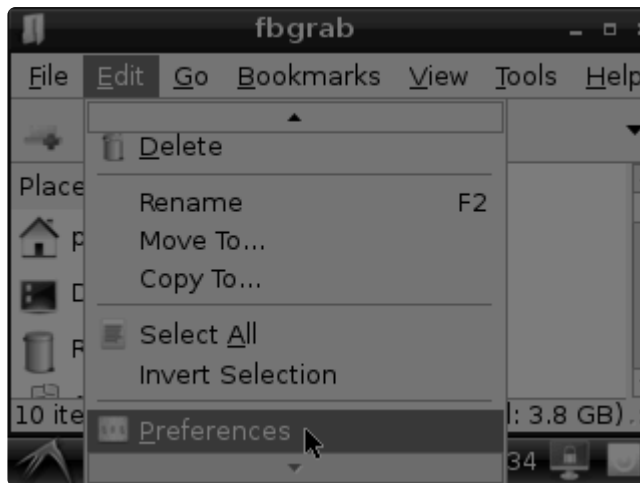
Making it easier to click icons in X

If you want to double-click on icons to launch something in X you may find it annoying to get it to work right. In LXDE you can simply set it up so that you only need to single click instead of double.

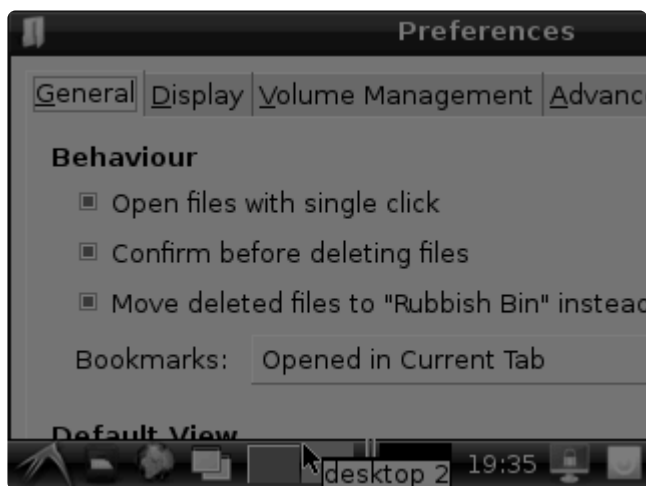
From LXDE launch the file manager (sorry these pix are grayscale and from the 2.8" TFT, still figuring out how to screenshot the framebuffer!)



Then under the Edit menu, select Preferences



Then select Open files with single click and close the window (you'll need to drag it over to get to the X button)



Right-click on a touchscreen

Obviously if you have a touchscreen, it cannot tell what finger you are pressing with. This means that all 'clicks' are left clicks. But if you want a right-click, you can do it.

Just add the following lines into your InputClass of /etc/X11/xorg.conf.d/99-calibration.conf after the calibration section

```
Option "EmulateThirdButton" "1"
Option "EmulateThirdButtonTimeout" "750"
Option "EmulateThirdButtonMoveThreshold" "30"
```

So for example your file will look like:

```

Section "InputClass"
    Identifier      "calibration"
    MatchProduct    "stmpe-ts"
    Option "Calibration"    "3800 120 200 3900"
    Option "SwapAxes"       "1"
    Option "EmulateThirdButton" "1"
    Option "EmulateThirdButtonTimeout" "750"
    Option "EmulateThirdButtonMoveThreshold" "30"
EndSection

```

This makes a right mouse click emulated when holding down the stylus for 750 ms.

(Thx adamaddin! (<https://adafru.it/fH3>))

Gesture Input

With the PiTFT touchscreen and [xstroke](https://adafru.it/dD0) (<https://adafru.it/dD0>) you can enter text in applications by drawing simple character gestures on the screen! Check out the video below for a short demonstration and overview of gesture input with xstroke:

Installation

Unfortunately xstroke hasn't been actively maintained for a few years so there isn't a binary package you can directly install. However compiling the tool is straightforward and easy with the steps below. Credit for these installation steps goes to [mwilliams03 at ozzmaker.com](https://adafru.it/dD1) (<https://adafru.it/dD1>).

First install a few dependencies by opening a command window on the Pi and executing:

```
sudo apt-get -y install build-essential libxft-dev libxpm-dev libxtst-dev
```

Now download, compile, and install xstroke by executing:

```

cd ~
wget http://mirror.egtvnet.no/avr32linux.org/twiki/pub/Main/XStroke/
xstroke-0.6.tar.gz
tar xfv xstroke-0.6.tar.gz
cd xstroke-0.6
./configure
sed -i '/^X_LIBS = / s$/ -lXrender -lX11 -lXext -ldl/' Makefile
make
sudo make install

```

If the commands above execute successfully xstroke should be installed. If you see an error message, carefully check the dependencies above were installed and try again.

Once xstroke is installed you will want to add a couple menu shortcuts to start and stop xstroke. Execute the following commands to install these shortcuts:

```
wget https://github.com/adafruit/PiTFT_Extras/raw/master/xstroke.desktop
wget https://github.com/adafruit/PiTFT_Extras/raw/master/xstrokekill.desktop
sudo cp xstroke*.desktop /usr/share/applications/
```

Usage

To use xstroke I highly recommend using a plastic stylus instead of your finger. Also [calibrate the touchscreen for X-Windows \(https://adafru.it/dD2\)](https://adafru.it/dD2) so you have the best control over the cursor possible.

Don't use a ballpoint pen or sharp metal stylus as it could scratch or damage the touchscreen!

Start X-Windows on the PiTFT and open the LXDE menu by clicking the icon in the lower left corner. Scroll up to the Accessories menu at the top and notice the new XStroke and XStroke Kill commands.

Click the XStroke menu option to start xstroke. You should see a small pencil icon appear on the bottom right side of the screen. The pencil icon means xstroke is running, however by default it's not yet looking for gesture input.

Open an application that takes text input, such as LXTerminal. To enable gesture input click the xstroke pencil icon. You should see the pencil turn green and the text 'abc' written over top of the icon. You might need to click the icon a few times to get the click to register in the right spot.

When xstroke is looking for gesture input you can drag the mouse cursor in a gesture anywhere on the screen to send specific key strokes. Here's a picture of the possible gestures you can send:



A few very useful gestures are backspace (which deletes a character), return/enter, and space. To draw a backspace gesture just draw a line going from the right side of the screen to the left side. The gesture for return/enter is a diagonal line from the top right to bottom left. Finally a space is a straight line from the left to the right.

If you get stuck completely and can't disable xstroke by clicking the icon, connect to the Raspberry Pi in a terminal/SSH connection and run 'killall xstroke' (without quotes) to force xstroke to quit. The normal way to stop xstroke is to navigate to the Accessories -> XStroke Kill command, but you might not be able to do that if xstroke is listening for gesture input.

Have fun using xstroke to control your Pi by writing gestures on the PiTFT screen!

PiTFT PyGame Tips

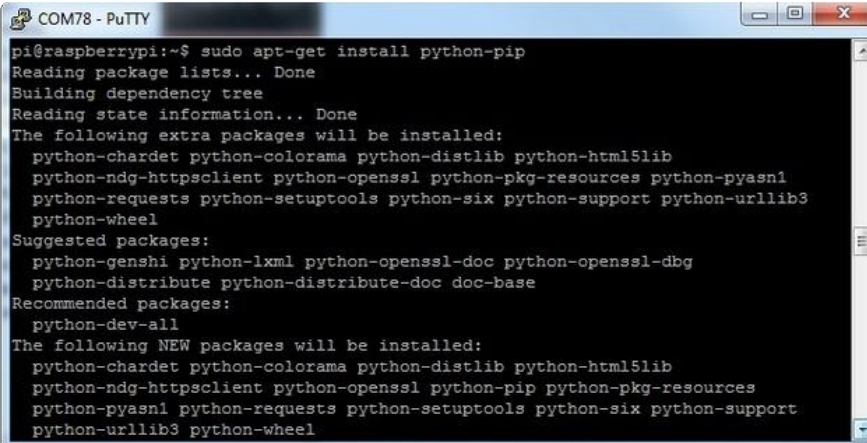
Since the PiTFT screen is fairly small, you may need to write custom UI programs. Pygame is the easiest way by far to do this.

[Jeremy Blythe has an excellent tutorial here on getting started. \(https://adafru.it/saw\)](https://adafru.it/saw)

However, before you follow that link you'll want to set up pygame for the best compatibility:

Install pip & pygame

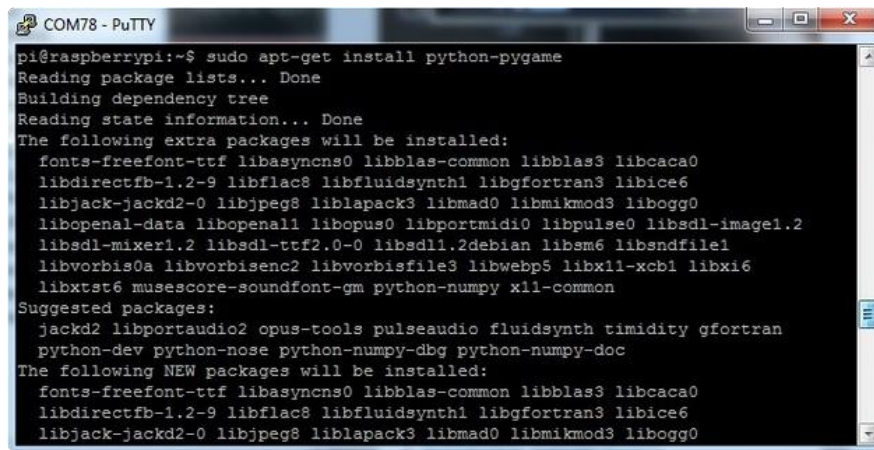
Install Pip: `sudo apt-get install python-pip`

A screenshot of a terminal window titled 'COM78 - PuTTY'. The terminal shows the command 'pi@raspberrypi:~\$ sudo apt-get install python-pip' and its output. The output indicates that several extra packages will be installed along with python-pip, including python-chardet, python-colorama, python-distlib, python-html5lib, python-ndg-httpsclient, python-openssl, python-pkg-resources, python-pyasn1, python-requests, python-setuptools, python-six, python-support, python-urllib3, and python-wheel. It also lists suggested and recommended packages. The final output shows the list of NEW packages to be installed, which includes python-pip and the previously mentioned dependencies.

```
pi@raspberrypi:~$ sudo apt-get install python-pip
Reading package lists... Done
Building dependency tree
Reading state information... Done
The following extra packages will be installed:
python-chardet python-colorama python-distlib python-html5lib
python-ndg-httpsclient python-openssl python-pkg-resources python-pyasn1
python-requests python-setuptools python-six python-support python-urllib3
python-wheel
Suggested packages:
python-genshi python-lxml python-openssl-doc python-openssl-dbg
python-distribute python-distribute-doc doc-base
Recommended packages:
python-dev-all
The following NEW packages will be installed:
python-chardet python-colorama python-distlib python-html5lib
python-ndg-httpsclient python-openssl python-pip python-pkg-resources
python-pyasn1 python-requests python-setuptools python-six python-support
python-urllib3 python-wheel
```

Install Pygame: `sudo apt-get install python-pygame`

(this will take a while)



```
pi@raspberrypi:~$ sudo apt-get install python-pygame
Reading package lists... Done
Building dependency tree
Reading state information... Done
The following extra packages will be installed:
 fonts-freefont-ttf libasyns0 libblas-common libblas3 libcaca0
 libdirectfb-1.2-9 libflac8 libfluidsynth1 libgfortran3 libice6
 libjack-jackd2-0 libjpeg8 liblapack3 libmad0 libmikmod3 libogg0
 libopenal-data libopenal1 libopus0 libportmidi0 libpulse0 libSDL-image1.2
 libSDL-mixer1.2 libSDL-ttf2.0-0 libSDL1.2debian libsm6 libsndfile1
 libvorbis0a libvorbisenc2 libvorbisfile3 libwebp5 libx11-xcb1 libxi6
 libxtst6 musescore-soundfont-gm python-numpy x11-common
Suggested packages:
 jackd2 libportaudio2 opus-tools pulseaudio fluidsynth timidity gfortran
 python-dev python-nose python-numpy-dbg python-numpy-doc
The following NEW packages will be installed:
 fonts-freefont-ttf libasyns0 libblas-common libblas3 libcaca0
 libdirectfb-1.2-9 libflac8 libfluidsynth1 libgfortran3 libice6
 libjack-jackd2-0 libjpeg8 liblapack3 libmad0 libmikmod3 libogg0
```

Ensure you are running SDL 1.2

SDL 2.x and SDL 1.2.15-10 have some serious incompatibilities with touchscreen. You can force SDL 1.2 by running a script. ([Thanks to heine in the forums! \(https://adafru.it/sax\)](https://adafru.it/sax))

Edit a new file with `sudo nano installsdl.sh`
and paste in the following text:

```
#!/bin/bash

# enable wheezy package sources
echo "deb http://legacy.raspbian.org/raspbian wheezy main" > /etc/apt/sources.list.d/wheezy.list

# set stable as default package source (currently buster)
echo "APT::Default-release \"stable\";" > /etc/apt/apt.conf.d/10defaultRelease

# set the priority for libSDL from wheezy higher then the buster package
echo "Package: libSDL1.2debian
Pin: release n=buster
Pin-Priority: -10
Package: libSDL1.2debian
Pin: release n=wheezy
Pin-Priority: 900" > /etc/apt/preferences.d/libSDL

# install
apt-get update
apt-get -y --allow-downgrades install libSDL1.2debian/wheezy
```

run

`sudo chmod +x installsdl.sh`

`sudo ./installsdl.sh`

```
COM78 - PuTTY
pi@raspberrypi:~$ sudo chmod +x installsdl.sh
pi@raspberrypi:~$ chmod +x installsdl.sh
chmod: changing permissions of 'installsdl.sh': Operation not permitted
^[[Api@raspberrypi
pi@raspberrypi:~$ sudo ./installsdl.sh
Hit http://apt.adafruit.com jessie InRelease
Hit http://mirrordirector.raspbian.org jessie InRelease
Hit http://archive.raspberrypi.org jessie InRelease
Get:1 http://archive.raspbian.org wheezy InRelease [14.9 kB]
Hit http://apt.adafruit.com jessie/main armhf Packages
Ign http://apt.adafruit.com jessie/main Translation-en_GB
Ign http://apt.adafruit.com jessie/main Translation-en
Hit http://mirrordirector.raspbian.org jessie/main armhf Packages
Hit http://mirrordirector.raspbian.org jessie/contrib armhf Packages
Hit http://archive.raspberrypi.org jessie/main armhf Packages
Hit http://mirrordirector.raspbian.org jessie/non-free armhf Packages
Hit http://archive.raspberrypi.org jessie/ui armhf Packages
Hit http://mirrordirector.raspbian.org jessie/rpi armhf Packages
Get:2 http://archive.raspbian.org wheezy/main armhf Packages [6,909 kB]
Ign http://archive.raspberrypi.org jessie/main Translation-en_GB
Ign http://archive.raspberrypi.org jessie/main Translation-en
Ign http://archive.raspberrypi.org jessie/ui Translation-en_GB
Ign http://archive.raspberrypi.org jessie/ui Translation-en
Ign http://mirrordirector.raspbian.org jessie/contrib Translation-en_GB
Ign http://mirrordirector.raspbian.org jessie/contrib Translation-en
Ign http://mirrordirector.raspbian.org jessie/main Translation-en_GB
Ign http://mirrordirector.raspbian.org jessie/main Translation-en
Ign http://mirrordirector.raspbian.org jessie/non-free Translation-en_GB
Ign http://mirrordirector.raspbian.org jessie/non-free Translation-en
Ign http://mirrordirector.raspbian.org jessie/rpi Translation-en_GB
Ign http://mirrordirector.raspbian.org jessie/rpi Translation-en
51% [Packages 0 B] [2 Packages 3,494 kB/6,909 kB 51%] 580 kB/s 5s
```

it will force install SDL 1.2

```
COM78 - PuTTY
Ign http://archive.raspbian.org wheezy/main Translation-en_GB
Ign http://archive.raspbian.org wheezy/main Translation-en
Fetched 6,924 kB in 42s (162 kB/s)
Reading package lists... Done
Reading package lists... Done
Building dependency tree
Reading state information... Done
Selected version '1.2.15-5' (Raspbian:7.0/oldstable [armhf]) for 'libsdl1.2debian'
The following packages will be DOWNGRADED:
  libsdl1.2debian
0 upgraded, 0 newly installed, 1 downgraded, 0 to remove and 21 not upgraded.
Need to get 203 kB of archives.
After this operation, 12.3 kB of additional disk space will be used.
Get:1 http://archive.raspbian.org/raspbian/ wheezy/main libsdl1.2debian armhf 1.2.15-5 [203 kB]
Fetched 203 kB in 1s (134 kB/s)
dpkg: warning: downgrading libsdl1.2debian:armhf from 1.2.15-10+rpil to 1.2.15-5
(Reading database ... 33729 files and directories currently installed.)
Preparing to unpack .../libsdl1.2debian_1.2.15-5_armhf.deb ...
Unpacking libsdl1.2debian:armhf (1.2.15-5) over (1.2.15-10+rpil) ...
Setting up libsdl1.2debian:armhf (1.2.15-5) ...
Processing triggers for libc-bin (2.19-18+deb8u1) ...
pi@raspberrypi:~$
```

OK now you can continue with pygame

Using the Capacitive touch screen in PyGame

The 2.8" Capacitive touch screen driver may not work by default in pygame, but this handy script shows how you can capture the device messages in python to create a UI

- <https://github.com/nift4/pigame> (<https://adafru.it/CYv>)

For examples:

<https://github.com/nift4/Raspberry-Pi-Testing> (<https://adafru.it/CYA>)

HELP! (FAQ)

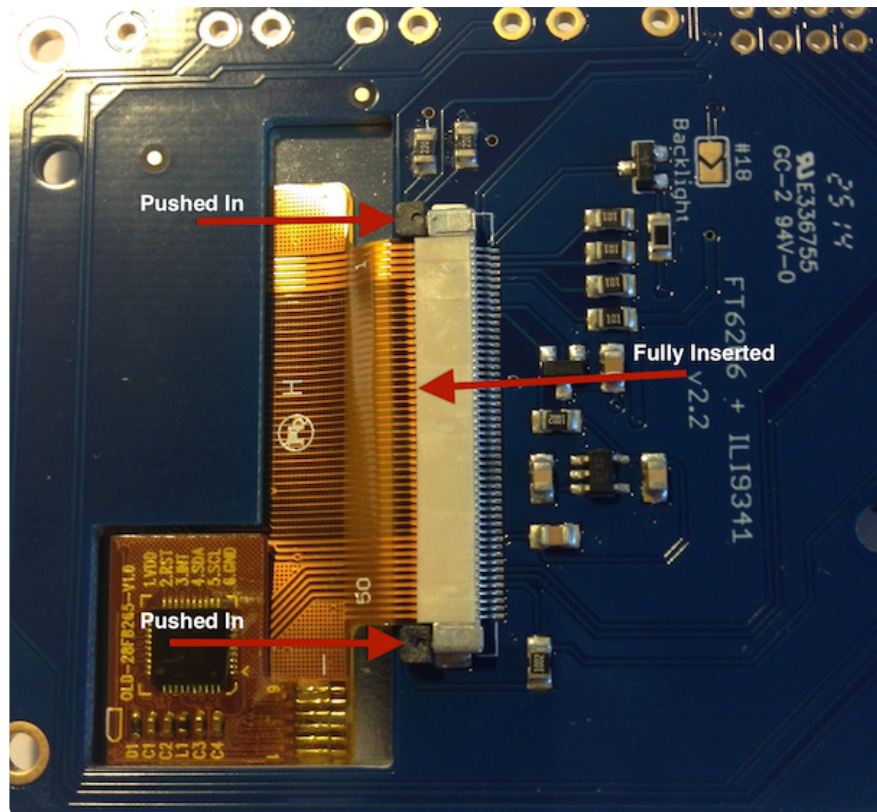
My PiTFT used to work, now it doesn't!

If you messed with `/boot/config.txt` or `/etc/rc.local` you may have removed or disabled some of the elements required for the PiTFT to work. Try re-running the Easy Installer script!

I'm booting my Pi with the PiTFT and the HDMI output 'locks up' during boot!

It looks like the Pi is 'halting' or 'locking' up during boot but what is really happening is the console is switching from the HDMI output to the PiTFT console output.

Check your PiTFT connections, particularly make sure you seated the PiTFT on the Pi properly, nothing is in the way, and the TFT flex connector is seated properly.



My PiTFT works for a bit and then I get a black screen with a short line of white pixels in one corner

Sounds like you tried to configure your Pi to 'boot straight to X', that is, start up the graphics interface on boot. This doesn't work by default because the Pi operating system is not expecting a PiTFT so it boots to the HDMI output. See below for how to set up your Pi to boot to X on the PiTFT

To 'fix' this, you can either connect an HDMI monitor, then in a terminal window run `sudo raspi-config` and configure the Pi to boot to the command line not X! If you do not have an HDMI monitor, you can also try a console cable

I'm trying to run `startx` and I get FATAL: Module `g2d_23` not found.

don't forget you have to remove the turbo file!

```
sudo mv /usr/share/X11/xorg.conf.d/99-fbturbo.conf ~
```

How come OMX-Player and Minecraft and other programs don't appear on the PiTFT display?

Some programs are graphics-optimized, particularly the video playback tools and some other programs like Minecraft. They write 'directly' to the HDMI output, and

cannot write to the PiTFT so there is no way to directly make them work. However, you can have the output go to HDMI and then mirror the HDMI onto the PiTFT with fbcp. Using the Easy Installer, select Mirror HDMI

Why doesn't the tactile button on GPIO #21 work?

On some older PiTFTs we had one of the buttons labeled #21 - that's the original RasPi name for that pin. If you're using a V2 (chance is, you are!) that is now called #27.

All the PiTFT's we ship now have the button labeled #21 and #27

I want better performance and faster updates!

You can change the SPI frequency (overclock the display) by editing /boot/config.txt and changing the dtoverlay options line to:

```
dtoverlay=pitft28r,rotate=90,speed=62000000,fps=25
```

Or whatever you like for speed, rotation, and frames-per-second. BUT, here's the thing, the Pi only supports a fixed number of SPI frequencies. So tweaking the number a little won't do anything. The kernel will round the number to the closest value. You will always get frequencies that are 250MHz divided by an even number. Here's the only SPI frequencies this kernel supports

- 15,625,000 (a.k.a 16000000 = 16 MHz)
- 17,857,142 (a.k.a. 18000000 = 18 MHz)
- 20,833,333 (a.k.a 21000000 = 21 MHz)
- 25,000,000 (= 25 MHz)
- 31,250,000 (a.k.a 32000000 = 32MHz)
- 41,666,666 (a.k.a 42000000 = 42MHz)
- 62,500,000 (a.k.a 62000000 = 62MHz)

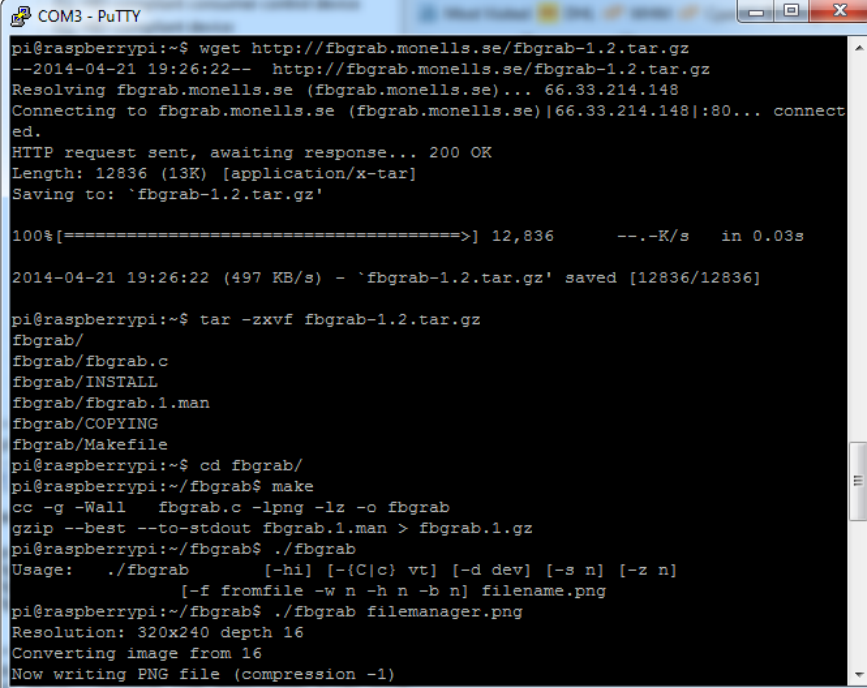
So if you put in 48000000 for the speed, you won't actually get 48MHz, you'll actually only get about 42MHz because it gets rounded down. We tested this display nicely with 32MHz and we suggest that. But you can put in 42MHz or even try 62MHz and it will update faster

You can tweak fps (frames per second) from 20 to 60 and frequency up to 62MHz for tradeoffs in performance and speed. Reboot after each edit to make sure the settings are loaded properly. There's a trade off that if you ask for higher FPS you're going to load the kernel more because it's trying to keep the display updated.

How can I take screenshots of the little screen?

We took the screenshots for this tutorial with <https://adafru.it/diV>fbgra (<https://adafru.it/diV>)b (<https://adafru.it/diV>)

```
wget http://fbgrab.monells.se/fbgrab-1.2.tar.gz (https://adafru.it/diW)
tar -zxvf fbgrab*.gz
cd fbgrab/
make
./fbgrab screenshot.png
```



```
COM3 - PuTTY
pi@raspberrypi:~$ wget http://fbgrab.monells.se/fbgrab-1.2.tar.gz
--2014-04-21 19:26:22-- http://fbgrab.monells.se/fbgrab-1.2.tar.gz
Resolving fbgrab.monells.se (fbgrab.monells.se)... 66.33.214.148
Connecting to fbgrab.monells.se (fbgrab.monells.se)|66.33.214.148|:80... connect
ed.
HTTP request sent, awaiting response... 200 OK
Length: 12836 (13K) [application/x-tar]
Saving to: `fbgrab-1.2.tar.gz'

100%[=====>] 12,836      --.-K/s   in 0.03s

2014-04-21 19:26:22 (497 KB/s) - `fbgrab-1.2.tar.gz' saved [12836/12836]

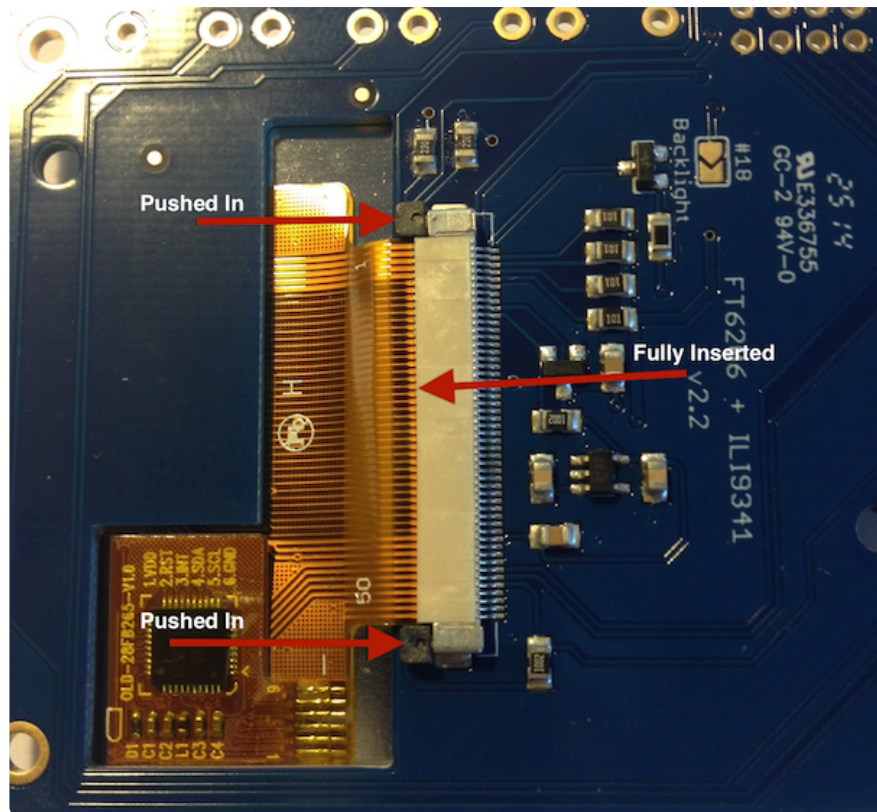
pi@raspberrypi:~$ tar -zxvf fbgrab-1.2.tar.gz
fbgrab/
fbgrab/fbgrab.c
fbgrab/INSTALL
fbgrab/fbgrab.1.man
fbgrab/COPYING
fbgrab/Makefile
pi@raspberrypi:~$ cd fbgrab/
pi@raspberrypi:~/fbgrab$ make
cc -g -Wall  fbgrab.c -lpng -lz -o fbgrab
gzip --best --to-stdout fbgrab.1.man > fbgrab.1.gz
pi@raspberrypi:~/fbgrab$ ./fbgrab
Usage:  ./fbgrab      [-hi] [-{C|c} vt] [-d dev] [-s n] [-z n]
          [-f fromfile -w n -h n -b n] filename.png
pi@raspberrypi:~/fbgrab$ ./fbgrab filemanager.png
Resolution: 320x240 depth 16
Converting image from 16
Now writing PNG file (compression -1)
```

How do I automatically boot to X windows on the PiTFT?

Make sure your Pi boots to the graphical PIXEL desktop on the HDMI output monitor, then using the Easy Installer, select Mirror HDMI

My screen isn't working/works erratically/looks funny

Check to make sure that the flat flex cable is fully seated in the connector and the 'ears' are pushed in to secure it. See the picture for what it should look like:



On my first run of startx I get a window saying "GDBus Error.org.Freedesktop Policy Kit1 Error: Failed Cannot determine user of subject"

This happens on the Raspberry Pi the first time you run startx, no matter what display. You can just re-start X and it wont appear again.

Can I get a right-click from the touch-screen?

Yes! Please see this post:

<https://forums.adafruit.com/viewtopic.php?f=47&t=77528&p=393280#p393322> (<https://adafru.it/fH3>)

I'm having difficulties with the STMPE resistive touch screen controller

Here's a hack for the device tree overlay that can force different SPI modes, sometimes that helps! (<https://adafru.it/fEw>)

My PiTFT's rotation/calibration isn't working in X11

X11 (the graphical system) has changed how it gets touchscreen input, so if you rotate the display and the calibration isn't being picked up:

Check `/usr/share/X11/xorg.conf.d` for a file called `10-evdev.conf`

If you don't see that file

1. You need to `sudo apt-get install xserver-xorg-input-evdev`, and then...
2. If you do have a `40-libinput.conf` in that same directory, you must remove it even if/once evdev is installed, since it will override the `10-evdev.conf` otherwise.

Thanks to cerebrate in the forums for the hint! (<https://adafru.it/fEw>)

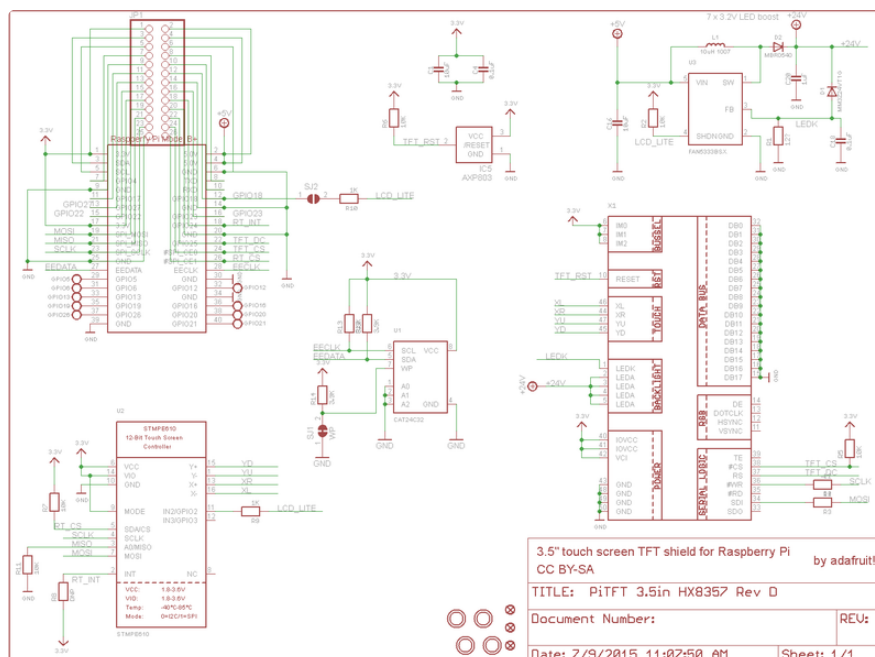
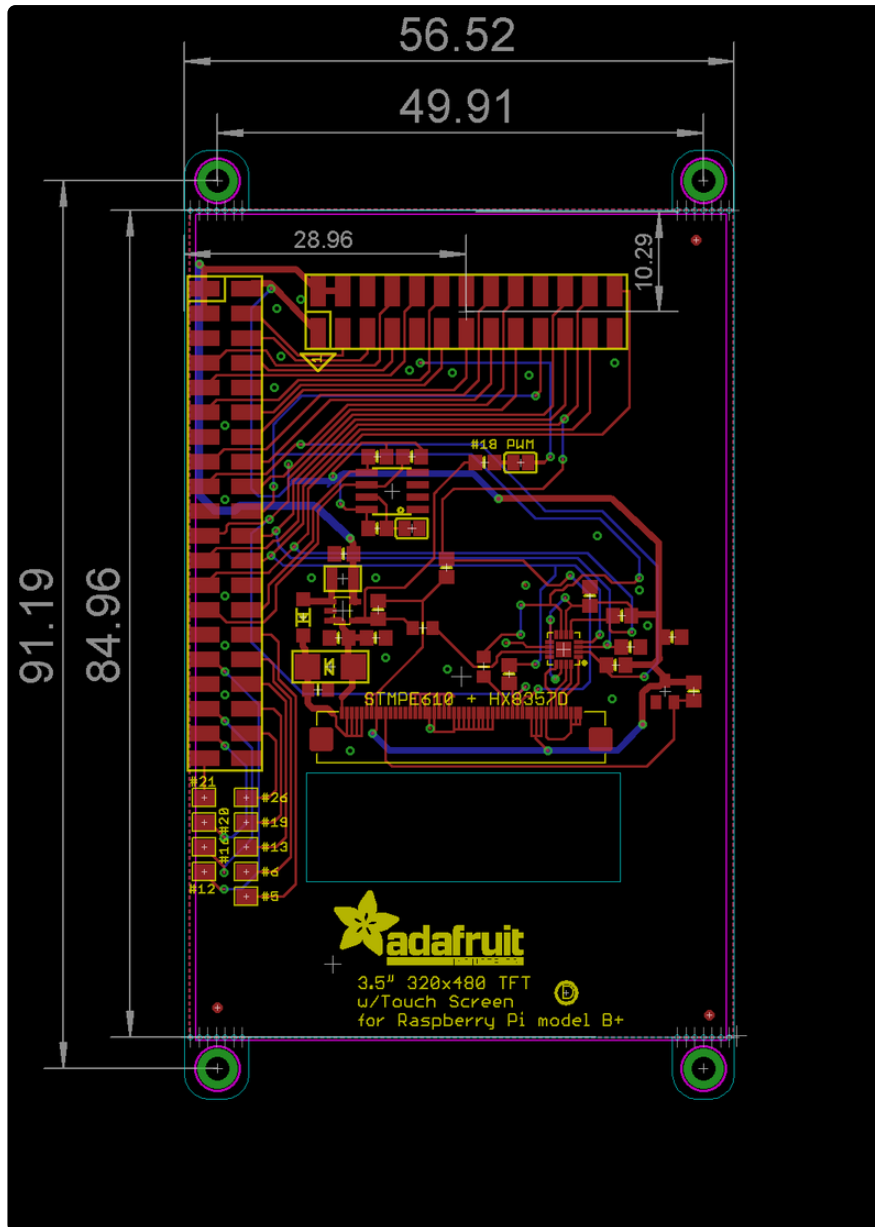
Downloads

Files

- [The latest kernel fork that adds all the TFT, touchscreen, and other addons is here on github \(https://adafru.it/aPa\)](https://adafru.it/aPa)
- [Datasheet for the controller chip \(https://adafru.it/dQQ\)](https://adafru.it/dQQ)
- [Datasheet for the 'raw' 3.5" TFT display \(https://adafru.it/dR4\)](https://adafru.it/dR4)
- [PCB files on GitHub \(https://adafru.it/rEC\)](https://adafru.it/rEC)
- [Fritzing object in the Adafruit Fritzing library \(https://adafru.it/aP3\)](https://adafru.it/aP3)

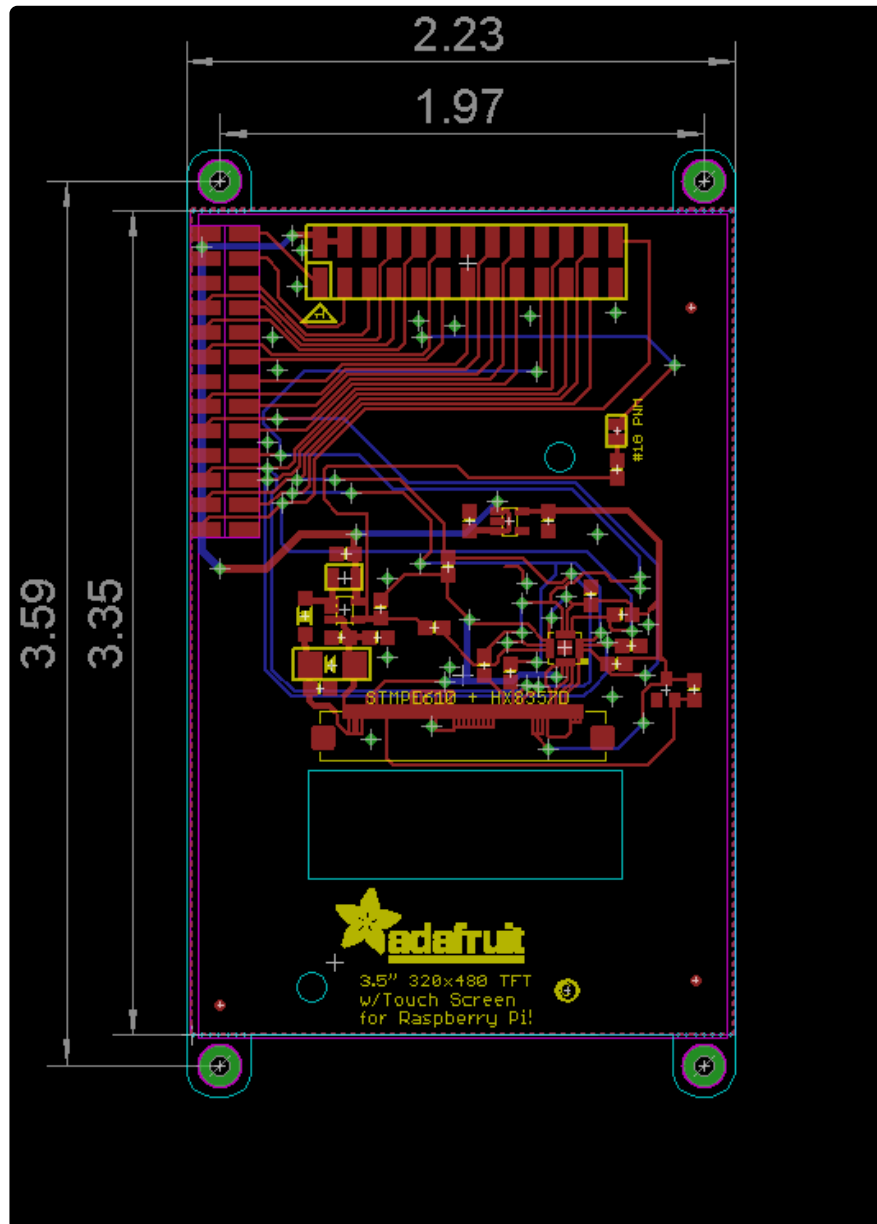
Layout and Schematic for PiTFT Plus 3.5"

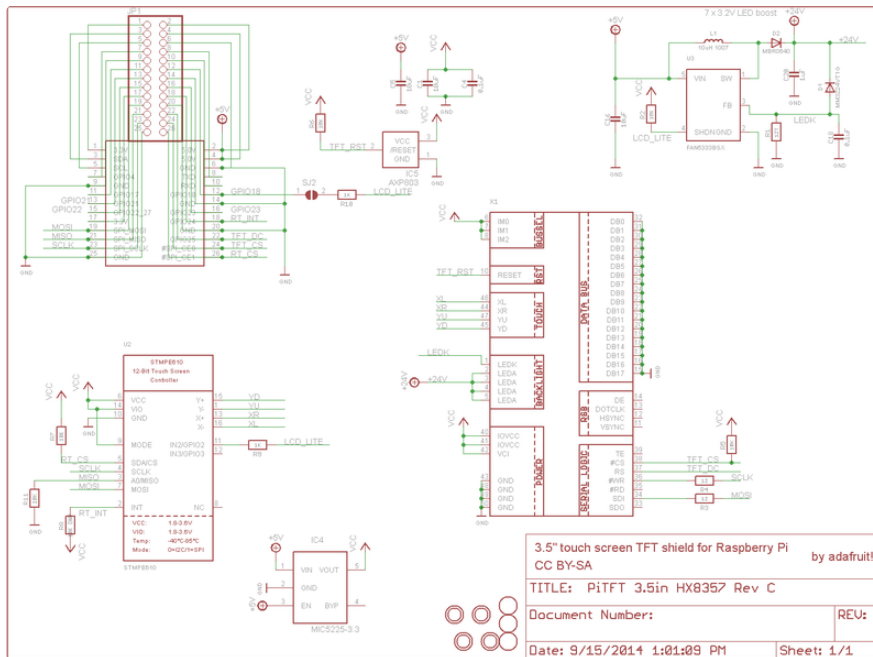
This is the newer PID 2441



Layout and Schematic for original PiTFT 3.5"

This is the original PID #2097 version





Mouser Electronics

Authorized Distributor

Click to View Pricing, Inventory, Delivery & Lifecycle Information:

[Adafruit:](#)

[2097](#)