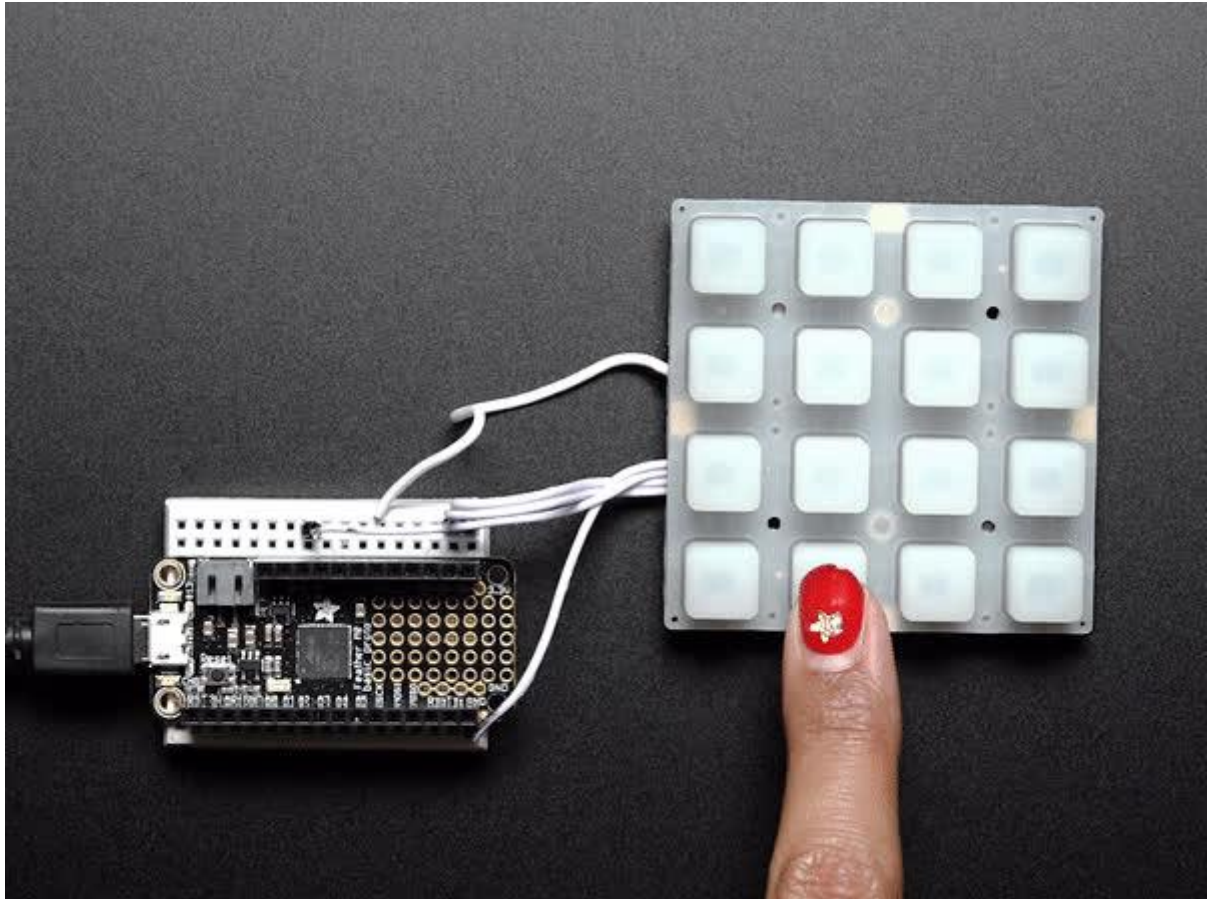




# Adafruit NeoTrellis

Created by lady ada



<https://learn.adafruit.com/adafruit-neotrellis>

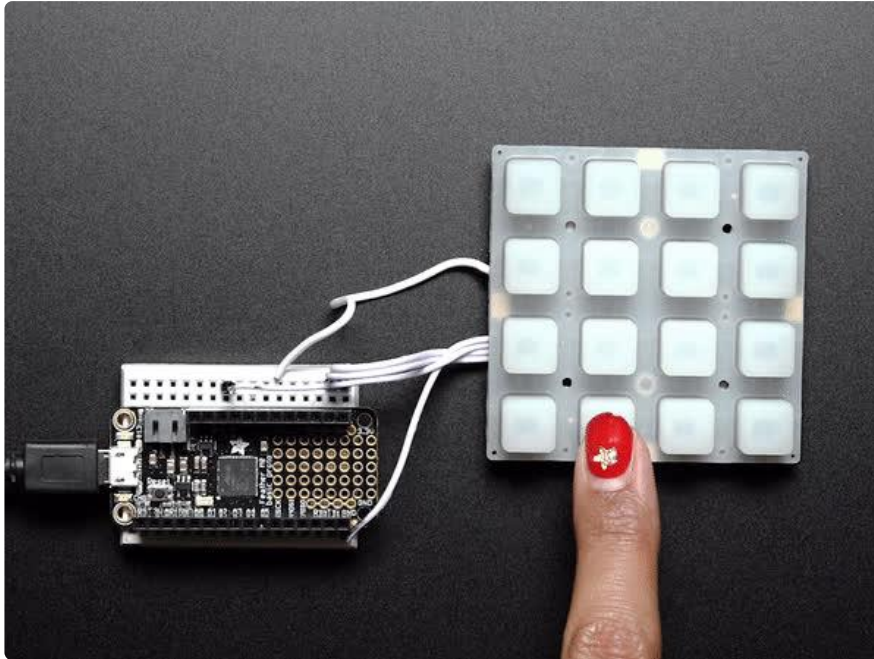
Last updated on 2021-11-15 07:21:49 PM EST

# Table of Contents

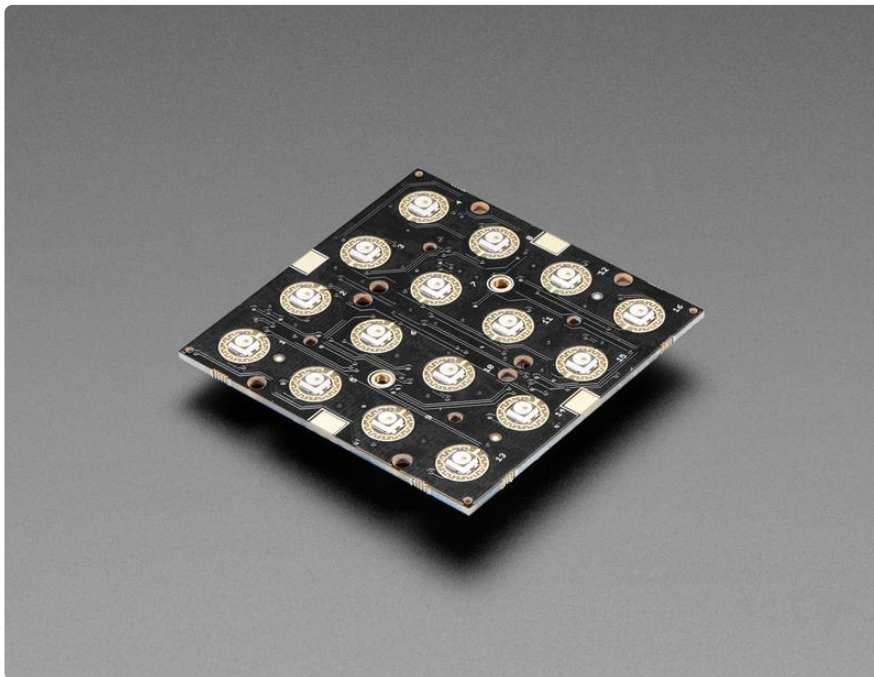
Overview	3
Tiling	5
• Addressing	9
• Changing Addresses	9
• Address Cheat Sheet	10
Arduino Code	12
• Install Arduino Libraries	12
• Basic Example	13
• Using the Interrupt Pin	14
• Tiling multiple NeoTrellis boards	15
Arduino Library Documentation	16
CircuitPython & Python	16
• CircuitPython Microcontroller Wiring	16
• Python Computer Wiring	17
• CircuitPython Installation of NeoTrellis Library	17
• Python Installation of NeoTrellis Library	18
• CircuitPython & Python Usage	18
• Connecting multiple NeoTrellis boards	20
Python Docs	21
Downloads	21
• Files:	21
• Schematic and Fab Print	22
F.A.Q.	23
• When I press a button on the NeoTrellis a whole row is activated	23

---

# Overview

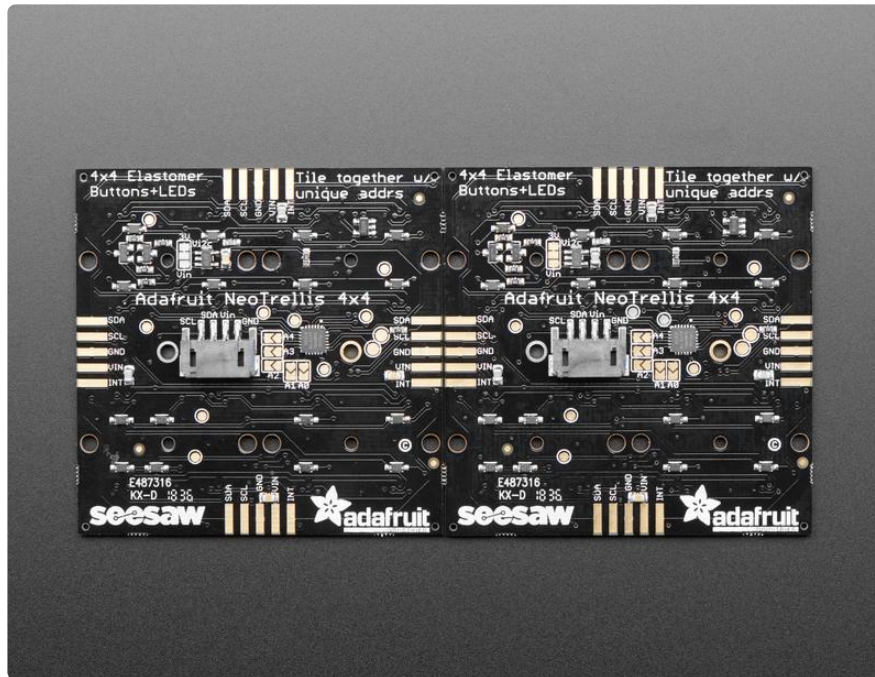


By popular request, we've upgraded our popular Trellis elastomer button kits to now have a PCB with full color NeoPixel support! You heard that right, no more single-color LEDs, you can now have any color you like under the fantastic rubbery button pads we sell.

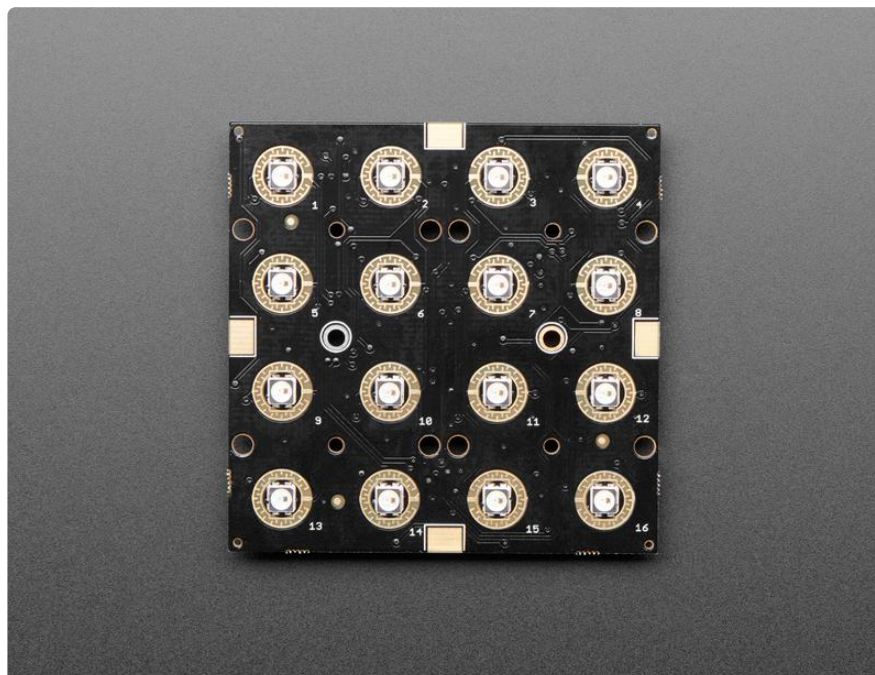


These 4x4 button pad boards are fully tile-able and communicate over I2C. With 5 address pins, you've got the ability to connect up to 32 together in any arrangement you like. [With our trusty seesaw I2C-to-anything chip \(https://adafru.it/Cmk\)](https://adafru.it/Cmk), you don't

even need to manage the NeoPixel driving. That's right! Both the button management and LED driving is completely handled for you all over plain I2C. With both Arduino/C++ and CircuitPython/Python library support, you can use these pads with any and all microcontroller or computer boards.

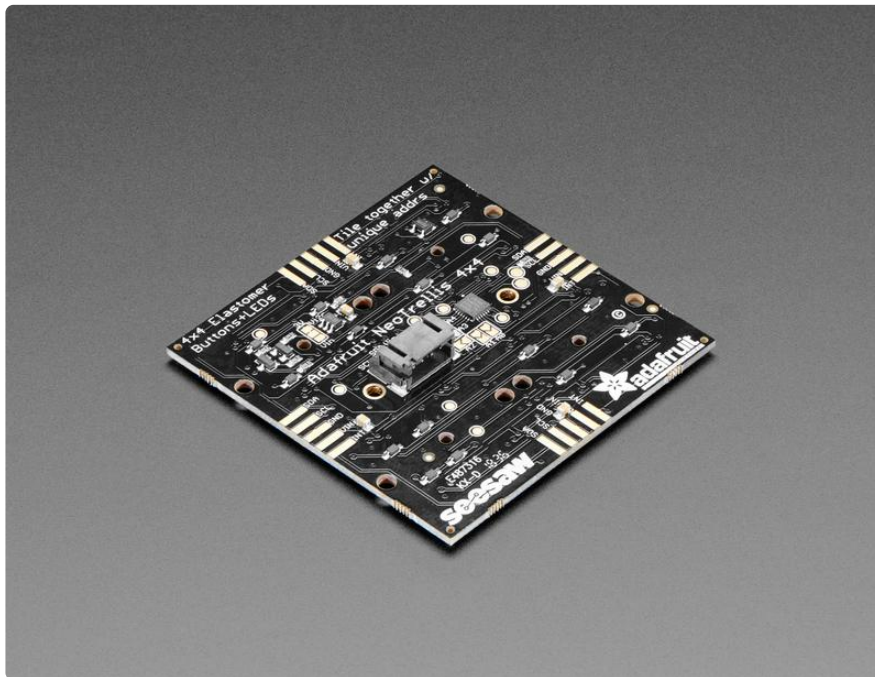


Perfect for your next cool interface, MIDI instrument, control panel...whatever could benefit from beautiful diffused colorful buttons. For fast connection to a single board, we include a JST-PH 4-pin connector that will give you power+data access. It's Grove compatible (the cable fits, even though its not the exact same connector), [or you can use a JST-PH 4 pin cable \(https://adafru.it/CzH\)](https://adafru.it/CzH).





Each order comes with one NeoTrellis board with seesaw chip and 16 NeoPixels already soldered in place. Elastomer button pad not included, [so be sure to pick one up \(https://adafruit.it/dLy\)](https://adafruit.it/dLy)!

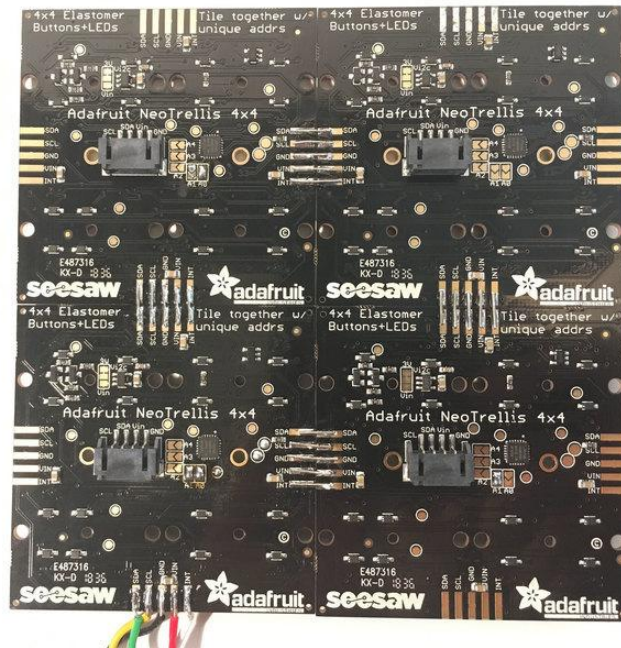


---

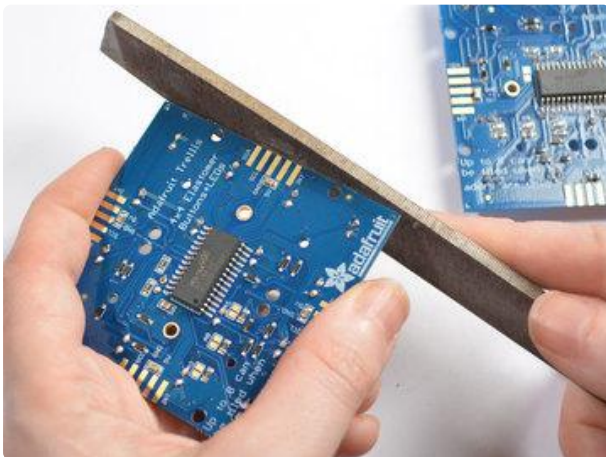
## Tiling

You can tile up to 32 NeoTrellis PCBs on a single 2-wire I2C bus. This allows you to easily build up to 16x16 larger panels which can be lots of fun!

To start with, its a good idea to assemble and test each individually so you know each NeoTrellis works individually.



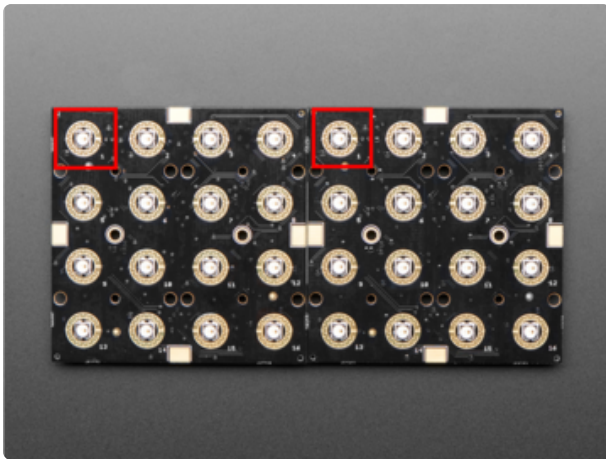
The photos below show the earlier non-Neo Trellis but the process is identical for NeoTrellis!



There's little nubs on the sides of some PCBs that keep them on the assembly panel, you can file them off with any file or sandpaper.



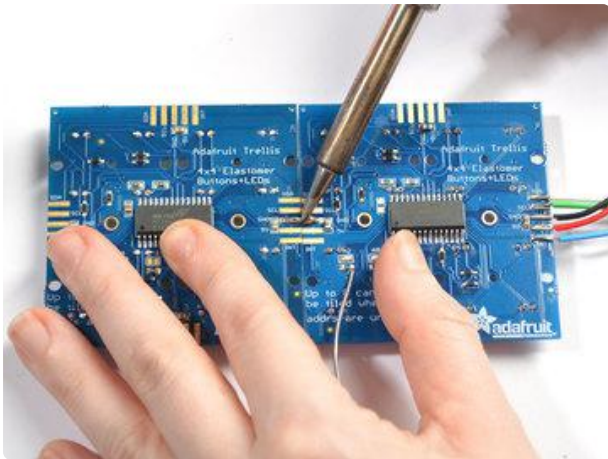
Arrange the tiles up the way you want, we'll start with two. Make sure the Adafruit logo is lined up the same.



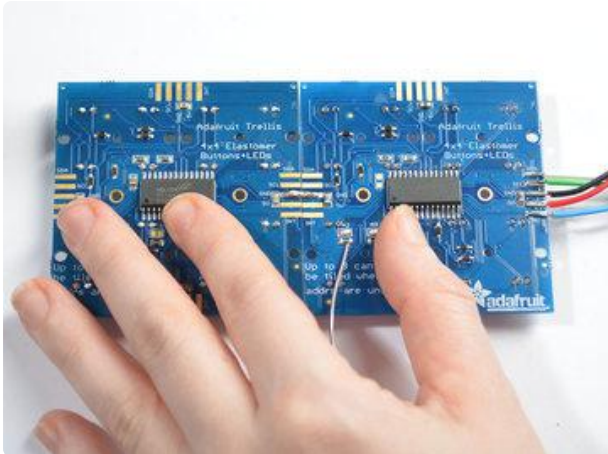
On the other side make sure LEDs #1 are in the same corner



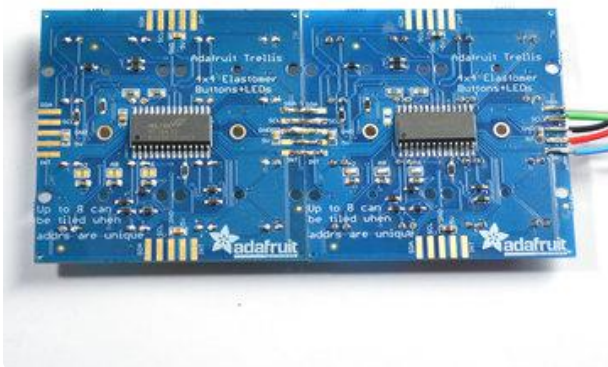
Solder two blobs of solder on two adjacent finger pads.



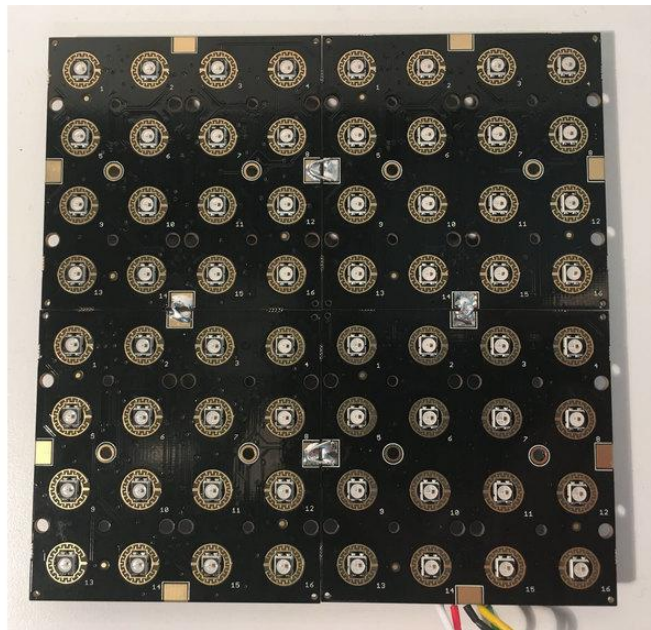
Use your soldering iron to drag solder from one pad to another, with a little effort they'll stick together and make a connection. You can add more solder to make the connection stronger. Its still not mechanically strong - so be careful not to bend or shake the arrangement



Repeat for the other 4 fingers







## Addressing

Each NeoTrellis tile must have a unique address. You can set the addresses on the back of each panel using a little solder over the address jumpers.

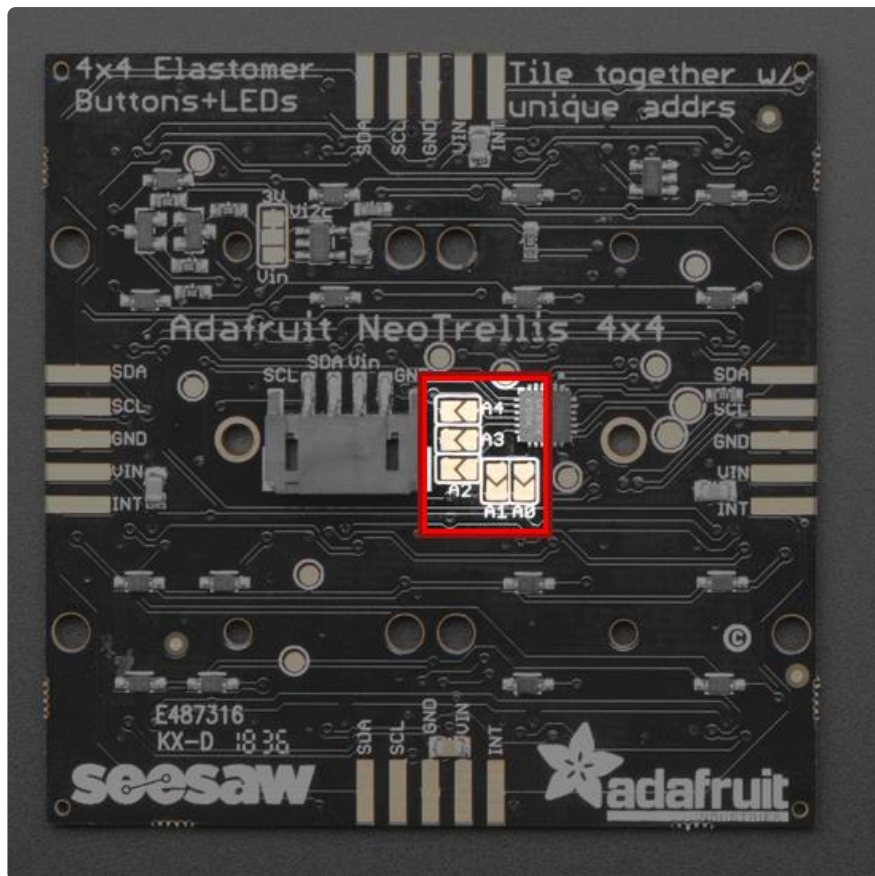
The seesaw driver chip on the Trellis has a default I2C address of 0x2E. Since each device on an I2C bus must have a unique address, it's important to avoid collisions or you'll get a lot of strange responses from your electronic devices!

Luckily, the seesaw has 5 address adjust pins, so that the address can be changed. Each pin changes one binary bit of the address, so you can set the address to any hex number between 0x2E and 0x4E inclusive

The panels don't have to have consecutive address #'s, they just have to be unique.

## Changing Addresses

You can change the address of very easily. Look on the back to find the three A0, A1, A2, A3 and A4 solder jumpers.



Each one of these is used to hard-code in the address. If a jumper is shorted with solder, that sets the address.

- A0 sets the lowest bit with a value of 1
- A1 sets the bit with a value of 2
- A2 sets the bit with a value of 4
- A3 sets the bit with a value of 8
- A4 sets the bit with a value of 16

The final address is  $0x2E + A4 + A3 + A2 + A1 + A0$ . So for example if A2 is shorted and A0 is shorted, the address is  $0x2E + 4 + 1 = 0x33$

## Address Cheat Sheet

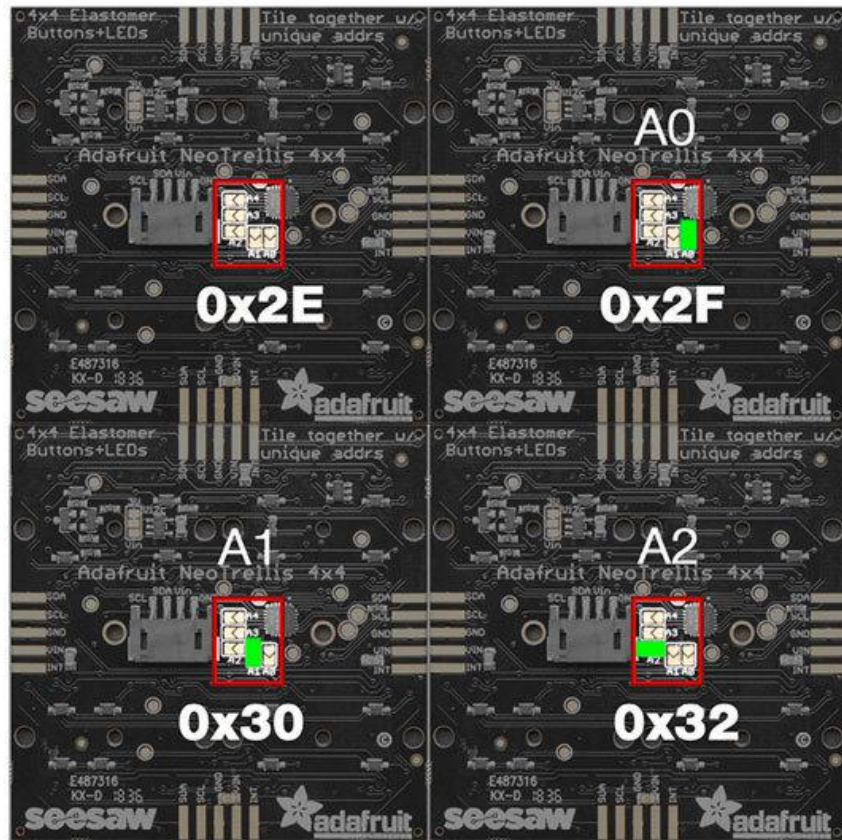
If you take on a project using many NeoTrellis boards, here's a handy cheat sheet for address/jumper value combos:

(default)	0x2E
A0 (+1)	0x2F
A1 (+2)	0x30
A2 (+4)	0x32
A3 (+8)	0x36
A4 (+16)	0x3E

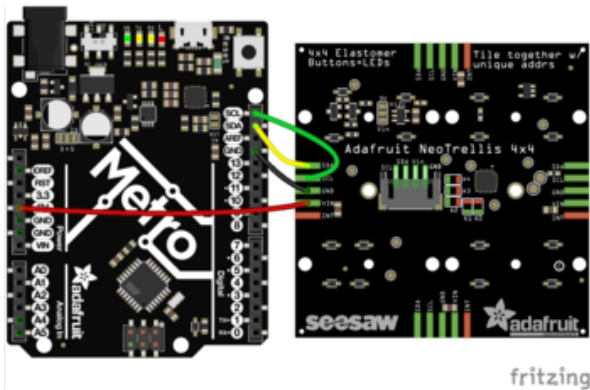
A0+A1 (+3)	0x31
A0+A2 (+5)	0x33
A0+A3 (+9)	0x37
A0+A4 (+17)	0x3F
A0+A1+A2 (+7)	0x35
A0+A1+A3 (+11)	0x39
A0+A1+A4 (+19)	0x41
A0+A1+A2+A3 (+15)	0x3d
A0+A1+A2+A4 (+23)	0x45
A0+A1+A2+A3+A4 (+31)	0x4d
A0+A2+A3 (+13)	0x39
A0+A2+A3+A4 (+29)	0x4b
A0+A2+A4 (+21)	0x43
A0+A3+A4 (+25)	0x47
A1+A2 (+6)	0x34
A1+A3 (+10)	0x38
A1+A4 (+18)	0x40
A1+A2+A3 (+14)	0x3c
A1+A2+A3+A4 (+30)	0x4c
A1+A3+A4 (+26)	0x48
A2+A3 (+12)	0x3a
A2+A4 (+20)	0x42
A2+A3+A4 (+28)	0x4a
A3+A4 (+24)	0x46

Thanks to [Okyeron \(https://adafru.it/IDe\)](https://adafru.it/IDe) on the Lines forum for creating this list.

Here's an example of address jumper settings for an 8x8 grid from Okyeron:



## Arduino Code



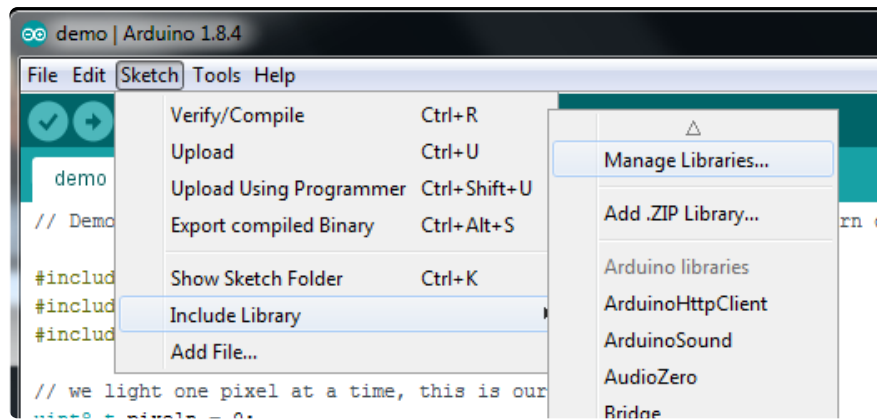
Wiring is easy, solder the four VIN GND SDA SCL pads to wires and then connect to your Arduino compatible:

- VIN to 5V (or 3.3V if 5V is not available)
- GND to GND
- SDA to I2C data SDA
- SCL to I2C clock SCL

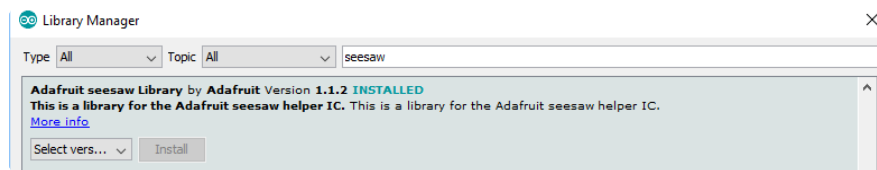
## Install Arduino Libraries

Lets begin by installing all the libraries we need. Open up the library manager in Arduino IDE



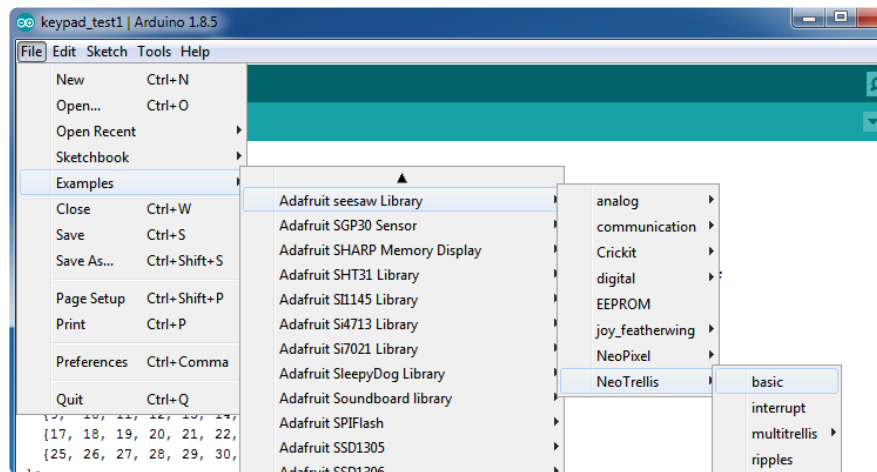


Search for and install the latest version of the Adafruit seesaw library



## Basic Example

Start by opening up the NeoTrellis -> basic under the Adafruit Seesaw library:

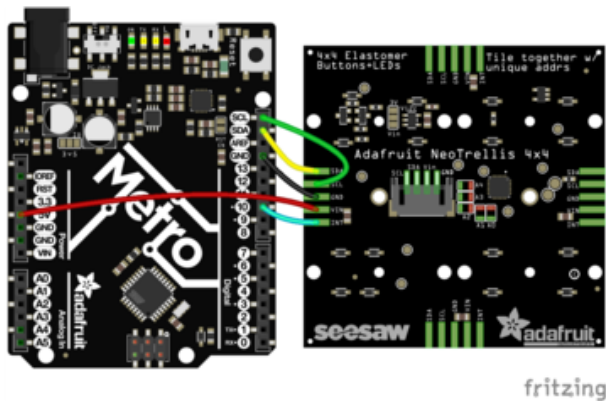


And upload it to your board!

You will see all the LEDs run a pattern in a color gradient. Then once the pattern is done, pressing any key will cause the led underneath to light up. Releasing the key will turn the LED off.

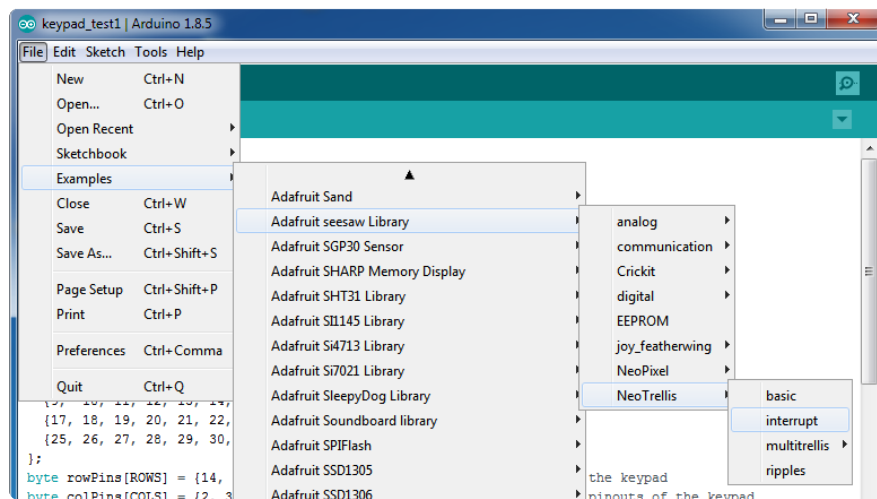
# Using the Interrupt Pin

The pad labeled INT on the NeoTrellis board will be pulled LOW when an event the user has subscribed to is detected. To test this functionality, solder a wire to any of the four pads labeled INT and connect that to a digital pin on your host microcontroller board.



Use the same wiring from before, but this time connect INT to digital pin #10 (you can change this later)

Open up the NeoTrellis -> interrupt under the Adafruit Seesaw library and upload to your board.



The behavior is identical to the basic example, but the INT pin is used instead of polling the NeoTrellis for new data. This frees up more time for your host microcontroller to do other things!

# Tiling multiple NeoTrellis boards

Multiple NeoTrellis boards can be tiled together for a larger grid of buttons and lights without taking up any extra pins on your host microcontroller!

To do this, lay the boards you wish to connect side by side in the desired arrangement so that the pins match up. Then solder them together and set the unique I2C address on the back with solder jumpers (<https://adafru.it/Czl>)

The alignment of the boards does matter! The pad marked '1' should always be in the top lefthand corner.

The base I2C address for the NeoTrellis board is 0x2E and to calculate the selected I2C address for a given jumper configuration use this formula:

$$\text{Addr} = 0x2E + (1*A0) + (2*A1) + (4*A2) + (8*A3) + (16*A4)$$

Where each A term is 1 if the jumper is soldered, and 0 if it is not. For example, if only the A0 jumper is soldered, the I2C address would be  $0x2E + 1 = 0x2F$ . If both the A0 and A1 jumper were soldered, the address would be  $0x2E + 1 + 2 = 0x31$ .

Once your boards are connected and your I2C addresses selected, load up the NeoTrellis -> multitrellis -> basic example from the Adafruit Seesaw library.

Change the definitions and variables at the top of the file to match your current configuration:

```
#define Y_DIM 4 //number of rows of key
#define X_DIM 8 //number of columns of keys

//create a matrix of trellis panels
Adafruit_NeoTrellis t_array[Y_DIM/4][X_DIM/4] = {
    { Adafruit_NeoTrellis(0x2E), Adafruit_NeoTrellis(0x2F) }
};
```

The above code works for two NeoTrellis boards connected side by side. If you were using a 2x2 array of boards, the above lines would be:

```
#define Y_DIM 8 //number of rows of key
#define X_DIM 8 //number of columns of keys

//create a matrix of trellis panels
Adafruit_NeoTrellis t_array[Y_DIM/4][X_DIM/4] = {
```

```
{ Adafruit_NeoTrellis(0x2E), Adafruit_NeoTrellis(0x2F) },  
{Adafruit_NeoTrellis(YOUR_ADDR), Adafruit_NeoTrellis(YOUR_ADDR2)}  
};
```

---

## Arduino Library Documentation

[Arduino Library Documentation \(https://adafru.it/CzJ\)](https://adafru.it/CzJ)

---

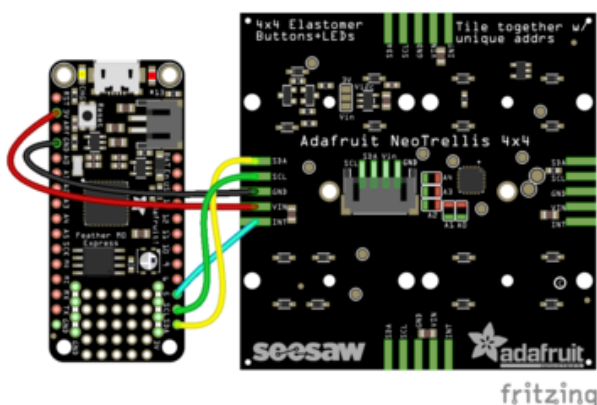
## CircuitPython & Python

It's easy to use NeoTrellis panels with Python or CircuitPython and the [Adafruit CircuitPython NeoTrellis \(https://adafru.it/CzK\)](https://adafru.it/CzK) module. This module allows you to easily write Python code that reads the button presses, and then light up the LEDs

You can use NeoTrellis with any CircuitPython microcontroller board or with a computer that has GPIO and Python [thanks to Adafruit\\_Blinka, our CircuitPython-for-Python compatibility library \(https://adafru.it/BSN\)](https://adafru.it/BSN).

## CircuitPython Microcontroller Wiring

First wire up a NeoTrellis to your board exactly as shown on the previous pages for Arduino.



Wiring is easy, solder the four VIN GND SDA SCL pads to wires and then connect to your CircuitPython device

- VIN to USB (if you are going to have it always plugged into USB), BAT (if you're always going to have a lipo battery plugged in) or 3.3V (if you're not sure)
- GND to GND
- SDA to I2C data SDA
- SCL to I2C clock SCL

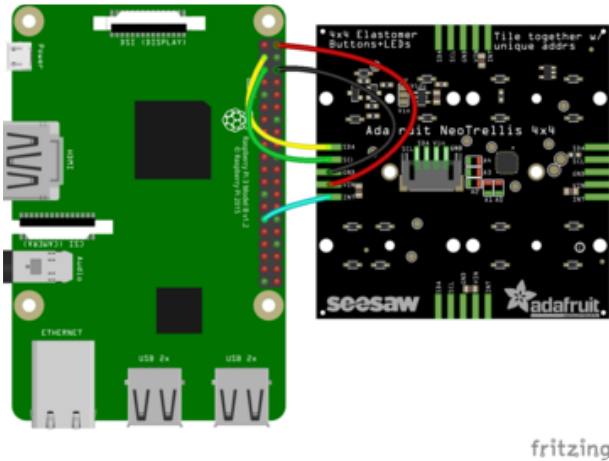
If you want to use the interrupt pin, wire that as well to a digital I/O pin. We'll be using #5 by default



# Python Computer Wiring

Since there's dozens of Linux computers/boards you can use we will show wiring for Raspberry Pi. For other platforms, [please visit the guide for CircuitPython on Linux to see whether your platform is supported](https://adafru.it/BSN) (<https://adafru.it/BSN>).

Here's the Raspberry Pi wired with I2C:



Wiring is easy, solder the four VIN GND SDA SCL pads to wires and then connect to your CircuitPython device

- VIN to 5V
- GND to GND
- SDA to I2C data SDA
- SCL to I2C clock SCL

If you want to use the interrupt pin, wire that as well to a digital I/O pin. We'll be using GPIO #5 by default

## CircuitPython Installation of NeoTrellis Library

You'll need to install the [Adafruit CircuitPython NeoTrellis](https://adafru.it/CzK) (<https://adafru.it/CzK>) library on your CircuitPython board.

First make sure you are running the [latest version of Adafruit CircuitPython](https://adafru.it/Amd) (<https://adafru.it/Amd>) for your board.

Next you'll need to install the necessary libraries to use the hardware--carefully follow the steps to find and install these libraries from [Adafruit's CircuitPython library bundle](https://adafru.it/uap) (<https://adafru.it/uap>). Our CircuitPython starter guide has [a great page on how to install the library bundle](https://adafru.it/ABU) (<https://adafru.it/ABU>).

For non-express boards like the Trinket M0 or Gemma M0, you'll need to manually install the necessary libraries from the bundle:

- adafruit\_neotrellis
- adafruit\_seesaw

- adafruit\_bus\_device

Before continuing make sure your board's lib folder or root filesystem has the adafruit\_seesaw, adafruit\_neotrellis, and adafruit\_bus\_device files and folders copied over.

Next [connect to the board's serial REPL \(https://adafru.it/Awz\)](https://adafru.it/Awz) so you are at the CircuitPython >>> prompt.

## Python Installation of NeoTrellis Library

You'll need to install the Adafruit\_Blinka library that provides the CircuitPython support in Python. This may also require enabling I2C on your platform and verifying you are running Python 3. [Since each platform is a little different, and Linux changes often, please visit the CircuitPython on Linux guide to get your computer ready \(https://adafru.it/BSN\)](https://adafru.it/BSN)!

Once that's done, from your command line run the following command:

- `sudo pip3 install adafruit-circuitpython-neotrellis`

If your default Python is version 3 you may need to run 'pip' instead. Just make sure you aren't trying to use CircuitPython on Python 2.x, it isn't supported!

## CircuitPython & Python Usage

To demonstrate the usage of the board we will initialize and run an example.

If you're using an I2C connection run the following code to import the necessary modules and initialize the I2C connection with the board:

```
import time
from board import SCL, SDA
import busio
from adafruit_neotrellis.neotrellis import NeoTrellis

#create the i2c object for the trellis
i2c_bus = busio.I2C(SCL, SDA)

#create the trellis
trellis = NeoTrellis(i2c_bus)
```

Next lets define the function we want to call when a button is pressed or released:

```

OFF = (0, 0, 0)
CYAN = (0, 255, 255)

def blink(event):
    #turn the LED on when a rising edge is detected
    if event.edge == NeoTrellis.EDGE_RISING:
        trellis.pixels[event.number] = CYAN
    #turn the LED off when a rising edge is detected
    elif event.edge == NeoTrellis.EDGE_FALLING:
        trellis.pixels[event.number] = OFF

```

Now lets activate all the buttons and hook up the callbacks:

```

for i in range(16):
    #activate rising edge events on all keys
    trellis.activate_key(i, NeoTrellis.EDGE_RISING)
    #activate falling edge events on all keys
    trellis.activate_key(i, NeoTrellis.EDGE_FALLING)
    #set all keys to trigger the blink callback
    trellis.callbacks[i] = blink

```

Finally, we poll for new events in a loop:

```

while True:
    #call the sync function call any triggered callbacks
    trellis.sync()
    #the trellis can only be read every 10 milliseconds or so
    time.sleep(.02)

```

This will turn on the corresponding LED when a button is being pressed, and then turn the LED off when the button is released.

Here is a complete example:

```

# SPDX-FileCopyrightText: 2021 ladyada for Adafruit Industries
# SPDX-License-Identifier: MIT

import time

from board import SCL, SDA
import busio
from adafruit_neotrellis.neotrellis import NeoTrellis

# create the i2c object for the trellis
i2c_bus = busio.I2C(SCL, SDA)

# create the trellis
trellis = NeoTrellis(i2c_bus)

# some color definitions
OFF = (0, 0, 0)
RED = (255, 0, 0)
YELLOW = (255, 150, 0)
GREEN = (0, 255, 0)
CYAN = (0, 255, 255)
BLUE = (0, 0, 255)
PURPLE = (180, 0, 255)

```

```

# this will be called when button events are received
def blink(event):
    # turn the LED on when a rising edge is detected
    if event.edge == NeoTrellis.EDGE_RISING:
        trellis.pixels[event.number] = CYAN
    # turn the LED off when a rising edge is detected
    elif event.edge == NeoTrellis.EDGE_FALLING:
        trellis.pixels[event.number] = OFF

for i in range(16):
    # activate rising edge events on all keys
    trellis.activate_key(i, NeoTrellis.EDGE_RISING)
    # activate falling edge events on all keys
    trellis.activate_key(i, NeoTrellis.EDGE_FALLING)
    # set all keys to trigger the blink callback
    trellis.callbacks[i] = blink

    # cycle the LEDs on startup
    trellis.pixels[i] = PURPLE
    time.sleep(0.05)

for i in range(16):
    trellis.pixels[i] = OFF
    time.sleep(0.05)

while True:
    # call the sync function call any triggered callbacks
    trellis.sync()
    # the trellis can only be read every 17 milliseconds or so
    time.sleep(0.02)

```

## Connecting multiple NeoTrellis boards

Multiple NeoTrellis boards can be chained together if they are set to different I2C addresses. See the [Arduino Code \(https://adafru.it/CzL\)](https://adafru.it/CzL) section of this guide for information on how to connect the boards and set the I2C addresses, and then run this example to test your setup!

```

# SPDX-FileCopyrightText: 2021 ladyada for Adafruit Industries
# SPDX-License-Identifier: MIT

import time

from board import SCL, SDA
import busio
from adafruit_neotrellis.neotrellis import NeoTrellis
from adafruit_neotrellis.multitrellis import MultiTrellis

# create the i2c object for the trellis
i2c_bus = busio.I2C(SCL, SDA)

"""create the trellis. This is for a 2x2 array of NeoTrellis boards
for a 2x1 array (2 boards connected left to right) you would use:

trelli = [
    [NeoTrellis(i2c_bus, False, addr=0x2E), NeoTrellis(i2c_bus, False, addr=0x2F)]
]

"""
trelli = [

```



```

[NeoTrellis(i2c_bus, False, addr=0x2E), NeoTrellis(i2c_bus, False, addr=0x2F)],
[NeoTrellis(i2c_bus, False, addr=0x30), NeoTrellis(i2c_bus, False, addr=0x31)],
]

trellis = MultiTrellis(trelli)

# some color definitions
OFF = (0, 0, 0)
RED = (255, 0, 0)
YELLOW = (255, 150, 0)
GREEN = (0, 255, 0)
CYAN = (0, 255, 255)
BLUE = (0, 0, 255)
PURPLE = (180, 0, 255)

# this will be called when button events are received
def blink(xcoord, ycoord, edge):
    # turn the LED on when a rising edge is detected
    if edge == NeoTrellis.EDGE_RISING:
        trellis.color(xcoord, ycoord, BLUE)
    # turn the LED off when a rising edge is detected
    elif edge == NeoTrellis.EDGE_FALLING:
        trellis.color(xcoord, ycoord, OFF)

for y in range(8):
    for x in range(8):
        # activate rising edge events on all keys
        trellis.activate_key(x, y, NeoTrellis.EDGE_RISING)
        # activate falling edge events on all keys
        trellis.activate_key(x, y, NeoTrellis.EDGE_FALLING)
        trellis.set_callback(x, y, blink)
        trellis.color(x, y, PURPLE)
        time.sleep(0.05)

for y in range(8):
    for x in range(8):
        trellis.color(x, y, OFF)
        time.sleep(0.05)

while True:
    # the trellis can only be read every 17 milliseconds or so
    trellis.sync()
    time.sleep(0.02)

```

---

## Python Docs

[Python Docs \(https://adafru.it/Ga3\)](https://adafru.it/Ga3)

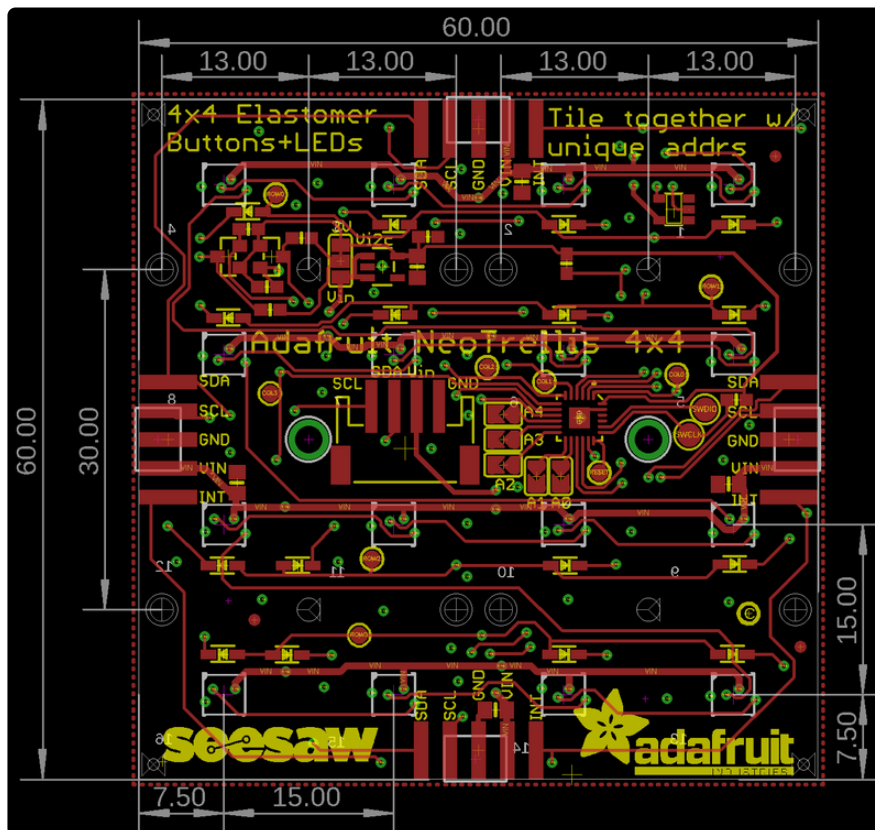
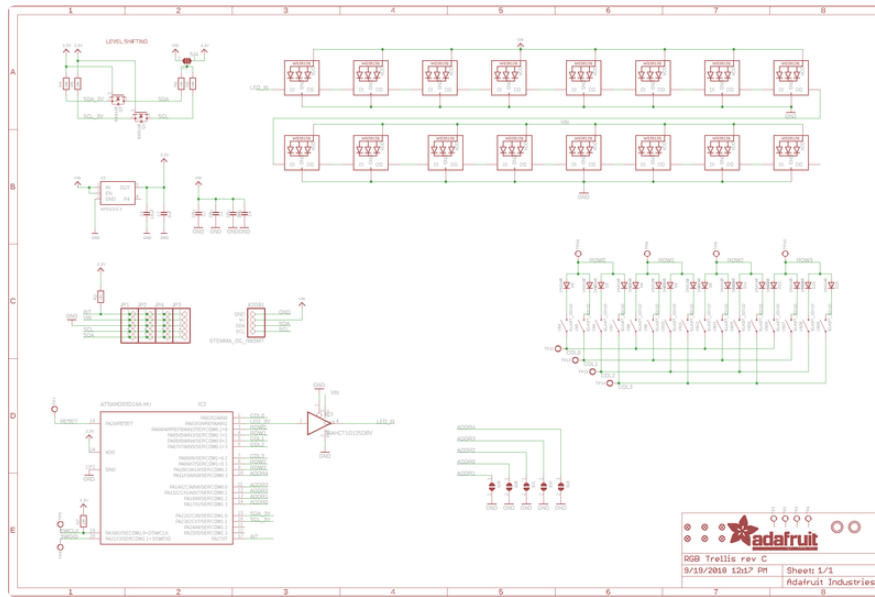
---

## Downloads

## Files:

- [Fritzing object in Adafruit Fritzing library \(https://adafru.it/c7M\)](https://adafru.it/c7M)
- [EagleCAD PCB files in GitHub \(https://adafru.it/Cz2\)](https://adafru.it/Cz2)

# Schematic and Fab Print



---

## F.A.Q.

### When I press a button on the NeoTrellis a whole row is activated

It's possible to accidentally "press" a column of four buttons even when you intend to only press one. This can happen when you press a button at an angle other than straight down on top of the button pad. The elastomer conductive part touches the NeoPixel ground pin against the column which makes the chip think the whole row/column is pressed. It only happens on some buttons and some angles, and is not common

It's not harmful, and there's a few ways to avoid it:

- Press straight down on buttons not at an angle
- Cut a thicker top panel from wood/plastic/3D printing so that the buttons cannot be pressed at an angle
- Perform software filtering to remove the duplicate button presses

# Mouser Electronics

Authorized Distributor

Click to View Pricing, Inventory, Delivery & Lifecycle Information:

[Adafruit:](#)

[3954](#)