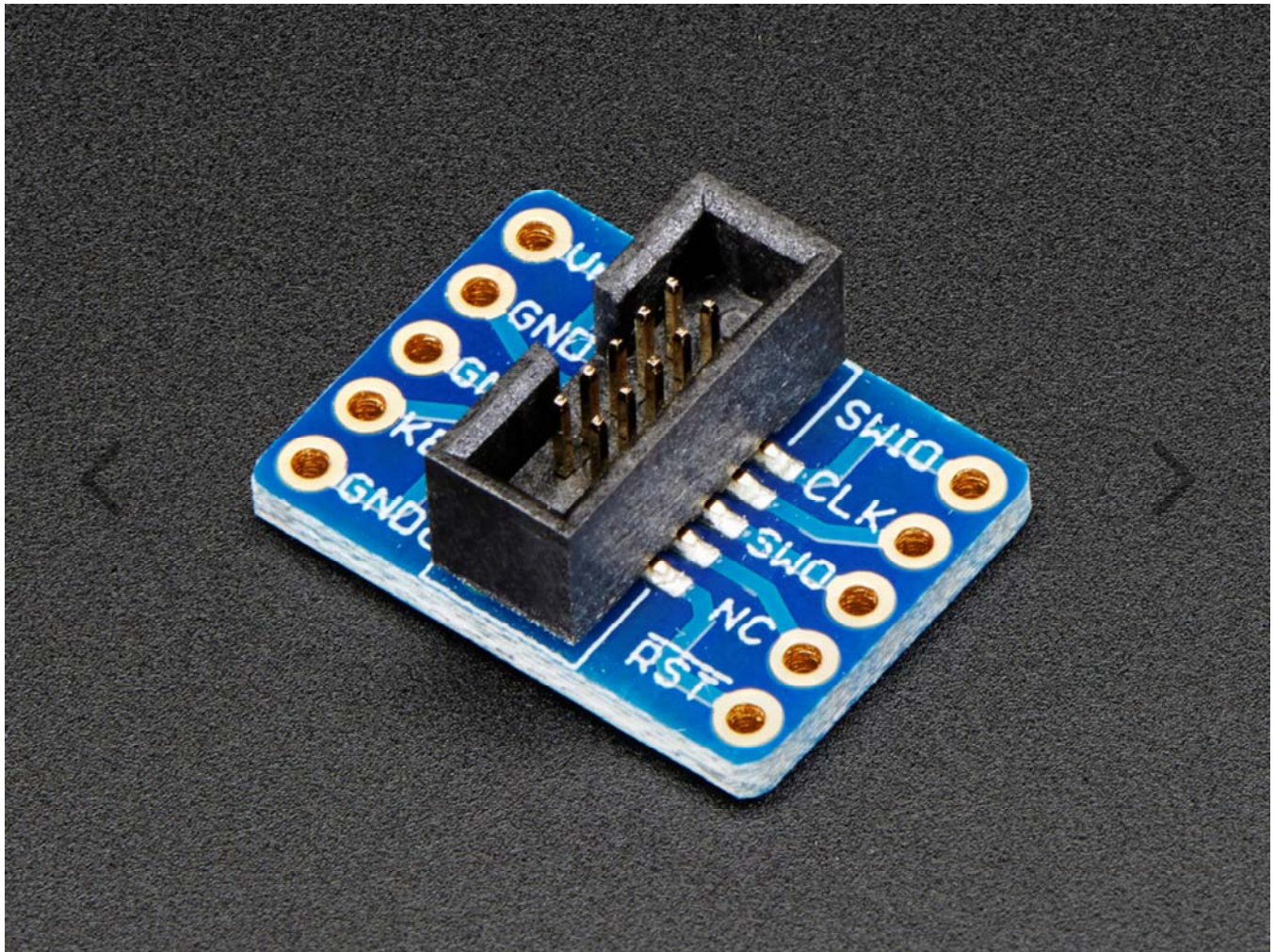


SWD (2x5 1.27mm) Cable Breakout Board

PRODUCT ID: 2743



DESCRIPTION

This adapter board is designed to make it easier to use ARM dev boards that use slimmer 2x5 (0.05"/1.27mm pitch) SWD cables for programming. It's helpful for using products like the JTAGulator, STLink or SEGGER J-Link with tiny boards that use the 10-pin SWD programming connector, often Cortex M0 or M3's.

This board comes with no cables. It's really just the breakout board and some header if you need it – but is super helpful when you want to use JTAG/SWD debugging. We do stock the SWD cable if you need one here and have a 'classic' JTAG to SWD converter board here.

Technical Details

14mm x 18mm x 7mm / 0.55" x 0.7" x 0.3"

Weight: 1g

Mouser Electronics

Authorized Distributor

Click to View Pricing, Inventory, Delivery & Lifecycle Information:

[Adafruit:](#)

[2743](#)