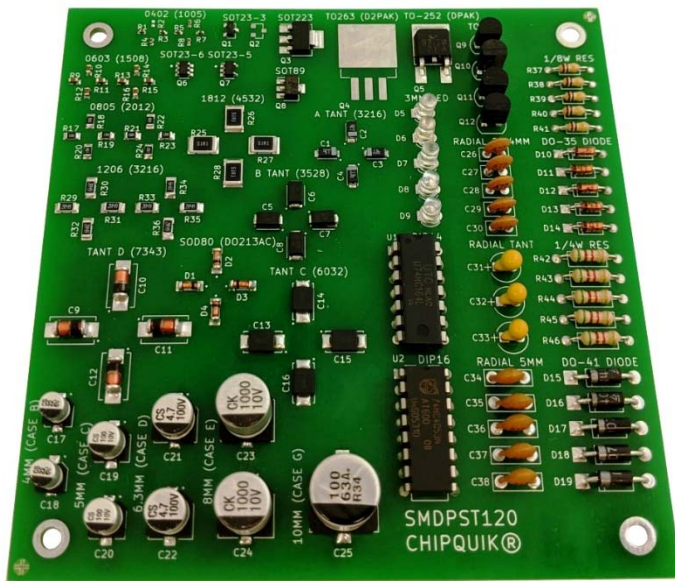


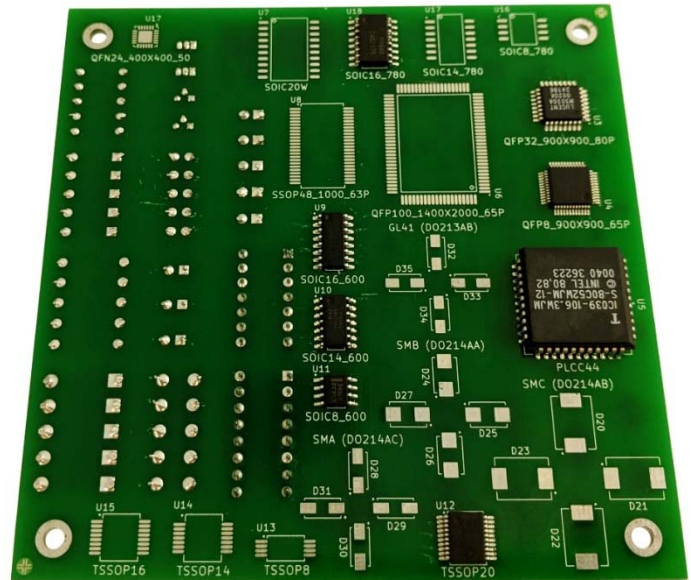
## Solder Training Board with many configurations & components (120 parts)

Product comes unassembled with 120 parts.

Assembled Photos:



Top



Bottom

### Product Highlights

This double-sided practice PCB includes a variety of SMD and TH configurations. Populate the board with an assortment of 120 components (included). All component footprints are clearly marked on board.

### Specifications

PCB construction: FR-4 UL94V-0

PCB operating temperature range: -40°C to +130°C (-40°F to +266°F)

PCB reflow maximum temperature: +260°C (500°F)



# Mouser Electronics

Authorized Distributor

Click to View Pricing, Inventory, Delivery & Lifecycle Information:

[Chip Quik:](#)

[SMDPST120](#)