

CQ-ESD-MAT and Accessories

Product Highlights

Chip Quik ESD Mats are 0.079" (2mm) thick and come in sizes of 1x1 feet, 1x2 feet, 2x3 feet, 2x4 feet, as well as 50-foot-long rolls in widths of 2, 2.5, 3 and 4 feet. High Temperature Resistant, designed for use with soldering irons and hot air soldering/desoldering equipment.

RoHS 3 and REACH compliant

Specifications

Thickness: 0.079" (2mm)

Resistance (Surface to Ground): 1×10^6 to 1×10^9 ohms

Resistance (Surface to Surface): 1×10^6 to 1×10^9 ohms

Temperature Resistance: -25°C up to 450°C (Contact with soldering materials for short durations up to 200-300°C usually will not cause discoloration. Slight discoloration may occur if high heat is applied for long durations.)



Orderable Part Numbers

Part Number	Color	Size (Tolerance)	Thickness	Resistance
CQ-ESD-MAT-1x1	Light Blue	1' x 1' (-0/+2%)	0.079"	10^6 to 10^9 ohm
CQ-ESD-MAT-1x2	Light Blue	1' x 2' (-0/+2%)	0.079"	10^6 to 10^9 ohm
CQ-ESD-MAT-2x3	Light Blue	2' x 3' (-0/+2%)	0.079"	10^6 to 10^9 ohm
CQ-ESD-MAT-2x4	Light Blue	2' x 4' (-0/+2%)	0.079"	10^6 to 10^9 ohm
CQ-ESD-MAT-2x50	Light Blue	2' x 50' (-0/+2%)	0.079"	10^6 to 10^9 ohm
CQ-ESD-MAT-2.5x50	Light Blue	2.5' x 50' (-0/+2%)	0.079"	10^6 to 10^9 ohm
CQ-ESD-MAT-3x50	Light Blue	3' x 50' (-0/+2%)	0.079"	10^6 to 10^9 ohm
CQ-ESD-MAT-4x50	Light Blue	4' x 50' (-0/+2%)	0.079"	10^6 to 10^9 ohm
CQ-ESD-WRIST-1	Light Blue	3'-6' stretch		1M ohm
CQ-GROUND-CORD-1	Black	6'		1M ohm
CQ-ESD-BUTTON-1	Metal			
CQ-ESD-CRIMPER-1	Green/Red			

What's Included

- 1x1 foot, 1x2 foot, 2x3 foot and 2x4 foot ESD Mats each come with two grounding buttons pre-installed, as well as one wrist strap and one grounding cord.
- 50-foot rolls do not include grounding buttons, wrist straps or grounding cords, but those parts can be ordered separately.

Grounding

Lay the ESD Mat in position on your work surface (Light Blue side up, black side down). Snap the black ground cord to a grounding button on the ESD Mat. Connect the other end of the ground cord to a common ground point, such as the center screw of a standard AC electrical outlet, using the ring terminal located on the end of the ground cord. Testing is recommended to make sure the screw is properly grounded.

Product Photos



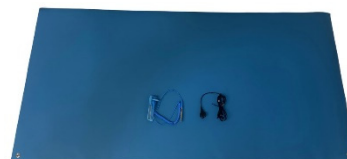
CQ-ESD-MAT-1x1



CQ-ESD-MAT-1x2



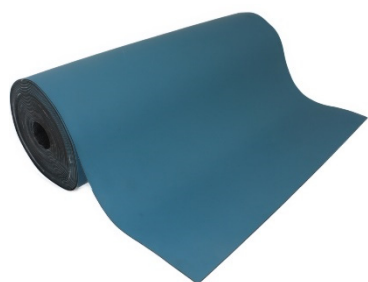
CQ-ESD-MAT-2x3



CQ-ESD-MAT-2x4

Continued on Next Page →

Product Photos Continued



CQ-ESD-MAT-2x50



CQ-ESD-MAT-2.5x50



CQ-ESD-MAT-3x50



CQ-ESD-MAT-4x50



CQ-ESD-WRIST-1



CQ-GROUND-CORD-1



CQ-ESD-BUTTON-1



CQ-ESD-CRIMPER-1

Mouser Electronics

Authorized Distributor

Click to View Pricing, Inventory, Delivery & Lifecycle Information:

[Chip Quik:](#)

[CQ-ESD-BUTTON-1](#)