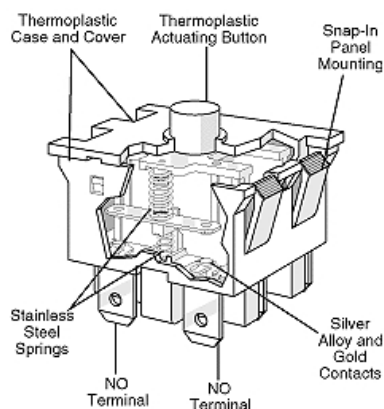


Two Circuit Line Interrupt Panel Mount Pushbutton Switch

FA Series



Features

- Compact size 1.26" L x 0.709" W
- Low operate force (400 grams max.)
- Choice of standard housing or button barrier
- Long stroke (Overtravel 4.3mm min.)
- Double make shorting bars
- Agency approved extended life standard
- 4mm (0.157") minimum contact gap

| Electrical Ratings and Operating Life | | | | |
|---------------------------------------|-----------------------------------|------------------|-------------------------------------|------------------|
| Switch Series | According to EN61058 | | According to UL1054 | |
| | Nominal Load | Operation cycles | Nominal Load | Operation cycles |
| FA1 | 16(4) A 250VAC, 6A 28VDC | 50,000 | 16A 125/250VAC, 6A 30VDC, 1A 50 VDC | 100,000 |
| FA2 | 10(3) A 250VAC, 3A 28VDC | 50,000 | 10.1A 125/250VAC, 30A 30VDC | 100,000 |
| FA3 | 0.1 (0.5) A 250VAC 0.25A 28VDC | 50,000 | 0.1A 125/250VAC 0.25A 30VDC | 100,000 |
| FA4 | Mix of FA3 and FA1 | 50,000 | Mix of FA3 and FA1 | 100,000 |

| Technical Specifications | | Material Specifications | |
|-------------------------------|---|-------------------------|---|
| Temperature Rating: | -25°C to + 85°C | Case: | Thermoplastic Nylon |
| Flammability Rating: | UL94V-0 | Actuator button: | Thermoplastic Nylon |
| Mechanical Life: | 1,000,000 cycles min. | Terminals: | FA1, FA2: Copper (Silver Plated) FA3: Copper Alloy |
| Electrical Life: | 100,000 cycles min. | Moving Blade: | FA1, FA2: Copper (Silver Plated) FA3: Copper |
| Insulation Resistance: | 1000MΩ min (DC 500V) (As initial value) | Springs: | Stainless Steel |
| Dielectric Strength: | 4000 V AC – for 1 minute | Contacts: | FA1, FA2: Silver Alloy FA3: Silver (Gold Plated) |
| Vibration Proof: | 10-55 Hz Peak to peak amplitude | | |
| Shock Proof: | 294 m/s ² | | |
| UL File Number: | E23301 | | |

RoHS Compliant

Specifications subject to change without notice

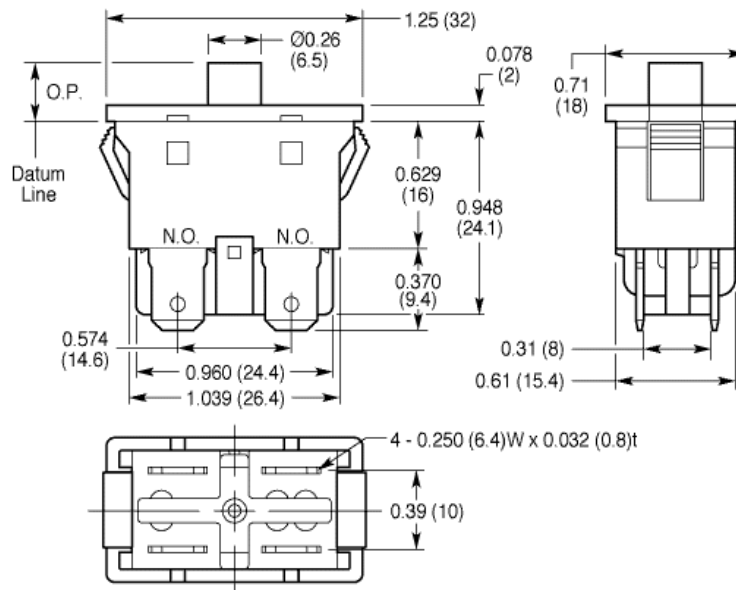


Two Circuit Line Interrupt Panel Mount Pushbutton Switch

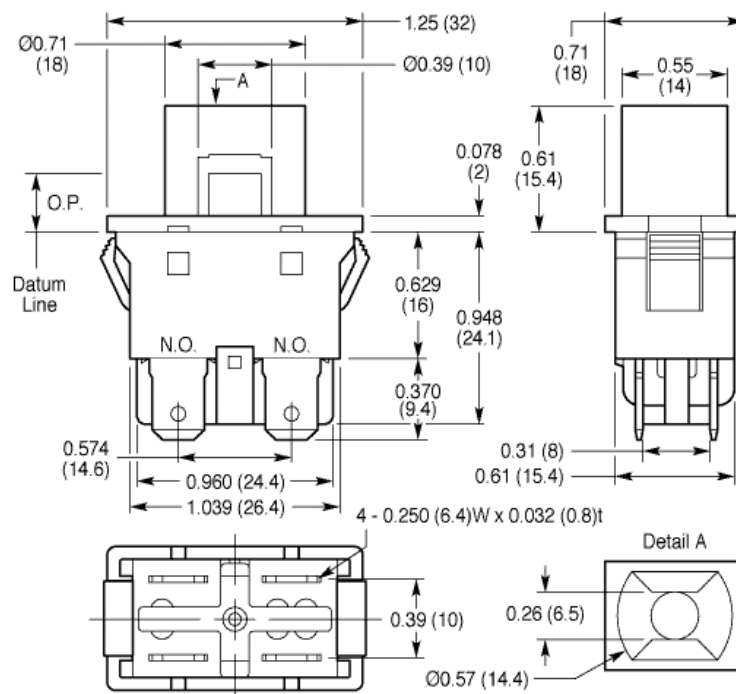
FA Series

Dimensions inches(mm)

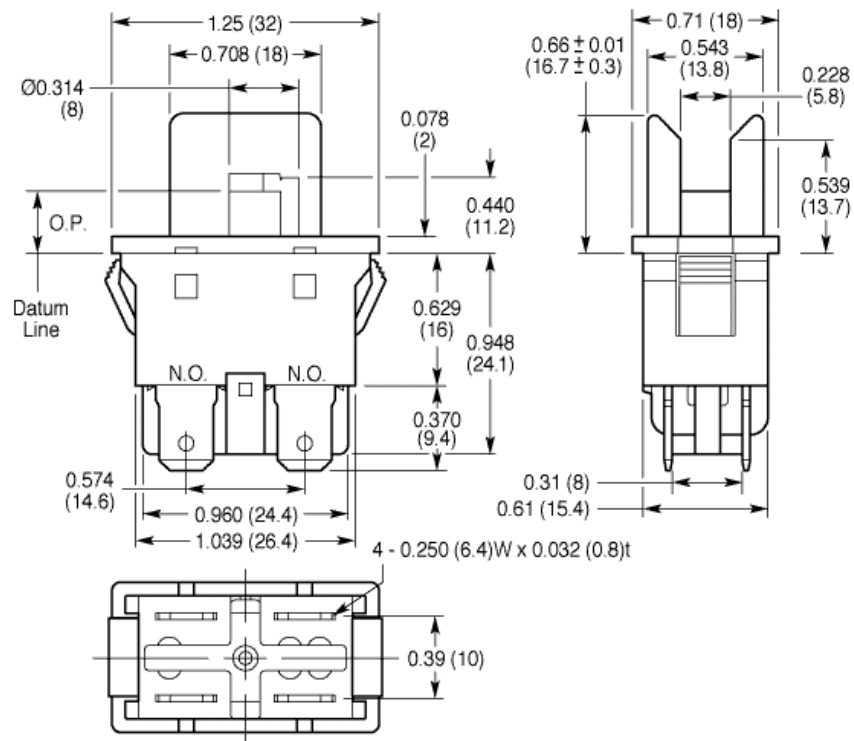
Case Style 'A'



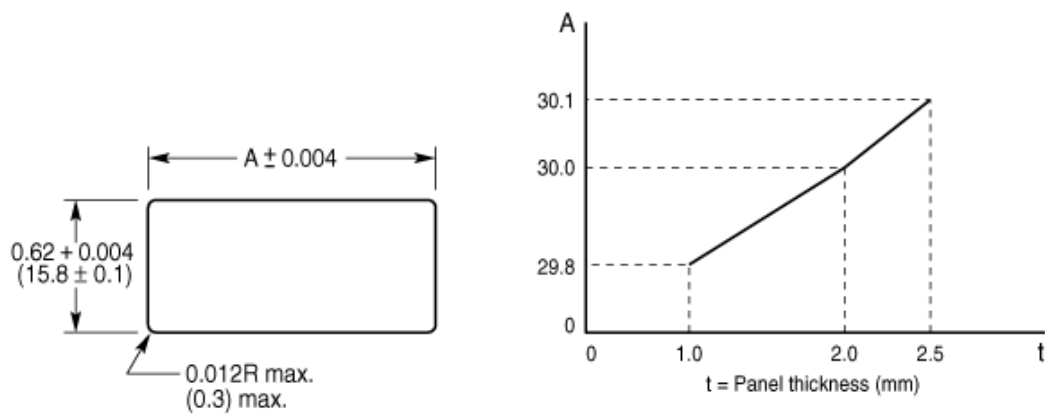
Case Style 'B'



Case Style 'C'



Panel Cutout Detail



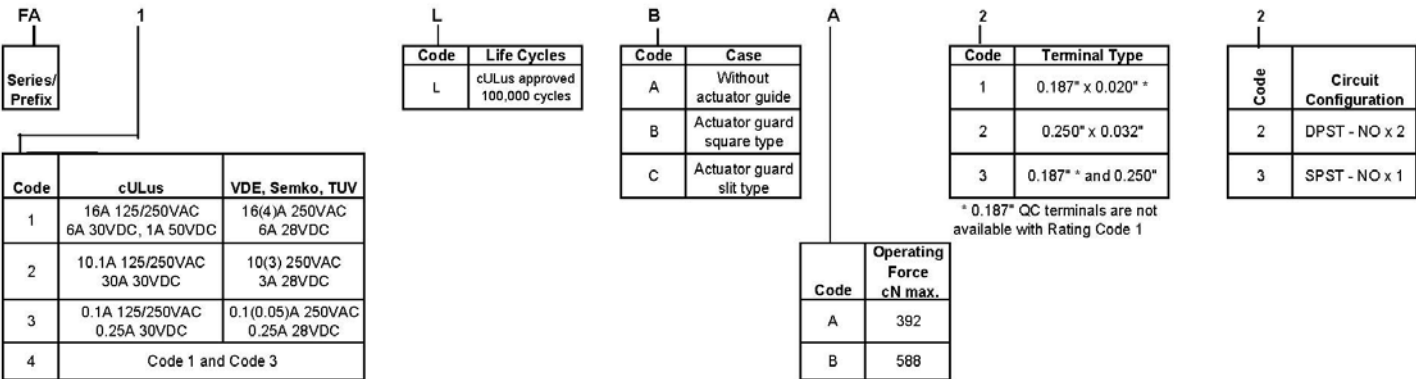
Specifications subject to change without notice

Operating Characteristics

| Switch Type | | Operate Force Max cN | Operate Point mm | Overtravel Min. mm | Total Travel Force Max cN | Rest Position* mm |
|-------------|---|-------------------------|---------------------|-----------------------|---------------------------------|-------------------------|
| FA | <input type="checkbox"/> <input type="checkbox"/> -AA <input type="checkbox"/> <input type="checkbox"/> | 392 | 7.2 +/- 0.5 | 4.3 | 686 | 9.6 +/- 0.5 |
| FA | <input type="checkbox"/> <input type="checkbox"/> -AB <input type="checkbox"/> <input type="checkbox"/> | 588 | 7.2 +/- 0.5 | 4.3 | 981 | 9.6 +/- 0.5 |

* Measured from Datum Line. Refer to dimensional drawing.

Ordering Information



Contact

Call, fax or visit our
Website for more information.

ZF Electronics Corporation
11200 88th Avenue
Pleasant Prairie, WI 53158

Phone: 262.942.6500
Web: www.cherrycorp.com
Email: cep_sales@zf.com
Fax: 262.942.6566

The manufacturer accepts no liability for
errors or non-availability, and reserves the
right to change specifications without prior
notice.

Technical data relates to product
specifications only. Features may differ
from those described. Only drawings
combined with product specifications shall
be deemed binding.

© 2007 ZF Electronic Systems Pleasant
Prairie, LLC

Last Updated: 03/21/13



Mouser Electronics

Authorized Distributor

Click to View Pricing, Inventory, Delivery & Lifecycle Information:

[Cherry Electrical:](#)

[FA1LCB22](#)