

Dieses Dokument ist urheberrechtlich geschützt • This document is protected by copyright • Rosenberger Hochfrequenztechnik GmbH & Co. KG  
RF\_35/09.14/6.2

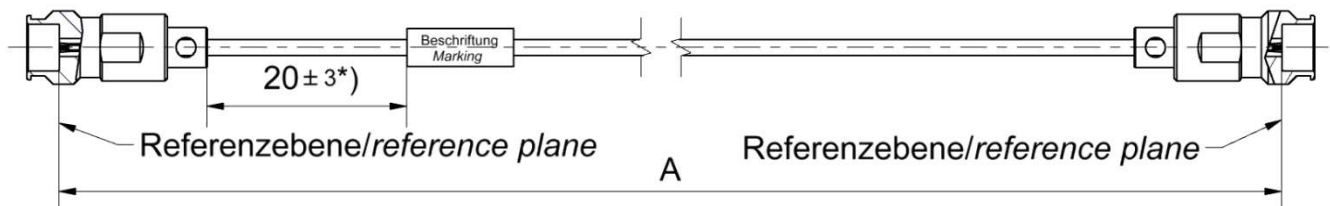
## Technical Data Sheet

# Rosenberger

### Cable assembly

RPC-1.35 Jack – UT-047-LL – RPC-1.35 Jack

## L70-420-XXX



All dimensions are in mm; tolerances:  $\pm 3$  mm for  $A \leq 300$  mm;  $\pm 1\%$  for  $A > 300$  mm

\*) If length "A"  $\leq 90$  mm marking is mount centric  $\pm 5$  mm

### Available variants

| Type        | max. Insertion loss  | Marking                                | Weight (g) / pce  |
|-------------|--|--|---|
| L70-420-XXX | $\leq 0.0017 * \sqrt{f[\text{GHz}]} \frac{\text{dB}}{\text{mm}}$ | ROSENBERGER YYYW-<br>L70-420-XXX sssss | $0.0059 \frac{\text{g}}{\text{mm}} * A[\text{mm}] + 2.60\text{g}$ |

XXX – length in mm = A      Maximum possible length = 6000mm  
WW – week      YYYY – year      sssss – serial no.

Note:      Weight:

First constant = Cable weight per mm; Second Constant = Connector left and Connector right weight per pce

### Assembly parts

|                 |               |
|-----------------|---------------|
| Connector left  | RPC-1.35 Jack |
| Connector right | RPC-1.35 Jack |
| Cable           | UT-047-LL     |
| Armour          | none          |

### Electrical data

|                             |                              |
|-----------------------------|------------------------------|
| Impedance                   | 50 $\Omega$                  |
| Frequency                   | DC to 90 GHz                 |
| Return loss <sup>1</sup>    | $\geq 17$ dB, DC to 50 GHz   |
|                             | $\geq 14$ dB, 50 to 90 GHz   |
| Insertion loss <sup>1</sup> | see table available variants |

Individual testing and documentation:

Measurement plot with all 4 S – Parameters (S11; S22; S21; S12) is included with the cable assembly and on the backside the care and handling instruction is printed.

<sup>1</sup> Return Loss and Insertion Loss includes the measurement adaptor

### Mechanical data

|                      |         |
|----------------------|---------|
| Minimum bend radius: |         |
| Single               | 20.0 mm |

### Environmental data

|                   |                    |
|-------------------|--------------------|
| Temperature range | - 40 °C to +125 °C |
| RoHS              | compliant          |

While the information has been carefully compiled to the best of our knowledge, nothing is intended as representation or warranty on our part and no statement herein shall be construed as recommendation to infringe existing patents. In the effort to improve our products, we reserve the right to make changes judged to be necessary.

|                |          |               |          |      |                           |                |          |
|----------------|----------|---------------|----------|------|---------------------------|----------------|----------|
| Draft          | Date     | Approved      | Date     | Rev. | Engineering change number | Name           | Date     |
| Marcel Panicke | 08.11.19 | Markus Müller | 05.12.19 | a00  | 19-s271                   | Marcel Panicke | 05.12.19 |

Rosenberger Hochfrequenztechnik GmbH & Co. KG  
P.O.Box 1260 D-84526 Tittmoning Germany  
[www.rosenberger.de](http://www.rosenberger.de)

Tel. : +49 8684 18-0  
Email : [info@rosenberger.de](mailto:info@rosenberger.de)

Page

1 / 1

# Mouser Electronics

Authorized Distributor

Click to View Pricing, Inventory, Delivery & Lifecycle Information:

[Rosenberger:](#)

[L70-420-140](#)