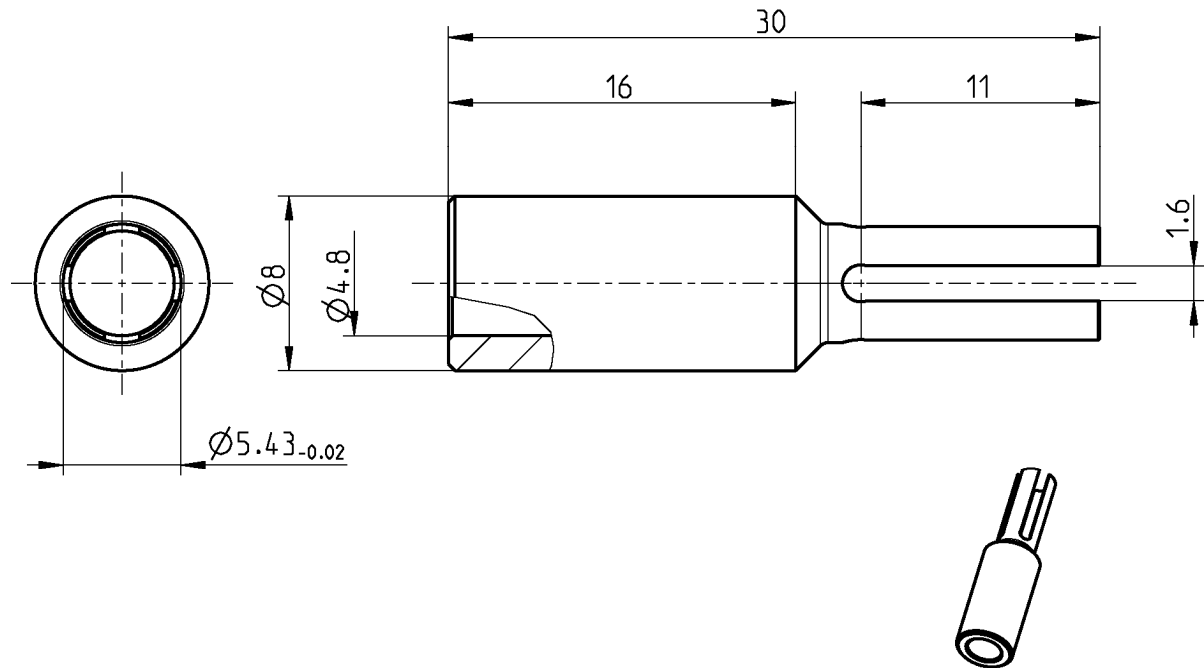


REPLACEMENT SLEEVE FOR
EXTRACTION TOOL**11W102-001**

All dimensions are in mm; tolerances according to ISO 2768 m-H

Application

Series For DIN 41626 inserts
Extraction tool 11W102-000
11W103-000

Material and plating**Connector parts**

Replacement sleeve

Material

Beryllium copper

Plating

Nickel, 2.5-5 µm

Weight

Weight

4.78 g/pce

While the information has been carefully compiled to the best of our knowledge, nothing is intended as representation or warranty on our part and no statement herein shall be construed as recommendation to infringe existing patents. In the effort to improve our products, we reserve the right to make changes judged to be necessary.

Draft	Date	Approved	Date	Rev.	Engineering change number	Name	Date
Rong Fang	04/07/05	Sa. Krautenbacher	13.03.14	b00	14-0352	T. Krojer	13.03.14
Rosenberger Hochfrequenztechnik GmbH & Co. KG P.O.Box 1260 D-84526 Tittmoning Germany www.rosenberger.de					Tel.: +49 8684 18-0 Fax: +49 8684 18-499 email: info@rosenberger.de		Page 1 / 1

Mouser Electronics

Authorized Distributor

Click to View Pricing, Inventory, Delivery & Lifecycle Information:

Rosenberger:

11W102-001