

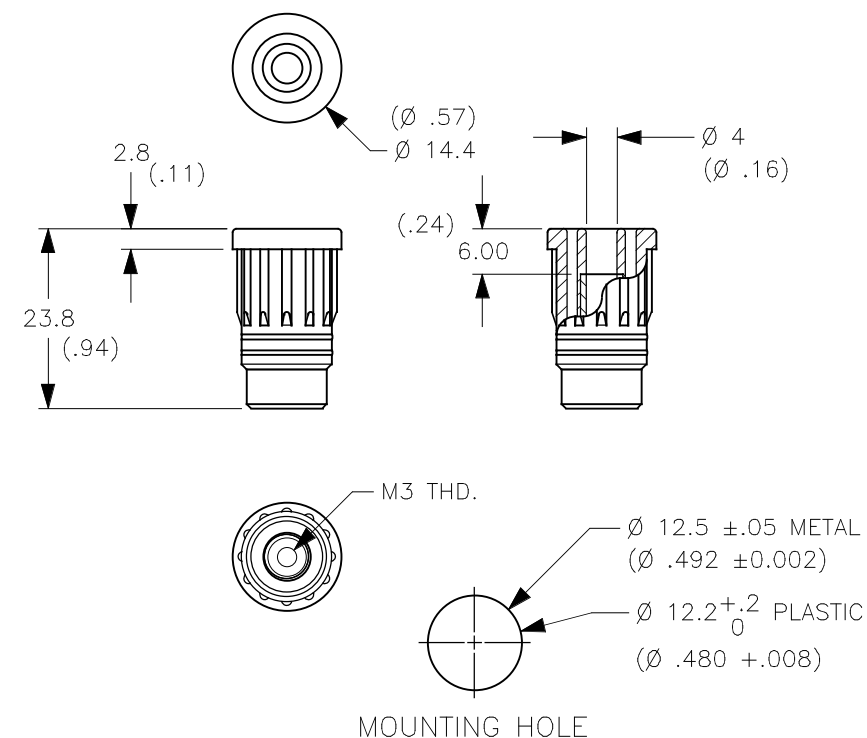
THIS IS ISSUED IN STRICT CONFIDENCE THAT IT IS NOT USED AS A BASIS FOR MANUFACTURE OR SALE AND THAT IT IS NOT COPIED, REPRINTED OR DISCLOSED TO A THIRD PARTY EITHER WHOLLY OR IN PART WITHOUT THE PRIOR WRITTEN CONSENT OF CAL TEST ELECTRONICS, INC.

- PUSH-IN 4 mm SAFETY BANANA JACK w/M3 THREADED HOLE.
- SPECIFICATIONS:
INSULATOR: POLYAMIDE (NYLON)
CONTACT: BRASS, NICKEL PLATED
- RATING:
VOLTAGE: 1,000 V CAT III/600 V CAT IV P2 (IEC 61010-031)
CURRENT: 36 A MAX.
RESISTANCE: <5 mohm.
TEMPERATURE: -20°C TO +80°C.
- MOUNTING HOLE: REF. DIAGRAM.
- SUGGESTED PANEL THICKNESS FOR PRESS-FIT SUPPORT:
PLASTIC: >2 mm (0.080")
METAL: >1.5 mm (0.062")

PART NUMBER

CT2914-#

COLOR: 0 - BLACK
1 - BROWN
2 - RED
3 - ORANGE (SPECIAL)
4 - YELLOW
5 - GREEN
6 - BLUE
7 - VIOLET
8 - GRAY
9 - WHITE



MOUNTING HOLE

METRIC

UNLESS OTHERWISE SPECIFIED
DIMENSIONS ARE IN MILLIMETERS
TOLERANCES ARE:
DECIMALS ANGLE
.X ± 0.8 ± 2°
.XX ± 0.25
DO NOT SCALE DRAWING

MATERIAL

FINISH

CONTRACT NO.

APPROVALS

DATE

DRAWN WDH

7/12/99

CHECKED

ENGR.

DESIGN ACTIVITY

Cal Test Electronics

22820 Savi Ranch Parkway
Yorba Linda, CA 92887-4610

TITLE

**4 mm PUSH-IN SAFETY JACK,
w/M3 THREADED HOLE**

SIZE
A

CAGE CODE
43F45

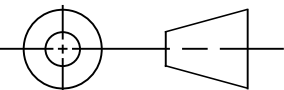
DWG. NO.

P291400

REV.
B

SCALE 1:1

SHEET 1 OF 1



Mouser Electronics

Authorized Distributor

Click to View Pricing, Inventory, Delivery & Lifecycle Information:

Cal Test Electronics:

[CT2914-2](#) [CT2914-5](#) [CT2914-9](#) [CT2914-4](#) [CT2914-0](#) [CT2914-1](#) [CT2914-8](#) [CT2914-7](#) [CT2914-6](#)