

D

C

B

A

3

3

2

2

1

1

THIS IS ISSUED IN STRICT CONFIDENCE THAT IT IS NOT USED AS A BASIS FOR MANUFACTURE OR SALE AND THAT IT IS NOT COPIED, REPRINTED OR DISCLOSED TO A THIRD PARTY EITHER WHOLLY OR IN PART WITHOUT THE PRIOR WIRTTEN CONSENT OF CAL TEST ELECTRONICS, INC.

NOTES:

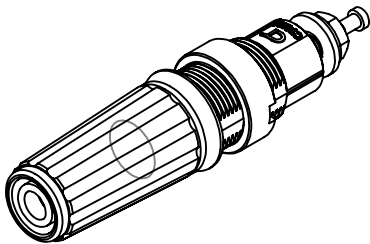
1. MATERIAL:
BODY, CAP & INNER INSULATOR: NYLON 6.6 (PA), UL94-1,
COLORS: BODY & INNER INSULATOR, GREY; CAP, PER PART
NUMBER.
CONTACT, PANEL NUT & ACCESSORIES: BRASS, C360,
NICKEL PLATED.
2. SPECIFICATIONS:
VOLTAGE: 600 V *NRMCM, PER IEC/EN 61010-1. (*NO RATED
MASURMENT CATEGORY)
CURRENT: 36 A MAX.
OPERATING TEMPERATURE: 0°C TO +60°C
3. CROSS-HOLE ALIGNED ±3° PERPEDICULAR TO MOUNTING
FLATS.
4. MAXIMUM PANEL THICKNESS: 9 mm.
5. MAXIMUM TIGHTENING TORQUE ON M12 PANEL NUT: 2.3 N.m
(1.70 FT-LBF).
6. RECOMMENDED ASSEMBLY TOOL: CT2246A.
7. HARDWARE INCLUDED (1 EACH):

1 PANEL NUT (CT2830)

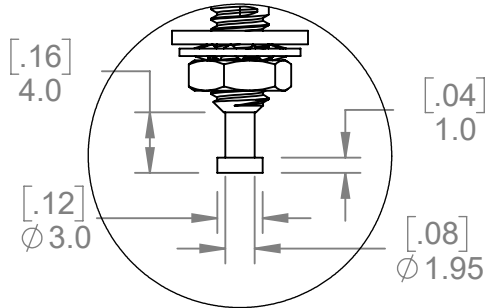
2 M4 FLAT WASHER

3 M4 LOCK WASHER

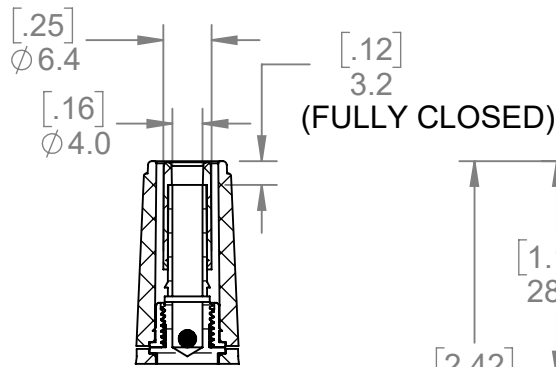
4 M4 NUT
8. ROHS 2 COMPLIANT; EXEMPTION ANNEX III 6(C)
9. WEIGHT: 18.3 GRAMS



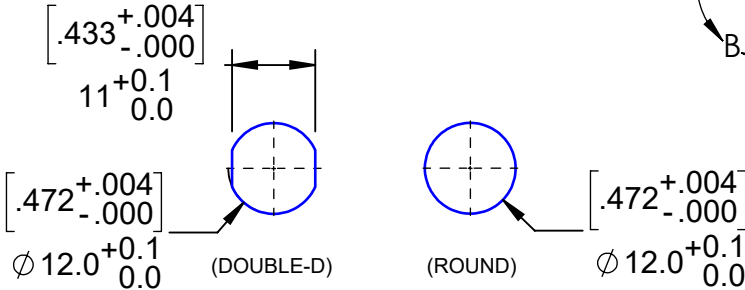
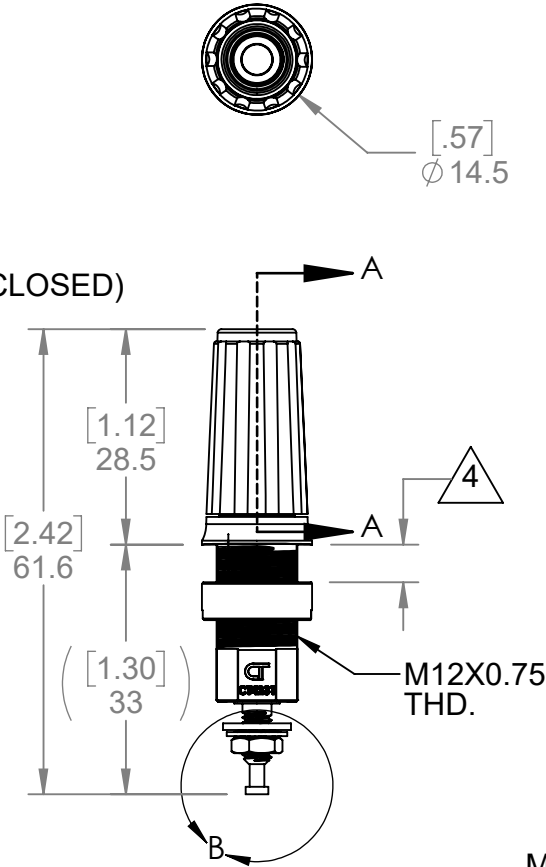
ISOMETRIC VIEW



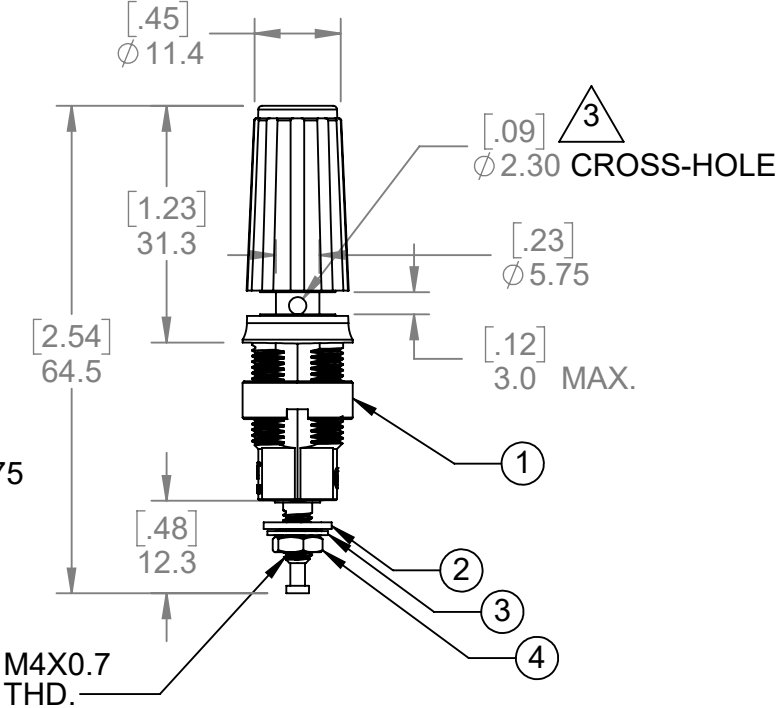
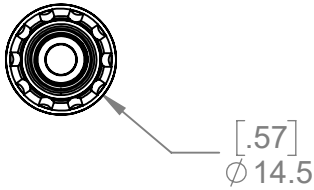
DETAIL B
SCALE 2 : 1
(SOLDER TURRET)



SECTION A-A



MOUNTING HOLES



CT4231-NI-5	NICKEL PLATED	GREEN
CT4231-NI-2	NICKEL PLATED	RED
CT4231-NI-0	NICKEL PLATED	BLACK
PART NUMBER	CONFIGURATION / PLATING	CAP COLOR

PART NUMBER TABLE

METRIC	UNLESS OTHERWISE SPECIFIED DIMENSIONS ARE IN MILLIMETERS TOLERANCES ARE: PER DIN ISO 2768m		PROJECT NO. C368		Cal Test Electronics 22820 Savi Ranch Parkway Yorba Linda, CA 92887			
	DO NOT SCALE DRAWING		APPROVALS	DATE	TITLE 4 mm SAFETY BINDING POST, PANEL MOUNT			
	MATERIAL SEE NOTES		DRAWN WDH	5/1/2019				
	TREATMENT		CHECKER T.Schmidt	5/14/2019				
THIRD ANGLE PROJECTION	FINISH SEE NOTES		ENGR. B.Hansen	5/14/2019	SIZE B	CAGE CODE 43F45	DWG. NO. P423100	REV. A
	SCALE 1:1		SHEET 1 OF 1					

Mouser Electronics

Authorized Distributor

Click to View Pricing, Inventory, Delivery & Lifecycle Information:

[Cal Test Electronics:](#)

[CT4231-NI-5](#) [CT4231-NI-0](#) [CT4231-NI-2](#)