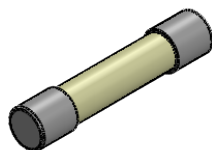


THIS IS ISSUED IN STRICT CONFIDENCE  
THAT IT IS NOT USED AS A BASIS FOR  
MANUFACTURE OR SALE AND THAT IT IS  
NOT COPIED, REPRINTED OR  
DISCLOSED TO A THIRD PARTY EITHER  
WHOLLY OR IN PART WITHOUT THE  
PRIOR WRITTEN CONSENT OF CAL TEST  
ELECTRONICS, INC.

#### NOTES:

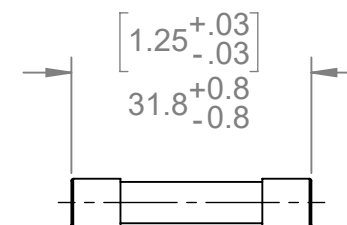
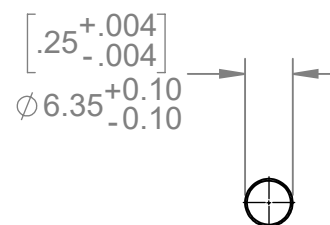
1. MATERIAL:  
TUBE BODY: CERAMIC (NON-TRANSPARENT)  
CAP: BRASS, NICKEL PLATED  
ELEMENT: METAL WIRE  
FILLER: QUARTZ SAND
2. SPECIFICATIONS:  
RATED VOLTAGE: 1,000 V AC / DC  
RATED CURRENT: SEE PART NUMBER TABLE  
FUSING TIME LIMIT:  
4 In: 60 ms MAX.  
10 In: 6 ms MAX.  
BREAKING CAPACITY: 50 kA MIN.  
OPERATING TEMPERATURE: -55°C TO +125°C
3. UL AND / OR TUV RECOGNIZED
4. RoHS 2 COMPLIANT; EXEMPTION ANNEX III 6(c)
5. WEIGHT:  
INDIVIDUAL: 1.2 g/pc



ISOMETRIC VIEW

#### REVISIONS

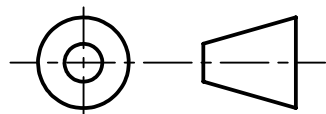
REV.	DESCRIPTION	DATE	APPROVED
-	CLASS A RELEASED	3/14/18	
A	REVISED NOTE 2. BREAKING CAPACITY WAS 10 KA MIN. CONVERTED TO SW FORMAT	1/17/2019	
B	ADDED 2.0 A FUSE TO MODEL NUMBER TABLE	7/18/2019	



CT4049-2.0A	2.0 A	-
CT4049-1.5A	1.5 A	-
CT4049-1.0A	1.0 A	-
CT4049-0.5A	0.5 A	-
MODEL NUMBER	CURRENT RATING	NOTES / REFERENCE
MODEL NUMBER TABLE		

# METRIC

THIRD ANGLE PROJECTION



UNLESS OTHERWISE  
SPECIFIED DIMENSIONS  
ARE IN MILLIMETERS  
TOLERANCES ARE:  
PER DIN ISO 2768m

DO NOT SCALE DRAWING

MATERIAL  
SEE NOTES

TREATMENT  
NONE

FINISH  
NONE

PROJECT NO.

C306

APPROVALS

DATE

DRAWN  
WDH

3/14/2018

CHECKER  
B.Hansen

3/14/2018

ENGR.

DESIGN ACTIVITY

TITLE

**Cal Test Electronics** 22820 Savi Ranch Parkway  
Yorba Linda, CA 92887

**FUSE, MINATURE, CERAMIC, 6X32,  
1000 V, VERY FAST-ACTING**

SIZE

**A**

CAGE CODE

**43F45**

DWG. NO.

**P404900**

REV.

**B**

SCALE 1:1

SHEET 1 OF 1

# Mouser Electronics

Authorized Distributor

Click to View Pricing, Inventory, Delivery & Lifecycle Information:

[Cal Test Electronics:](#)

[CT4049A-0.5A](#) [CT4049A-1.0A](#) [CT4049A-1.5A](#) [CT4049A-2.0A](#)