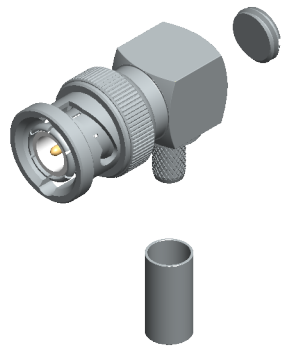
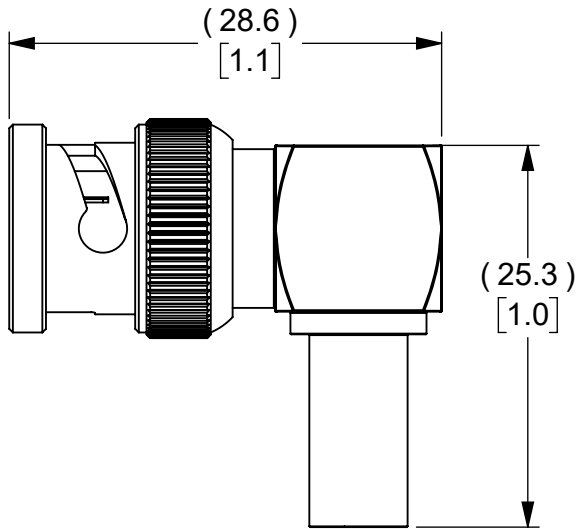
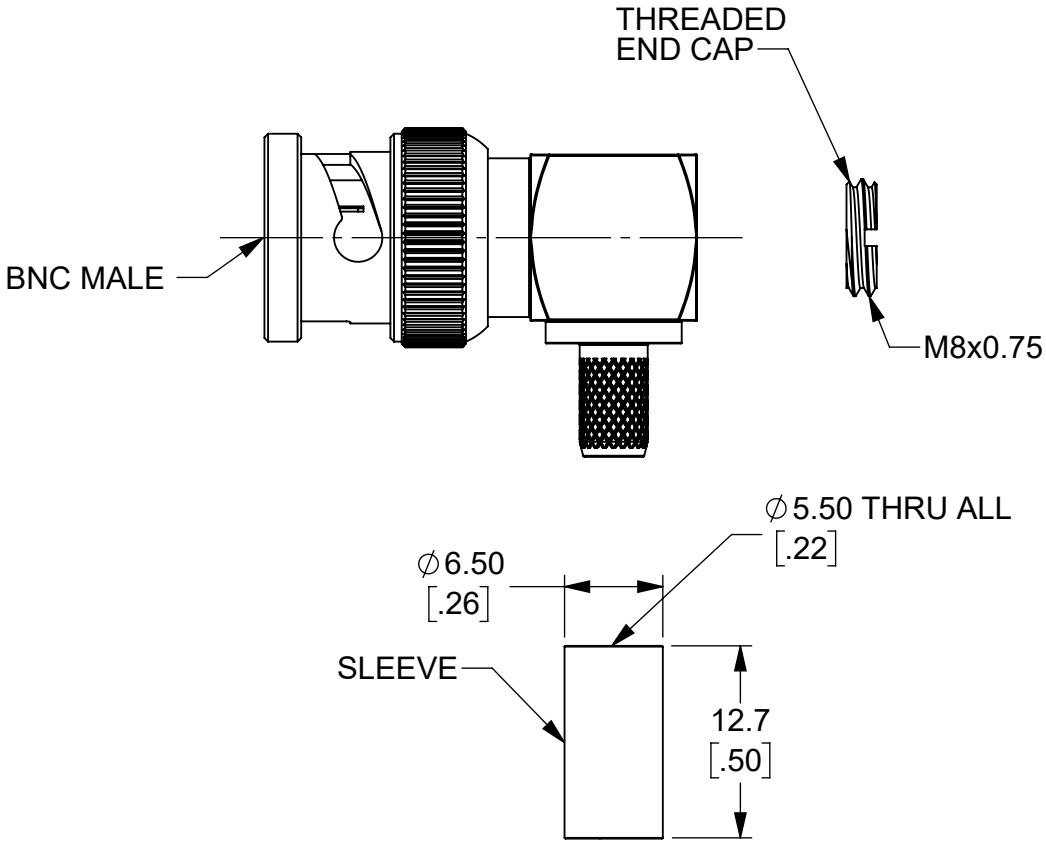


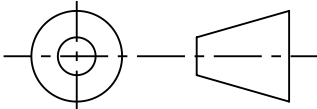
THIS IS ISSUED IN STRICT CONFIDENCE THAT IT IS NOT USED AS A BASIS FOR MANUFACTURE OR SALE AND THAT IT IS NOT COPIED, REPRINTED OR DISCLOSED TO A THIRD PARTY EITHER WHOLLY OR IN PART WITHOUT THE PRIOR WRITTEN CONSENT OF CAL TEST ELECTRONICS, INC.

REVISIONS			
REV.	DESCRIPTION	DATE	APPROVED
A	INITIAL RELEASE	11/15/2023	B. Hansen

- NOTES:
- ALL SPECIFICATIONS SUBJECT TO CHANGE WITHOUT NOTICE.
 - ADAPTER TO MEET OR EXCEED ALL SPECIFICATIONS PER MIL-PRF-39012.
 - MATING DIMENSIONS IN ACCORDANCE WITH MIL-STD-348.
 - FREQUENCY RANGE SPECIFICATIONS ARE FOR REFERENCE AND ARE DEPENDENT ON CABLE TYPE AND OTHER APPLICATION SPECIFIC CONDITIONS.
 - MATERIAL:
 - BODY: BRASS, NICKEL PLATED
 - CENTER CONTACT: BRASS, GOLD PLATED
 - SLEEVE: BRASS, NICKEL PLATED
 - THREADED END CAP: BRASS, NICKEL PLATED
 - PLATED DIELECTRIC: DELRIN
 - ELECTRICAL:
 - IMPEDANCE: 50Ω
 - FREQUENCY: DC - 2 GHz
 - WORKING VOLTAGE: 500 Vrms
 - CABLE TYPE:
 - THE CT4508 IS INTENDED TO BE USED WITH THE FOLLOWING TYPES OF:
 - CABLE: RG-58
 - ASSEMBLY INSTRUCTIONS ON SHEET 2 OF 2.
 - MECHANICAL:
 - TEMPERATURE RANGE: -20°C TO +80°C
 - RoHS AND REACH COMPLIANT



ISOMETRIC VIEW
FULL SCALE

		CT4508		RIGHT-ANGLE CONNECTOR, CRIMP		IN-SERIES CONNECTOR									
		MODEL NUMBER		CONFIGURATION			NOTES / REFERENCE								
		MODEL NUMBER TABLE													
THIRD ANGLE PROJECTION		UNLESS OTHERWISE SPECIFIED DIMENSIONS ARE IN MILLIMETERS TOLERANCES ARE: X.X = ±0.5 X.X* = ±0.5* X.XX = ±0.25 X.XXX = ±0.125 DO NOT SCALE DRAWING		PROJECT NO.		METRIC		<div>Cal TestELECTRONICS</div> 22820 Savi Ranch Prky. Yorba Linda, CA 92887 USA							
				APPROVALS		DATE		TITLE CONNECTOR, BNC MALE 90 DEGREE, DIY CRIMP							
				DRAWN GSG		11/1/2023									
				CHECKER B. HANSEN		11/1/2023									
REFERENCE		TREATMENT NONE		ENGR. B. HANSEN		11/1/2023		SIZE B		CAGE CODE 43F45		DWG. NO. CT4508		REV. A	
		FINISH SEE NOTES		DESIGN ACTIVITY				SCALE 2:1				SHEET 1 OF 2			

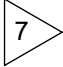
22820 Savi Ranch Prky.
Yorba Linda, CA 92887
USA

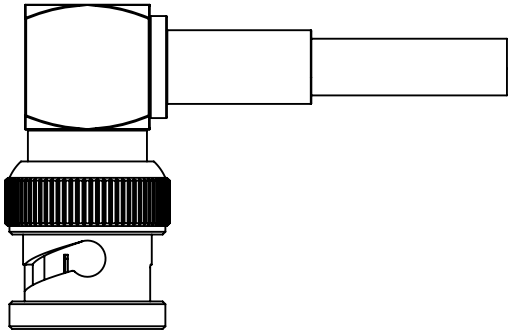
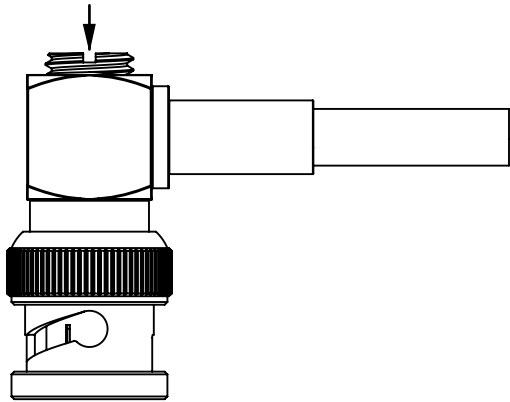
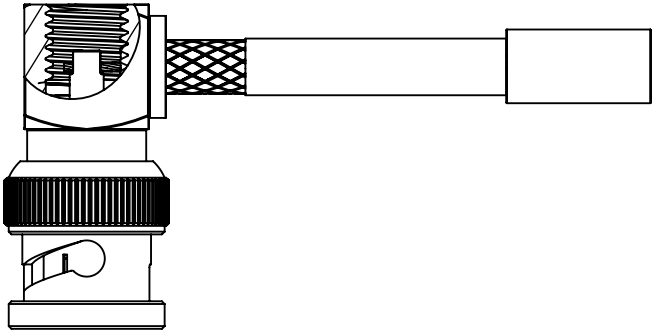
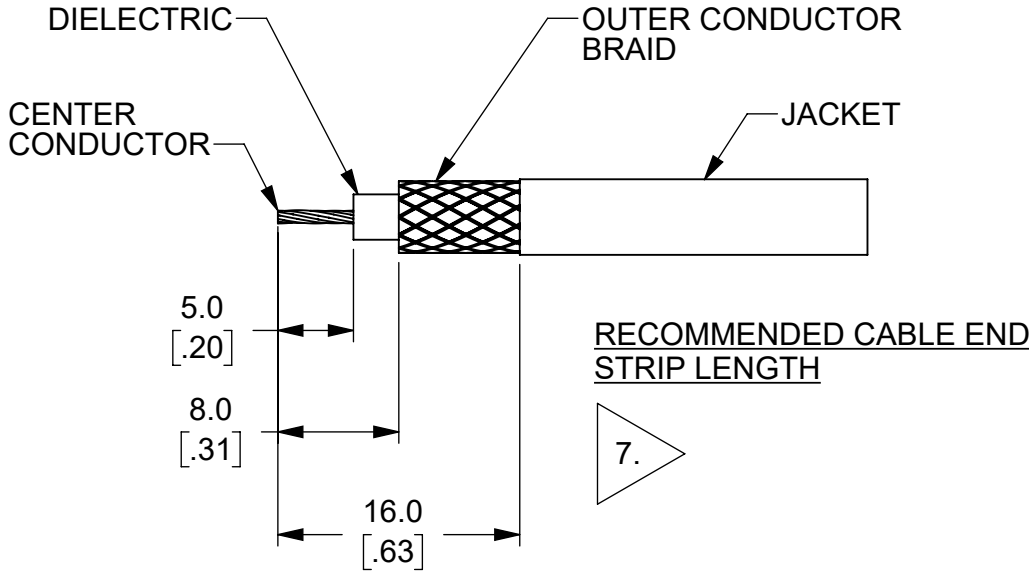


METRIC

THIS IS ISSUED IN STRICT CONFIDENCE
THAT IT IS NOT USED AS A BASIS FOR
MANUFACTURE OR SALE AND THAT IT IS
NOT COPIED, REPRINTED OR
DISCLOSED TO A THIRD PARTY EITHER
WHOLLY OR IN PART WITHOUT THE
PRIOR WRITTEN CONSENT OF CAL TEST
ELECTRONICS, INC.

ASSEMBLY INSTRUCTIONS:

1. SLIDE CRIMP SLEEVE OVER CABLE JACKET
2. STRIP COAXIAL CABLE END 
3. FLARE OUTER CONDUCTOR BRAID
4. INSERT CABLE INTO BNC CONNECTOR SO THE CENTER CONDUCTOR SITS IN THE SLOTTED AREA OF THE CENTER PIN
5. SOLDER CABLE CENTER CONDUCTOR TO BNC CENTER PIN
6. INSERT END CAP AND ENGAGE THREADS
7. TIGHTEN END CAP UNTIL SECURE
8. ENSURE THE OUTER CONDUCTOR BRAID SEATS PROPERLY AND UNIFORMLY AROUND THE OUTER SURFACE OF THE BNC CRIMP POST
9. CRIMP SLEEVE TO BNC CRIMP POST USING THE APPROPRIATE CRIMP TOOL



METRIC	APPROVALS		DATE	SIZE	CAGE CODE	DWG. NO.	CT4508	REV.
	DRAWN	GSG	11/1/2023	B	43F45			A
	CHECKER	B. HANSEN	11/1/2023	SCALE	2:1		SHEET 2 OF 2	

Mouser Electronics

Authorized Distributor

Click to View Pricing, Inventory, Delivery & Lifecycle Information:

[Cal Test Electronics:](#)

[CT4508](#)