

THIS IS ISSUED IN STRICT CONFIDENCE THAT IT IS NOT USED AS A BASIS FOR MANUFACTURE OR SALE AND THAT IT IS NOT COPIED, REPRINTED OR DISCLOSED TO A THIRD PARTY EITHER WHOLLY OR IN PART WITHOUT THE PRIOR WRITTEN CONSENT OF CAL TEST ELECTRONICS, INC.

NOTES:

- DO-IT-YOURSELF (DIY) \varnothing 4mm SHEATHED BANANA PLUGS
 - SHEET 2: NON-SOLDER VERSION.
 - SHEET 3: SOLDER VERSION.
 - SHEET 4: ASSEMBLY INSTRUCTIONS - NON-SOLDER VERSION.
 - SHEET 5: ASSEMBLY INSTRUCTIONS - SOLDER VERSION.
- SPECIFICATIONS:
 - BODY, TAIL, & TIP: POLYPROPYLENE (PP).
 - PLUG BODY: BRASS, NICKEL PLATED.
 - CONTACT SPRING: BeCu, NICKEL PLATED.
 - SET-SCREW: STEEL, BLACK OXIDE.
- RATING:
 - VOLTAGE: *1,000 V CAT III P2.
 - CURRENT: *36 A MAX.
 - *NOTE: WHEN ASSEMBLED WITH APPROPRIATE RATED TEST LEAD WIRE.
 - TEMPERATURE: 0°C TO +60°C.
- MAXIMUM TEST LEAD WIRE:
 - CONDUCTOR DIAMETER SIZES: \varnothing 2.5 mm (APPROX. 12 AWG).
 - INSULATION DIAMETER: \varnothing 4.0 mm.
 - STRIP LENGTH: 6.3 mm (0.25 IN).
- CE MARKED.
- RoHS COMPLIANT.

REVISIONS

REV.	DESCRIPTION	DATE	APPROVED
A	CLASS A RELEASED (ORIGINAL PRODUCT DRAWING WAS P298900 REV. B)	9/12/2023	B. Hansen

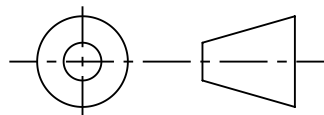
MODEL NUMBER

CT2989-#-#

COLOR: 0 - BLACK
2 - RED
4 - YELLOW
5 - GREEN
6 - BLUE
9 - WHITE

VERSION: -"none" (non-solder)
-S (solder)

THIRD ANGLE PROJECTION



UNLESS OTHERWISE SPECIFIED DIMENSIONS ARE IN MILLIMETERS
TOLERANCES ARE:

X.X = ± 0.5 X.X* = $\pm 0.5^*$
X.XX = ± 0.25
X.XXX = ± 0.125

DO NOT SCALE DRAWING

MATERIAL

SEE NOTES

REFERENCE



TREATMENT

FINISH

SEE NOTES

PROJECT NO.

N/A

APPROVALS

DATE

DRAWN

WDH

8/31/2023

CHECKER

ENGR.

B. Hansen

8/28/2023

DESIGN ACTIVITY

METRIC

Cal Test
ELECTRONICS

22820 Savi Ranch Pkwy.
Yorba Linda, CA 92887
USA

TITLE

4mm DIY SHEATHED BANANA PLUG

SIZE

A

CAGE CODE

43F45

DWG. NO.

CT2989

REV.

A

SCALE

1:1

SHEET

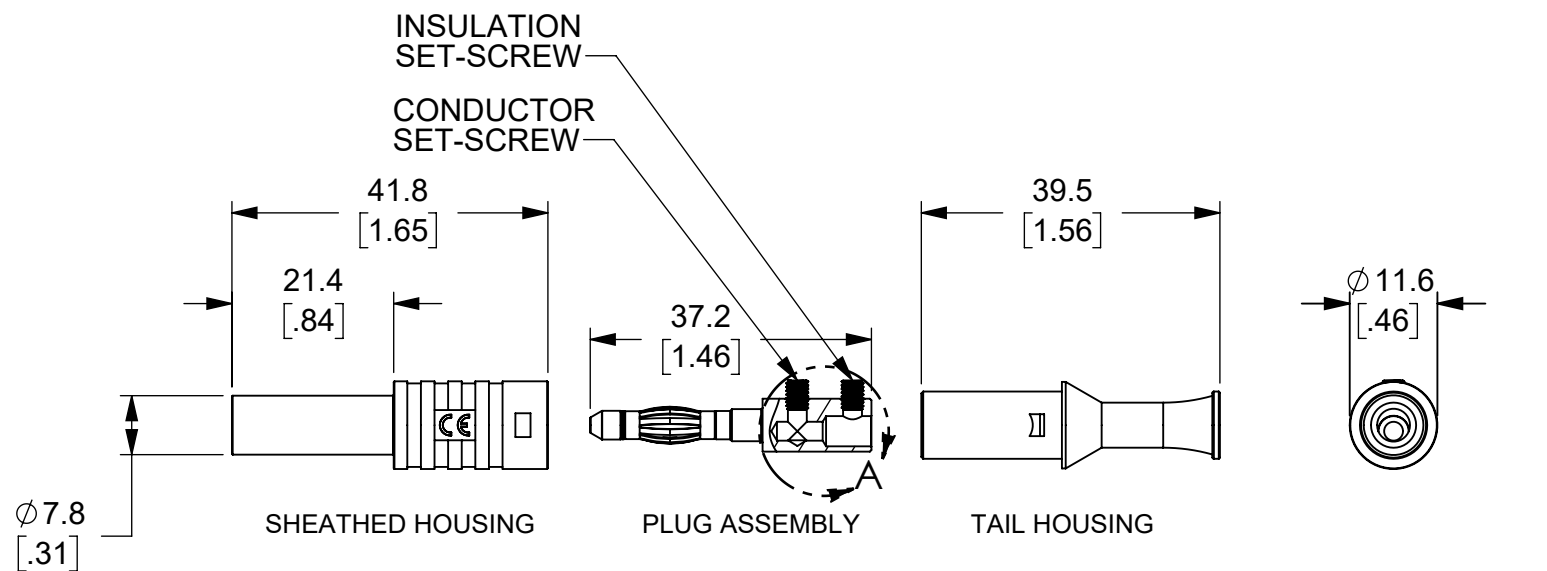
1 OF 5

2

1

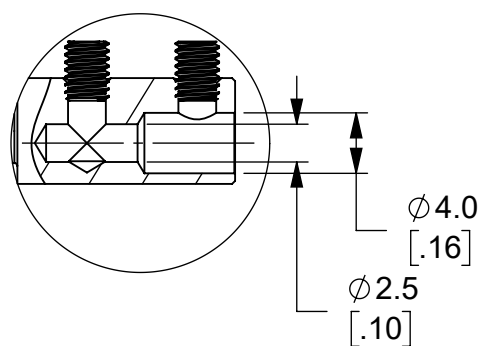
B

B

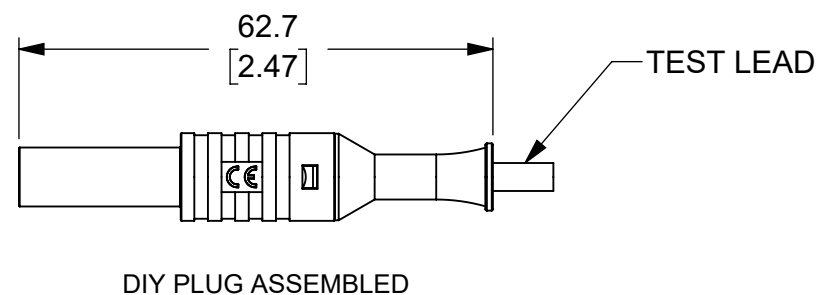


A

A



DETAIL A
SCALE 2 : 1



METRIC	APPROVALS	DATE	SIZE	CAGE CODE	DWG. NO.	REV.
	DRAWN WDH	8/31/2023	A	43F45	CT2989	A
	CHECKER		SCALE	1:1	SHEET	2 OF 5

2

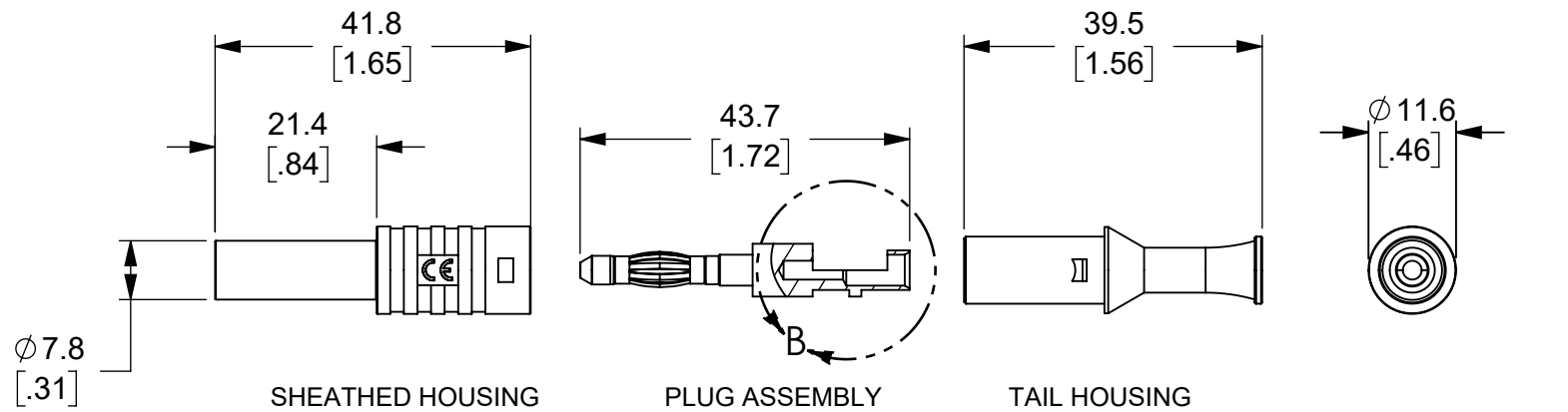
1

2

1

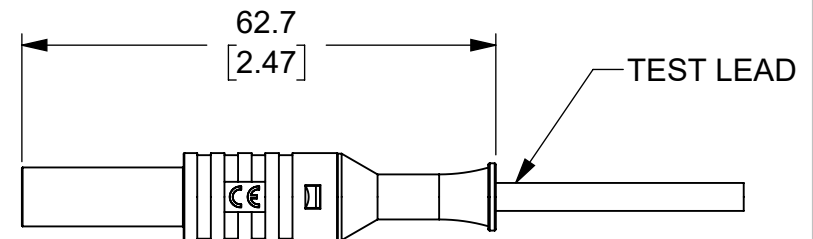
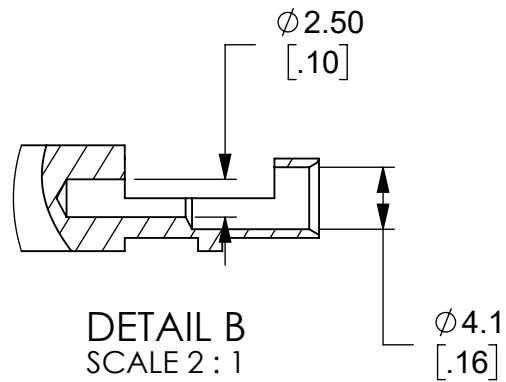
B

B



A

A



METRIC	APPROVALS		DATE	SIZE	CAGE CODE	DWG. NO.	REV.
	DRAWN	WDH	8/31/2023	A	43F45	CT2989	A
	CHECKER			SCALE	1:1	SHEET	3 OF 5

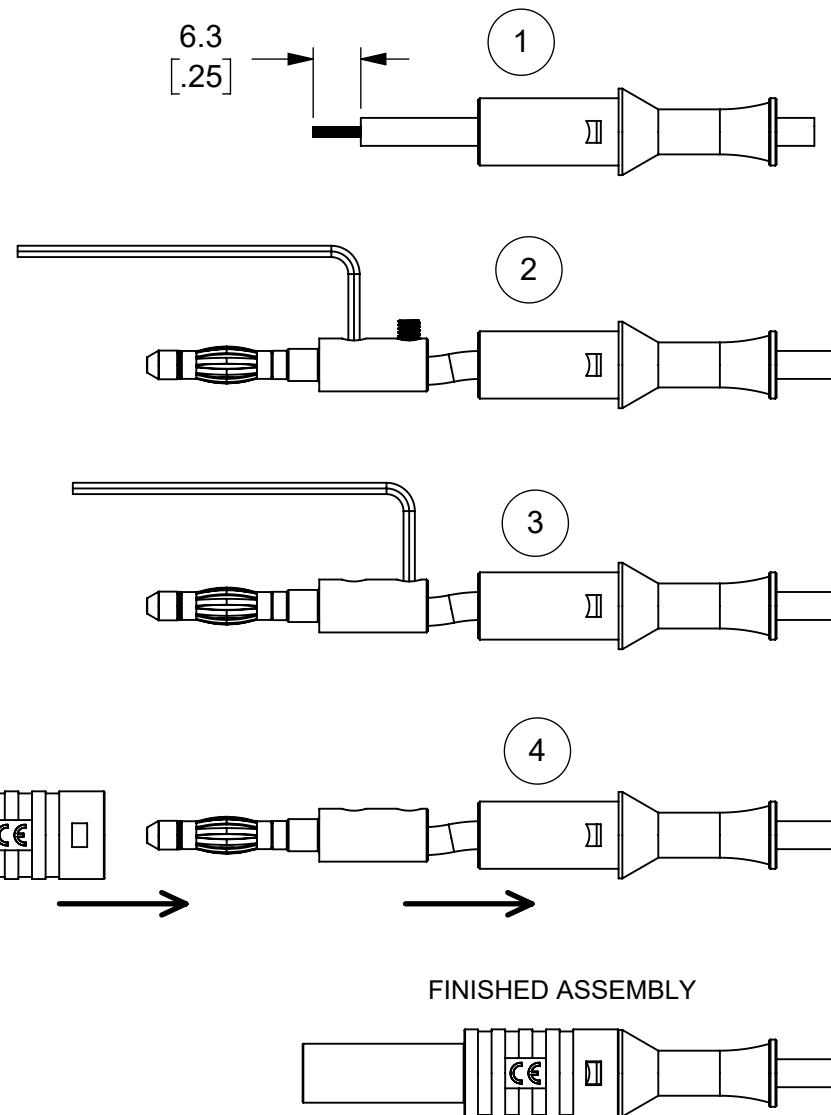
2

1

ASSEMBLY INSTRUCTIONS - NON-SOLDER:

NOTE: 1.5 mm HEX-WRENCH REQUIRED. (P/N: CT2919 AVAILABLE, NOT INCLUDED.)

- 1 SLIDE TEST LEAD THROUGH TAIL HOUSING AND STRIP JACKET 6.3 mm (0.25").
- 2 INSERT STRIPPED WIRE INTO THE PLUG ASSEMBLY AND TIGHTEN CONDUCTOR SET-SCREW.
 - TUG ON TEST LEAD TO CONFIRM CONNECTION.
- 3 SNUG INSULATION SET-SCREW ONTO TEST LEAD INSULATION.
- 4 SLIDE PLUG ASSEMBLY INTO TAIL HOUSING AND SNAP ON SHEATHED HOUSING



METRIC

APPROVALS

DRAWN WDH

CHECKER

DATE

8/31/2023

SIZE

A

SCALE

CAGE CODE

43F45

1:1

DWG. NO.

CT2989

REV.

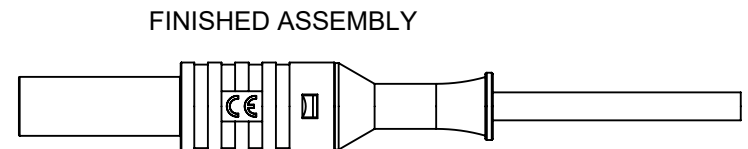
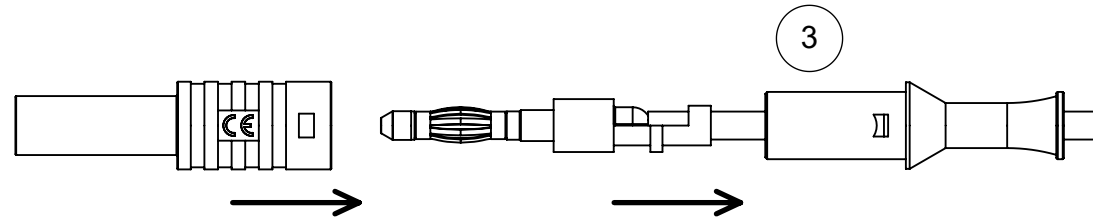
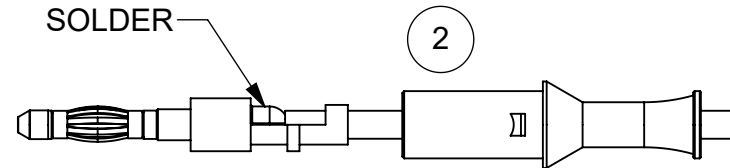
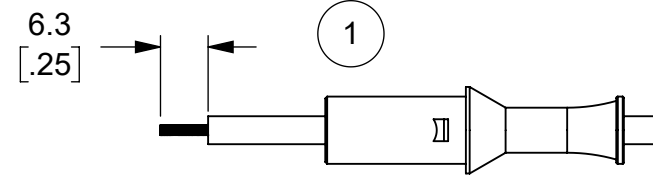
A

SHEET

4 OF 5

ASSEMBLY INSTRUCTIONS - SOLDER:

- 1 SLIDE TEST LEAD THROUGH THE TAIL HOUSING AND STRIP JACKET 6.3 mm (0.25").
- 2 INSERT STRIPPED WIRE INTO THE PLUG ASSEMBLY AND SOLDER.
- 3 SLIDE PLUG ASSEMBLY INTO THE TAIL HOUSING AND SNAP ON SHEATHED HOUSING.



FINISHED ASSEMBLY

METRIC

APPROVALS

DRAWN

WDH

DATE

8/31/2023

SIZE

A

CAGE CODE

43F45

DWG. NO.

CT2989

REV.

A

CHECKER

SCALE

1:1

SHEET

5 OF 5

Mouser Electronics

Authorized Distributor

Click to View Pricing, Inventory, Delivery & Lifecycle Information:

[Cal Test Electronics:](#)

[CT3134-S-2](#)