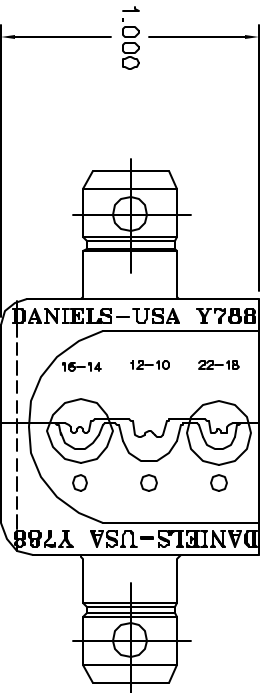
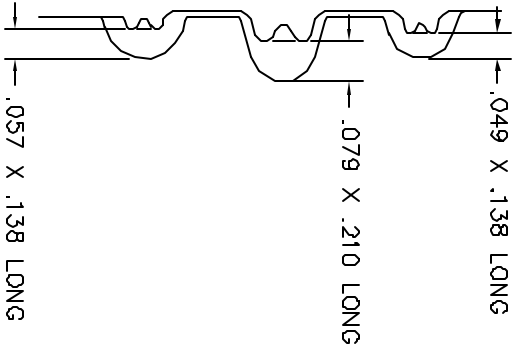
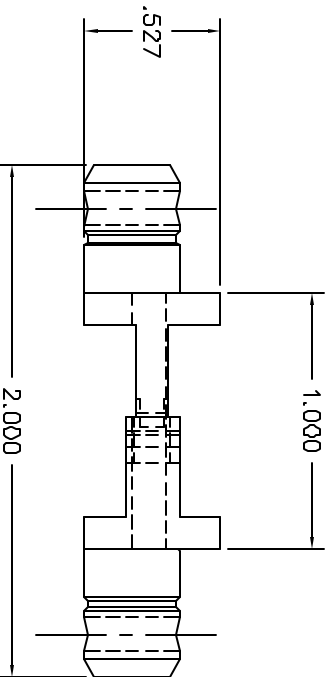



REVISIONS				
REV.	ECO.	DESCRIPTION	BY	APP'D
STAMP	NUMBER		DATE	DATE
1		ORIGINAL RELEASE	4/8/81	4/10/81



UNCONTROLLED DOCUMENT
WILL NOT BE UPDATED

1. DIE IS AMP EQUIVALENT #49935.
NOTES:

RESTRICTED & CONFIDENTIAL		MATERIAL		ITEM		PART NO.		QTY.		DESCRIPTION/REMARKS	
CONFIDENTIAL PROPERTY OF DANIELS MANUFACTURING CORP. NO PART, DRAWING OR OTHER INFORMATION TO BE DISCLOSED TO OTHERS, REPRODUCED OR USED FOR ANY OTHER PURPOSE, EXCEPT AS AUTHORIZED IN WRITING BY DANIELS MANUFACTURING. MUST BE RETURNED TO DANIELS MANUFACTURING CORP. ON COMPLETION OF ORDER OR CONTRACT, FORTRESS FOR WHICH INT.		HEAT TREAT FINISH		DRN.	DATE	CB	DATE	 DANIELS MANUFACTURING CORP. DAHLAND, FLORIDA CAGE 11887		DIE SET ENVELOPE DRAWING	
				CHD.	DATE	PD	DATE				
				APP'D	DATE	AAM	DATE				
				APP'D	DATE	JWV	DATE				
DO NOT SCALE DRAWING		FINISH		NOTE:		WHERE USED:		CAG P/N		SHEET OF	
				THIS DRAWING IS AN OUTLINE DRAWING OF THE RESPECTIVE DMC PART NUMBER. ACTUAL DMC PART NUMBER IS DRAWING NUMBER WITHOUT THE -ENV. SUFFIX.		B		Y788-ENV		1 OF 1	
						POSTING		DWC. NO. Y788-ENV		REV. 1	

Mouser Electronics

Authorized Distributor

Click to View Pricing, Inventory, Delivery & Lifecycle Information:

[Daniels Manufacturing:](#)

[Y788](#)