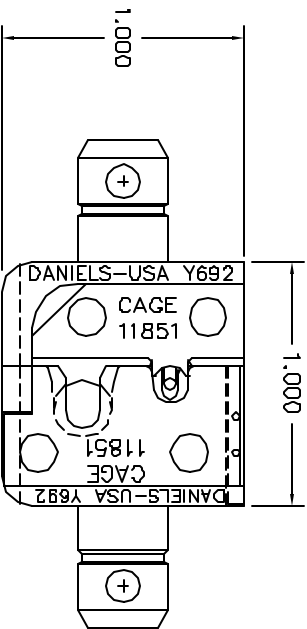
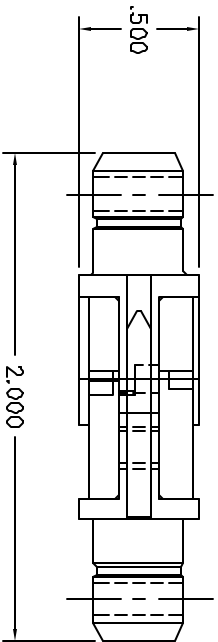
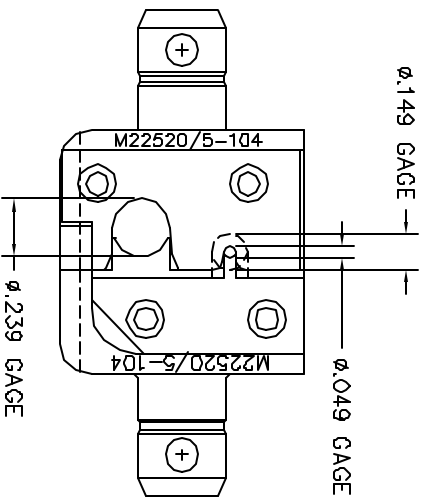


REVISIONS					
REV.	ECLA NUMBER	DESCRIPTION	BY DATE	APP'D DATE	DATE
1		ORIGINAL RELEASE	DVC 9/29/94	DE 9/94	



FRONT VIEW



BACK VIEW

UNCONTROLLED DOCUMENT  
WILL NOT BE UPDATED

RESTRICTED & CONFIDENTIAL					
CONFIDENTIAL PROPERTY OF DANIELS MANUFACTURING CORP. NOT TO BE REPRODUCED OR COPIED WITHOUT WRITTEN PERMISSION OF DANIELS MANUFACTURING CORP. EXCEPT AS AUTHORIZED IN WRITING BY DANIELS MANUFACTURING. MUST BE RETURNED TO DANIELS MANUFACTURING CORP. ON COMPLETION OF WORK. NO REUSE FOR WHICH IT WAS DESIGNED.					
MATERIAL		ITEM	PART NO.	QTY.	DESCRIPTION/REMARKS
HEAT TREAT		DRAWN DATE	DVC DATE	DATE	
FINISH		DATE	DATE	DATE	
NOTE: THIS DRAWING IS AN OUTLINE DRAWING OF THE RESPECTIVE DIE PART NUMBER. INDICATED ACTUAL DIM PART NUMBER WITHIN THE "ENV" SUFFIX.					
WHERE USED:					
B SIZE SCALE 2/1					
POSTING DIMS. NO. Y692-ENV					
B-SHEET 1 OF 1					
REV. 1					

DO NOT SCALE DRAWING

# Mouser Electronics

Authorized Distributor

Click to View Pricing, Inventory, Delivery & Lifecycle Information:

[Daniels Manufacturing:](#)

[Y692](#)