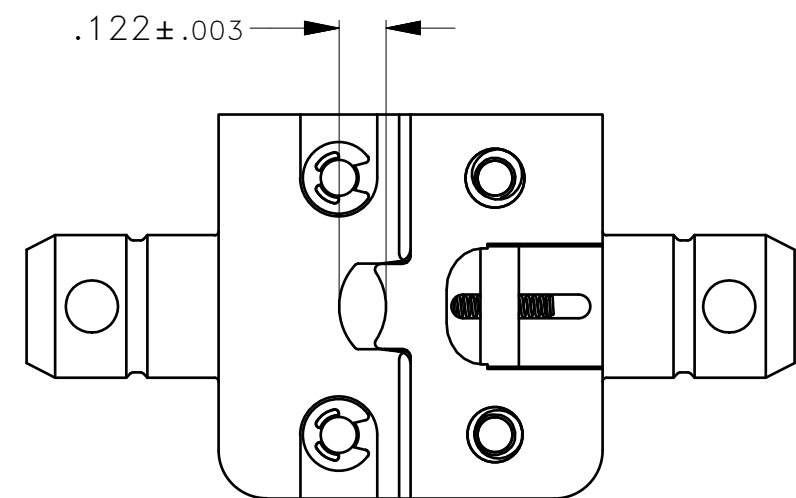
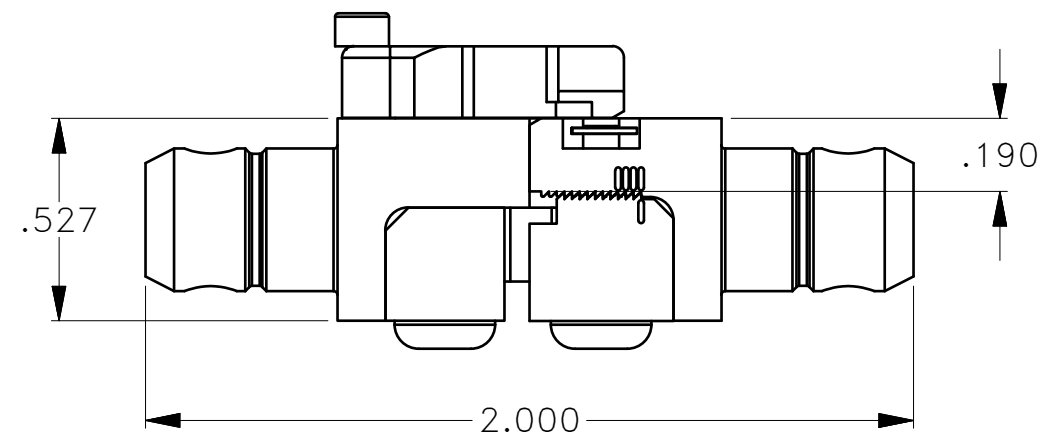
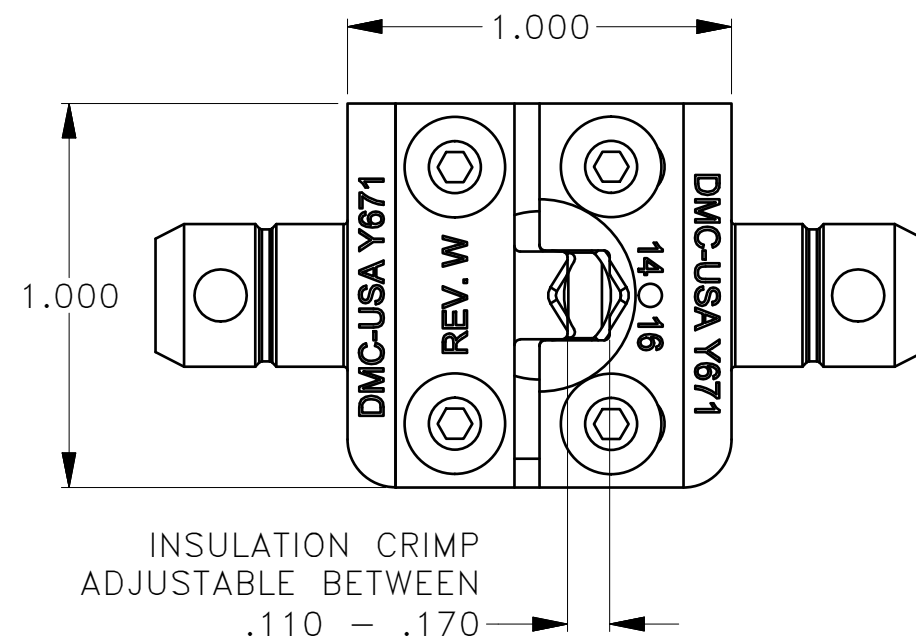


USERS MUST ASSURE THEY ARE USING THE CORRECT REVISION.

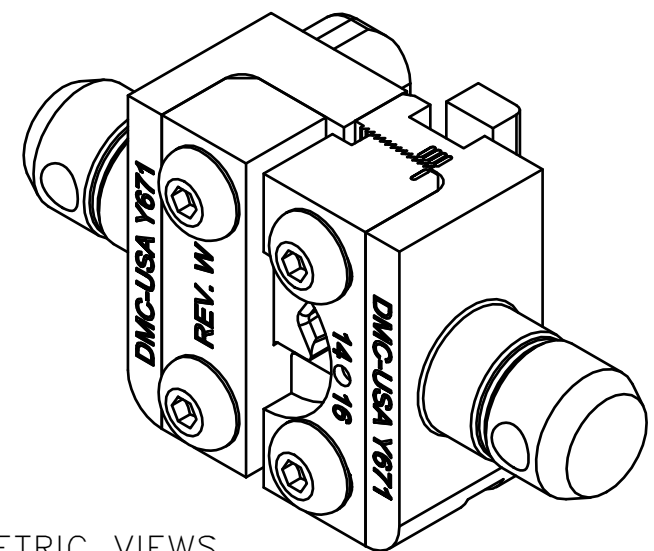
UNCONTROLLED DOCUMENT  
WILL NOT BE UPDATED  
DIMENSIONS IN INCHES - UNLESS OTHERWISE SPECIFIED



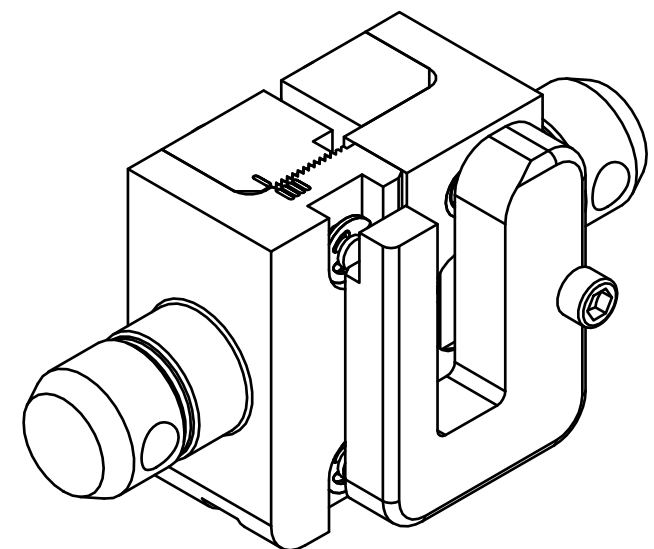
BACK VIEW  
LOCATOR REMOVED TO SHOW  
CONDUCTOR GAGING



INSULATION CRIMP  
ADJUSTABLE BETWEEN  
.110 - .170




ISOMETRIC VIEWS



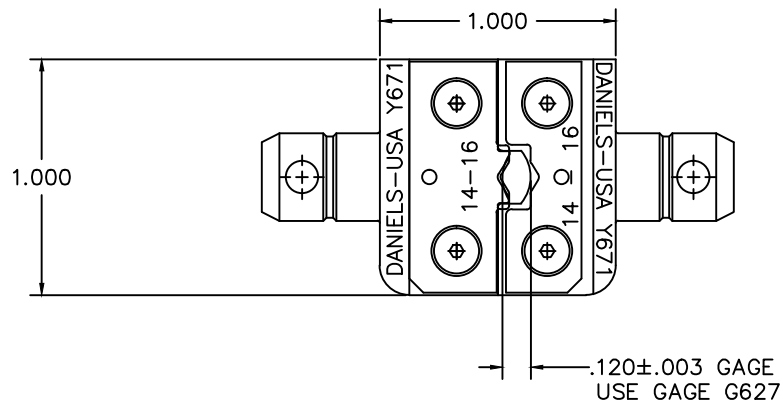
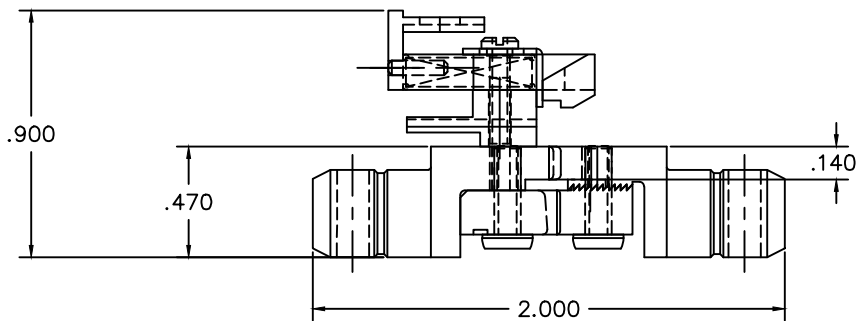
3. SEE PAGE 2 FOR OLDER REVISION GAGING INFORMATION  
2. CHECK CONDUCTOR GAGING WITH G768.  
1. FOR AS7928, MS17143, & MS25036 TERMINALS: BLUE INSULATED,  
14-16 AWG.

NOTES:

REVISIONS				
REV SYM	ECO NUMBER	DESCRIPTION	BY DATE	APP'D DATE
2		ADDED GAGE	TS 6.22.88	DH 6.22.88
3		UPDATED DRAWING TO NEW DESIGN	K. KOONS 8.15.13	
4		ADDED SHEET 2	ENF 1-12-16	RRR 1-12-16


<div>RESTRICTED &amp; CONFIDENTIAL</div> <div>CONFIDENTIAL PROPERTY OF DANIELS MANUFACTURING CORP. NOT TO BE DISCLOSED TO OTHERS. REPRODUCED OR USED FOR ANY OTHER PURPOSE EXCEPT AS AUTHORIZED IN WRITING BY DANIELS MANUFACTURING. MUST BE RETURNED TO DANIELS MANUFACTURING CORP. ON COMPLETION OF ORDER OR OTHER PURPOSE FOR WHICH LENT.</div>	MATERIAL	N/A	ITEM	PART NO.	QTY.	DESCRIPTION/REMARKS			
			DRN.	DATE		DANIELS MANUFACTURING CORP. ORLANDO, FLORIDA CAGE 11851			
			Kirk C Koons	6/8/2012					
			CHK'D.	DATE					
<div>CREATED FROM AN INVENTOR MODEL. CHANGES MUST BE REFLECTED IN THE 3D PART</div>	HEAT TREAT	N/A	APP'D.	DATE	TITLE  DIE SET, 14-16 AWG,  INSULATED				
			APP'D.	DATE					
			NOTE: THIS DRAWING IS AN OUTLINE DRAWING OF THE RESPECTIVE DMC PART NUMBER INDICATED. ACTUAL DMC PART NUMBER IS DRAWING NUMBER WITHOUT THE "-ENV" SUFFIX						
			DO NOT SCALE DRAWING	FINISH	N/A	WHERE USED:		SIZE	SCALE
B	2 : 1	Y671-ENV				1	2		
POSTING		DWG. NO.				REV.			
		Y671-ENV				4			

REVISIONS				
REV. SYM.	E.C.O. NUMBER	DESCRIPTION	BY DATE	APP'D DATE



OLD GAGING FOR  
PREVIOUS REVISION DIE  
SETS (NOT MARKED WITH  
REVISION LETTER)

UNCONTROLLED DOCUMENT  
WILL NOT BE UPDATED

<b>RESTRICTED &amp; CONFIDENTIAL</b> CONFIDENTIAL PROPERTY OF DANIELS MANUFACTURING CORP. NOT TO BE DISCLOSED TO OTHERS, REPRODUCED OR USED FOR ANY OTHER PURPOSE, EXCEPT AS AUTHORIZED IN WRITING BY DANIELS MANUFACTURING. MUST BE RETURNED TO DANIELS MANUFACTURING CORP. ON COMPLETION OF ORDER OR OTHER PURPOSE FOR WHICH LENT.		MATERIAL   HEAT TREAT   FINISH		ITEM	PART NO.	QTY.	DESCRIPTION/REMARKS	
				DRN.	TS	DATE 8/22/88	 DANIELS MANUFACTURING CORP. ORLANDO, FLORIDA CAGE 11851	
				CHK'D.	DH	DATE 8/22/88		
				APP'D.	AAM	DATE 8/22/88		
DO NOT SCALE DRAWING				APP'D.		DATE	TITLE DIE SET ENVELOPE DRAWING	
				NOTE:			WHERE USED:	
				THIS DRAWING IS AN OUTLINE DRAWING OF THE RESPECTIVE DMC PART NUMBER INDICATED. ACTUAL DMC PART NUMBER IS DRAWING NUMBER WITHOUT THE "-ENV" SUFFIX.			SIZE B	SCALE NTS
							CAD P/N Y671-ENV	SHEET 2 OF 2
				POSTING			DWG. NO. Y671-ENV	REV. 4

# Mouser Electronics

Authorized Distributor

Click to View Pricing, Inventory, Delivery & Lifecycle Information:

[Daniels Manufacturing:](#)

[Y671](#)