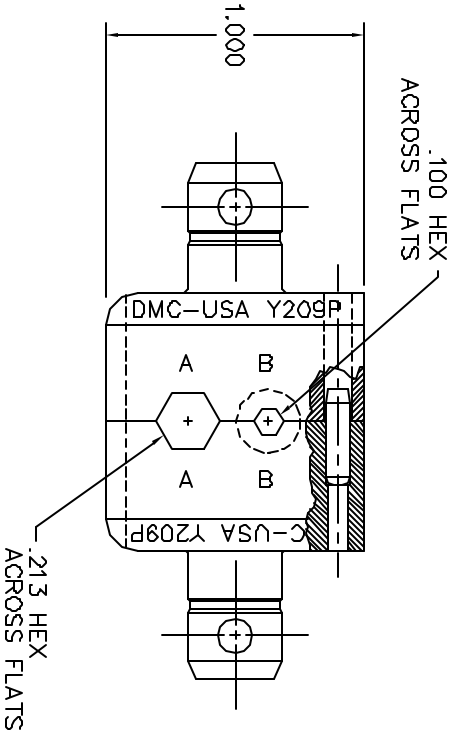
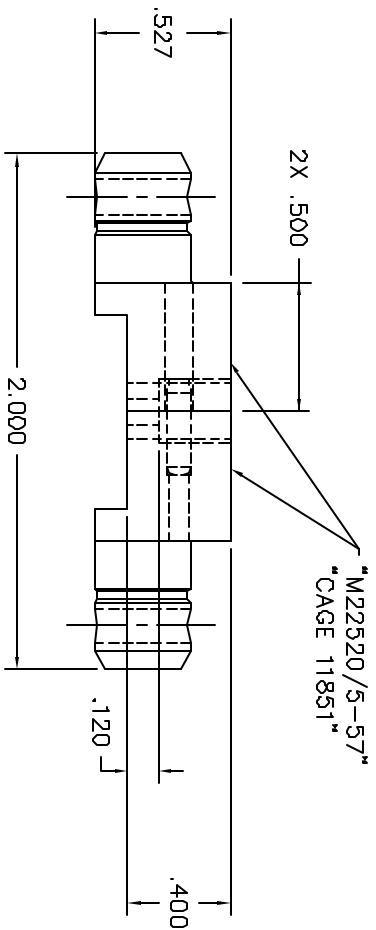


REVISIONS				
REV.	E.C.O.	DESCRIPTION	BY	APP'D
SYN.	NUMBER		DATE	DATE
1		ORIGINAL RELEASE	MMS 4/7/87	DC 4/7/87



UNCONTROLLED DOCUMENT
WILL NOT BE UPDATED

RESTRICTED & CONFIDENTIAL CONFIDENTIAL PROPERTY OF DANIELS MANUFACTURING CORP. NOT TO BE DISCLOSED TO OTHERS, REPRODUCED OR USED FOR ANY OTHER PURPOSES, EXCEPT AS AUTHORIZED BY DANIELS MANUFACTURING. MUST BE RETURNED TO DANIELS MANUFACTURING CORP. ON COMPLETION OF ORDER OR OTHER PURPOSE FOR WHICH LENT.		MATERIAL		ITEM		PART NO.		QTY.		DESCRIPTION/REMARKS	
		HEAT TREAT		DINL KMS 4/7/87		DATE		DATE		DATE	
FINISH		APPR.		DC		DATE		DATE		DATE	
DO NOT SCALE DRAWING		APPR.		DATE		DATE		DATE		DATE	
TITLE		SIZE		SCALE		CNO P/N		SHEET		OF	
DIE SET		B		2/1		Y209P-ENV		1		1	
ENVELOPE DRAWING		POSITION		P/N		Y209P-ENV		REV.		1	
WHERE USED:		M22520/5-57		M22520/5-57		M22520/5-57		M22520/5-57		M22520/5-57	

Mouser Electronics

Authorized Distributor

Click to View Pricing, Inventory, Delivery & Lifecycle Information:

[Daniels Manufacturing:](#)

[Y209P](#)