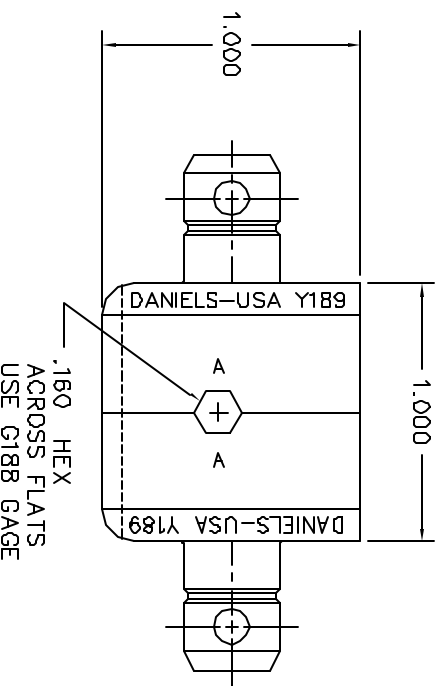
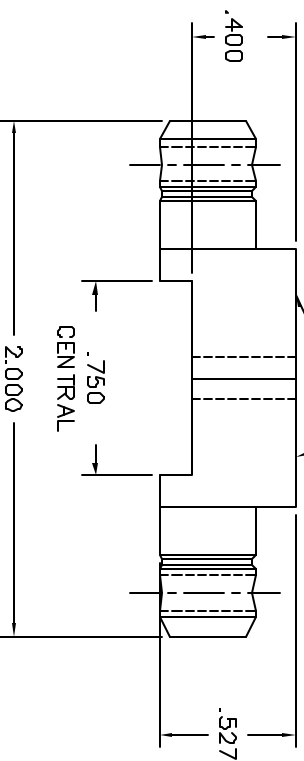


"M22520/5-10"
"CAGE 11851"




REVISIONS				
REV.	E.C.D.	DESCRIPTION	BY	APPROD.
SYM.	NUMBER		DATE	DATE
1		ORIGINAL RELEASE	LLW 4/20/89	TS 4/89

RESTRICTED & CONFIDENTIAL

CONFIDENTIAL PROPERTY OF DANIELS MANUFACTURING CORP. NOT TO BE DISCLOSED TO OTHERS, REPRODUCED OR USED FOR ANY OTHER PURPOSE, EXCEPT AS AUTHORIZED IN WRITING BY DANIELS MANUFACTURING. MUST BE RETURNED TO DANIELS MANUFACTURING OR DESTROYED BY ORDER OF OTHER PURCHASER FOR WHICH LENT.

UNCONTROLLED DOCUMENT
WILL NOT BE UPDATED

DO NOT SCALE DRAWING

RESTRICTED & CONFIDENTIAL		MATERIAL		ITEM		PART NO.		QTY.		DESCRIPTION/REMARKS	
CONFIDENTIAL PROPERTY OF DANIELS MANUFACTURING CORP. NOT TO BE DISCLOSED TO OTHERS, REPRODUCED OR USED FOR ANY OTHER PURPOSE EXCEPT AS AUTHORIZED IN WRITING BY DANIELS MANUFACTURING. MUST BE RETURNED TO DANIELS MANUFACTURING CORPORATION IN ORIGINAL ORDER FOR OTHER PURPOSE FOR WHICH ENT.				DRN.		DATE				DANIELS MANUFACTURING CORP. ORLANDO, FLORIDA CAGE 11851	
				LW		4/20/89					
		HEAT TREAT		CHK'D.		DATE					
				TS		4/21/89					
FINISH		APP'D.		DATE		TITLE		WHERE USED		(M22520/5-10) ENVELOPE DRAWING	
		WLP		4/20/89		SIZE SCALE					
		APP'D.		DATE		POSTING		P/N		REV.	
		AAM		4/21/89		Y189-ENV		Y189-ENV		1 1	
DO NOT SCALE DRAWING											

Mouser Electronics

Authorized Distributor

Click to View Pricing, Inventory, Delivery & Lifecycle Information:

[Daniels Manufacturing:](#)

[Y189](#)