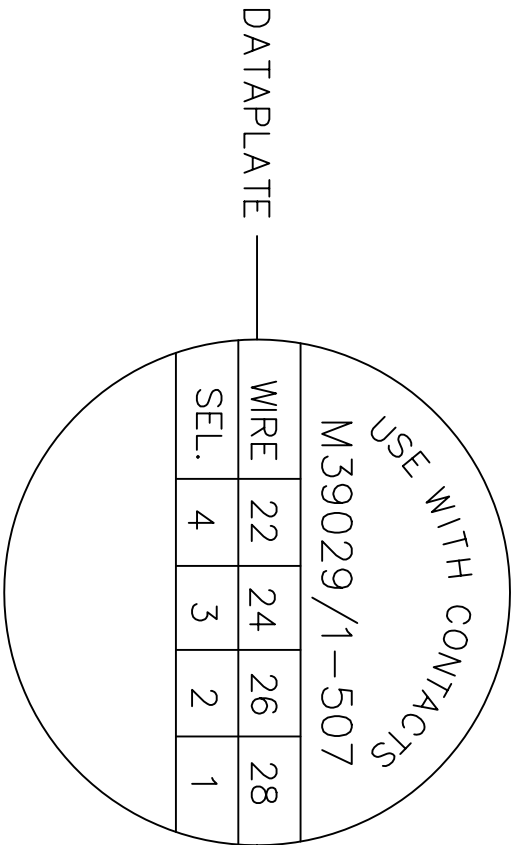
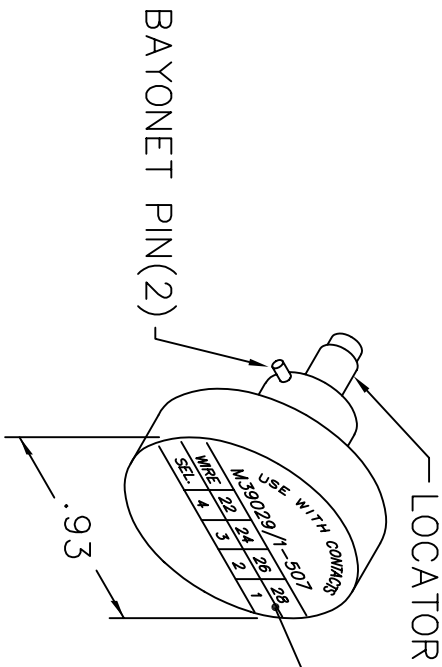
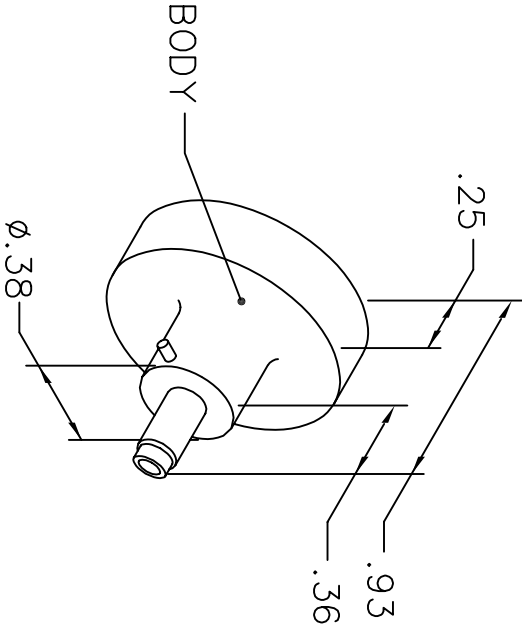


REVISIONS				
REV. SYM.	E.C.O. NUMBER	DESCRIPTION	BY DATE	APP'D DATE
1		ORIGINAL RELEASE	AAM 4-1-99	RRR 4-1-99

UNCONTROLLED DOCUMENT  
WILL NOT BE UPDATED



NOTE: FOR USE WITH DANIELS CRIMP TOOLS  
ACCOMMODATING "K" SERIES POSITIONERS

LOCATOR	
HOLE DIMENSIONS	ADDITIONAL FEATURES
$\phi .052$ $\nabla .439$	$\perp \phi .073$ $\nabla .141$

RESTRICTED & CONFIDENTIAL	
CONFIDENTIAL PROPERTY OF DANIELS MANUFACTURING CORP. NOT TO BE DISCLOSED TO OTHERS, REPRODUCED OR USED FOR ANY OTHER PURPOSE, EXCEPT AS AUTHORIZED IN WRITING BY DANIELS MANUFACTURING. MUST BE RETURNED TO DANIELS MANUFACTURING CORP. ON COMPLETION OF ORDER OR OTHER PURPOSE FOR WHICH LENT.	
DRN. A. MOO-YOUNG	DATE 4-1-99
CHKD. RRR	DATE 4-1-99
APPD.	DATE
APPD.	DATE
NOTE: THIS DRAWING IS AN OUTLINE DRAWING OF THE RESPECTIVE DMC PART NUMBER INDICATED. ACTUAL DMC PART NUMBER IS DRAWING NUMBER WITHOUT THE "-ENV" SUFFIX.	
TITLE: ENVELOPE DRAWING POSITIONER	
WHERE USED: SIZE SCALE CAD P/N SHEET OF	
A NTS K496-1-ENV 1 1	
POSTING DMC. NO. K496-1-ENV REV. 1	
DO NOT SCALE DRAWING	

# Mouser Electronics

Authorized Distributor

Click to View Pricing, Inventory, Delivery & Lifecycle Information:

[Daniels Manufacturing:](#)

[K496-1](#)