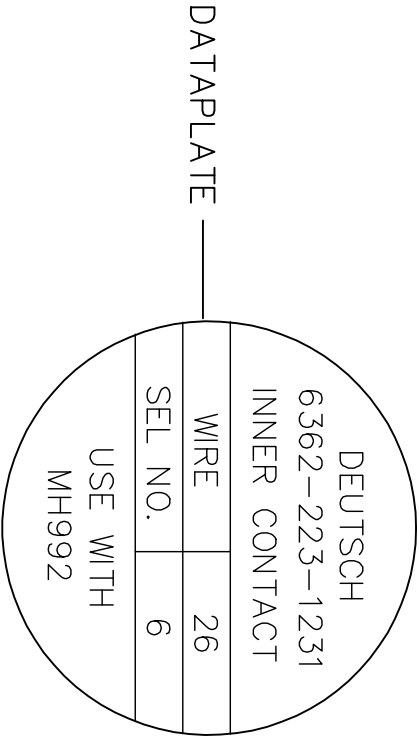
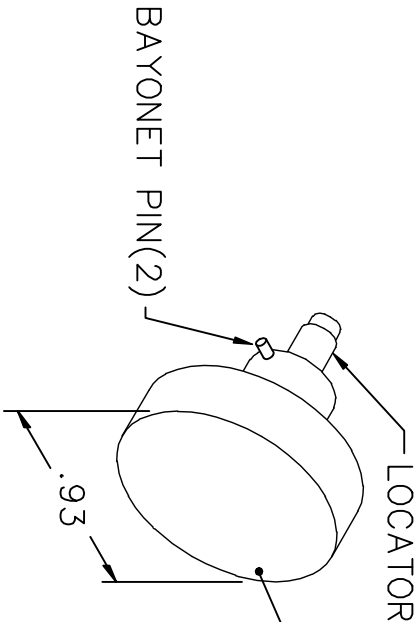
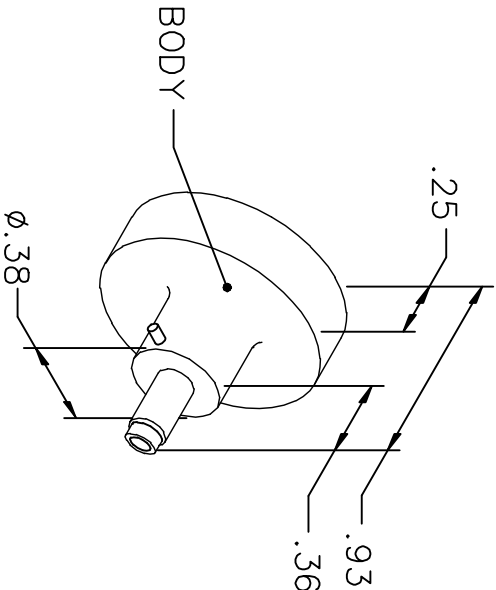


REVISIONS				
REV. SYM.	E.C.O. NUMBER	DESCRIPTION	BY DATE	APP'D DATE
1		ORIGINAL RELEASE	AAM 3-1-05	RRR 3-1-05

UNCONTROLLED DOCUMENT

WILL NOT BE UPDATED



NOTE: FOR USE WITH DANIELS CRIMP TOOLS
 ACCOMMODATING "K" SERIES POSITIONERS

LOCATOR	
HOLE DIMENSIONS	ADDITIONAL FEATURES
$\phi .038$ $\nabla .337$	

RESTRICTED & CONFIDENTIAL CONFIDENTIAL PROPERTY OF DANIELS MANUFACTURING CORP. NOT TO BE DISCLOSED TO OTHERS, REPRODUCED OR USED FOR ANY OTHER PURPOSE, EXCEPT AS AUTHORIZED IN WRITING BY DANIELS MANUFACTURING. MUST BE RETURNED TO DANIELS MANUFACTURING CORP. ON COMPLETION OF ORDER OR OTHER PURPOSE FOR WHICH LENT.				DRN. A. MOO-YOUNG CHK'D. RRR APP'D. APP'D.		DATE 3-1-05 DATE 3-1-05 DATE		TITLE ENVELOPE DRAWING POSITIONER WHERE USED: MH992 SIZE A SCALE NTS POSTING		CAD P/N K1605-ENV SHEET 1 OF 1 REV. 1	
DO NOT SCALE DRAWING				NOTE: THIS DRAWING IS AN OUTLINE DRAWING OF THE RESPECTIVE DMC PART NUMBER INDICATED. ACTUAL DMC PART NUMBER IS DRAWING NUMBER WITHOUT THE "-ENV" SUFFIX.		DANIELS MANUFACTURING CORP. ORLANDO, FLORIDA CASE 11851		DWG NO. K1605-ENV		REV. 1	

Mouser Electronics

Authorized Distributor

Click to View Pricing, Inventory, Delivery & Lifecycle Information:

[Daniels Manufacturing:](#)

[K1605](#)