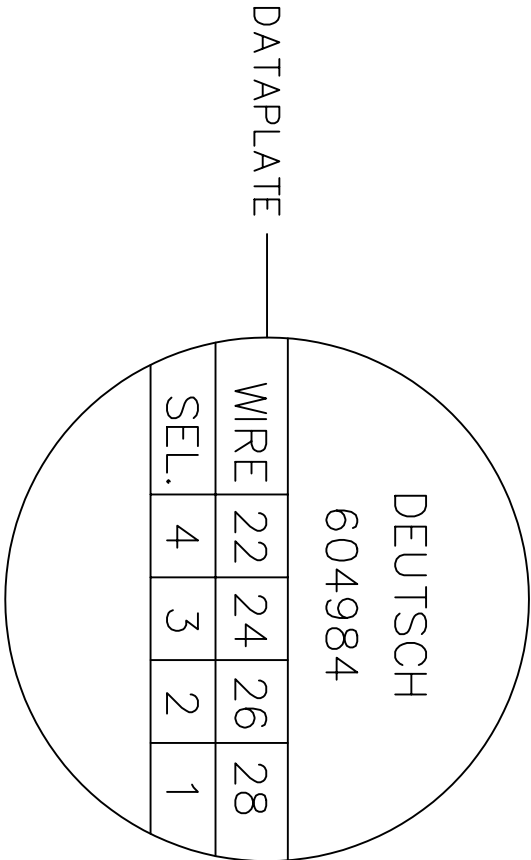
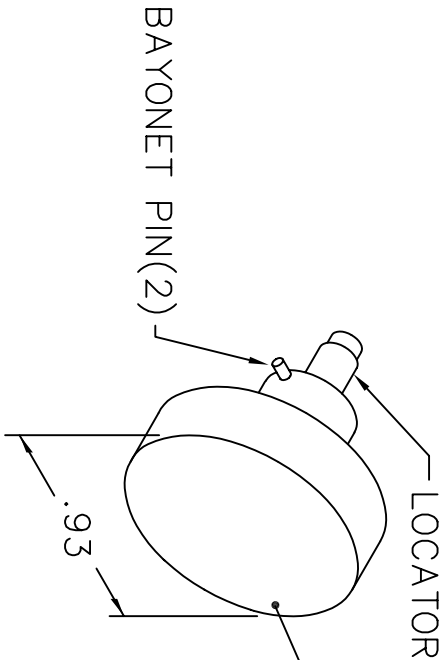
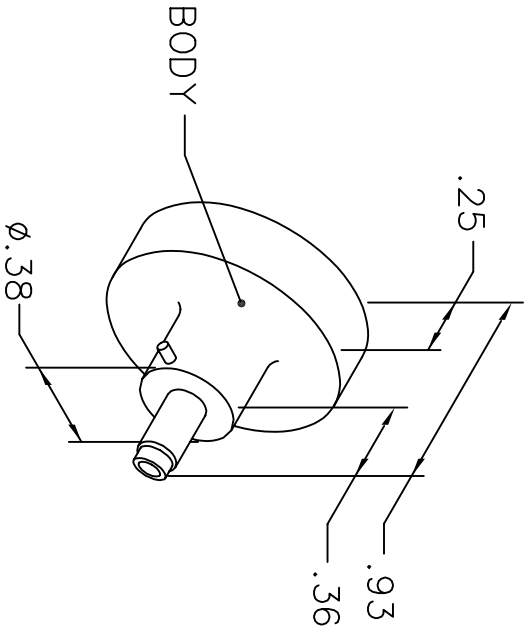


REVISIONS				
REV. SYM.	E.C.O. NUMBER	DESCRIPTION	BY DATE	APP'D DATE
2		REVISED WIRE/SEL NO	AAM 10-3-03	RRR 10-3-03

UNCONTROLLED DOCUMENT  
WILL NOT BE UPDATED



NOTE: FOR USE WITH DANIELS CRIMP TOOLS  
ACCOMMODATING "K" SERIES POSITIONERS

LOCATOR	
HOLE DIMENSIONS	ADDITIONAL FEATURES
$\phi .066$ $\nabla .344$	

RESTRICTED & CONFIDENTIAL  CONFIDENTIAL PROPERTY OF DANIELS MANUFACTURING CORP. NOT TO BE DISCLOSED TO OTHERS, REPRODUCED OR USED FOR ANY OTHER PURPOSE, EXCEPT AS AUTHORIZED IN WRITING BY DANIELS MANUFACTURING. MUST BE RETURNED TO DANIELS MANUFACTURING CORP. ON COMPLETION OF ORDER OR OTHER PURPOSE FOR WHICH LENT.			
DRN. A. MOO-YOUNG CHK'D. RRR APP'D. APP'D.	DATE 6-7-02 DATE 6-7-02 DATE DATE	TITLE ENVELOPE DRAWING POSITIONER	
NOTE: THIS DRAWING IS AN OUTLINE DRAWING OF THE RESPECTIVE DMC PART NUMBER INDICATED. ACTUAL DMC PART NUMBER IS DRAWING NUMBER WITHOUT THE "-ENV" SUFFIX.		WHERE USED: AFMB SIZE A SCALE NTS POSTING CAD P/N K1494-ENV DWG. NO. K1494-ENV	
DO NOT SCALE DRAWING		SHEET 1 OF 1 REV. 2	

**DMC** DANIELS MANUFACTURING CORP.  
ORLANDO, FLORIDA  
CAGE 11851

# Mouser Electronics

Authorized Distributor

Click to View Pricing, Inventory, Delivery & Lifecycle Information:

[Daniels Manufacturing:](#)

[K1494](#)