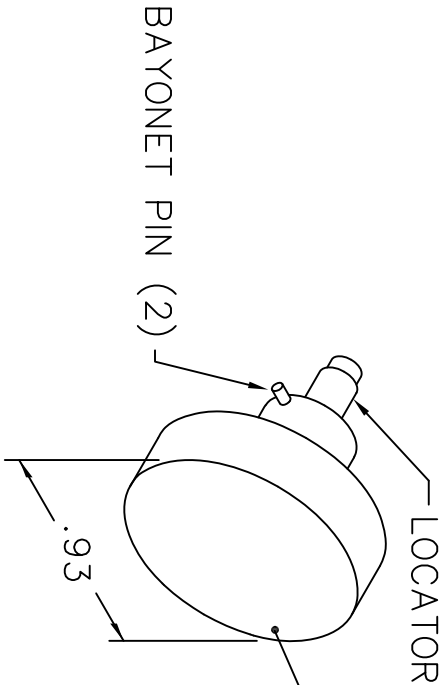
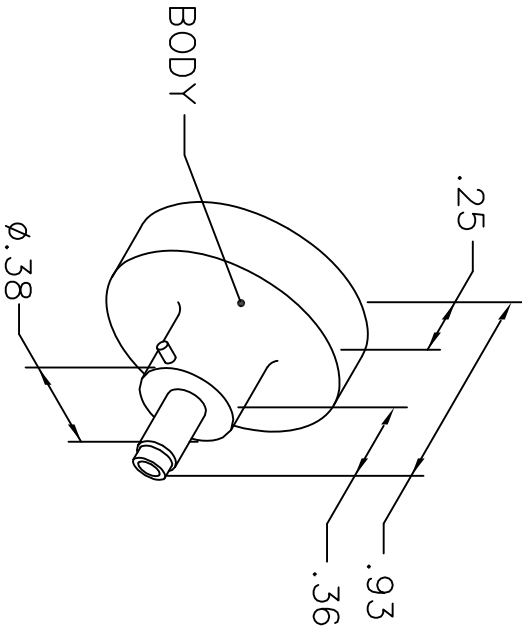


REVISIONS				
REV. SYM.	E.C.O. NUMBER	DESCRIPTION	BY DATE	APP'D DATE
1		ORIGINAL RELEASE	JWJ 1/23/07	RRR 1/23/07

UNCONTROLLED DOCUMENT
WILL NOT BE UPDATED



K 3606-06			
K 3607-16			
WIRE	16	18	20
SEL.	8	8	7
HARWIN			
P/N ZK 3609-00			
TD1995			

NOTE: FOR USE WITH DANIELS CRIMP TOOLS
ACCOMMODATING "K" SERIES POSITIONERS

LOCATOR	
HOLE DIMENSIONS	ADDITIONAL FEATURES
$\phi .047$ $\pm .409$	$\square \phi .086$ $\pm .395$ $\square \phi .098$ $\pm .085$

RESTRICTED & CONFIDENTIAL
CONFIDENTIAL PROPERTY OF DANIELS MANUFACTURING CORP. NOT TO BE DISCLOSED TO OTHERS, REPRODUCED OR USED FOR ANY OTHER PURPOSE, EXCEPT AS AUTHORIZED IN WRITING BY DANIELS MANUFACTURING.
MUST BE RETURNED TO DANIELS MANUFACTURING CORP. ON COMPLETION OF ORDER OR OTHER PURPOSE FOR WHICH LENT.

DRN. J. JOYCE	DATE 1/23/07	NOTE: THIS DRAWING IS AN OUTLINE DRAWING OF THE RESPECTIVE DMC PART NUMBER INDICATED. ACTUAL DMC PART NUMBER IS DRAWING NUMBER WITHOUT THE "-ENV" SUFFIX.	
CHK'D. RRR	DATE 1/23/07		
APP'D.	DATE		
APP'D.	DATE	TITLE ENVELOPE DRAWING POSITIONER	
WHERE USED: AFM8		SIZE A	SCALE NTS
		CAD P/N K1420-ENV	SHEET 1 OF 1
		DWG. NO. K1420-ENV	REV. 1

DO NOT SCALE DRAWING

Mouser Electronics

Authorized Distributor

Click to View Pricing, Inventory, Delivery & Lifecycle Information:

[Daniels Manufacturing:](#)

[K1420](#)