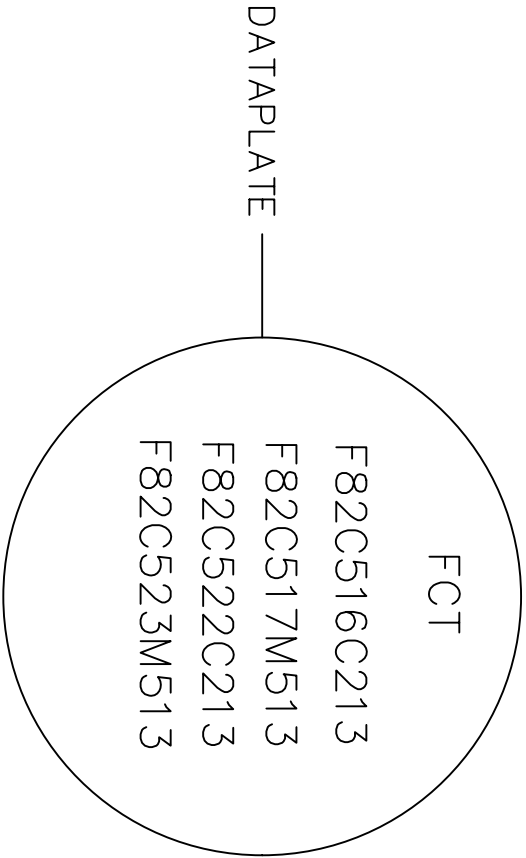
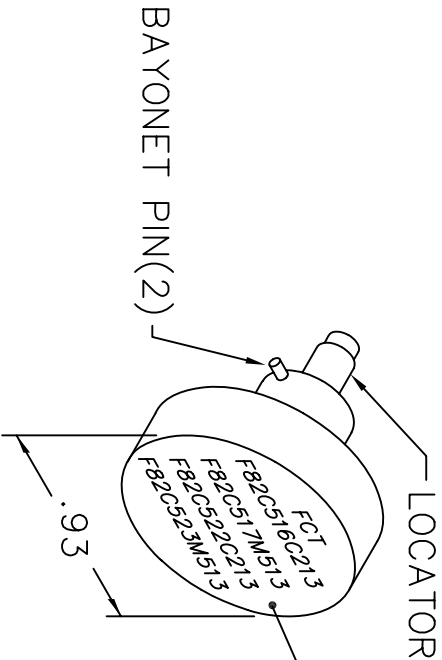
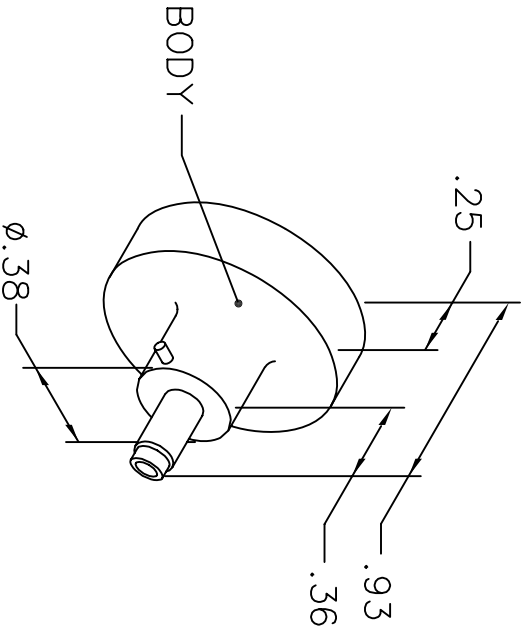


REVISIONS				
REV. SYM.	E.C.O. NUMBER	DESCRIPTION	BY DATE	APP'D DATE
1		ORIGINAL RELEASE	AAM 11-28-01	RRR 11-28-01

UNCONTROLLED DOCUMENT
WILL NOT BE UPDATED



NOTE: FOR USE WITH DANIELS CRIMP TOOLS
ACCOMMODATING "K" SERIES POSITIONERS

LOCATOR	
HOLE DIMENSIONS	ADDITIONAL FEATURES
$\phi .057$ $\nabla .58 \text{ MIN.}$	$\perp \phi .072$ $\nabla .013$

RESTRICTED & CONFIDENTIAL		TITLE	
CONFIDENTIAL PROPERTY OF DANIELS MANUFACTURING CORP. NOT TO BE DISCLOSED TO OTHERS, REPRODUCED OR USED FOR ANY OTHER PURPOSE, EXCEPT AS AUTHORIZED IN WRITING BY DANIELS MANUFACTURING. MUST BE RETURNED TO DANIELS MANUFACTURING CORP. ON COMPLETION OF ORDER OR OTHER PURPOSE FOR WHICH LENT.		ENVELOPE DRAWING POSITIONER	
DRN. A. MOO-YOUNG	DATE 11-28-01	WHERE USED: AFM8	
CHK'D. RRR	DATE 11-28-01	SIZE A	CAD P/N K1417-ENV
APP'D.	DATE	SCALE NTS	SHEET 1 OF 1
APP'D.	DATE	POSTING	REV. 1
NOTE: THIS DRAWING IS AN OUTLINE DRAWING OF THE RESPECTIVE DMC PART NUMBER INDICATED. ACTUAL DMC PART NUMBER IS DRAWING NUMBER WITHOUT THE "-ENV" SUFFIX.		DANIELS MANUFACTURING CORP. ORLANDO, FLORIDA CAGE 11851	
DO NOT SCALE DRAWING		K1417-ENV	

Mouser Electronics

Authorized Distributor

Click to View Pricing, Inventory, Delivery & Lifecycle Information:

[Daniels Manufacturing:](#)

[K1417](#)