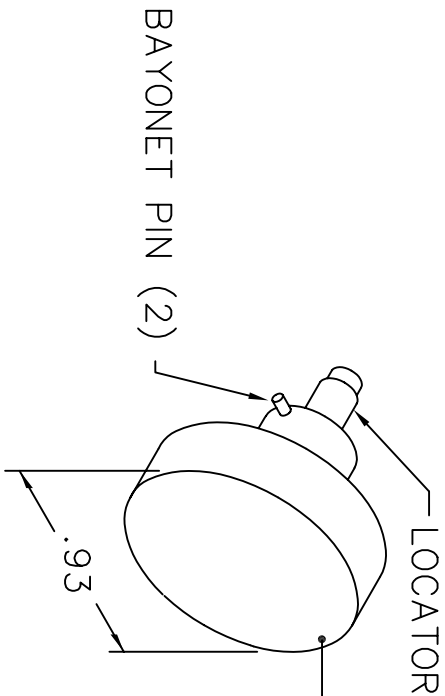
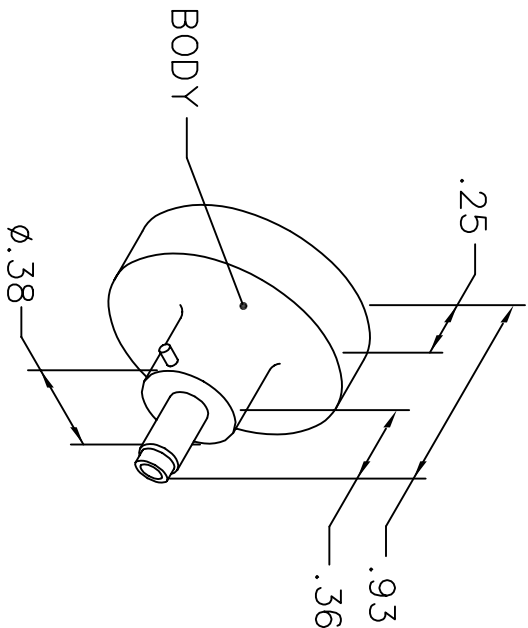


REVISIONS				
REV. SYM.	E.C.O. NUMBER	DESCRIPTION	BY DATE	APP'D DATE
1		ORIGINAL RELEASE	JWJ 2/16/04	RRR 2/16/04

UNCONTROLLED DOCUMENT
WILL NOT BE UPDATED



USE WITH CONTACTS		
SEL	WIRE SIZE	CONTACT
4	26	WHIRLWIND PIN OR SOCKET CONTACT
5	24	
6	22	
7	20	

1. FOR USE WITH DANIELS CRIMP TOOLS
ACCOMMODATING "K" SERIES POSITIONERS

NOTES:

LOCATOR	
HOLE DIMENSIONS	ADDITIONAL FEATURES
$\varnothing.078$ $\pm.58$ MIN.	$\perp \varnothing.094$ $\pm.126$

RESTRICTED & CONFIDENTIAL		DO NOT SCALE DRAWING	
CONFIDENTIAL PROPERTY OF DANIELS MANUFACTURING CORP. NOT TO BE DISCLOSED TO OTHERS, REPRODUCED OR USED FOR ANY OTHER PURPOSE, EXCEPT AS AUTHORIZED IN WRITING BY DANIELS MANUFACTURING. MUST BE RETURNED TO DANIELS MANUFACTURING CORP. ON COMPLETION OF ORDER OR OTHER PURPOSE FOR WHICH LENT.			
DRN. J. JOYCE	DATE 2/16/04	NOTE: THIS DRAWING IS AN OUTLINE DRAWING OF THE RESPECTIVE DMC PART NUMBER INDICATED. ACTUAL DMC PART NUMBER IS DRAWING NUMBER WITHOUT THE "-ENV" SUFFIX.	
CHK'D. RRR	DATE 2/16/04		
APP'D.	DATE		
APP'D.	DATE		
TITLE		WHERE USED:	
POSITIONER ENVELOPE DRAWING		SIZE SCALE CAD P/N SHEET OF	
		A NTS K13-3-ENV 1 1	
		POSTING DMC. NO. K13-3-ENV REV. 1	

DMC DANIELS MANUFACTURING CORP.
ORLANDO, FLORIDA
CAGE 11851

Mouser Electronics

Authorized Distributor

Click to View Pricing, Inventory, Delivery & Lifecycle Information:

[Daniels Manufacturing:](#)

[K13-3](#)