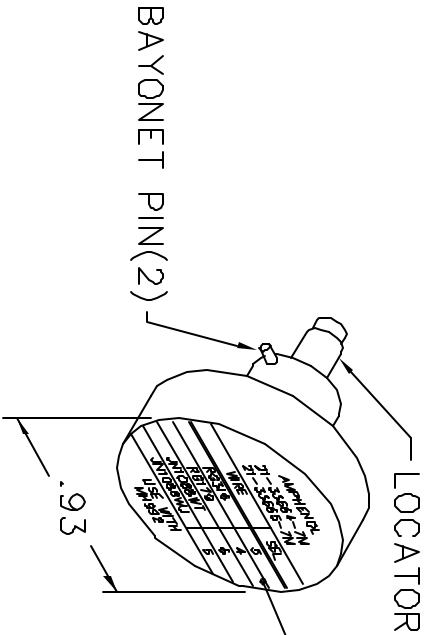
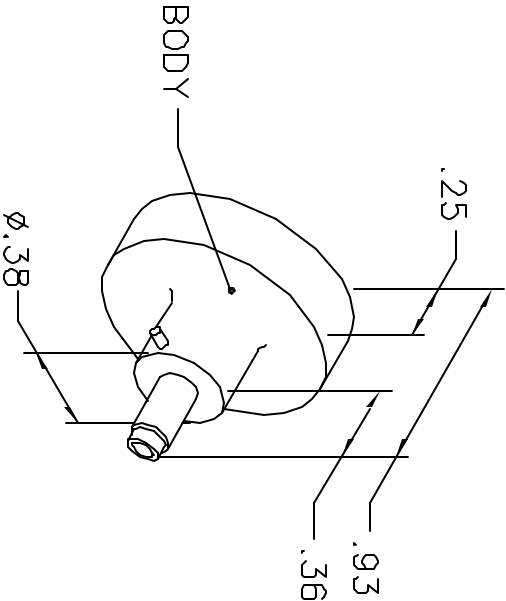


REVISIONS				
REV. SYML	E.C.D. NUMBER	DESCRIPTION	BY DATE	APP'D DATE
1		ORIGINAL RELEASE	8-4-99 AAM	8-4-99 RRR

UNCONTROLLED DOCUMENT
WILL NOT BE UPDATED



AMPHENOL	
21-33664-7M	
21-33665-7M	
WIRE	SEL
RG316	5
RG179	4
JN1088WT	6
JN1088WU	5
USE WITH MH992	

NOTE: FOR USE WITH DANIELS CRIMP TOOL,
PART NUMBER MH992.

LOCATOR	
HOLE DIMENSIONS	ADDITIONAL FEATURES
Ø.038	└┐ Ø.055
└┐.580 MIN.	└┐.022

RESTRICTED & CONFIDENTIAL

CONFIDENTIAL PROPERTY OF DANIELS MANUFACTURING CORP. NOT TO BE DISCLOSED TO OTHERS, REPRODUCED OR USED FOR ANY OTHER PURPOSE, EXCEPT AS AUTHORIZED IN WRITING BY DANIELS MANUFACTURING. MUST BE RETURNED TO DANIELS MANUFACTURING CORP. ON COMPLETION OF ORDER OR OTHER PURPOSE FOR WHICH LENT.

DO NOT SCALE DRAWING

DRN. A. MOO-YOUNG	DATE 8-4-99	<div> <div> </div> <div> DANIELS MANUFACTURING CORP. ORLANDO, FLORIDA CAGE 117851 </div> </div>	
CHK'D. RRR	DATE 8-4-99		
APP'D.	DATE		
APP'D.	DATE	<div> <div> TITLE ENVELOPE DRAWING POSITIONER </div> <div> WHERE USED: MH992 </div> </div>	
<div> <div>SIZE A</div> <div>SCALE NTS</div> <div>POSTING</div> </div>		<div> <div>CAD P/N K1360-ENV</div> <div>SHEET 1</div> <div>OF 1</div> </div>	<div> <div>P/N K1360-ENV</div> <div>REV. 1</div> </div>

Mouser Electronics

Authorized Distributor

Click to View Pricing, Inventory, Delivery & Lifecycle Information:

[Daniels Manufacturing:](#)

[K1360](#)