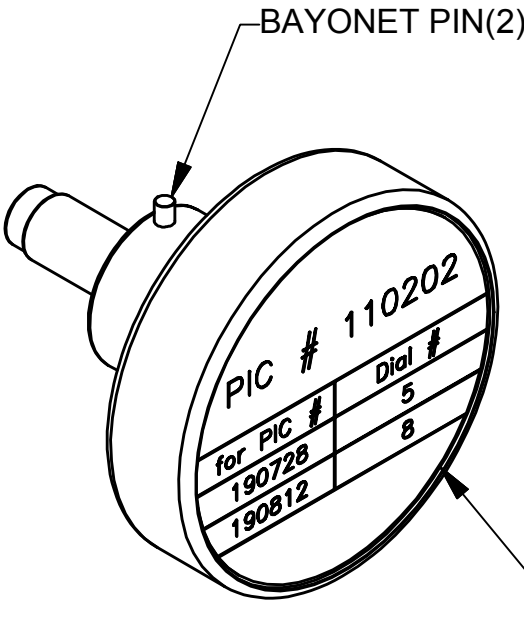
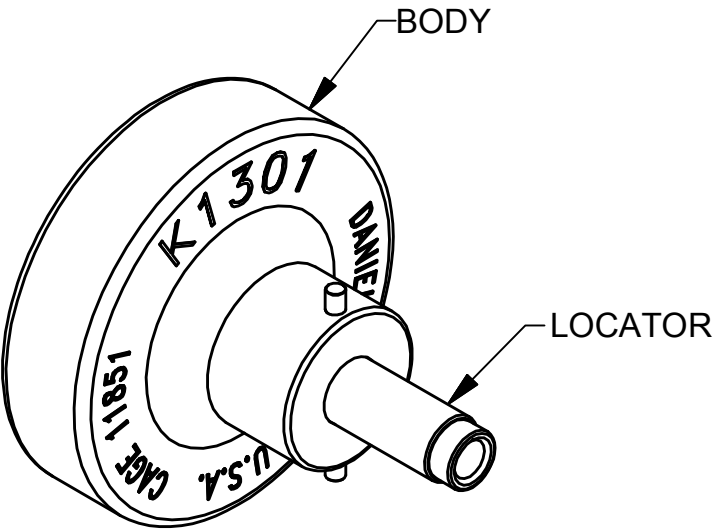
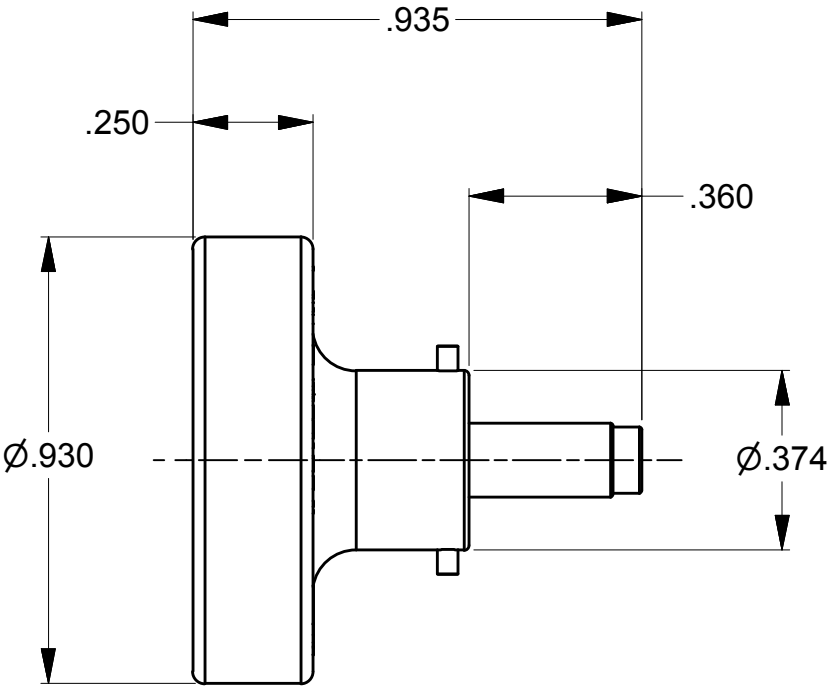


REVISIONS				
REV SYM	ECO NUMBER	DESCRIPTION	BY DATE	APP'D DATE
2	23274	DATAPLATE CHANGE	TD 02-26-14	




PIC # 110202	
for PIC #	Dial #
190728	5
190812	8

LOCATOR	
HOLE DIMENSIONS	ADDITIONAL FEATURES
Ø.089	
▽.575	

UNCONTROLLED DOCUMENT
WILL NOT BE UPDATED

DIMENSIONS IN INCHES - UNLESS OTHERWISE SPECIFIED

<div>RESTRICTED & CONFIDENTIAL</div> <div>CONFIDENTIAL PROPERTY OF DANIELS MANUFACTURING CORP. NOT TO BE DISCLOSED TO OTHERS, REPRODUCED OR USED FOR ANY OTHER PURPOSE EXCEPT AS AUTHORIZED IN WRITING BY DANIELS MANUFACTURING. MUST BE RETURNED TO DANIELS MANUFACTURING CORP. ON COMPLETION OF ORDER OR OTHER PURPOSE FOR WHICH LENT.</div> <div>CREATED FROM AN INVENTOR MODEL. CHANGES MUST BE REFLECTED IN THE 3D PART</div> <div>DO NOT SCALE DRAWING</div>	MATERIAL	N/A	ITEM	PART No.		QTY.	DESCRIPTION/REMARKS		
	HEAT TREAT	N/A	DRN. <i>Tony Dilworth</i>	DATE 02-26-14	 DANIELS MANUFACTURING CORP. ORLANDO, FLORIDA CAGE 11851				
			CHK'D.	DATE					
			APP'D.	DATE					
FINISH	N/A	NOTE:		TITLE					
		THIS DRAWING IS AN OUTLINE DRAWING OF THE RESPECTIVE DMC PART NUMBER INDICATED. ACTUAL DMC PART NUMBER IS DRAWING NUMBER WITHOUT THE "-ENV" SUFFIX		POSITIONER ENVELOPE DRAWING					
				WHERE USED: AFM8					
			SIZE B	SCALE 2.5X	CAD P/N K1301-ENV		SHEET OF 1 1		
			POSTING		P/N K1301-ENV		REV. 2		

Mouser Electronics

Authorized Distributor

Click to View Pricing, Inventory, Delivery & Lifecycle Information:

[Daniels Manufacturing:](#)

[K1301](#)