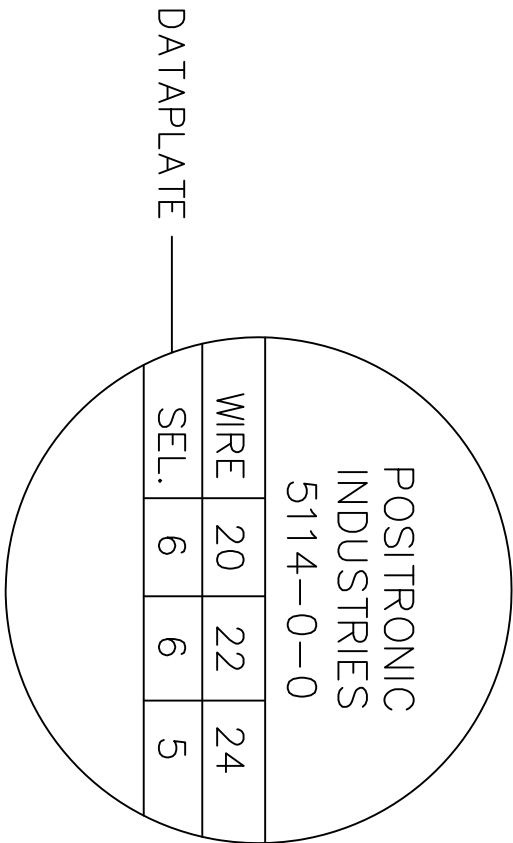
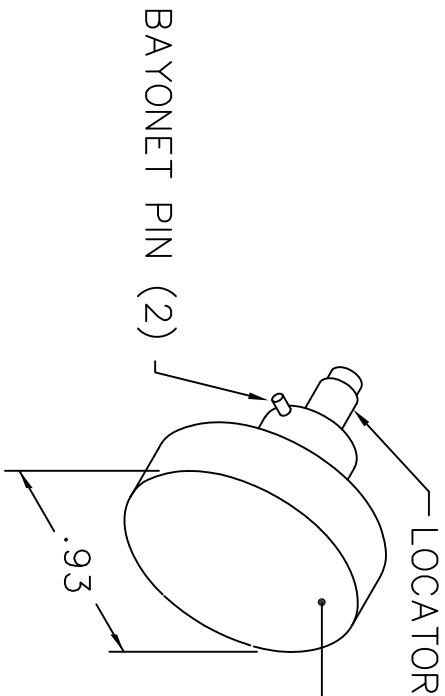
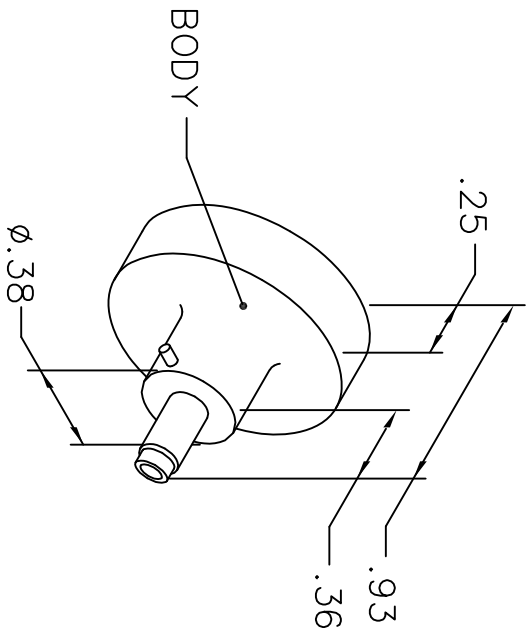


REVISIONS				
REV. SYM.	E.C.O. NUMBER	DESCRIPTION	BY DATE	APP'D DATE
1		ORIGINAL RELEASE	JWJ 3/14/07	RRR 3/14/07

UNCONTROLLED DOCUMENT  
WILL NOT BE UPDATED



NOTE: FOR USE WITH DANIELS CRIMP TOOL, AFM8.

LOCATOR	
HOLE DIMENSIONS	ADDITIONAL FEATURES
Ø.086 ±.584	└┐ Ø.098 ±.38

<b>RESTRICTED &amp; CONFIDENTIAL</b>	
CONFIDENTIAL PROPERTY OF DANIELS MANUFACTURING CORP. NOT TO BE DISCLOSED TO OTHERS, REPRODUCED OR USED FOR ANY OTHER PURPOSE, EXCEPT AS AUTHORIZED IN WRITING BY DANIELS MANUFACTURING. MUST BE RETURNED TO DANIELS MANUFACTURING CORP. ON COMPLETION OF ORDER OR OTHER PURPOSE FOR WHICH LENT.	
DRN. J. JOYCE	DATE 3/14/07
CHK'D. RRR	DATE 3/14/07
APP'D.	DATE
APP'D.	DATE
NOTE: THIS DRAWING IS AN OUTLINE DRAWING OF THE RESPECTIVE DMC PART NUMBER INDICATED. ACTUAL DMC PART NUMBER IS DRAWING NUMBER WITHOUT THE "-ENV" SUFFIX.	
WHERE USED:	
SIZE A	SCALE NTS
CAD P/N K1956-ENV	SHEET 1 OF 1
POSTING	REV. 1
TITLE: POSITIONER ENVELOPE DRAWING	
DANIELS MANUFACTURING CORP. ORLANDO, FLORIDA CAGE 11851	
DWG. NO. K1196-ENV	

# Mouser Electronics

Authorized Distributor

Click to View Pricing, Inventory, Delivery & Lifecycle Information:

[Daniels Manufacturing:](#)

[K1196](#)