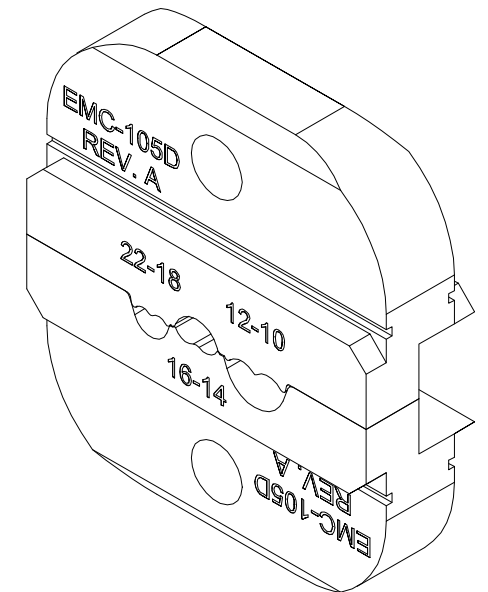
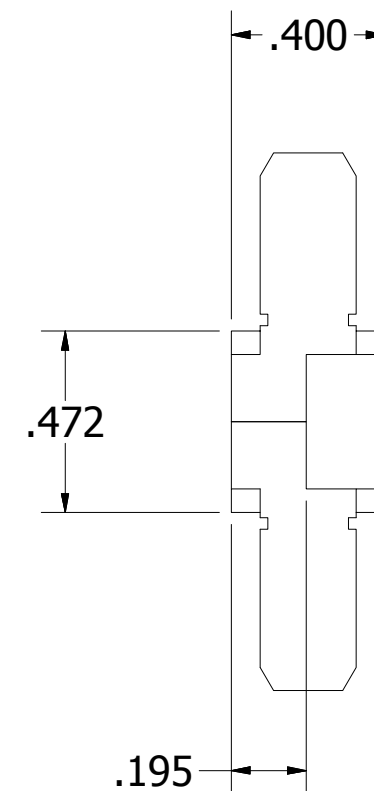
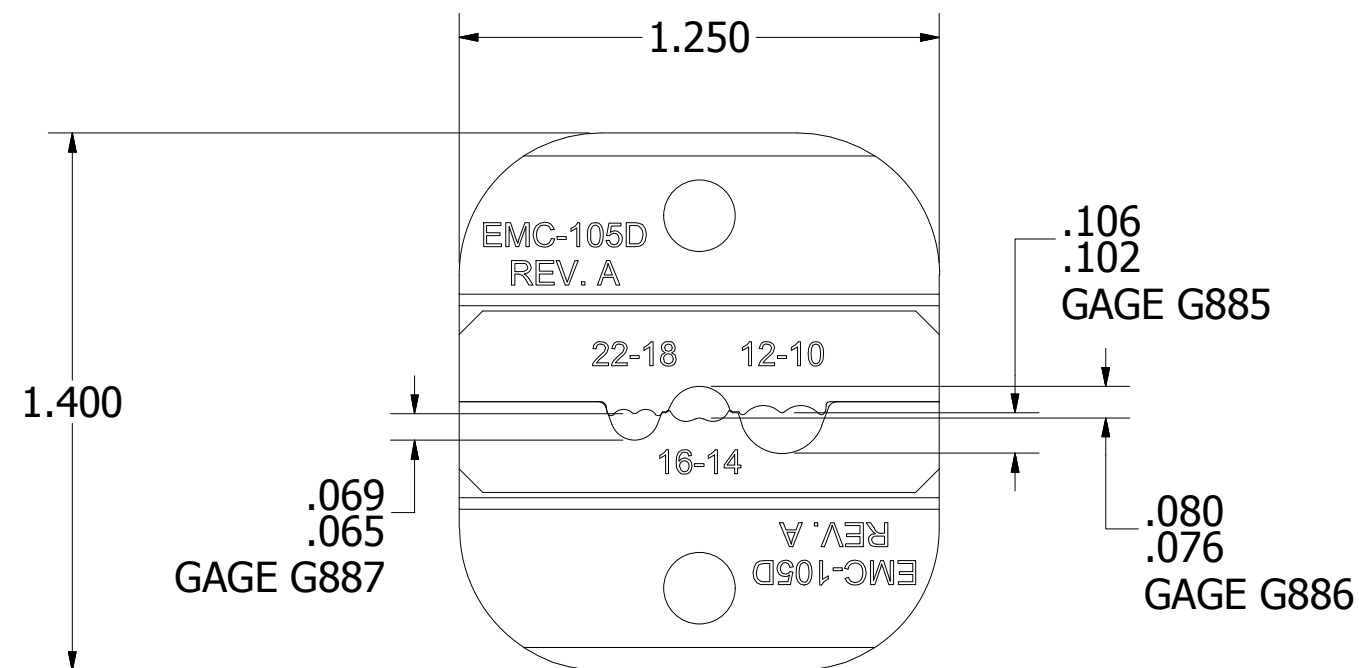


USERS MUST ASSURE THEY ARE  
USING THE CORRECT REVISION.

REVISIONS						
REV	ECO NO.	DESCRIPTION	BY	DATE	APP'D BY	DATE
1		ORIGINAL RELEASE	K. KOONS	2/14/2017		
2		UPDATED GAGING	K. KOONS	5/9/2017		




ISOMETRIC VIEW  
REF ONLY

**UNCONTROLLED DOCUMENT  
WILL NOT BE UPDATED**

**DIMENSIONS IN INCHES - UNLESS OTHERWISE SPECIFIED**

NOTES:

	MATERIAL	ITEM	PART NO.	QTY.	DESCRIPTION / REMARKS	
	NA	DRN. KIRK C KOONS CHK'D.	DATE 4/14/2016		 DANIELS MANUFACTURING CORP. ORLANDO, FLORIDA CAGE 11851	
		TLM	DATE 4/14/2016			
<u>RESTRICTED &amp; CONFIDENTIAL</u>  CONFIDENTIAL PROPERTY OF DANIELS MANUFACTURING CORP. NOT TO BE DISCLOSED TO OTHERS. REPRODUCTION OR USED FOR ANY OTHER PURPOSE EXCEPT AS AUTHORIZED IN WRITING BY DANIELS MANUFACTURING. MUST BE RETURNED TO DANIELS MANUFACTURING CORP. ON COMPLETION OF ORDER OR PURPOSES FOR WHICH LENT.	HEAT TREAT	NOTE:  THIS DRAWING IS AN OUTLINE DRAWING OF THE RESPECTIVE DMC PART NUMBER INDICATED. ACTUAL DMC PART NUMBER IS CAD PART NUMBER WITHOUT THE "-ENV" SUFFIX		TITLE  DIE SET, EMC ENVELOPE DRAWING		
CREATED FROM AN INVENTOR MODEL. CHANGES MUST BE REFLECTED IN THE 3D PART	FINISH			WHERE USED: EMC3300		
DO NOT SCALE DRAWING				SIZE  B	SCALE  2 : 1	CAD P/N EMC-105D-ENV  DWG. NO. EMC-105D

# Mouser Electronics

Authorized Distributor

Click to View Pricing, Inventory, Delivery & Lifecycle Information:

[Daniels Manufacturing:](#)

[EMC-105D](#)