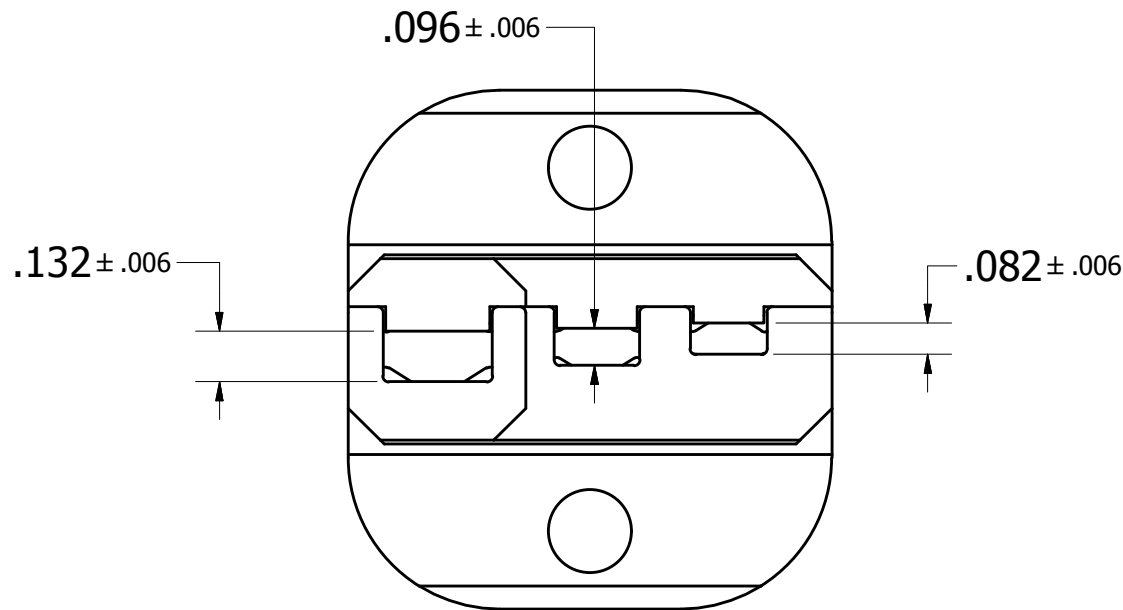
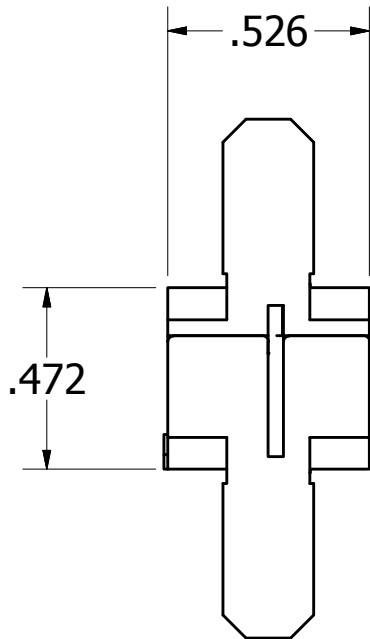
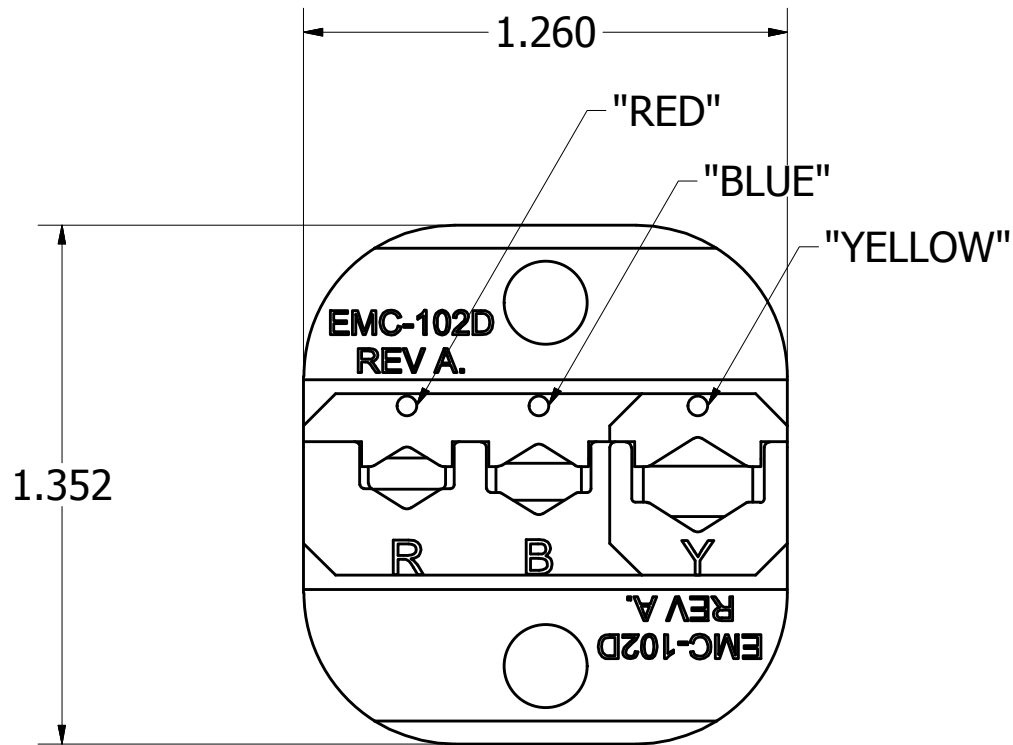


USERS MUST ASSURE THEY ARE
USING THE CORRECT REVISION.

REVISIONS						
REV	ECO NO.	DESCRIPTION	BY	DATE	APP'D BY	DATE
1		ORIGINAL RELEASE	K. KOONS	2/5/2015		



UNCONTROLLED DOCUMENT WILL NOT BE UPDATED

DIMENSIONS IN INCHES - UNLESS OTHERWISE SPECIFIED

2. CHECK CRIMP HEIGHTS WITH G931.
1. FOR USE ON COMMERCIAL GRADE RED, BLUE
& YELLOW INSULATED LUGS.

NOTES:

MATERIAL	ITEM	PART NO.	QTY.	DESCRIPTION / REMARKS	
				DRN. KIRK C KOONS	DATE 12/12/2014
NA	RRR			CHK'D. RRR	DATE 12/12/2014
HEAT TREAT		NOTE:		TITLE	
NA		THIS DRAWING IS AN OUTLINE DRAWING OF THE RESPECTIVE DMC PART NUMBER INDICATED. ACTUAL DMC PART NUMBER IS CAD PART NUMBER WITHOUT THE "-ENV" SUFFIX		DIE SET, RBY ENVELOPE DRAWING	
FINISH		NA		WHERE USED: EMC3300	
CREATED FROM AN INVENTOR MODEL. CHANGES MUST BE REFLECTED IN THE 3D PART		SIZE		SCALE	
DO NOT SCALE DRAWING		B		2 : 1	
		CAD P/N		SHEET	
		EMC-102D-ENV		1 OF 1	
		DWG. NO.		REV.	
		EMC-102D		1	

Mouser Electronics

Authorized Distributor

Click to View Pricing, Inventory, Delivery & Lifecycle Information:

[Daniels Manufacturing:](#)

[EMC-102D](#)