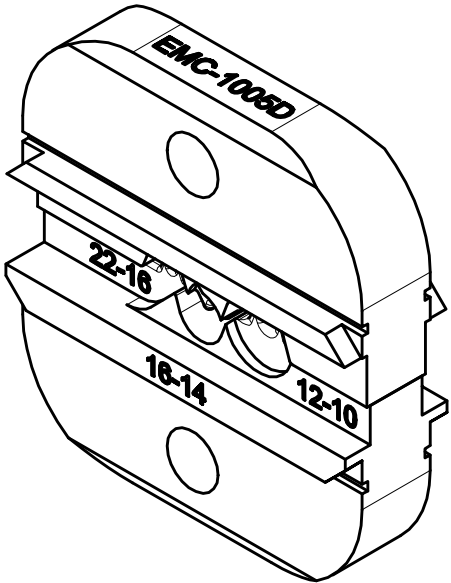
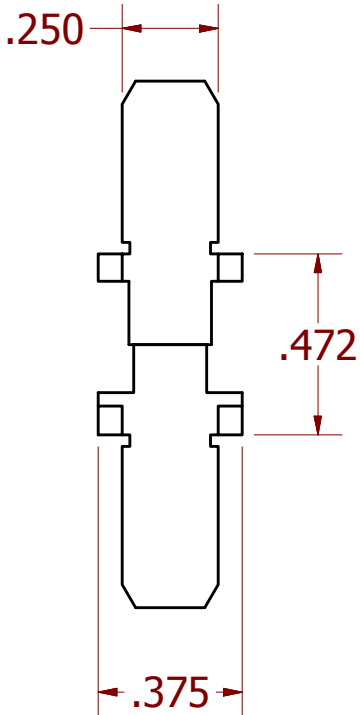
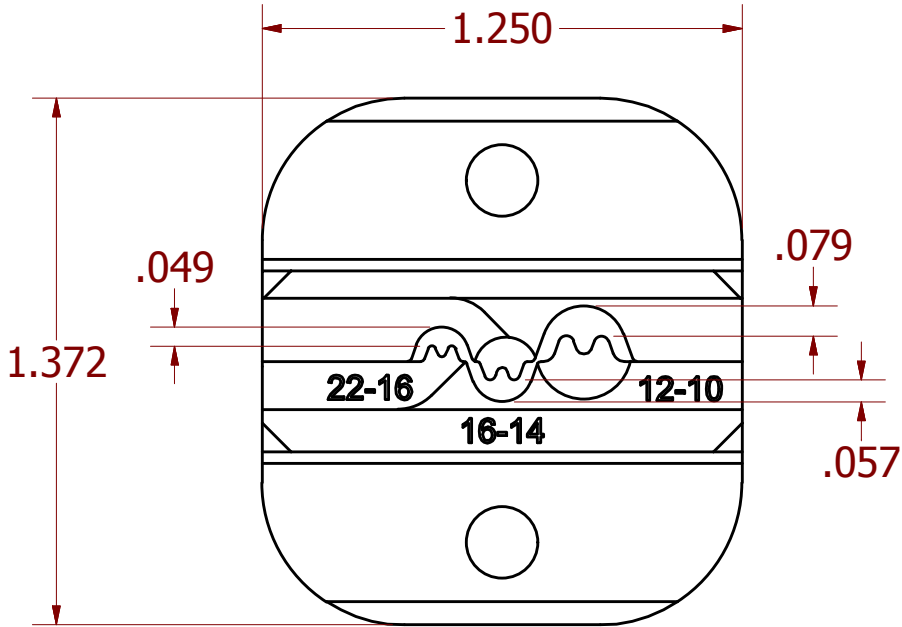


USERS MUST ASSURE THEY ARE
USING THE CORRECT REVISION.

REVISIONS						
REV	ECO NO.	DESCRIPTION	BY	DATE	APP'D BY	DATE
1		ORIGINAL RELEASE	K. KOONS	5/23/2016		



ISOMETRIC VIEW
REF ONLY

**UNCONTROLLED DOCUMENT
WILL NOT BE UPDATED**

DIMENSIONS IN INCHES - UNLESS OTHERWISE SPECIFIED

12-10 CAVITY = G741
16-14 CAVITY = G740
22-16 CAVITY = G739

NOTES:

MATERIAL	ITEM	PART NO.	QTY.	DESCRIPTION / REMARKS	
				DRN. CHK'D.	DATE
NA	KIRK C KOONS	2/26/2015		RRR	2/26/2015
RESTRICTED & CONFIDENTIAL		HEAT TREAT		NOTE:	
CONFIDENTIAL PROPERTY OF DANIELS MANUFACTURING CORP. NOT TO BE DISCLOSED TO OTHERS. REPRODUCTION OR USED FOR ANY OTHER PURPOSE EXCEPT AS AUTHORIZED IN WRITING BY DANIELS MANUFACTURING. MUST BE RETURNED TO DANIELS MANUFACTURING CORP. ON COMPLETION OF ORDER OR PURPOSES FOR WHICH LENT.		NA		THIS DRAWING IS AN OUTLINE DRAWING OF THE RESPECTIVE DMC PART NUMBER INDICATED. ACTUAL DMC PART NUMBER IS CAD PART NUMBER WITHOUT THE "-ENV" SUFFIX	
CREATED FROM AN INVENTOR MODEL. CHANGES MUST BE REFLECTED IN THE 3D PART		FINISH		TITLE	
DO NOT SCALE DRAWING		NA		DIE SET ENVELOPE DRAWING	
				WHERE USED:	
				SIZE	SCALE
				B	2 : 1
				CAD P/N	SHEET
				EMC-1005D-ENV	1 OF 1
				DWG. NO.	REV.
				EMC-1005D	1

Mouser Electronics

Authorized Distributor

Click to View Pricing, Inventory, Delivery & Lifecycle Information:

[Daniels Manufacturing:](#)

[EMC-1005D](#)