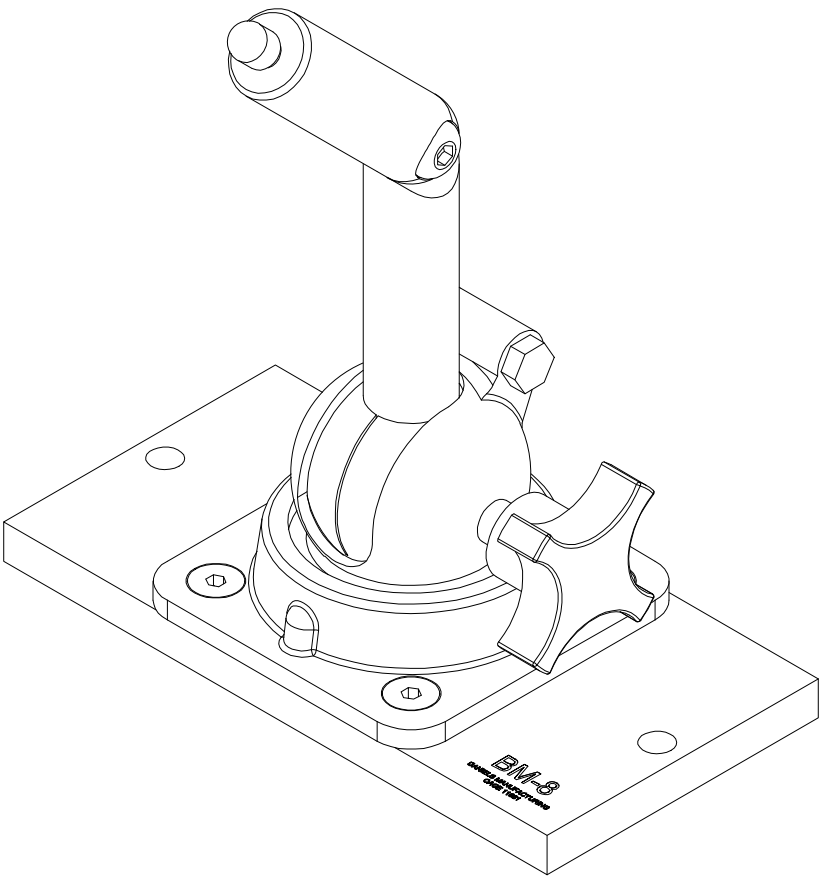
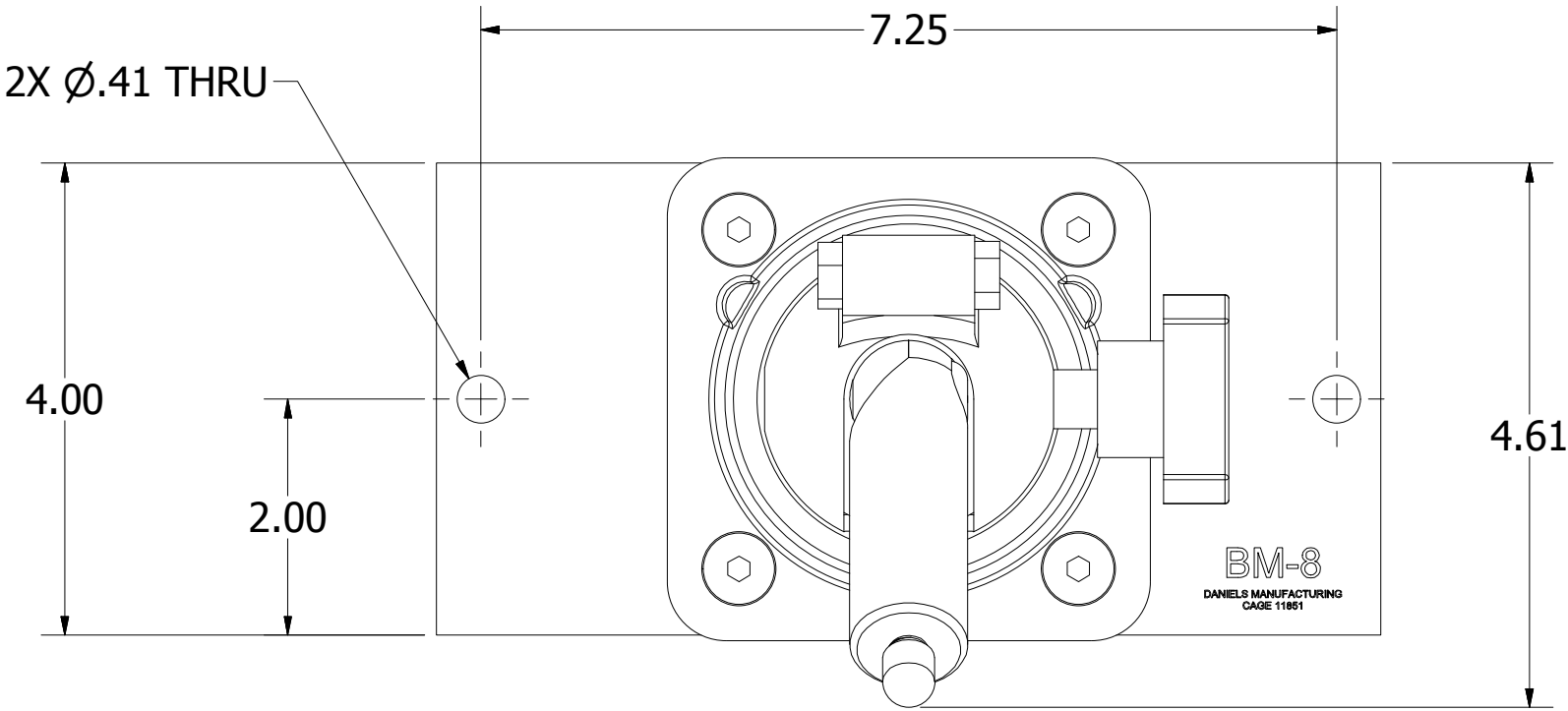
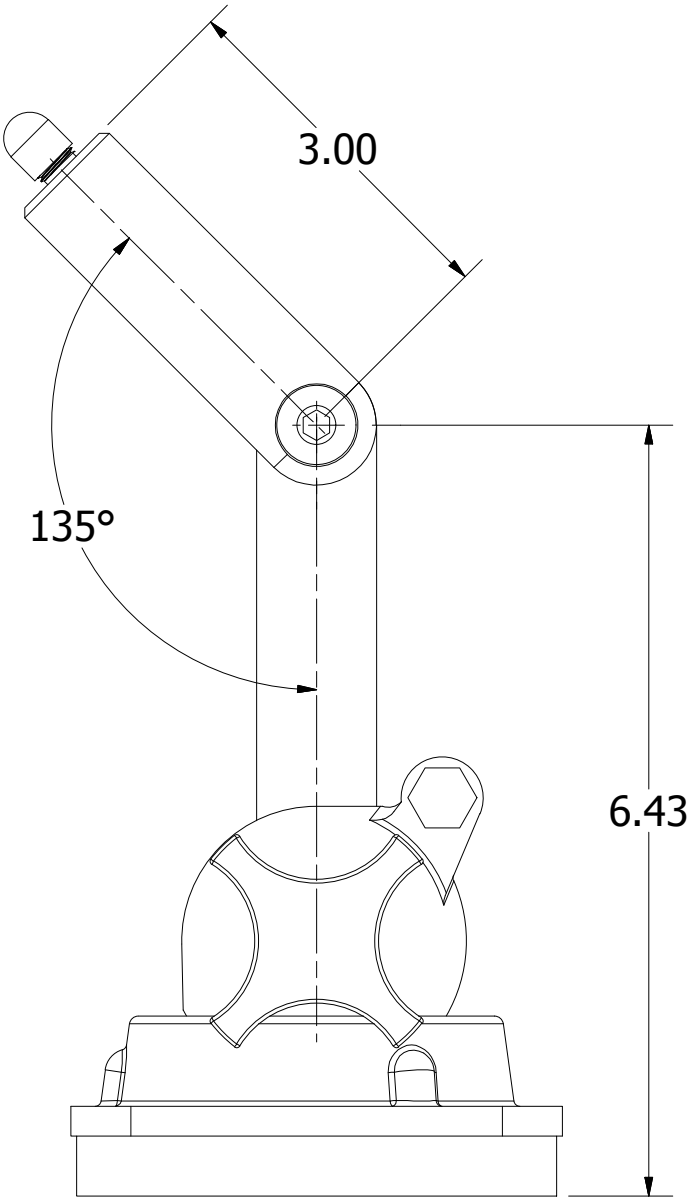
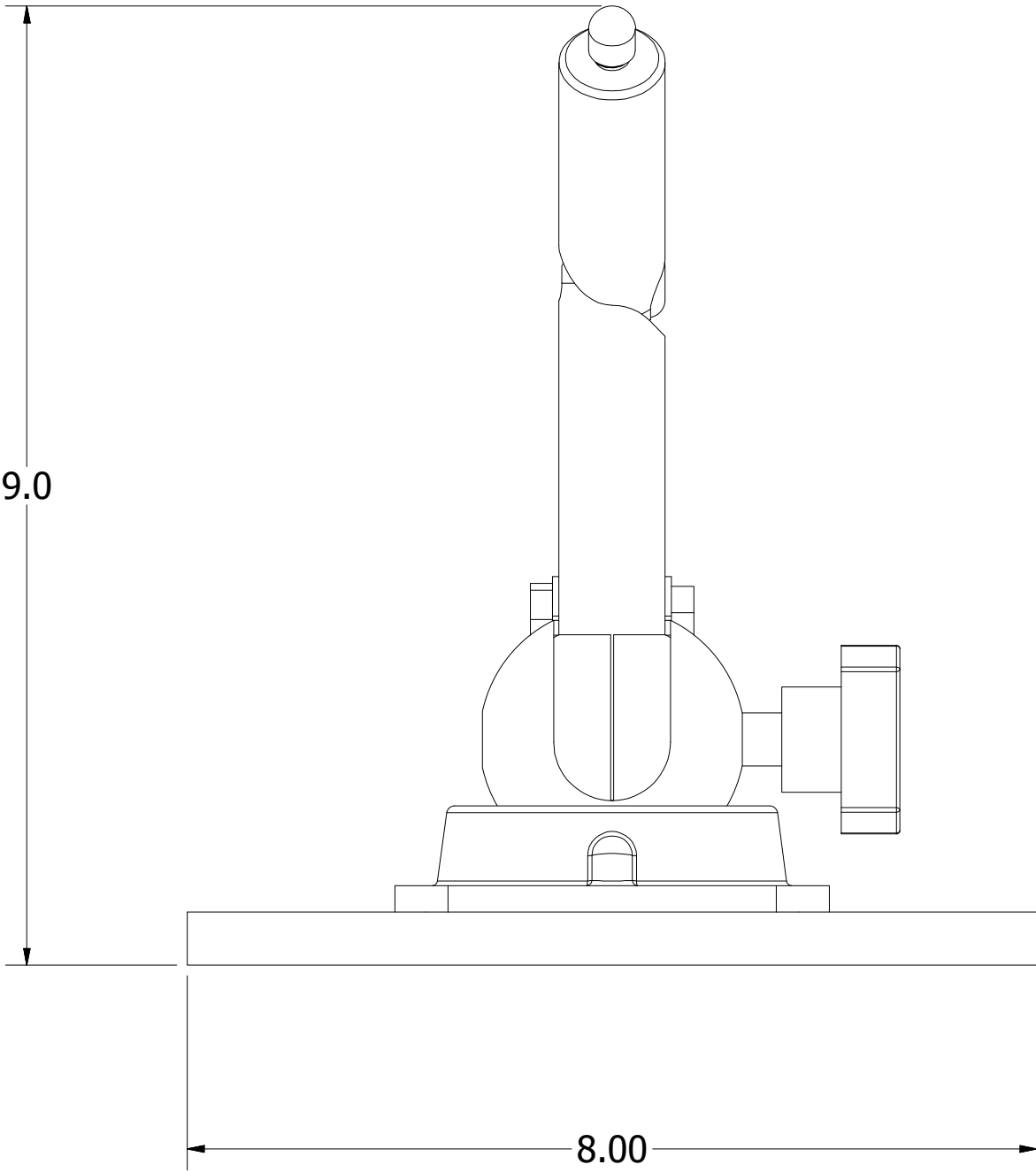


USERS MUST ASSURE THEY ARE  
USING THE CORRECT REVISION.

REVISIONS						
REV	ECO NO.	DESCRIPTION	BY	DATE	APP'D BY	DATE
1		ORIGINAL RELEASE	K. KOONS	10/3/2017		




ISOMETRIC VIEW  
REF ONLY



**UNCONTROLLED DOCUMENT  
WILL NOT BE UPDATED**  
DIMENSIONS IN INCHES - UNLESS OTHERWISE SPECIFIED

NOTES:

	MATERIAL	ITEM	PART NO.	QTY.	DESCRIPTION / REMARKS				
	NA	DRN. KIRK C KOONS CHK'D.	DATE 5/9/2016 DATE 5/10/2016		DANIELS MANUFACTURING CORP. ORLANDO, FLORIDA CAGE 11851				
		TLM							
<u>RESTRICTED &amp; CONFIDENTIAL</u> CONFIDENTIAL PROPERTY OF DANIELS MANUFACTURING CORP. NOT TO BE DISCLOSED TO OTHERS. REPRODUCTION OR USED FOR ANY OTHER PURPOSE EXCEPT AS AUTHORIZED IN WRITING BY DANIELS MANUFACTURING. MUST BE RETURNED TO DANIELS MANUFACTURING CORP. ON COMPLETION OF ORDER OR PURPOSES FOR WHICH LENT.	HEAT TREAT	NOTE: THIS DRAWING IS AN OUTLINE DRAWING OF THE RESPECTIVE DMC PART NUMBER INDICATED. ACTUAL DMC PART NUMBER IS CAD PART NUMBER WITHOUT THE "-ENV" SUFFIX		TITLE ADJUSTABLE BENCH MOUNT, ANGLED ENVELOPE DRAWING					
CREATED FROM AN INVENTOR MODEL. CHANGES MUST BE REFLECTED IN THE 3D PART	FINISH			WHERE USED:	SIZE	SCALE	CAD P/N	SHEET	REV.
DO NOT SCALE DRAWING	NA				C	5/8	BM-8-ENV DWG. NO. BM-8	1 OF 1	1

# Mouser Electronics

Authorized Distributor

Click to View Pricing, Inventory, Delivery & Lifecycle Information:

[Daniels Manufacturing:](#)

[BM-8](#)