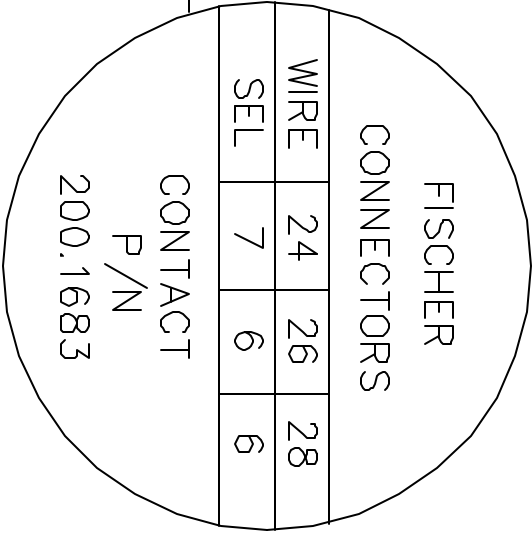
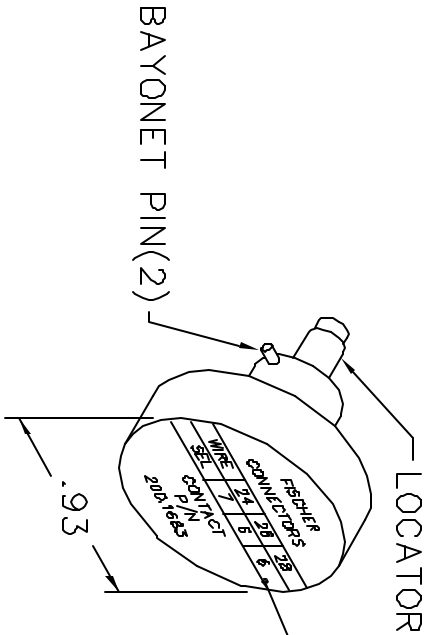
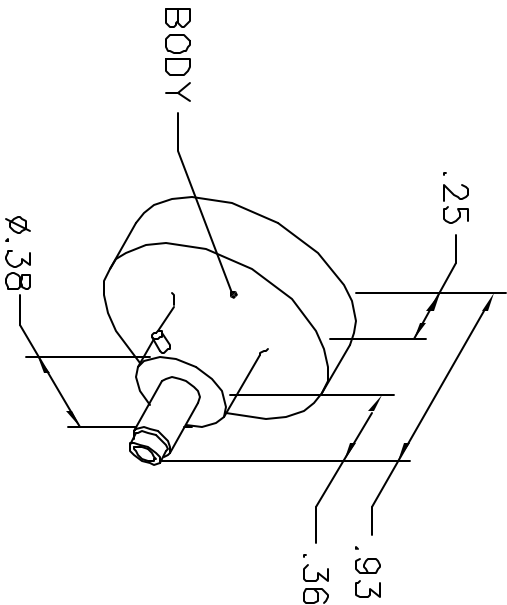


REVISIONS				
REV. SYM.	E.C.O. NUMBER	DESCRIPTION	BY DATE	APP'D DATE
1		ORIGINAL RELEASE	AAM 9-27-01	RRR 9-27-01

UNCONTROLLED DOCUMENT
WILL NOT BE UPDATED



NOTE: FOR USE WITH DANIELS CRIMP TOOLS
ACCOMMODATING "K" SERIES POSITIONERS

LOCATOR	
HOLE DIMENSIONS	ADDITIONAL FEATURES
$\phi .061$ $\nabla .531$	

RESTRICTED & CONFIDENTIAL
CONFIDENTIAL PROPERTY OF DANIELS MANUFACTURING CORP. NOT TO BE DISCLOSED TO OTHERS. REPRODUCED OR USED FOR ANY OTHER PURPOSE, EXCEPT AS AUTHORIZED IN WRITING, BY DANIELS MANUFACTURING. MUST BE RETURNED TO DANIELS MANUFACTURING CORP. ON COMPLETION OF ORDER OR OTHER PURPOSE FOR WHICH LENT.
DO NOT SCALE DRAWING

DRN. A. MOO-YOUNG	DATE 9-27-01	<div> <div> DANIELS MANUFACTURING CORP. ORLANDO, FLORIDA CAGE 11851 </div> </div>	
CHK'D. RRR	DATE 9-27-01		
APP'D.	DATE		
APP'D.	DATE	TITLE	
		ENVELOPE DRAWING POSITIONER	
		WHERE USED: AFMB	
		SIZE A	SCALE NTS
POSTING		CAD P/N K1326-ENV	SHEET 1 OF 1
		P/N K1326-ENV	REV. 1

Mouser Electronics

Authorized Distributor

Click to View Pricing, Inventory, Delivery & Lifecycle Information:

[Daniels Manufacturing:](#)

[K1326](#)