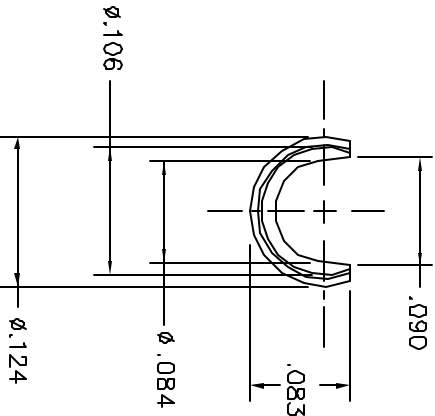
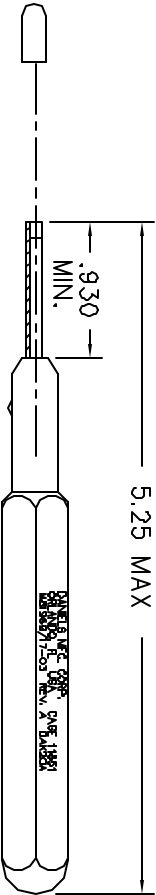
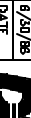


REVISIONS				
REV. NO.	DESCRIPTION	BY	DATE	APP'D
2	ADDED END VIEW	LW	8/27/91	8/31



ENLARGED END VIEW

RESTRICTED & CONFIDENTIAL									
CONFIDENTIAL PROPERTY OF DANIELS MANUFACTURING CORP. NOT TO BE DISCLOSED TO OTHERS, REPRODUCED OR USED FOR ANY OTHER PURPOSE, EXCEPT AS AUTHORIZED IN WRITING BY DANIELS MANUFACTURING. MUST BE RETURNED TO DANIELS MANUFACTURING CORP. ON COMPLETION OF ORDER OR OTHER PURPOSE FOR WHICH SENT.									
MATERIAL	ITEM		PART NO.		QTY.		DESCRIPTION/REMARKS		
	DIN.	MSS	DATE 8/20/91				<div></div> DANIELS MANUFACTURING CORP. ORLANDO, FLORIDA CASE 11851		
	ENCL. I.D.	DE	DATE 8/20/91						
HEAT TREAT	APP'D.	KT	DATE 8/30/91			TITLE INSTALLING TOOL #20 ENVELOPE DRAWING (M81969/17-03 REV. A)			
	APP'D.		DATE			WHERE USED: SIZE SCALE C/D P/N SHEET OF B NTS DAK20A-ENV 1 1 POSTING DWG. NO. DAK20A-ENV REV. 2			
NOTE: THIS DRAWING IS AN OUTLINE DRAWING OF THE RESPECTIVE INDICATED ACTUAL DIMS. PART NUMBER IS DRAWING NUMBER WITHOUT THE "-ENV" SUFFIX.									
DO NOT SCALE DRAWING									

UNCONTROLLED DOCUMENT  
WILL NOT BE UPDATED

# Mouser Electronics

Authorized Distributor

Click to View Pricing, Inventory, Delivery & Lifecycle Information:

[Daniels Manufacturing:](#)

[DAK20A](#)