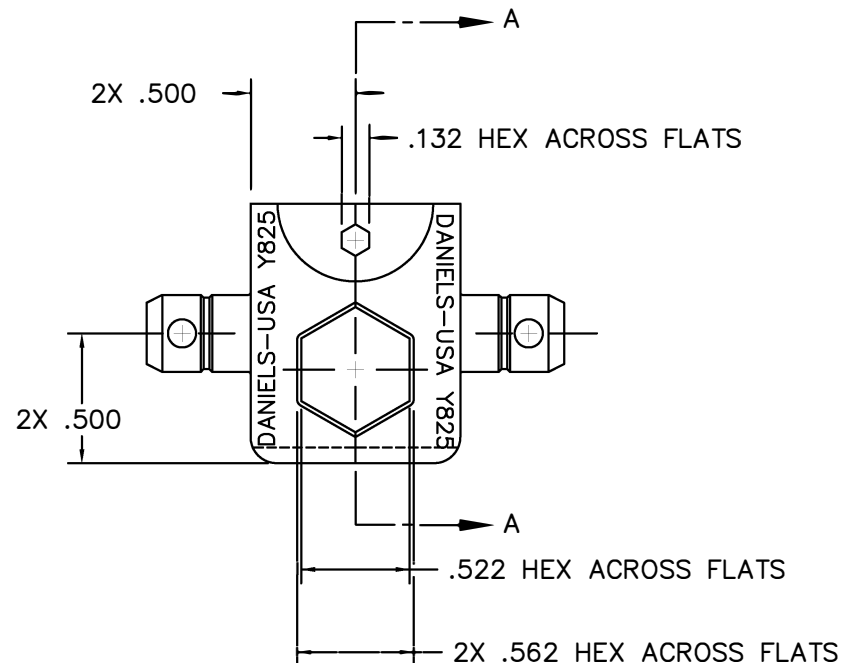
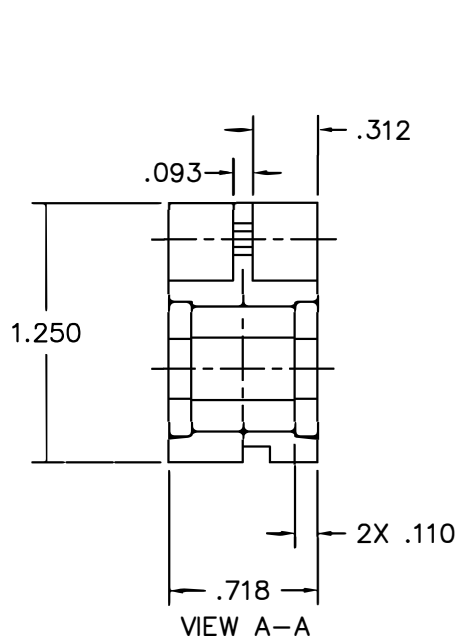



REVISIONS				
REV. SYM.	E.C.O. NUMBER	DESCRIPTION	BY DATE	APP'D DATE
1		ORIGINAL RELEASE	DAD 1-27-93	DE 1-93



**UNCONTROLLED DOCUMENT
WILL NOT BE UPDATED**

1. FUNCTIONAL EQUIVALENT TO KINGS KTH2177.
NOTES:

<div>RESTRICTED & CONFIDENTIAL</div> <div>CONFIDENTIAL PROPERTY OF DANIELS MANUFACTURING CORP. NOT TO BE DISCLOSED TO OTHERS, REPRODUCED OR USED FOR ANY OTHER PURPOSE, EXCEPT AS AUTHORIZED IN WRITING BY DANIELS MANUFACTURING. MUST BE RETURNED TO DANIELS MANUFACTURING CORP. ON COMPLETION OF ORDER OR OTHER PURPOSE FOR WHICH LENT.</div>	MATERIAL	ITEM		PART NO.		QTY.	DESCRIPTION/REMARKS		
	HEAT TREAT	DRN.		D.DEPAIVA		DATE 1-27-93		<div> DANIELS MANUFACTURING CORP. ORLANDO, FLORIDA CAGE 11851</div>	
		CHK'D.		DE		DATE 1-93			
		APP'D.				DATE			
		APP'D.				DATE			
DO NOT SCALE DRAWING	FINISH	NOTE:							
		THIS DRAWING IS AN OUTLINE DRAWING OF THE RESPECTIVE DMC PART NUMBER INDICATED. ACTUAL DMC PART NUMBER IS DRAWING NUMBER WITHOUT THE "-ENV" SUFFIX.							
		WHERE USED:							
		SIZE	SCALE	CAD P/N	SHEET		1	OF	
		B	1.5X	Y825-ENV					
		POSTING		DWG. NO.		Y825-ENV		REV.	1

Mouser Electronics

Authorized Distributor

Click to View Pricing, Inventory, Delivery & Lifecycle Information:

[Daniels Manufacturing:](#)

[Y825](#)