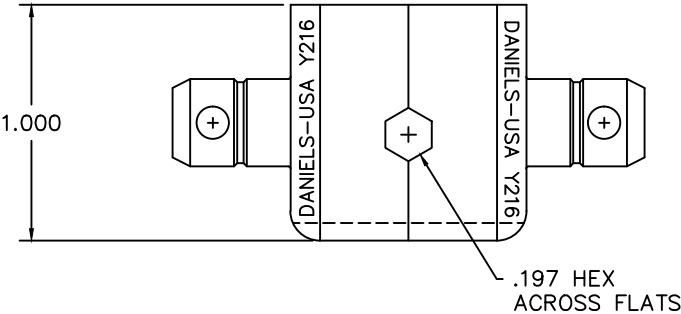
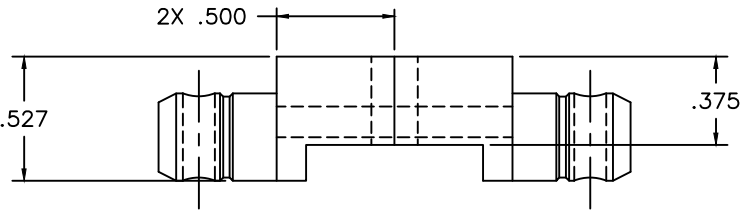


USER MUST ASSURE THEY ARE USING THE CORRECT REVISION



REVISIONS				
REV. SYM.	E.C.O. NUMBER	DESCRIPTION	BY DATE	APP'D DATE
1		ORIGINAL RELEASE	LGV 6/6/89	JS 6/89

UNCONTROLLED DOCUMENT
WILL NOT BE UPDATED
DIMENSIONS IN INCHES - UNLESS OTHERWISE SPECIFIED

RESTRICTED & CONFIDENTIAL		MATERIAL		ITEM	PART NO.		QTY.	DESCRIPTION/REMARKS	
CONFIDENTIAL PROPERTY OF DANIELS MANUFACTURING CORP. NOT TO BE DISCLOSED TO OTHERS, REPRODUCED OR USED FOR ANY OTHER PURPOSE, EXCEPT AS AUTHORIZED IN WRITING BY DANIELS MANUFACTURING. MUST BE RETURNED TO DANIELS MANUFACTURING CORP. ON COMPLETION OF ORDER OR OTHER PURPOSE FOR WHICH LENT.		HEAT TREAT		DRN.	LGV	DATE	6/6/89	DMC DANIELS MANUFACTURING CORP. ORLANDO, FLORIDA CAGE 11851	
				CHK'D.	JS	DATE	6/7/89		
				APP'D.	AAM	DATE	6/12/89		
				APP'D.		DATE			
DO NOT SCALE DRAWING		FINISH		NOTE: THIS DRAWING IS AN OUTLINE DRAWING OF THE RESPECTIVE DMC PART NUMBER INDICATED. ACTUAL DMC PART NUMBER IS DRAWING NUMBER WITHOUT THE "-ENV" SUFFIX.				TITLE DIE SET ENVELOPE DRAWING	
				WHERE USED:				SIZE B	
				SCALE 2X				CAD P/N Y216-ENV	
				POSTING				DWG. NO. Y216-ENV	
								SHEET 1 OF 1	
								REV. 1	

Mouser Electronics

Authorized Distributor

Click to View Pricing, Inventory, Delivery & Lifecycle Information:

[Daniels Manufacturing:](#)

[Y216](#)