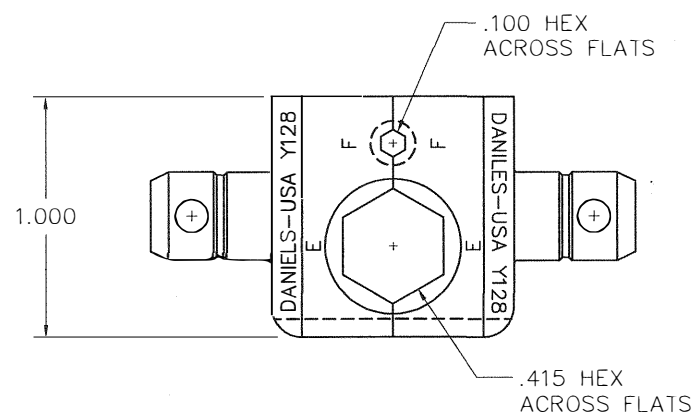
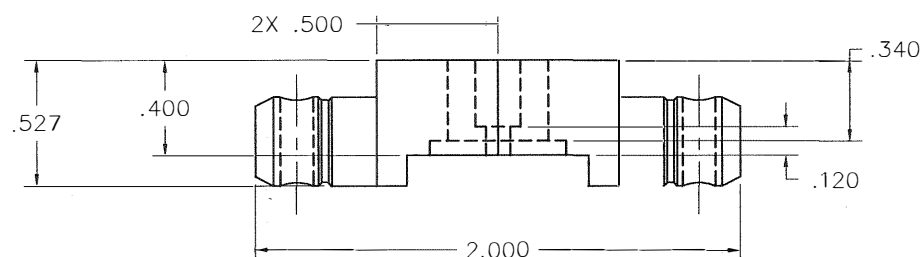



REVISIONS				
REV. SYM.	E.C.O. NUMBER	DESCRIPTION	BY DATE	APP'D DATE
1		ORIGINAL RELEASE	LME 10/6/86	DJR 10/7/86



UNCONTROLLED DOCUMENT
WILL NOT BE UPDATED

DIMENSIONS IN INCHES - UNLESS OTHERWISE SPECIFIED

<u>RESTRICTED & CONFIDENTIAL</u> CONFIDENTIAL PROPERTY OF DANIELS MANUFACTURING CORP. NOT TO BE DISCLOSED TO OTHERS, REPRODUCED OR USED FOR ANY OTHER PURPOSE, EXCEPT AS AUTHORIZED IN WRITING BY DANIELS MANUFACTURING. MUST BE RETURNED TO DANIELS MANUFACTURING CORP. ON COMPLETION OF ORDER OR OTHER PURPOSE FOR WHICH LENT.	<div>MATERIAL</div> <div>HEAT TREAT</div>	ITEM	PART NO.	QTY.	DESCRIPTION/REMARKS		
		DRN.	LME	DATE 10/6/86	 DANIELS MANUFACTURING CORP. ORLANDO, FLORIDA CAGE 11851		
		CHK'D.	MGS	DATE 10/7/86			
		APP'D.	DJR	DATE 10/7/86			
		APP'D.		DATE			
DO NOT SCALE DRAWING	<div>FINISH</div>	NOTE:			DIE SET ENVELOPE DRAWING		
		THIS DRAWING IS AN OUTLINE DRAWING OF THE RESPECTIVE DMC PART NUMBER INDICATED. ACTUAL DMC PART NUMBER IS DRAWING NUMBER WITHOUT THE "-ENV" SUFFIX.			WHERE USED:		
		SIZE B	SCALE 2/1	CAD P/N Y128-ENV	SHEET 1	OF 1	
		POSTING	DWG. NO. Y128-ENV		REV. 1		

Mouser Electronics

Authorized Distributor

Click to View Pricing, Inventory, Delivery & Lifecycle Information:

[Daniels Manufacturing:](#)

[Y128](#)