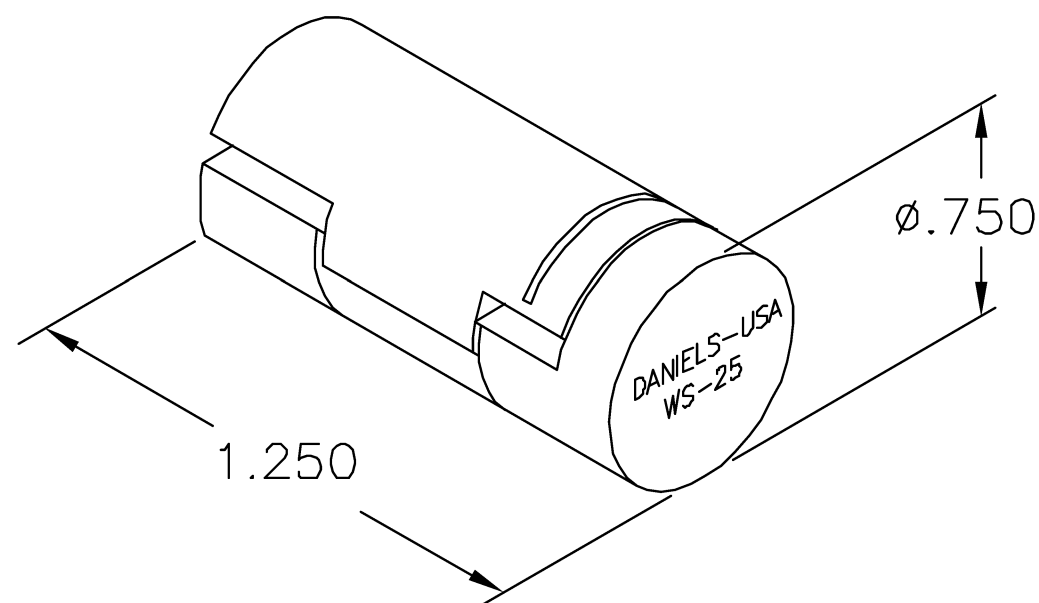



UNCONTROLLED DOCUMENT
WILL NOT BE UPDATED

REVISIONS				
REV. SYM.	E.C.O. NUMBER	DESCRIPTION	BY DATE	APP'D DATE
1		ORIGINAL RELEASE	JMC 5-8-03	JWJ 5-8-03



1. KINGS EQUIVALENT KTJ-80.

NOTES:

<p><u>RESTRICTED & CONFIDENTIAL</u></p> <p>CONFIDENTIAL PROPERTY OF DANIELS MANUFACTURING CORP. NOT TO BE DISCLOSED TO OTHERS, REPRODUCED OR USED FOR ANY OTHER PURPOSE, EXCEPT AS AUTHORIZED IN WRITING BY DANIELS MANUFACTURING. MUST BE RETURNED TO DANIELS MANUFACTURING CORP. ON COMPLETION OF ORDER OR OTHER PURPOSE FOR WHICH LENT.</p> <p>DO NOT SCALE DRAWING</p>	ITEM	PART NO.	QTY.	DESCRIPTION/REMARKS	
	DRN.	JMC	DATE 5-8-03	 DANIELS MANUFACTURING CORP. ORLANDO, FLORIDA CAGE 11851	
	CHK'D.	JWJ	DATE 5-8-03		
	APP'D.		DATE	TITLE JACKET TRIM JIG ENVELOPE DRAWING	
	APP'D.		DATE		
NOTE: THIS DRAWING IS AN OUTLINE DRAWING OF THE RESPECTIVE DMC PART NUMBER INDICATED. ACTUAL DMC PART NUMBER IS DRAWING NUMBER WITHOUT THE "-ENV" SUFFIX.				WHERE USED:	
SIZE A		SCALE NTS	CAD P/N WS-25-ENV	SHEET 1	OF 1
POSTING			DWG. NO. WS-25-ENV	REV. 1	

Mouser Electronics

Authorized Distributor

Click to View Pricing, Inventory, Delivery & Lifecycle Information:

[Daniels Manufacturing:](#)

[WS-25](#)