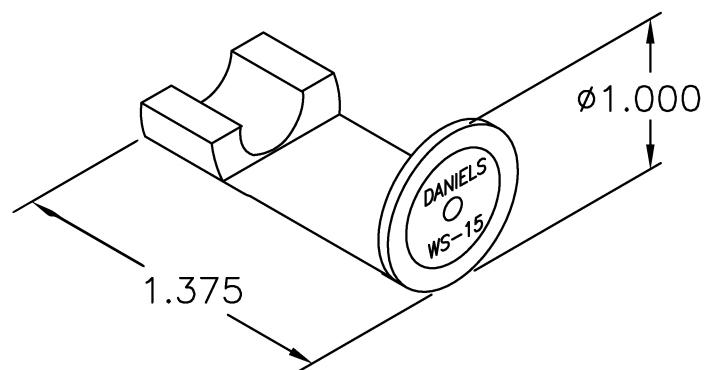


UNCONTROLLED DOCUMENT  
WILL NOT BE UPDATED

REVISIONS				
REV. SYM.	E.C.O. NUMBER	DESCRIPTION	BY DATE	APP'D DATE
1		ORIGINAL RELEASE	JWJ 12/11/03	RRR 12/11/03



1. KINGS EQUIVALENT KTD-81.

NOTES:

<p>RESTRICTED &amp; CONFIDENTIAL</p> <p>CONFIDENTIAL PROPERTY OF DANIELS MANUFACTURING CORP. NOT TO BE DISCLOSED TO OTHERS, REPRODUCED OR USED FOR ANY OTHER PURPOSE, EXCEPT AS AUTHORIZED IN WRITING BY DANIELS MANUFACTURING. MUST BE RETURNED TO DANIELS MANUFACTURING CORP. ON COMPLETION OF ORDER OR OTHER PURPOSE FOR WHICH LENT.</p>	ITEM	PART NO.	QTY.	DESCRIPTION/REMARKS
	DRN.	J. JOYCE	DATE	12/11/03
	CHK'D.	RRR	DATE	12/11/03
	APP'D.		DATE	
	APP'D.		DATE	
DO NOT SCALE DRAWING	NOTE:		TITLE	
	THIS DRAWING IS AN OUTLINE DRAWING OF THE RESPECTIVE DMC PART NUMBER INDICATED. ACTUAL DMC PART NUMBER IS DRAWING NUMBER WITHOUT THE "-ENV" SUFFIX.		DIELECTRIC TRIM JIG ENVELOPE DRAWING	
	WHERE USED:		DANIELS MANUFACTURING CORP. ORLANDO, FLORIDA CAGE 11851	
	SIZE	SCALE	CAD P/N	SHEET OF
A	NTS	WS-15-ENV	1 1	
POSTING		DWG. NO.	REV.	
		WS-15-ENV	1	

# Mouser Electronics

Authorized Distributor

Click to View Pricing, Inventory, Delivery & Lifecycle Information:

[Daniels Manufacturing:](#)

[WS-15](#)