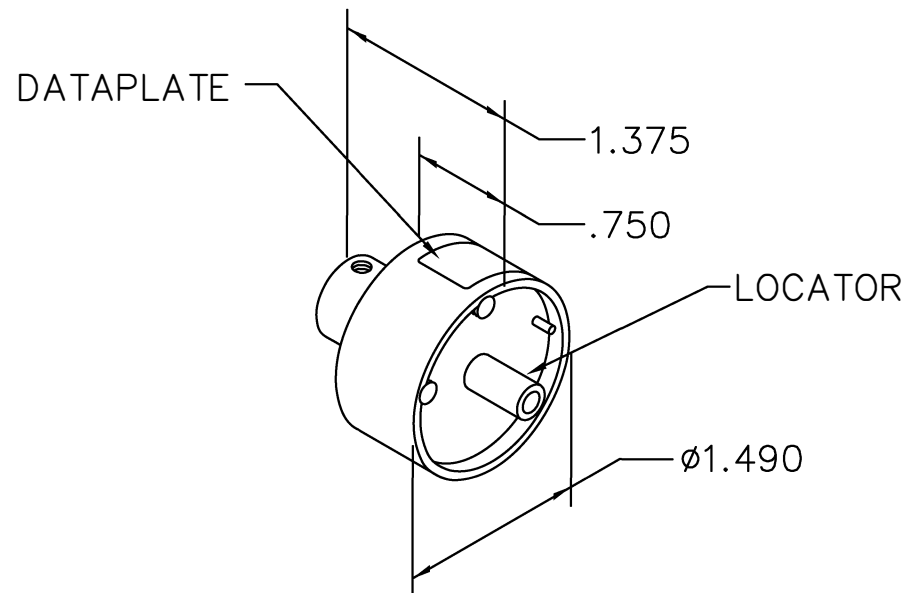


REVISIONS				
REV. SYM.	E.C.O. NUMBER	DESCRIPTION	BY DATE	APP'D DATE
1		ORIGINAL RELEASE	JWS 8-4-86	AAM 8-4-86

**UNCONTROLLED DOCUMENT
WILL NOT BE UPDATED**



REF. CONTACTS	CONTACT SIZE	26	24	22	20	WIRE SIZE
HE621-P-16-S-20-1 HE621-S-16-S-20-1	20		2	3	4	SELECTOR NO.
HE621-P-16-S-24-1 HE621-S-16-S-24-1	24	2	4			

DATAPLATE

LOCATOR	
HOLE DIMENSIONS	ADDITIONAL FEATURES
Ø.113 ▽.780	

RESTRICTED & CONFIDENTIAL

CONFIDENTIAL PROPERTY OF DANIELS MANUFACTURING CORP. NOT TO BE DISCLOSED TO OTHERS, REPRODUCED OR USED FOR ANY OTHER PURPOSE, EXCEPT AS AUTHORIZED IN WRITING BY DANIELS MANUFACTURING. MUST BE RETURNED TO DANIELS MANUFACTURING CORP. ON COMPLETION OF ORDER OR OTHER PURPOSE FOR WHICH LENT.

DO NOT SCALE DRAWING

DRN.	JWS	DATE 8-4-86
CHK'D.	MGS	DATE 8-15-86
APP'D.	AAM	DATE 8-15-86
APP'D.		DATE

NOTE:
THIS DRAWING IS AN OUTLINE DRAWING OF THE RESPECTIVE DMC PART NUMBER INDICATED. ACTUAL DMC PART NUMBER IS DRAWING NUMBER WITHOUT THE "-ENV" SUFFIX.



DANIELS MANUFACTURING CORP.
ORLANDO, FLORIDA
CAGE 11851

TITLE
**ENVELOPE DRAWING
SINGLE POSITION HEAD**

WHERE USED: AF8

SIZE A	SCALE NTS	CAD P/N TP616-ENV	SHEET 1	OF 1
POSTING		DWG. NO. TP616-ENV	REV. 1	

Mouser Electronics

Authorized Distributor

Click to View Pricing, Inventory, Delivery & Lifecycle Information:

[Daniels Manufacturing:](#)

[TP616](#)