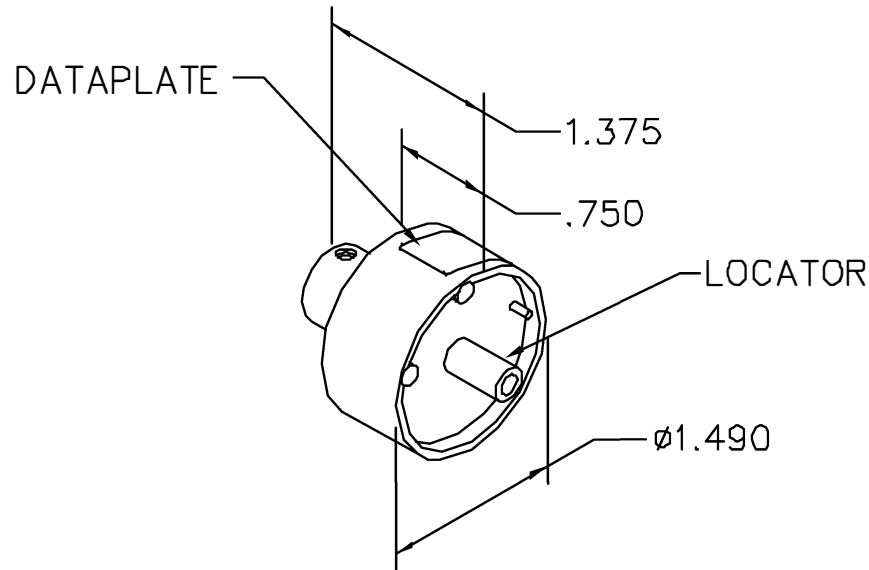


| REVISIONS | | | | |
|-----------|---------------|-------------|----------------|----------------|
| REV. SYM. | E.C.O. NUMBER | DESCRIPTION | BY DATE | APP'D DATE |
| 2 | | ADDED NOTE | AAM 9-14-01 | RRR 9-14-01 |

**UNCONTROLLED DOCUMENT
WILL NOT BE UPDATED**



| AMP CONTACT | 14 | 12 | 10 | 8 | WIRE SIZE |
|---------------|----|----|----|---|----------------------|
| 212007/212008 | 1 | 1 | | | SEL. NO. (M300BT) |
| 211159/211161 | | | 6 | 7 | |

DATAPLATE

NOTE: THE TP1151 POSITIONER IS FUNCTIONALLY EQUIVALENT TO THE SP689, AND IS THE PREFERRED DESIGN BECAUSE IT OFFERS GREATER CONSISTENCY OF THE CRIMP LOCATION, AND ESPECIALLY BECAUSE OF THE IMPROVED STABILITY OF THE CONTACTS WHEN LOADED INTO THE TOOL FOR CRIMPING.

| LOCATOR | |
|-----------------|---------------------|
| HOLE DIMENSIONS | ADDITIONAL FEATURES |
| Ø.145 ▽.590 | └┐ Ø.250 ▽.295 |
| | └┐ Ø.196 ▽.582 |

RESTRICTED & CONFIDENTIAL

CONFIDENTIAL PROPERTY OF DANIELS MANUFACTURING CORP. NOT TO BE DISCLOSED TO OTHERS, REPRODUCED OR USED FOR ANY OTHER PURPOSE, EXCEPT AS AUTHORIZED IN WRITING BY DANIELS MANUFACTURING. MUST BE RETURNED TO DANIELS MANUFACTURING CORP. ON COMPLETION OF ORDER OR OTHER PURPOSE FOR WHICH LENT.

DO NOT SCALE DRAWING

| | |
|----------------------|-----------------|
| DRN. A. MOO-YOUNG | DATE 3-10-99 |
| CHK'D. RRR | DATE 3-10-99 |
| APP'D. | DATE |
| APP'D. | DATE |



DANIELS MANUFACTURING CORP.
ORLANDO, FLORIDA
CAGE 11851

TITLE
**ENVELOPE DRAWING
SINGLE POSITION HEAD**

WHERE USED: M300BT

| | | | | |
|-----------|--------------|-----------------------|------------|---------|
| SIZE A | SCALE NTS | CAD P/N TP1151-ENV | SHEET 1 | OF 1 |
| POSTING | | P/N TP1151-ENV | REV. 2 | |

Mouser Electronics

Authorized Distributor

Click to View Pricing, Inventory, Delivery & Lifecycle Information:

[Daniels Manufacturing:](#)

[TP1151](#)