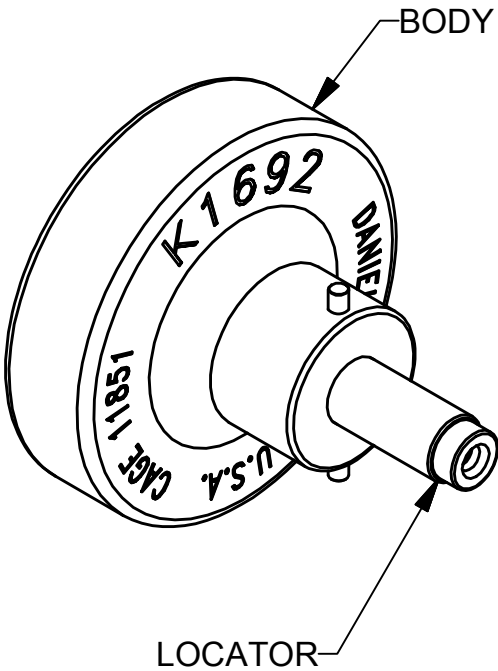
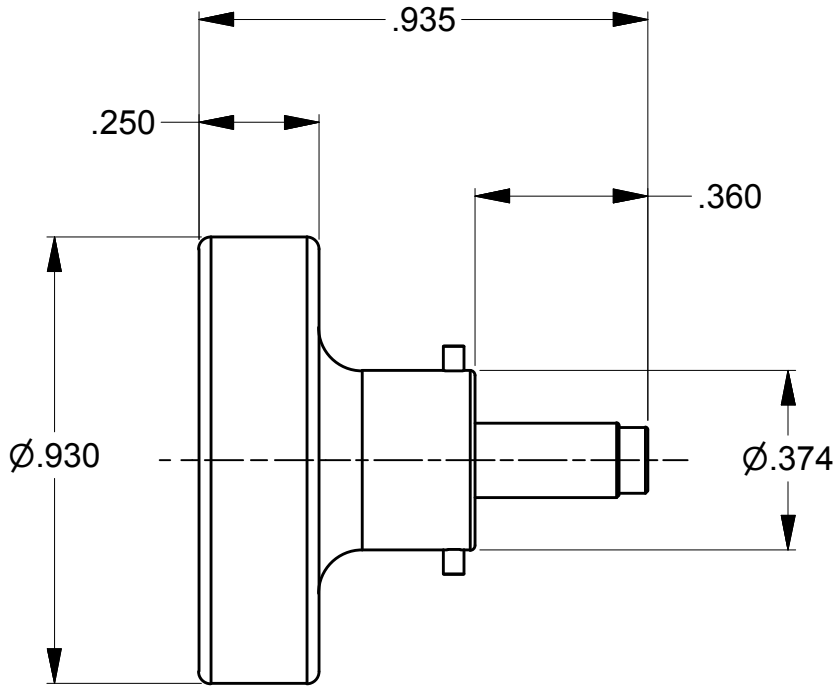
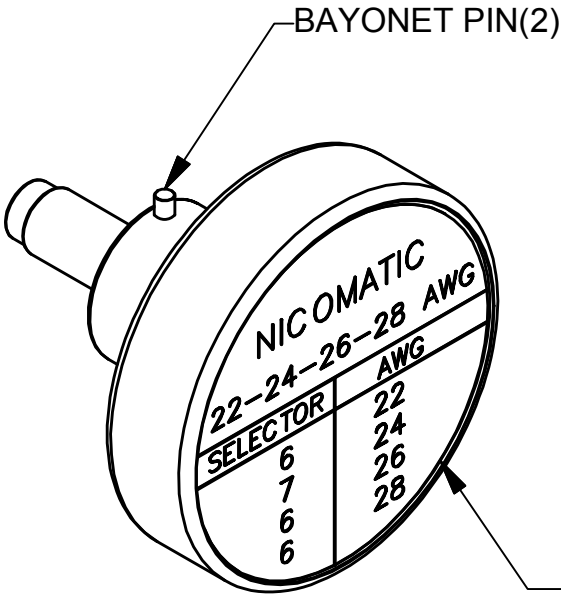


REVISIONS				
REV SYM	ECO NUMBER	DESCRIPTION	BY DATE	APP'D DATE
1	20414	ORIGINAL RELEASE	TD 01-07-08	
2	23135	LOCATOR CHANGE	TD 10-25-13	




UNCONTROLLED DOCUMENT
WILL NOT BE UPDATED

DIMENSIONS IN INCHES - UNLESS OTHERWISE SPECIFIED



NICOMATIC	
22-24-26-28 AWG	
SELECTOR	AWG
6	22
7	24
6	26
6	28

LOCATOR	
HOLE DIMENSIONS	ADDITIONAL FEATURES
Ø.053	└┐Ø.059
▽.197	▽.040

<div>RESTRICTED & CONFIDENTIAL</div> <div>CONFIDENTIAL PROPERTY OF DANIELS MANUFACTURING CORP. NOT TO BE DISCLOSED TO OTHERS, REPRODUCED OR USED FOR ANY OTHER PURPOSE EXCEPT AS AUTHORIZED IN WRITING BY DANIELS MANUFACTURING. MUST BE RETURNED TO DANIELS MANUFACTURING CORP. ON COMPLETION OF ORDER OR OTHER PURPOSE FOR WHICH LENT.</div> <div>CREATED FROM AN INVENTOR MODEL. CHANGES MUST BE REFLECTED IN THE 3D PART</div> <div>DO NOT SCALE DRAWING</div>		<div>MATERIAL</div> <div>HEAT TREAT</div> <div>FINISH</div>	<div>ITEM</div> <div>DRN. <i>Tony Dilworth</i></div> <div>CHK'D.</div> <div>APP'D.</div> <div>APP'D.</div> <div>NOTE: THIS DRAWING IS AN OUTLINE DRAWING OF THE RESPECTIVE DMC PART NUMBER INDICATED. ACTUAL DMC PART NUMBER IS DRAWING NUMBER WITHOUT THE "ENV" SUFFIX</div>	<div>PART No.</div> <div>DATE 01-07-08</div> <div>DATE</div> <div>DATE</div>	<div>QTY.</div>	<div>DESCRIPTION/REMARKS</div> <div><div></div><div>DANIELS MANUFACTURING CORP ORLANDO, FLORIDA CAGE 11851</div></div> <div>TITLE POSITIONER ENVELOPE DRAWING</div> <div>WHERE USED: AFM8</div> <div><div>SIZE B</div><div>SCALE 2.5X</div><div>CAD P/N K1692-ENV</div><div>SHEET OF 1 1</div></div> <div><div>POSTING</div><div>P/N K1692-ENV</div><div>REV. 2</div></div>	
--	--	---	---	--	-----------------	---	--

Mouser Electronics

Authorized Distributor

Click to View Pricing, Inventory, Delivery & Lifecycle Information:

[Daniels Manufacturing:](#)

[K1692](#)