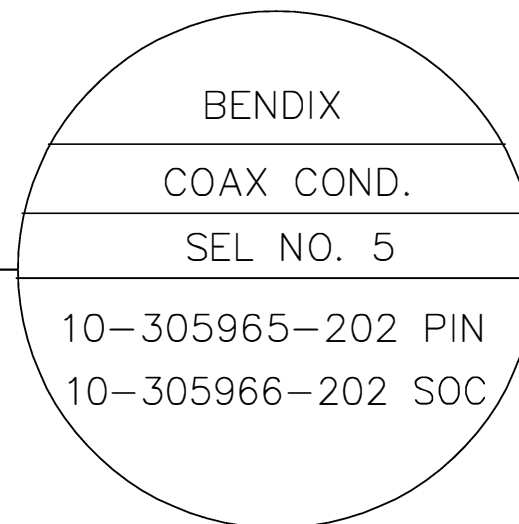


REVISIONS				
REV. SYM.	E.C.O. NUMBER	DESCRIPTION	BY DATE	APP'D DATE
1		ORIGINAL RELEASE	TD 12-23-09	


**UNCONTROLLED DOCUMENT  
WILL NOT BE UPDATED**



**NOTES:**

1. FOR USE WITH DANIELS CRIMP TOOLS  
ACCOMMODATING "K" SERIES POSITIONERS

LOCATOR	
HOLE DIMENSIONS	ADDITIONAL FEATURES
$\phi .089$ $\nabla .505$	

<b>RESTRICTED &amp; CONFIDENTIAL</b>		DRN. <i>Tony Dilworth</i> CHK'D.	DATE 12-23-09 DATE	 <b>DANIELS MANUFACTURING CORP.</b> ORLANDO, FLORIDA CAGE 11851
CONFIDENTIAL PROPERTY OF DANIELS MANUFACTURING CORP. NOT TO BE DISCLOSED TO OTHERS, REPRODUCED OR USED FOR ANY OTHER PURPOSE, EXCEPT AS AUTHORIZED IN WRITING BY DANIELS MANUFACTURING. MUST BE RETURNED TO DANIELS MANUFACTURING CORP. ON COMPLETION OF ORDER OR OTHER PURPOSE FOR WHICH LENT.		APP'D.	DATE	
		APP'D.	DATE	
<b>DO NOT SCALE DRAWING</b>		<b>NOTE:</b> THIS DRAWING IS AN OUTLINE DRAWING OF THE RESPECTIVE DMC PART NUMBER INDICATED. ACTUAL DMC PART NUMBER IS DRAWING NUMBER WITHOUT THE "-ENV" SUFFIX.		<b>POSITIONER ENVELOPE DRAWING</b>  WHERE USED: AFM8 SIZE   SCALE   CAD P/N   SHEET   OF A   NTS   K11-ENV   1   1
		POSTING	DWG. NO. K11-ENV	REV. 1

# Mouser Electronics

Authorized Distributor

Click to View Pricing, Inventory, Delivery & Lifecycle Information:

[Daniels Manufacturing:](#)

[K11](#)