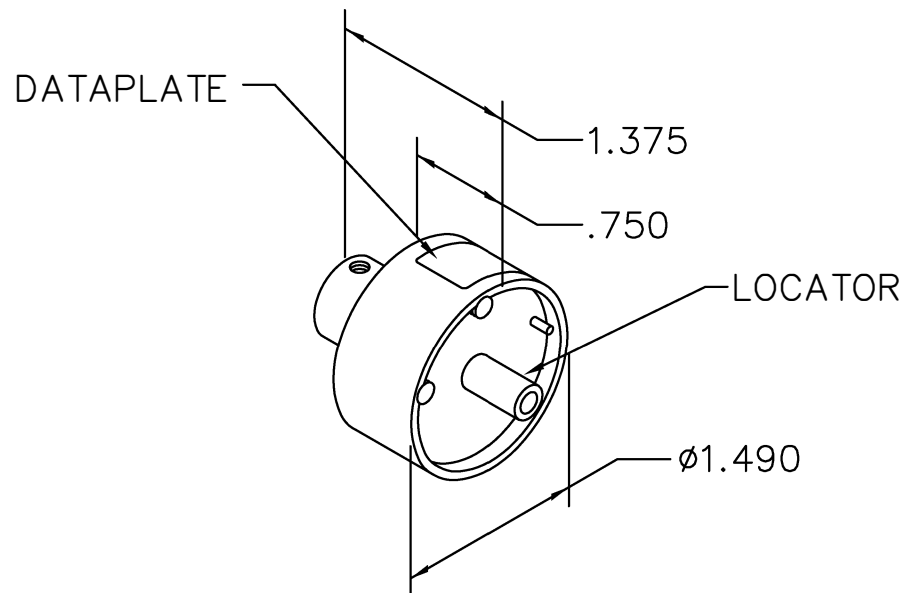


REVISIONS				
REV. SYM.	E.C.O. NUMBER	DESCRIPTION	BY DATE	APP'D DATE
1		ORIGINAL RELEASE	AAM 11-3-99	RRR 11-3-99
2		ADDED SABRITEC P/N	AAM 1-25-00	RRR 1-25-00

**UNCONTROLLED DOCUMENT
WILL NOT BE UPDATED**



#12 TRIAX INTERIM CONTACT
SOCKET CONTACT P/N JN1104S75T
SABRITEC P/N 018712-2016

USE WITH GS212 TOOL

DATAPLATE

LOCATOR	
HOLE DIMENSIONS	ADDITIONAL FEATURES
Ø.040 ▽1.15 MIN.	└┐ Ø.082 ▽.020

RESTRICTED & CONFIDENTIAL

CONFIDENTIAL PROPERTY OF DANIELS MANUFACTURING CORP. NOT TO BE DISCLOSED TO OTHERS, REPRODUCED OR USED FOR ANY OTHER PURPOSE, EXCEPT AS AUTHORIZED IN WRITING BY DANIELS MANUFACTURING. MUST BE RETURNED TO DANIELS MANUFACTURING CORP. ON COMPLETION OF ORDER OR OTHER PURPOSE FOR WHICH LENT.

DO NOT SCALE DRAWING

DRN. A. MOO-YOUNG	DATE 11-3-99
CHK'D. RRR	DATE 11-3-99
APP'D.	DATE
APP'D.	DATE

NOTE:
THIS DRAWING IS AN OUTLINE DRAWING OF THE RESPECTIVE DMC PART NUMBER INDICATED. ACTUAL DMC PART NUMBER IS DRAWING NUMBER WITHOUT THE "-ENV" SUFFIX.



DANIELS MANUFACTURING CORP.
ORLANDO, FLORIDA
CAGE 11851

TITLE
**ENVELOPE DRAWING
SINGLE POSITION HEAD**

WHERE USED: GS212

SIZE	SCALE	CAD P/N	SHEET	OF
A	NTS	GP1331-ENV	1	1
POSTING		DWG. NO.	REV.	
		GP1331-ENV	2	

Mouser Electronics

Authorized Distributor

Click to View Pricing, Inventory, Delivery & Lifecycle Information:

[Daniels Manufacturing:](#)

[GP1331](#)