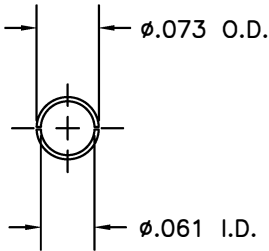
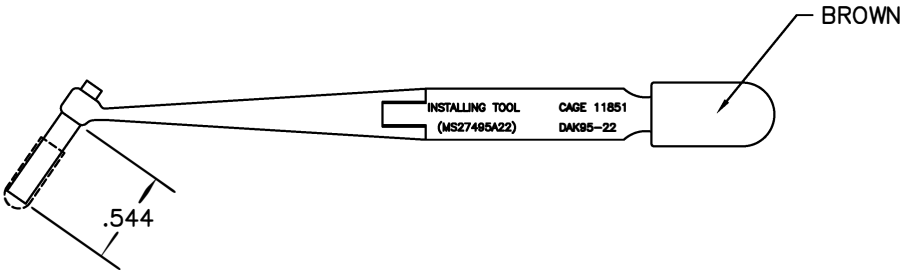
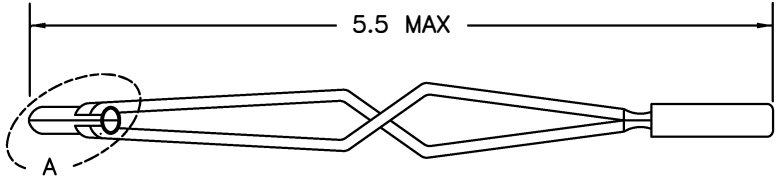



REVISIONS				
REV. SYM.	E.C.O. NUMBER	DESCRIPTION	BY DATE	APP'D DATE
1		ORIGINAL RELEASE	LGV 6/4/90	JS 6/90



VIEW A



RESTRICTED & CONFIDENTIAL		ITEM	PART NO.	QTY.	DESCRIPTION/REMARKS	
CONFIDENTIAL PROPERTY OF DANIELS MANUFACTURING CORP. NOT TO BE DISCLOSED TO OTHERS, REPRODUCED OR USED FOR ANY OTHER PURPOSE, EXCEPT AS AUTHORIZED IN WRITING BY DANIELS MANUFACTURING. MUST BE RETURNED TO DANIELS MANUFACTURING CORP. ON COMPLETION OF ORDER OR OTHER PURPOSE FOR WHICH LENT.		DRN.	LV	DATE 6/4/90	<div> DANIELS MANUFACTURING CORP. ORLANDO, FLORIDA CAGE 11851</div> <div>TITLE INSTALLING TOOL #22 ENVELOPE DRAWING (MS27495A22)</div>	
		CHK'D.	JS	DATE 6/6/90		
		APP'D.	RSS	DATE 6/6/90		
		APP'D.	AAM	DATE 6/6/90		
		NOTE:				
DO NOT SCALE DRAWING		THIS DRAWING IS AN OUTLINE DRAWING OF THE RESPECTIVE DMC PART NUMBER INDICATED. ACTUAL DMC PART NUMBER IS DRAWING NUMBER WITHOUT THE "-ENV" SUFFIX.			WHERE USED:	
		SIZE B	SCALE NTS	CAD P/N DAK95-22-ENV	SHEET 1	OF 1
		POSTING		DWG. NO. DAK95-22-ENV	REV. 1	

Mouser Electronics

Authorized Distributor

Click to View Pricing, Inventory, Delivery & Lifecycle Information:

[Daniels Manufacturing:](#)

[DAK95-22](#)