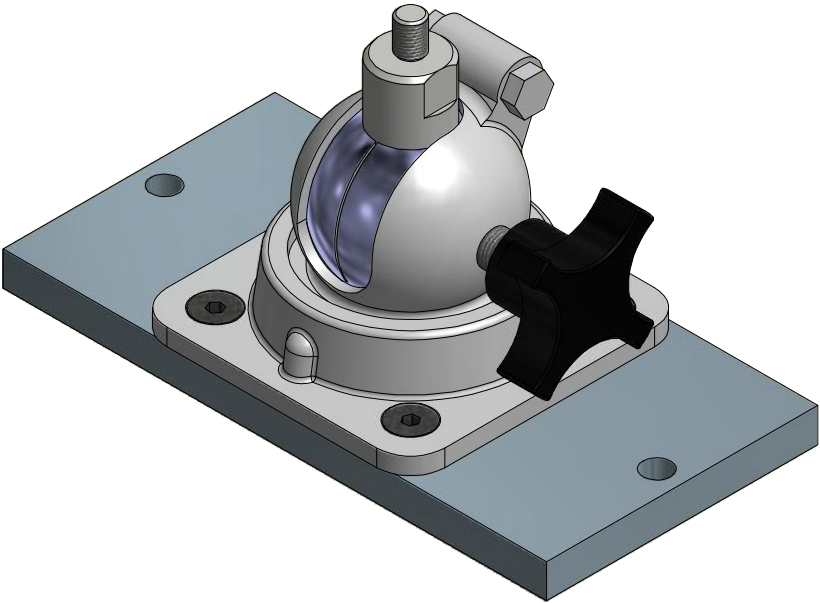
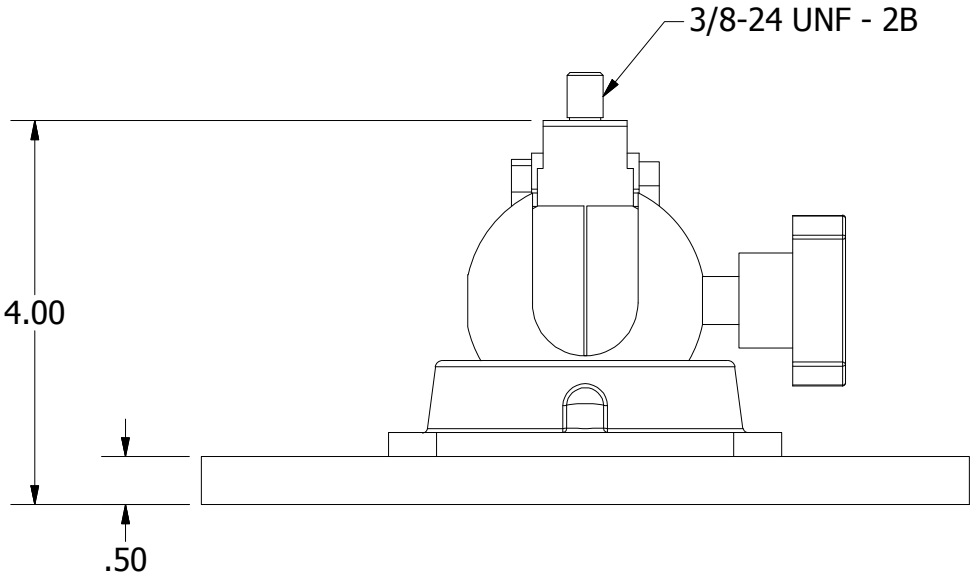
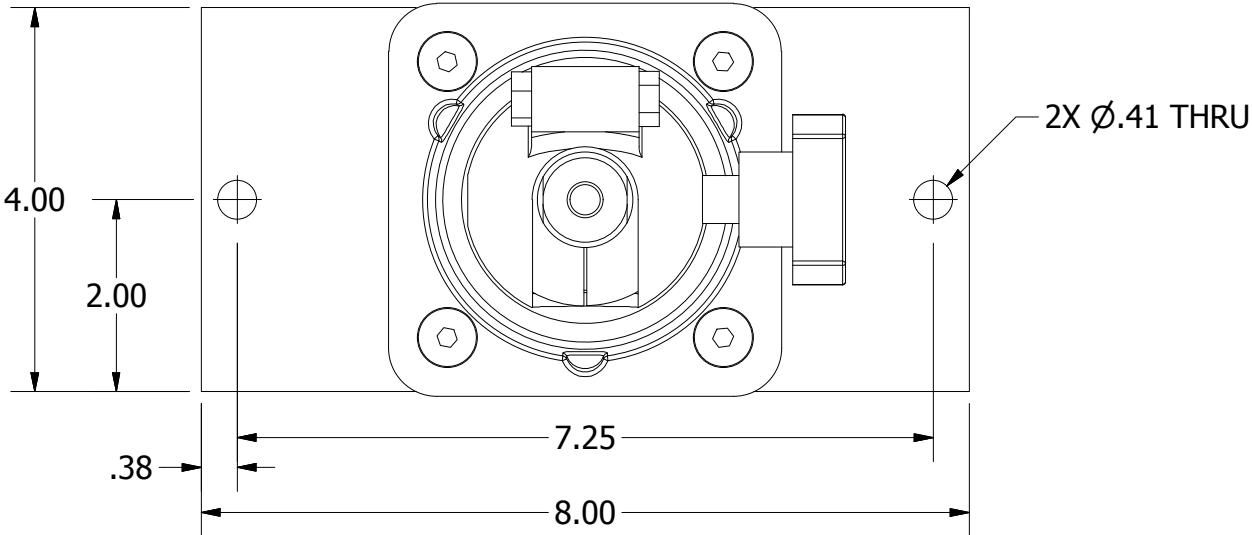


USERS MUST ASSURE THEY ARE  
USING THE CORRECT REVISION.

REVISION HISTORY						
REV	ECO NO.	DESCRIPTION	BY	DATE	APP'D BY	DATE
1		ORIGINAL RELEASE	K. KOONS	2/24/2015		




ISOMETRIC VIEW  
SCALE 1 / 2

**UNCONTROLLED DOCUMENT  
WILL NOT BE UPDATED**

**DIMENSIONS IN INCHES - UNLESS OTHERWISE SPECIFIED**

NOTES:

<b>RESTRICTED &amp; CONFIDENTIAL</b> CONFIDENTIAL PROPERTY OF DANIELS MANUFACTURING CORP. NOT TO BE DISCLOSED TO OTHERS. REPRODUCTION OR USED FOR ANY OTHER PURPOSE EXCEPT AS AUTHORIZED IN WRITING BY DANIELS MANUFACTURING. MUST BE RETURNED TO DANIELS MANUFACTURING CORP. ON COMPLETION OF ORDER OR PURPOSES FOR WHICH LENT.	
CREATED FROM AN INVENTOR MODEL. CHANGES MUST BE REFLECTED IN THE 3D PART	
DO NOT SCALE DRAWING	

MATERIAL	ITEM	PART NO.	QTY.	DESCRIPTION / REMARKS		
NA	DRN. TONY DILWORTH	DATE 12/1/2009		DANIELS MANUFACTURING CORP. ORLANDO, FLORIDA CAGE 11851		
	CHK'D. KIRK C KOONS	DATE 2/24/2015				
HEAT TREAT	NOTE:  THIS DRAWING IS AN OUTLINE DRAWING OF THE RESPECTIVE DMC PART NUMBER INDICATED. ACTUAL DMC PART NUMBER IS CAD PART NUMBER WITHOUT THE "-ENV" SUFFIX		TITLE  ADJUSTABLE BASE MOUNT ENVELOPE DRAWING			
FINISH			WHERE USED:			
NA			SIZE	SCALE	CAD P/N	SHEET
			B	1 / 2	BM-2A-ENV	1 OF 1
		DWG. NO.			REV.	
		BM-2A			1	

# Mouser Electronics

Authorized Distributor

Click to View Pricing, Inventory, Delivery & Lifecycle Information:

[Daniels Manufacturing:](#)

[BM-2A](#)