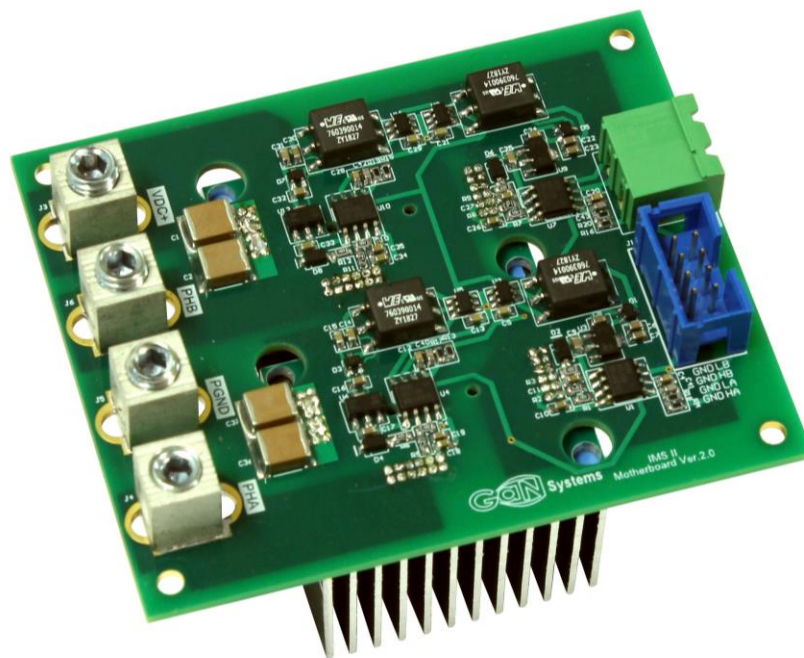


IMS 2 Evaluation Platform

Technical Manual

GSP665HPMB-EVBIMS2
GSP66508HB-EVBIMS2
GSP66516HB-EVBIMS2



Visit www.gansystems.com for the latest version of this technical manual.

DANGER

DO NOT TOUCH THE BOARD WHEN IT IS ENERGIZED AND ALLOW ALL COMPONENTS TO DISCHARGE COMPLETELY PRIOR HANDLING THE BOARD.

HIGH VOLTAGE CAN BE EXPOSED ON THE BOARD WHEN IT IS CONNECTED TO POWER SOURCE. EVEN BRIEF CONTACT DURING OPERATION MAY RESULT IN SEVERE INJURY OR DEATH.

Please sure that appropriate safety procedures are followed. This evaluation kit is designed for **engineering evaluation in a controlled lab environment and should be handled by qualified personnel ONLY**. Never leave the board operating unattended.

**WARNING**

Some components can be hot during and after operation. **There are NO built-in electrical or thermal protection on this evaluation kit**. The operating voltage, current and component temperature should be monitored closely during operation to prevent device damage.

**CAUTION**

This product contains parts that are susceptible to damage by electrostatic discharge (ESD). Always follow ESD prevention procedures when handling the product.

Contents

1	Overview	5
1.1	Introduction	5
1.2	IMS 2 Evaluation Platform Overview.....	6
1.2.1	Technical Description.....	6
1.2.2	IMS Board thermal design	7
1.3	IMS 2 Half Bridge Board Design.....	9
1.4	IMS 2 EVB Mother Board	10
1.4.1	Gate Driver Circuit	11
1.4.2	5V input.....	11
1.4.3	Temperature monitoring holes	11
1.4.4	External PWM Signals Input.....	12
1.4.5	Installation of IMS 2 Half Bridge Power Board	12
1.4.6	DC link decoupling capacitors.....	12
1.4.7	Operation modes	13
2	Test Results.....	14
2.1	Double pulse test (GSP665HPMB-EVBIMS2 + GSP66508HB-EVBIMS2)	14
2.2	Full power emulation test (GSP665HPMB-EVBIMS2 + GSP66508HB-EVBIMS2)	15
3	Appendix.....	17
3.1	IMS 2 Half Bridge Power Board.....	17
3.2	IMS 2 EVB Mother board - GSP665HPMB-EVBIMS2.....	19

List of Figures

Figure 1 IMS 2 EVB board and IMS 2 half bridge power module with heatsink	5
Figure 2 - GS66516B and GS66508B GaNPX® packaged E-HEMTs.....	6
Figure 3 Cross-section view of a single layer IMS board	7
Figure 4 Comparison of Junction to Heatsink thermal resistance (R_{thJ-HS}) (Estimated based on GS66516B) .	8
Figure 5 IMS 2 half bridge power board (GSP66508HB-EVBIMS2)	9
Figure 6 Circuit block diagram of IMS 2 EVB board.....	10
Figure 7 GSP665HPMB-EVBIMS2	10
Figure 8 Gate driver circuit.....	11
Figure 9 External PWM signals connector	12
Figure 10 - Cross section view of IMS assembly showing the power Loop path	12
Figure 11 Double pulse test setup	14
Figure 12 Double pulse test waveforms (400V/30A).....	14

List of Tables

Table 1 Ordering configuration and part numbers	6
Table 2 Part numbers and Description.....	6
Table 3 Performance comparison of 3 thermal design options for SMT power devices.....	8
Table 4 Evaluation Platform Configurations	13

1 Overview

1.1 Introduction

A frequent challenge for power designers is to engineer a product that has excellent power density and reduced cost of the system simultaneously.

This IMS evaluation platform demonstrates an effective way to improve heat transfer, to increase power density and reduce system cost. An Insulated Metal Substrate PCB (IMS PCB) is used to cool GaN Systems' bottom-side cooled power transistors. An IMS PCB is also known as Metal Core/Aluminum PCB.

Examples of applications that have successfully used this approach include:

- **Automotive:** 3.3kW-22kW on board charger, DC/DC, 3- Φ inverter, high power wireless charger
- **Industrial:** 3-7kW Photovoltaic Inverter and Energy Storage System (ESS), Motor Drive / VFD
- **Server/Datacenter:** 3kW Server ACDC power supply.
- **Consumer:** Residential Energy Storage System (ESS)

This evaluation platform consists of two parts: the IMS 2 EVB board (mother board) and the IMS 2 half bridge power board, as show in Figure 1. The IMS 2 half bridge power board is available in 2 power levels: 3kW and 6kW.



A suitable heatsink is included for lower power applications. For higher power applications additional heatsinking may be required. To prevent device damage, ensure adequate heatsinking through design and by monitoring the component temperatures during operation.



To assemble a heatsink, apply thermal grease to the heatsink / IMS board interface before screwing the units together. Enough thermal grease should be applied so that a small amount extrudes on all four sides as the screws are tightened. Wipe the assembly clean.

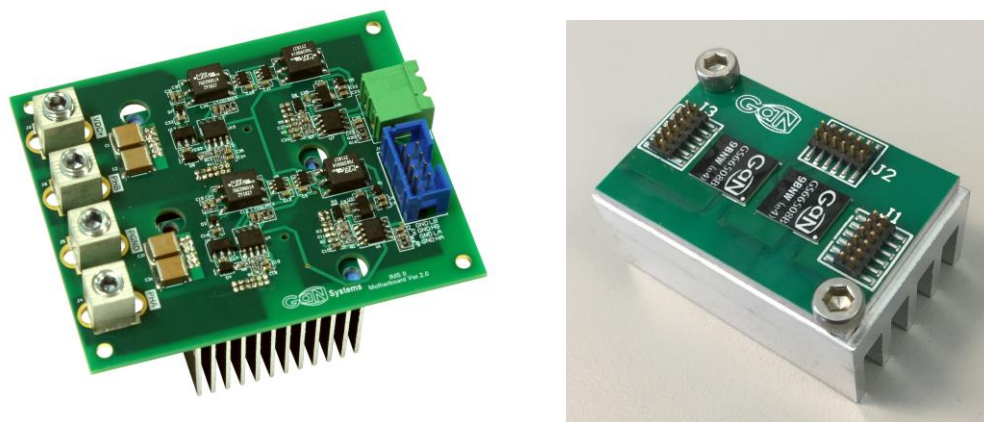


Figure 1 IMS 2 EVB mother board and IMS 2 half bridge power module with heatsink

With these building blocks, the evaluation platform can be purchased in 4 different configurations: low power and high power, half bridge and full bridge. Table 1 lists the ordering options.

Table 1 Ordering configuration and part numbers

CONFIGURATION	IMS 2 HALF BRIDGE MODULE	IMS 2 EVB Mother Board
3 kW Half Bridge	QTY 1 - GSP66508HB-EVBIMS2	QTY 1: GSP665HPMB-EVBIMS2
6 kW Half Bridge	QTY 1 - GSP66516HB-EVBIMS2	
3 kW Full Bridge	QTY 2 - GSP66508HB-EVBIMS2	
6 kW Full Bridge	QTY 2 - GSP66516HB-EVBIMS2	

Table 2 Part numbers and Description

PART NUMBER	DESCRIPTION	GaN E-HEMT
GSP665HPMB-EVBIMS2	Optimized Dual HB Gate Driver Motherboard with isolated driver and PSU for use with GSP66516HB-EVBIMS2 or GSP66508HB-EVBIMS2 half bridge boards	N/A
GSP66508HB-EVBIMS2	Optimized IMS 2 Half Bridge based on GS66508B GaNPX® bottom-cooled E-HEMTs	GS66508B
GSP66516HB-EVBIMS2	Optimized IMS 2 Half Bridge based on GS66516B GaNPX® bottom-cooled E-HEMTs	GS66516B

1.2 IMS 2 Evaluation Platform Overview

1.2.1 Technical Description

Using this platform, power designers can evaluate the performance of GaN Systems' E-HEMTs (Enhancement mode High Electron Mobility Transistors) in high power, high efficiency applications. The IMS 2 half bridge power board is populated with GaN Systems' GS66516B (bottom-side cooled E-HEMT, rated at 650 V / 25 mΩ) or GS66508B (bottom-side cooled E-HEMT, rated at 650 V / 50 mΩ). The embedded GaNPX® SMD package has the following features:

- Large power source/thermal pad for improved thermal dissipation.
- Bottom-side cooled packaging for conventional PCB or advanced IMS/Cu inlay thermal design.
- Ultra-low inductance for high frequency switching.

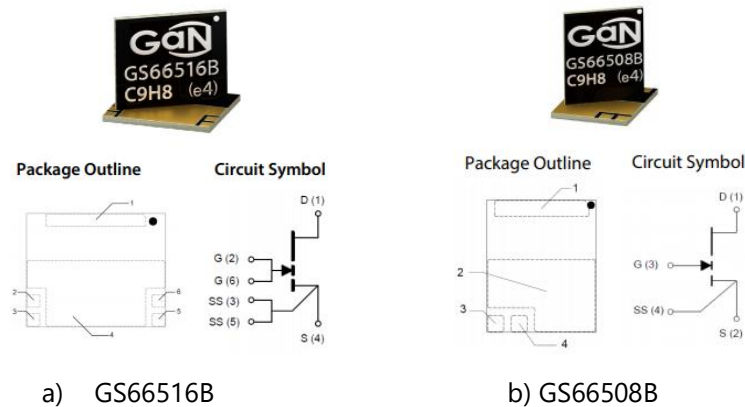


Figure 2 - GS66516B and GS66508B GaNPX® packaged E-HEMTs

The IMS 2 half bridge power board is designed for users to gain hands-on experience in the following ways:

- Evaluate the GaN E-HEMT performance in any half bridge based topology, over a range of operating conditions. This can be done using either the accompanying power motherboard (P/N: GSP665HPMB-EVBIMS2) or with the users' own board for in-system prototyping.
- Use as a thermal and electrical design reference of the GS66516B or GS66508B GaN^{PX}® package in demanding high-power and high efficiency applications.

1.2.2 IMS Board thermal design

An IMS board assembly uses metal as the PCB core, to which a dielectric layer and copper foil layers are bonded. The metal PCB core is often aluminum. The copper foil layers can be single or double-sided. An IMS board offers superior thermal conductivity to standard FR4 PCB. It's commonly used in high power, high current applications where most of heat is concentrated in a small footprint SMT device.

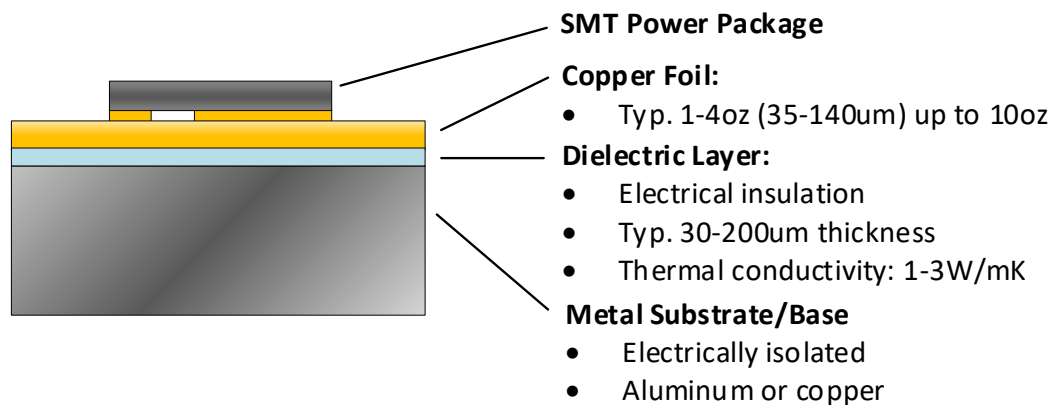


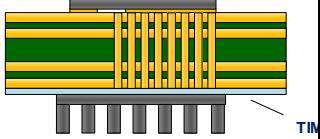
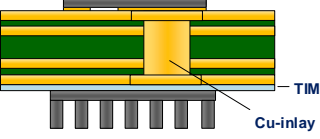
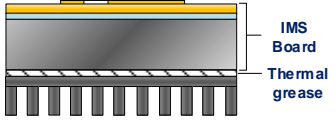
Figure 3 Cross-section view of a single layer IMS board

As high-speed Gallium Nitride power devices are adopted widely, the industry is trending away from through-hole packaging (TH), towards surface mount packaging (SMT). Traditional TH devices, such as the TO-220, are no longer the appropriate choice because their high parasitic inductance and capacitance negate the performance benefits offered by GaN E-HEMTs. SMT packaging, such as PQFN, D2PAK and GaN Systems' GaN^{PX}®, by comparison, offer low inductance and low thermal impedance, enabling efficient designs at high power and high switching frequency.

Thermal management of SMT power transistors must be approached differently than TH devices. TO packages are cooled by attaching them to a heatsink, with an intermediary Thermal Interface material (TIM) sheet for electrical high voltage insulation. The traditional cooling method for SMT power devices is to use thermal vias tied to multiple copper layers in a PCB. The IMS board presents designers with another option which is especially useful for high power applications. The IMS board has a much lower junction to heatsink thermal resistance (R_{thj-HS}) than FR4 PCBs, for efficient heat transfer out of the transistor. As well, assembly on an IMS board has lower assembly cost and risk than the TH alternative. The manual assembly process of a TO package onto a heatsink is costly and prone to human error.

Table 3 compares 3 different design approaches for cooling discrete SMT power devices. While the cost is lower for a FR4 PCB cooling with thermal vias, the IMS board offers the best performance for thermal management. Figure 4 provides a quantitative comparison of the thermal resistance for the 3 design options. The IMS board clearly comes out ahead.

Table 3 Performance comparison of 3 thermal design options for SMT power devices

	FR4 PCB Cooling with Vias	FR4 PCB with Cu inlay	IMS PCB
			
Thermal resistance	Good	Better	Best
Electrical Insulation	No, additional TIM needed	No, additional TIM needed	Yes
Cost	Lowest	High	Low
Advantages	<ul style="list-style-type: none"> • Standard process • Lowest cost • Layout flexibility 	<ul style="list-style-type: none"> • Layout flexibility • Improved thermal compared to thermal vias 	<ul style="list-style-type: none"> • Lowest thermal resistance • Electrically isolated
Design challenges	<ul style="list-style-type: none"> • High PCB thermal resistance 	<ul style="list-style-type: none"> • Cu-inlay surface coplanarity • High TIM thermal resistance 	<ul style="list-style-type: none"> • Layout limited to 1 layer • Parasitic inductance • Coupling capacitances to the metal substrate

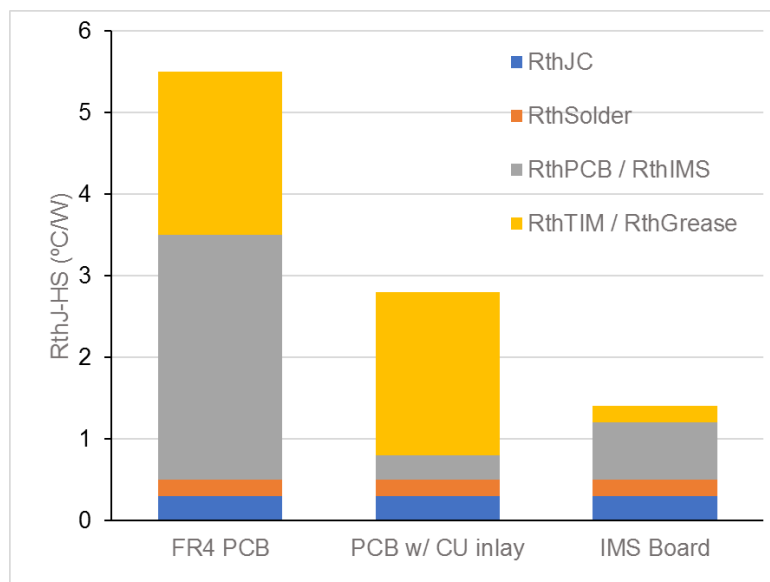


Figure 4 Comparison of Junction to Heatsink thermal resistance (R_{thJ-HS}) (Estimated based on GS66516B)

The following additional measures are taken to optimize the design further.

- The IMS 2 evaluation platform is implemented as a two-board assembly. The gate drive circuitry is assembled on the GSP665HPMB-EVBIMS2, a multi-layer FR4 PCB mother board. This includes the gate driver ICs, an isolated push-pull power supply to power the driver IC, and DC decoupling capacitors. The GaN E-HEMTs are mounted to the IMS half bridge board (GSP66508HB-EVBIMS2 and GSP66516B-EVBIMS2). This approach addresses the shortcomings of implementing the design on a single layer IMS board.
- While a large copper area is preferred to maximize heat spreading and handle high current, the area of copper at the switching node (high dv/dt) needs to be minimized to reduce the parasitic coupling capacitance to the metal substrate. An IMS board with thicker dielectric layer (100um) is chosen on this design to further reduce this effect.

1.3 IMS 2 Half Bridge Board Design

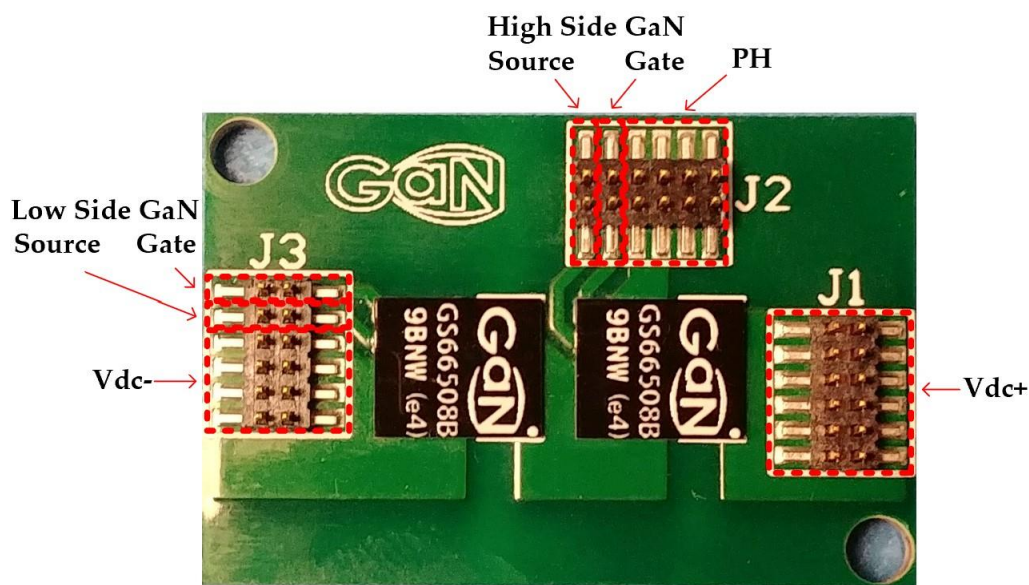


Figure 5 IMS 2 half bridge power board (GSP66508HB-EVBIMS2)

The IMS 2 half bridge power board is populated with the following components:

- **Q1 and Q2:** GS66516B or GS66508B E-HEMTs in a half bridge configuration.
 - 6kW GSP66516HB-EVBIMS2: Q1/Q2 GS66516B.
 - 3kW GSP66508HB-EVBIMS2: Q1/Q2 GS66508B.
- **J1, J2, J3:**
 - Connector Header Surface Mount 12 position 0.050" (1.27mm) (Samtec Inc., P/N: FTS-106-02-F-DV).
 - These terminals are designed to carry the main current and gate signals.

1.4 IMS 2 EVB Mother Board

GaN Systems offers a high-power IMS 2 evaluation board that can be purchased separately. The ordering part number is GSP665HPMB-EVBIMS2. It can be used as a platform for evaluating the IMS board in any half or full bridge topology.

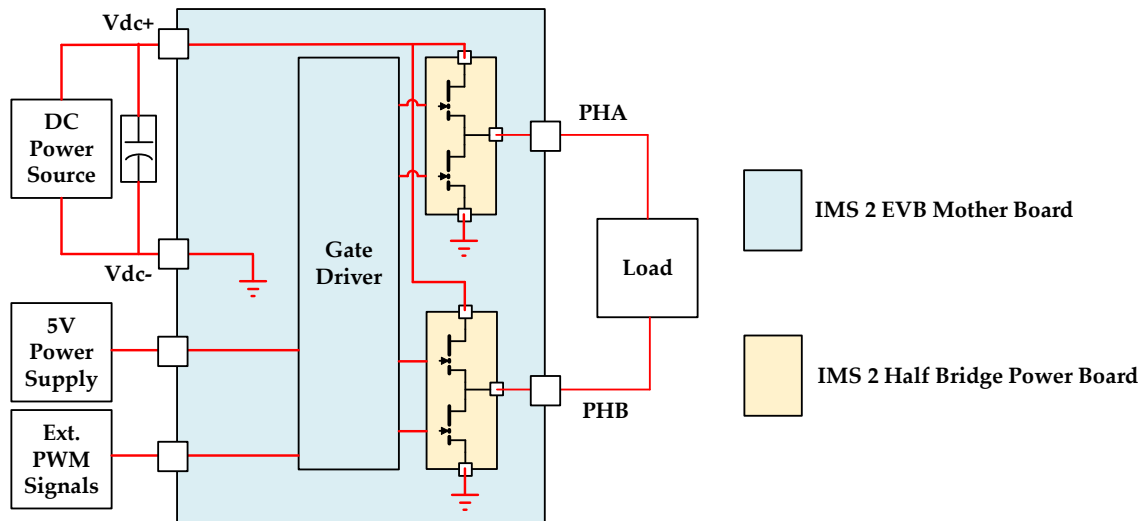


Figure 6 Circuit block diagram of IMS 2 EVB board

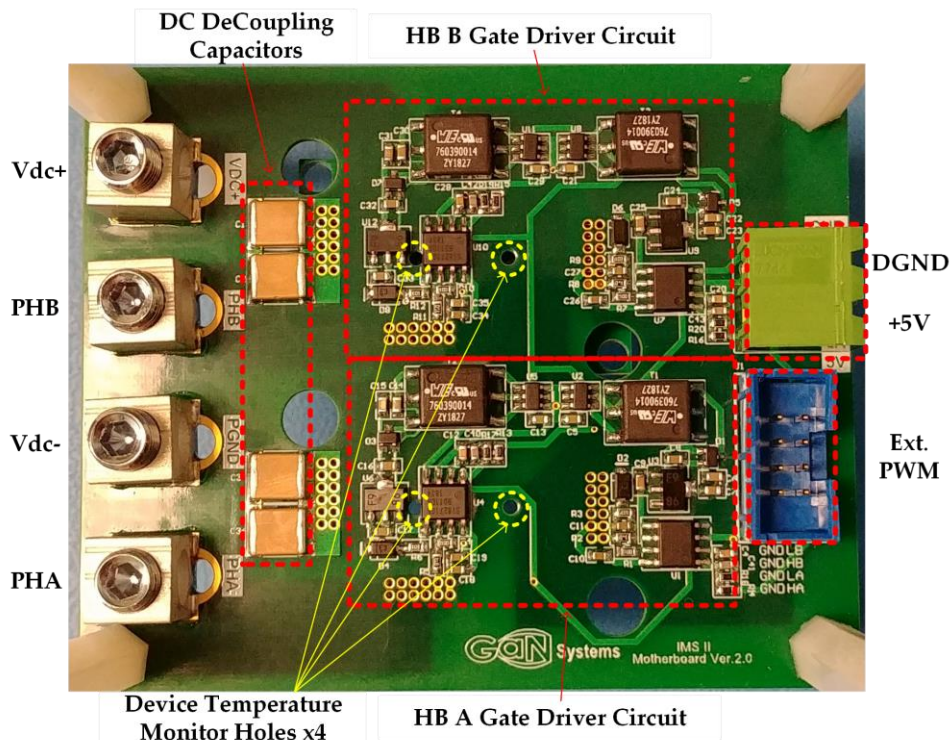


Figure 7 GSP665HPMB-EVBIMS2

1.4.4 External PWM Signals Input

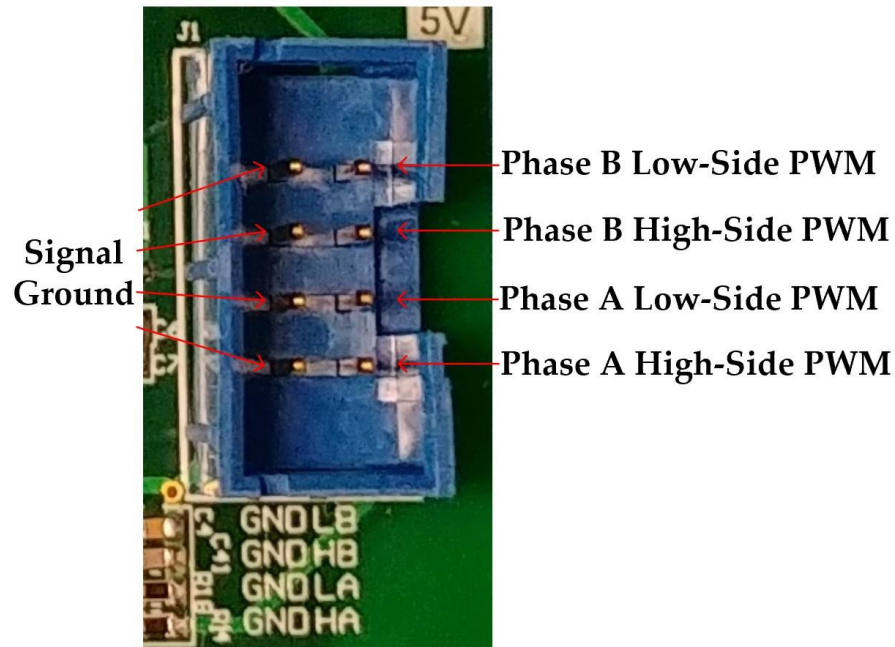


Figure 9 External PWM signals connector

The PWM signals of all four GaN devices come from the external PWM connector J1, as shown in Figure 9. The deadtime of PWM signals are required and should be provided from the external source.

1.4.5 Installation of IMS 2 Half Bridge Power Board

To achieve the lowest power loop parasitics, it is suggested to solder the IMS 2 half bridge power board to the IMS 2 EVB motherboard.

1.4.6 DC link decoupling capacitors

As it is challenging to create low inductance power loop on single-layer IMS board, DC decoupling capacitors are placed on multi-layer IMS 2 EVB PCB. The power loop path is highlighted as below.

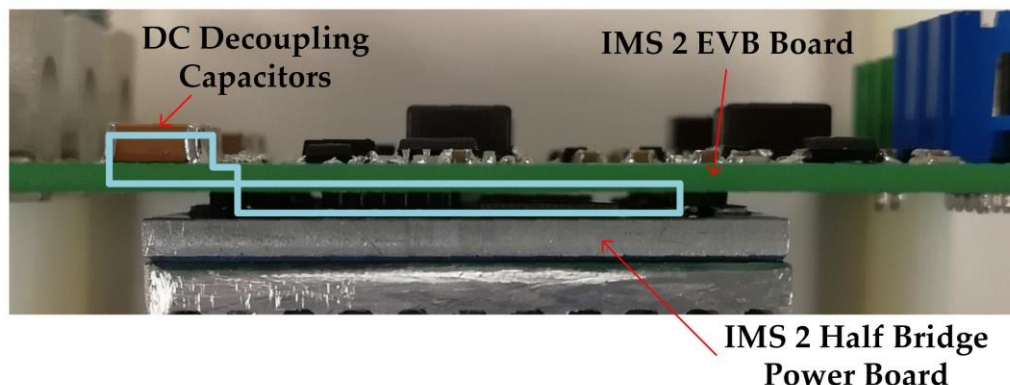


Figure 10 - Cross section view of IMS assembly showing the power Loop path

1.4.7 Operation modes

The Evaluation Platform can be configured into different topologies and operation modes as shown below

Table 4 Evaluation Platform Configurations

HALF BRIDGE	FULL BRIDGE	BOOST MODE
Double Pulse Test 	Full Bridge LLC 	Synchronous Boost DC/DC
Synchronous Buck DC/DC 	Phase Shift Full Bridge 	Totem Pole PFC
Half Bridge LLC 	Full Bridge Inverter 	Interleaved Totem Pole PFC
Single Phase Half Bridge Inverter 	DUAL ACTIVE BRIDGE Dual Active Bridge (with 2 mother boards) 	

2 Test Results

2.1 Double pulse test (GSP665HPMB-EVBIMS2 + GSP66508HB-EVBIMS2)

- Test condition: $V_{DS} = 400V$, $I_D = 30A$, $V_{GS} = +6V/-3V$, $L = 37\mu H$, No RC Snubber, $T_J = 25^\circ C$
- Measured peak $V_{DS} = 550V$ and $95.5V/ns$ peak dV/dt
- Reliable hard switching with GS66508B is achieved at full rated current

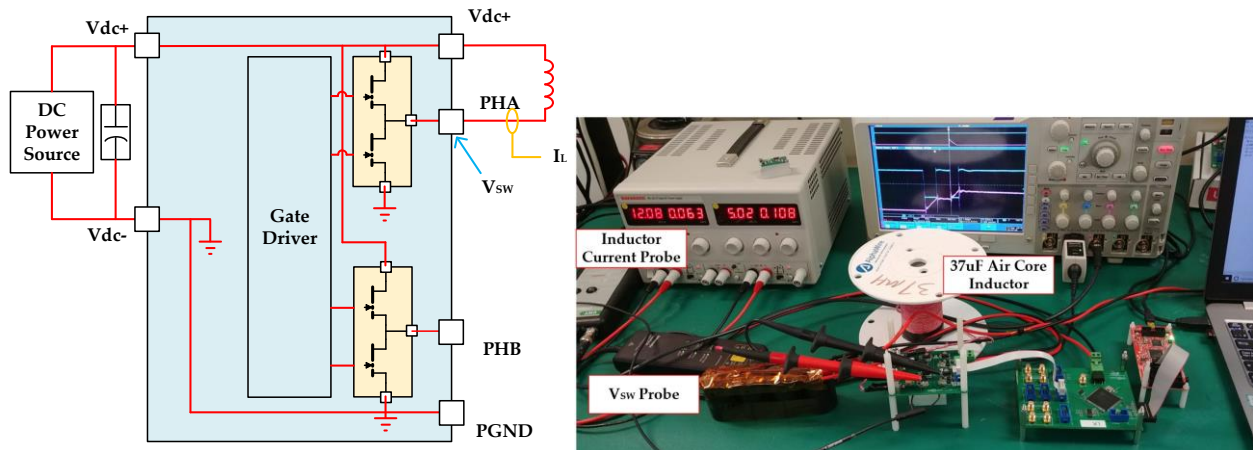


Figure 11 Double pulse test setup

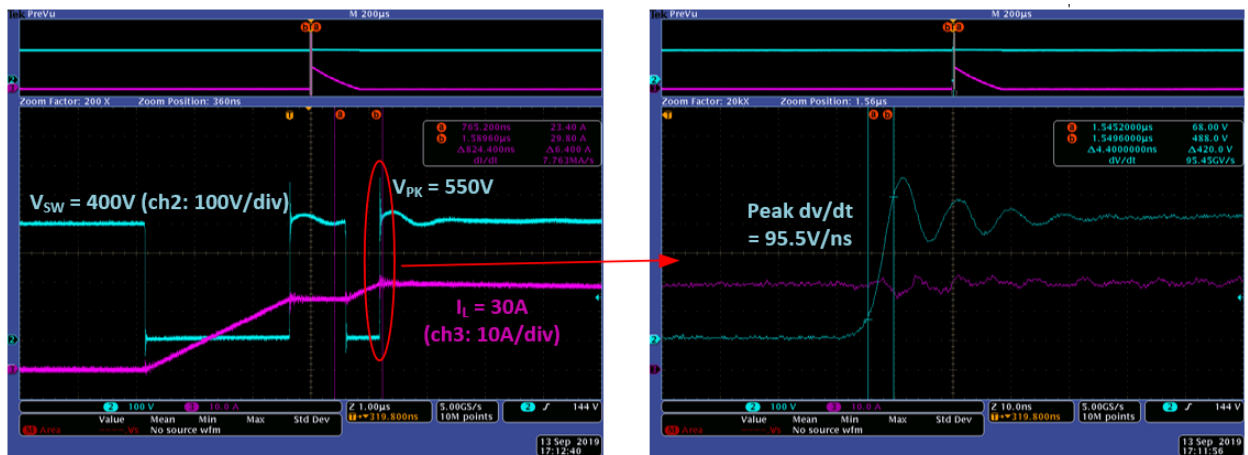


Figure 12 Double pulse test waveforms (400V/30A)

2.2 Full power emulation test (GSP665HPMB-EVBIMS2 + GSP66508HB-EVBIMS2)

- Test condition: $V_{IN} = 400V$, $f_{sw} = 500kHz$, $P_o = 1kW$, $T_{AMB} = 25^\circ C$.
- Device case temperature $57^\circ C$

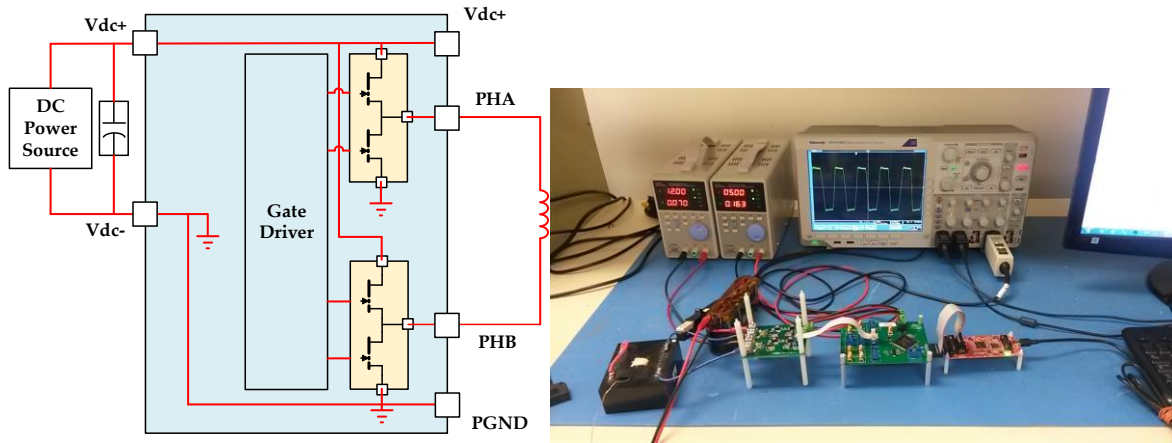


Figure 13 Full Power Emulation Test Setup

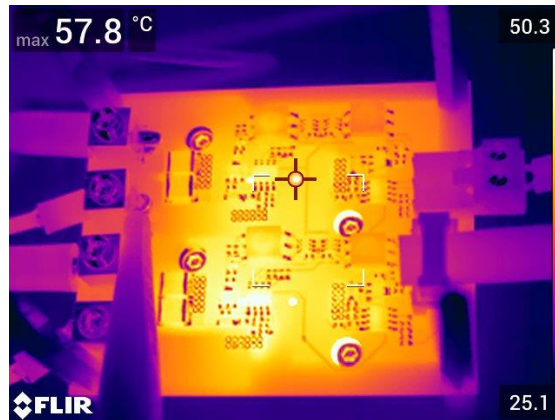
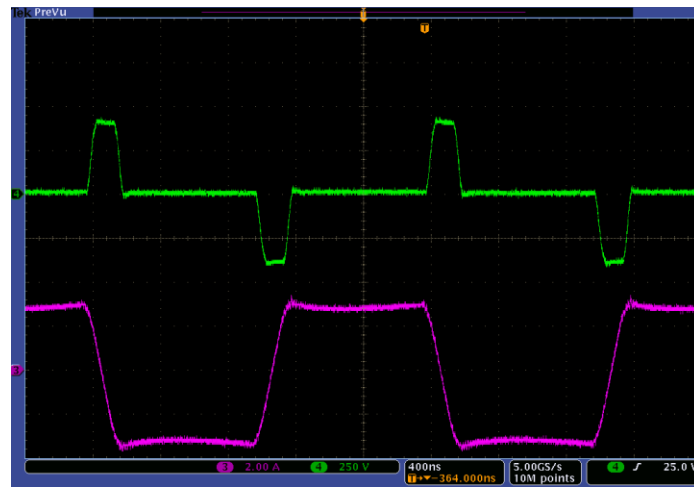


Figure 14 Full power emulation test thermal measurement result



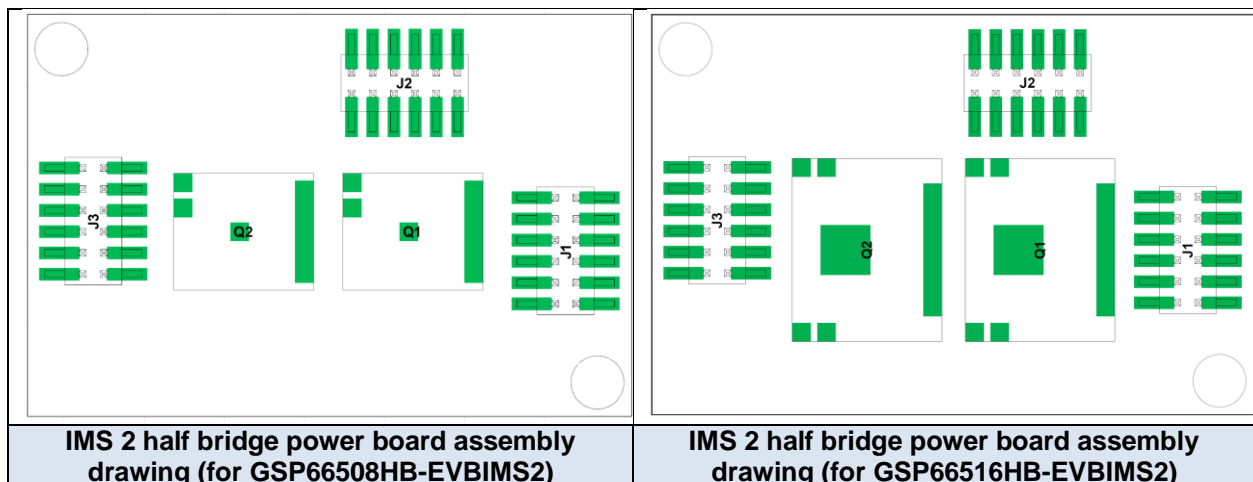
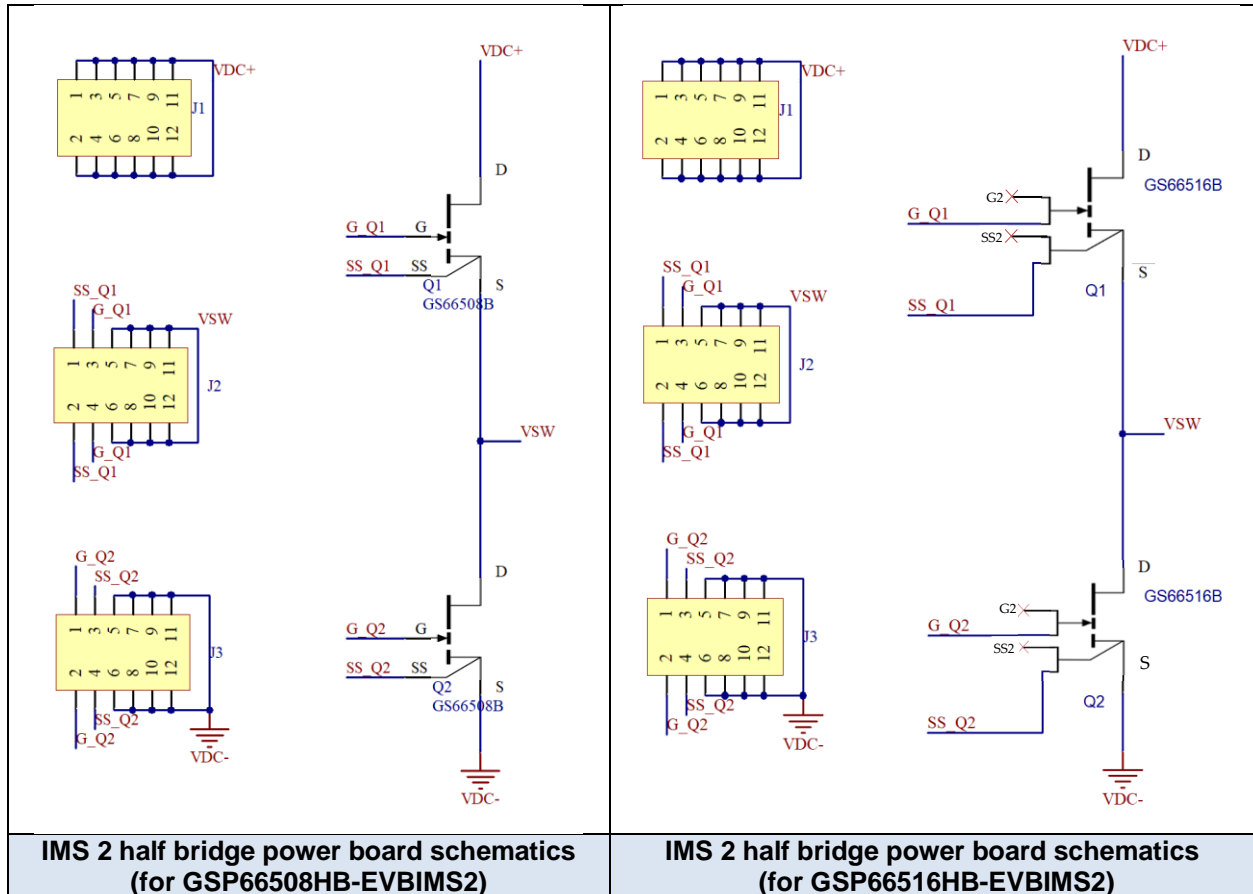
Ch#3 (purple): Inductor current, 2A/div

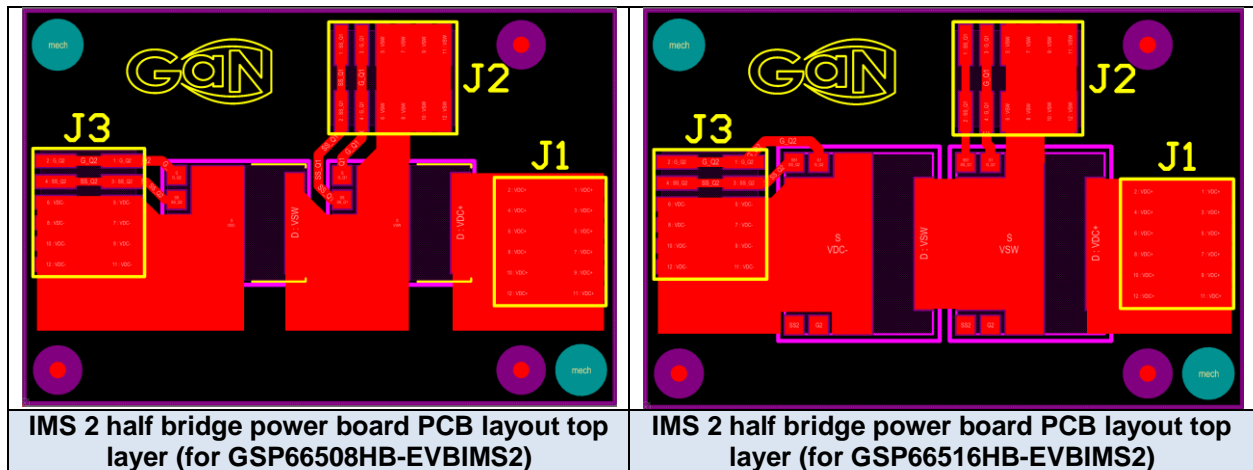
Ch#4 (green): Switching node Voltage, 250V/div

Figure 15 Test waveforms (400V_{in}, 500kHz, P_o=1.2kW)

3 Appendix

3.1 IMS 2 Half Bridge Power Board

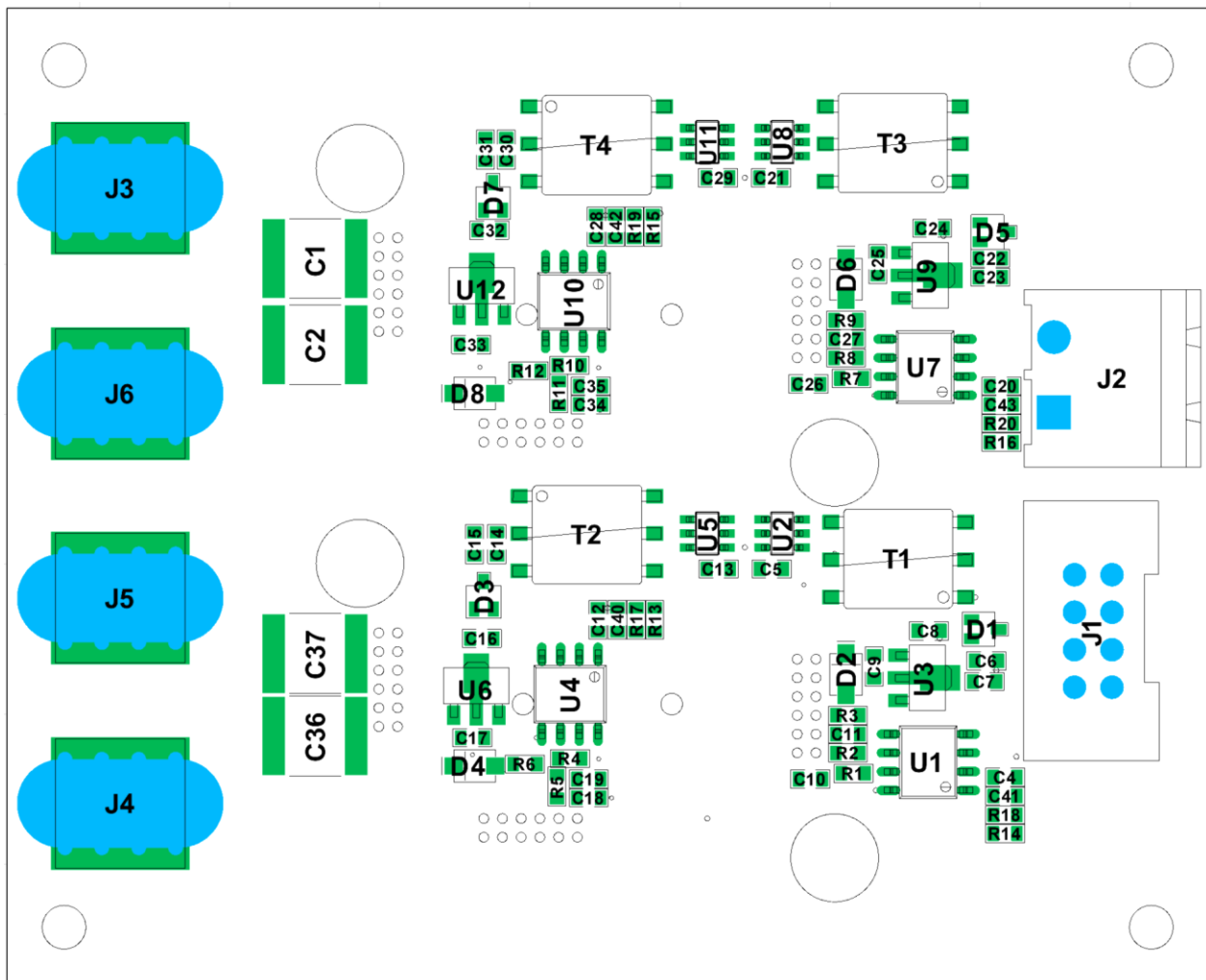




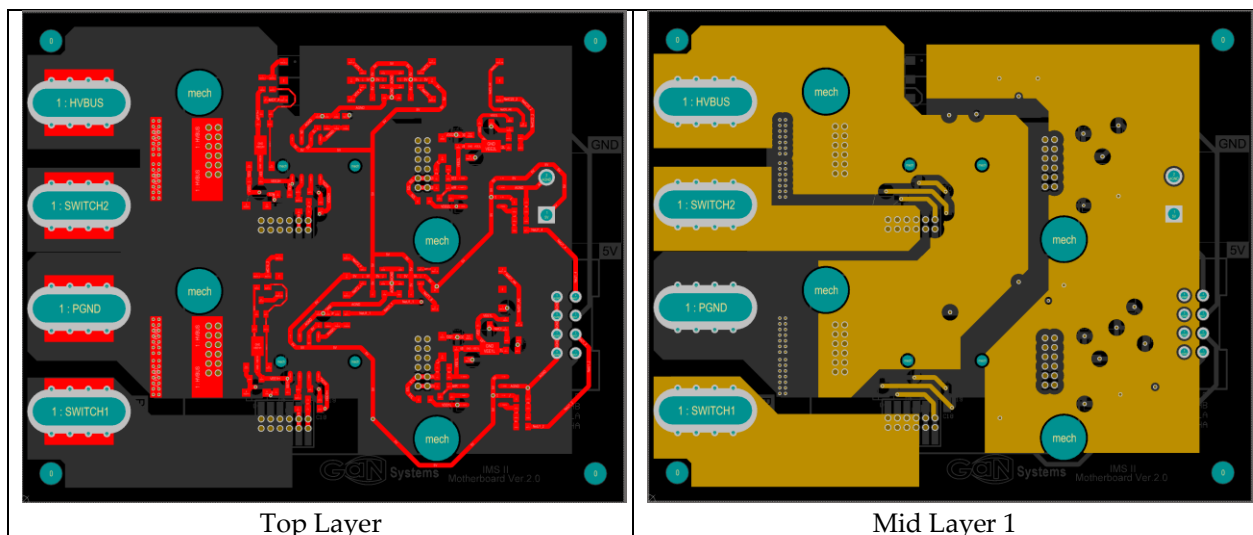
IMS 2 Half Bridge Power Board Bill of Materials (BOM)

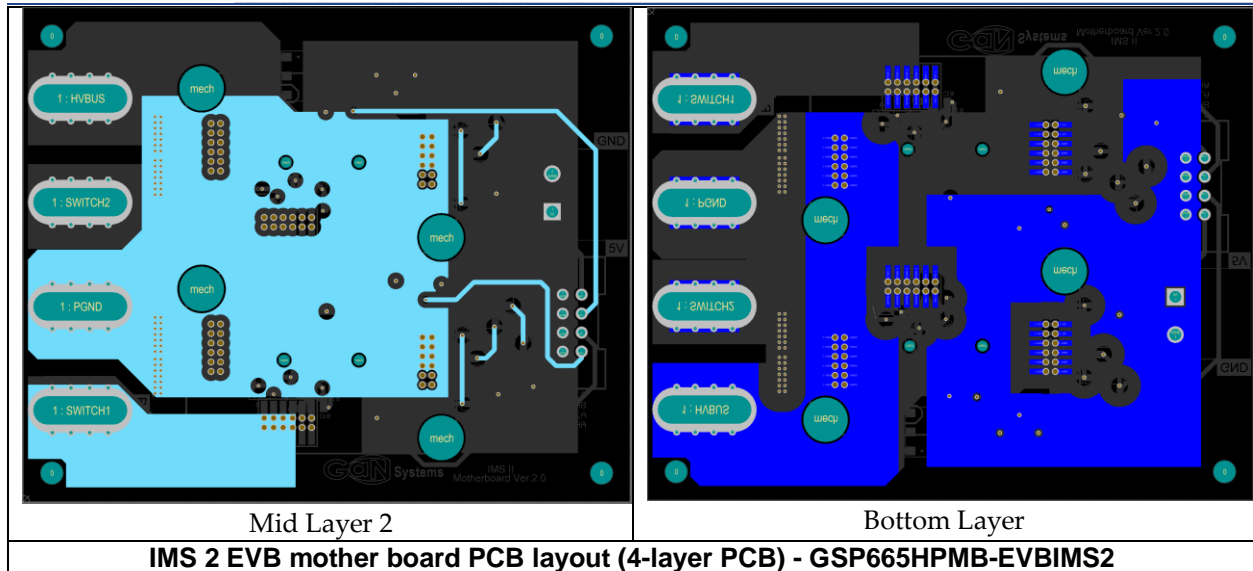
GSP66508HB-EVBIMS2					
Comment	Description	Designator	Quantity	Manufacturer	Manufacturer Part Number
FTS-106-02-X-DV	CONN HEADER SMD 12POS 1.27MM	J1, J2, J3	3	Samtec Inc.	FTS-106-02-F-DV
GS66508B	GAN TRANS E-MODE 650V 30A	Q1, Q2	2		
GSP66516HB-EVBIMS2					
Comment	Description	Designator	Quantity	Manufacturer	Manufacturer Part Number
FTS-106-02-X-DV	CONN HEADER SMD 12POS 1.27MM	J1, J2, J3	3	Samtec Inc.	FTS-106-02-F-DV
GS66516B	GAN TRANS E-MODE 650V 60A	Q1, Q2	2		

Please refer to the Evaluation Board/Kit Important Notice on page 22



IMS 2 EVB mother board assembly drawing (top layer) - GSP665HPMB-EVBIMS2





IMS 2 EVB mother board Bill of Materials (BOM) – GSP665HPMB-EVBIMS2

Designator	Description	Quantity	Manufacturer	Manufacturer Part Number
C1, C2, C36, C37	CAP CER 1UF 630V X7R 2220	4	KEMET	C2220X104KBRACAUTO
C4, C12, C20, C28	CAP CER 0.1UF 10V X7R 0603	4	Würth Electronics	885012206020
C5, C13, C21, C29	CAP CER 10UF 10V X5R 0603	4	Murata	GRM188R61A106KE69J
C6, C7, C8, C9, C14, C15, C16, C17, C22, C23, C24, C25, C30, C31, C32, C33	CAP CER 4.7UF 25V X5R 0603	16	Samsung	CL10A475MA8NQNC
C10, C11, C18, C19, C26, C27, C34, C35	CAP CER 1UF 10V X5R 0603	8	Samsung	CL10A105KP8NNNC
C40, C41, C42, C43	CAP CER 68PF 50V C0G/NP0 0603	4	Sams	CL10C680JB8NNNC
D1, D3, D5, D7	DIODE ARRAY SCHOTTKY 30V SOT323	4	ON Semiconductor / Fairchild	BAT54SWT1G
D2, D4, D6, D8	DIODE ZENER 6V 500MW SOD123	4	MCC	MMSZ5233B-TP
J1	CONN HEADER VERT 8POS 2.54MM	1	Amphenol FCI	75869-132LF
J2	TERM BLOCK HDR 2POS 90DEG 5.08MM	1	TE Connectivity	796638-2
J3, J4, J5, J6	6 AWG Lug	4	LugsDirect	B6A-PCB-HEX
R1, R4, R7, R10	RES SMD 10 OHM 5% 1/10W 0603	4	Panasonic	ERJ3GEYJ100V
R2, R5, R8, R11	RES SMD 1 OHM 5% 1/10W 0603	4	Panasonic	ERJ3GEYJ1R0V
R3, R6, R9, R12	RES SMD 10K OHM 5% 1/10W 0603	4	Panasonic	ERJ3GEYJ103V
R13, R14, R15, R16	RES SMD 49.9 OHM 1% 1/10W 0603	4	Panasonic	ERJ3EKF49R9V
R17, R18, R19, R20	RES SMD 49.9K OHM 1% 1/10W 0603	4	Panasonic	ERJ3EKF4992V
T1, T2, T3, T4	TRANSFORMER 475UH SMD	4	Würth Electronics	760390014
U1, U4, U7, U10	DGTL ISO 2.5KV GATE DRVR 8SOIC	4	Silicon Labs	SI8271GB-IS
U2, U5, U8, U11	Low-Noise 1 A, 420 kHz Transformer Driver, DBV0006A (SOT-6)	4	Texas Instruments	SN6505BDBVR
U3, U6, U9, U12	IC REG LINEAR 9V 100MA SOT89-3	4	Texas Instruments	UA78L09ACPK

Evaluation Board/kit Important Notice

GaN Systems Inc. (GaN Systems) provides the enclosed product(s) under the following **AS IS** conditions:

This evaluation board/kit being sold or provided by GaN Systems is intended for use for **ENGINEERING DEVELOPMENT, DEMONSTRATION, and OR EVALUATION PURPOSES ONLY** and is not considered by GaN Systems to be a finished end-product fit for general consumer use. As such, the goods being sold or provided are not intended to be complete in terms of required design-, marketing-, and/or manufacturing-related protective considerations, including but not limited to product safety and environmental measures typically found in end products that incorporate such semiconductor components or circuit boards. This evaluation board/kit does not fall within the scope of the European Union directives regarding electromagnetic compatibility, restricted substances (RoHS), recycling (WEEE), FCC, CE or UL, and therefore may not meet the technical requirements of these directives, or other related regulations.

If this evaluation board/kit does not meet the specifications indicated in the Technical Manual, the board/kit may be returned within 30 days from the date of delivery for a full refund. **THE FOREGOING WARRANTY IS THE EXCLUSIVE WARRANTY MADE BY THE SELLER TO BUYER AND IS IN LIEU OF ALL OTHER WARRANTIES, EXPRESSED, IMPLIED, OR STATUTORY, INCLUDING ANY WARRANTY OF MERCHANTABILITY OR FITNESS FOR ANY PARTICULAR PURPOSE. EXCEPT TO THE EXTENT OF THIS INDEMNITY, NEITHER PARTY SHALL BE LIABLE TO THE OTHER FOR ANY INDIRECT, SPECIAL, INCIDENTAL, OR CONSEQUENTIAL DAMAGES.**

The user assumes all responsibility and liability for proper and safe handling of the goods. Further, the user indemnifies GaN Systems from all claims arising from the handling or use of the goods. Due to the open construction of the product, it is the user's responsibility to take any and all appropriate precautions with regard to electrostatic discharge.

No License is granted under any patent right or other intellectual property right of GaN Systems whatsoever. **GaN Systems assumes no liability for applications assistance, customer product design, software performance, or infringement of patents or any other intellectual property rights of any kind.**

GaN Systems currently services a variety of customers for products around the world, and therefore this transaction **is not exclusive.**

Please read the Technical Manual and, specifically, the Warnings and Restrictions notice in the Technical Manual prior to handling the product. Persons handling the product(s) must have electronics training and observe good engineering practice standards.

This notice contains important safety information about temperatures and voltages. For further safety concerns, please contact a GaN Systems' application engineer.

www.gansystems.com

Important Notice – Unless expressly approved in writing by an authorized representative of GaN Systems, GaN Systems components are not designed, authorized or warranted for use in lifesaving, life sustaining, military, aircraft, or space applications, nor in products or systems where failure or malfunction may result in personal injury, death, or property or environmental damage. The information given in this document shall not in any event be regarded as a guarantee of performance. GaN Systems hereby disclaims any or all warranties and liabilities of any kind, including but not limited to warranties of non-infringement of intellectual property rights. All other brand and product names are trademarks or registered trademarks of their respective owners. Information provided herein is intended as a guide only and is subject to change without notice. The information contained herein or any use of such information does not grant, explicitly, or implicitly, to any party any patent rights, licenses, or any other intellectual property rights. General Sales and Terms Conditions apply.

© 2009-2019 GaN Systems Inc. All rights reserved.

Mouser Electronics

Authorized Distributor

Click to View Pricing, Inventory, Delivery & Lifecycle Information:

GaN Systems:

[GSP66516HB-EVBIMS2](#) [GSP665HPMB-EVBIMS2](#) [GSP66508HB-EVBIMS2](#)