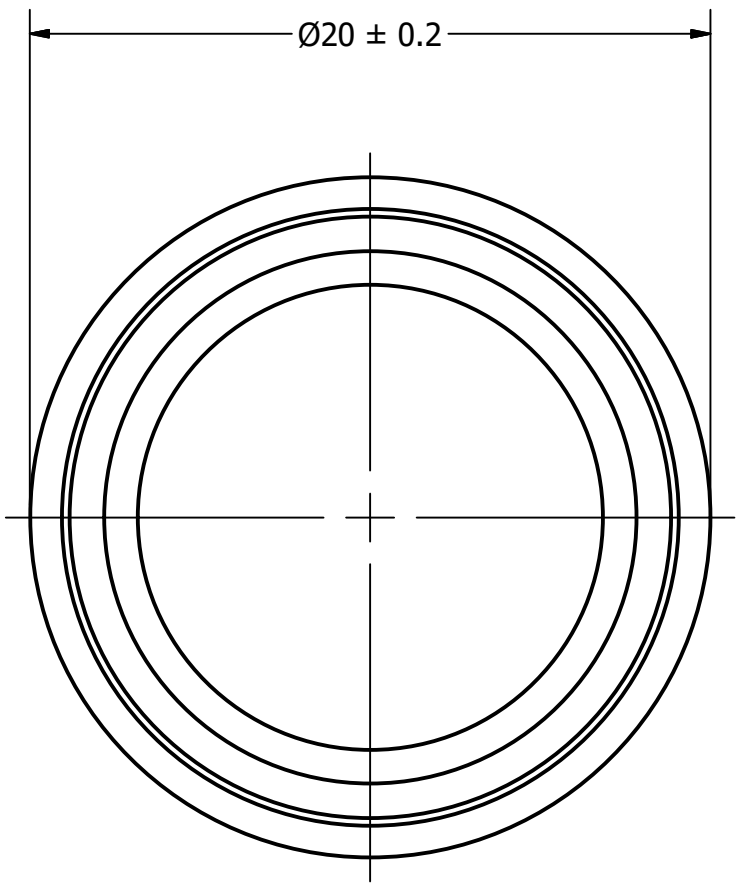
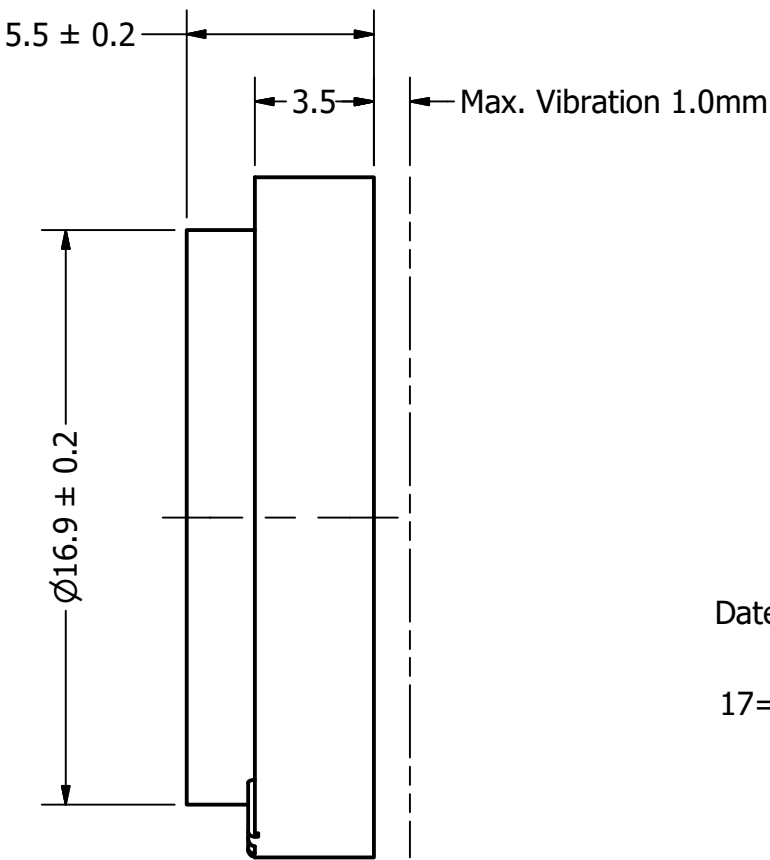


Part Number:	DRAWN	3/10/2017
	CJ	
	CHECKED	10/2/2017
Description:	P.D.	10/2/2017
	APPROVED	10/2/2017
	C.E.	
This document contains data proprietary to DB Unlimited. Any use or reproduction, in any form, without prior written permission of DB Unlimited is prohibited. All terms and conditions can be found at www.dbunlimitedco.com		

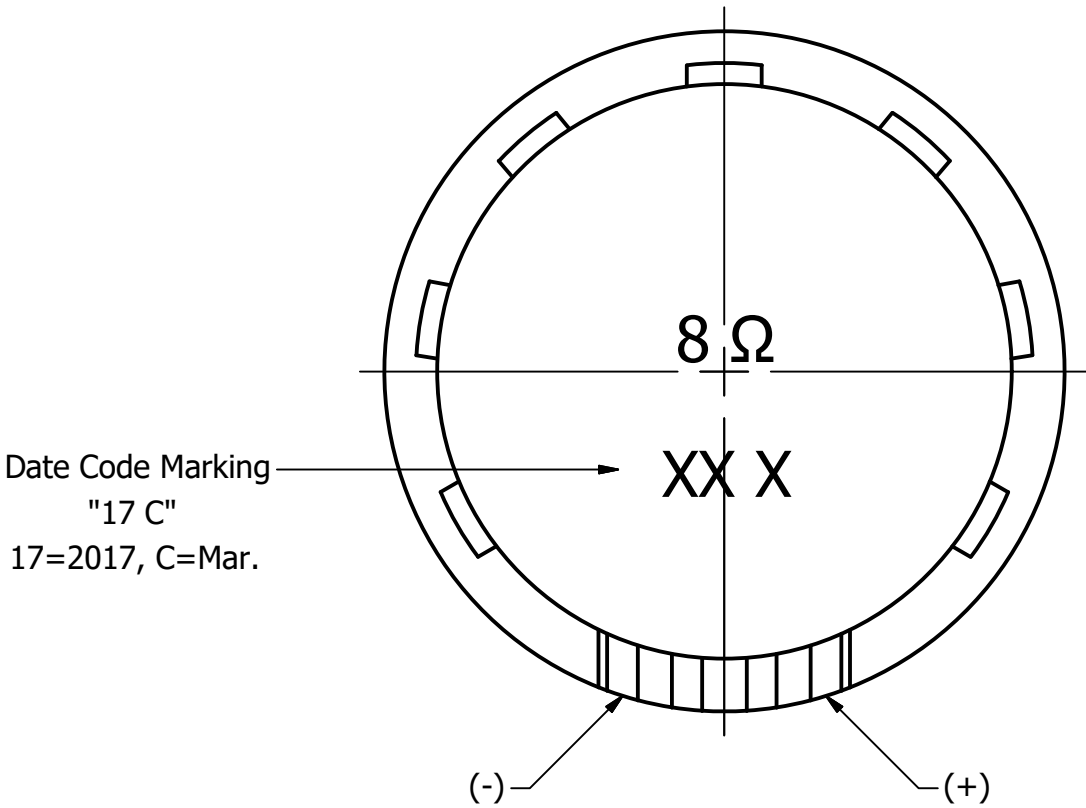
Top View



Side View



Bottom View



Items	Specifications	Conditions				
Sound Pressure Level	85	dB (@ 10cm), Avg.				
Resonant Frequency	500	Hz				
Frequency Range	500 ~ 10,000	Hz				
Nominal Power	1.5	W				
Max. Power	2	W				
Impedance	8	Ω				
Cone Material	PU + PEI					
Mount Type	Flush Mount					
IP Rating	IP67					
Storage Temperature	-20 ~ +55	°C				
Operating Temperature	-20 ~ +55	°C				
Weight	4.02	g				

REVISION HISTORY			
REV	DESCRIPTION	DATE	APPROVED
	Released from Engineering	10/2/2017	C.E.

NOTES	
1) All dimensions are in mm unless otherwise noted	
2) All tolerances are ± 0.3 mm unless otherwise noted	
3) All parts meet RoHS	
4) Subject to change or redrawn without notice	

Mouser Electronics

Authorized Distributor

Click to View Pricing, Inventory, Delivery & Lifecycle Information:

[DB Unlimited:](#)

[SW200508-1](#)