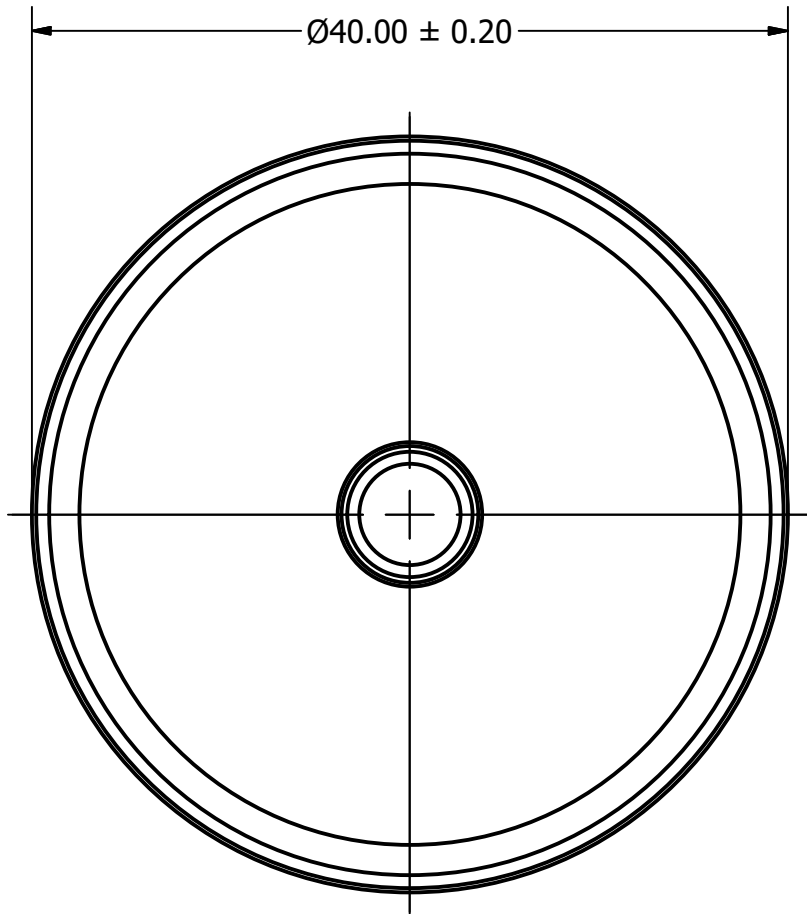




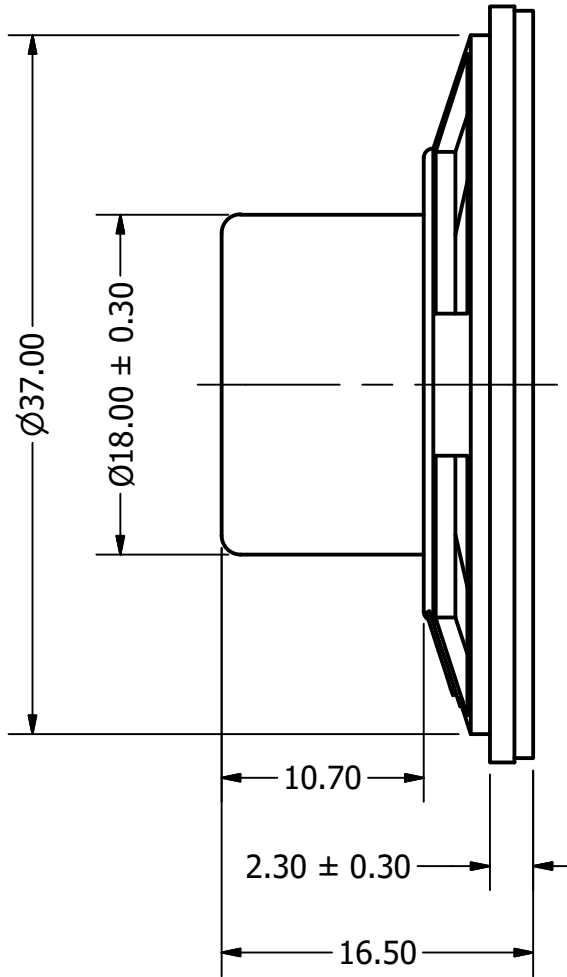
DB UNLIMITED

Part Number:	1	
	DRAWN	8/4/2016
	CJ	
Description:	CHECKED	8/4/2016
	P.D.	
	APPROVED	8/4/2016
J.S.		
This document contains data proprietary to DB Unlimited. Any use or reproduction, in any form, without prior written permission of DB Unlimited is prohibited. All terms and conditions can be found at www.dbunlimitedco.com		

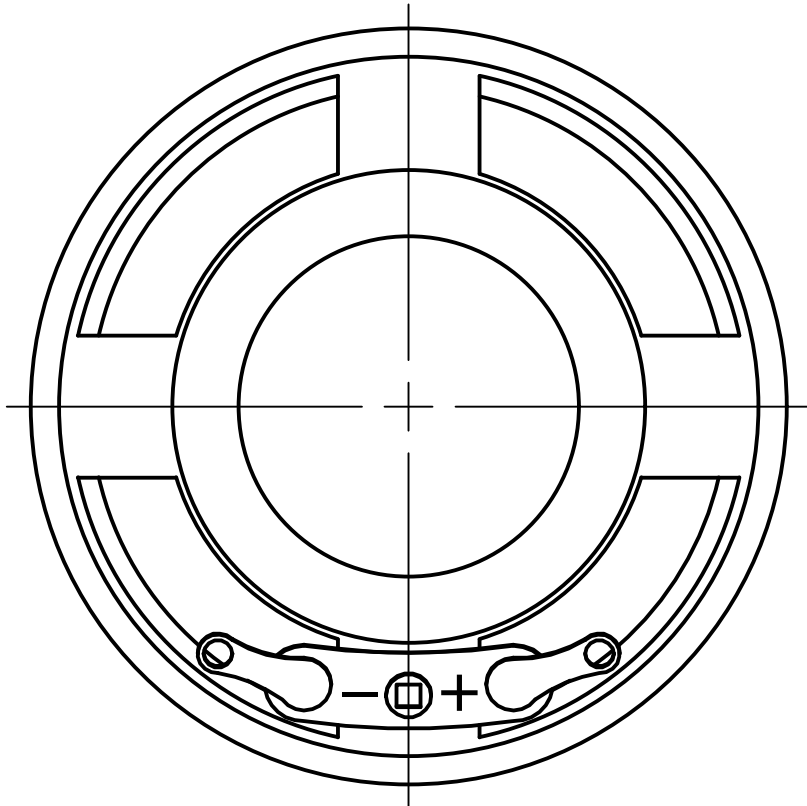
Top View



Side View



Bottom View



Items	Specifications	Conditions	REVISION HISTORY			
Sound Pressure Level	98 ± 3	dB (@ 10cm)	REV	DESCRIPTION	DATE	APPROVED
Resonant Frequency	850	Hz		Released from Engineering	10/21/2013	J.S.
Frequency Range	850 ~ 7,000	Hz	1	Updated to new template	8/4/2016	J.S.
Nominal Power	0.25	W	2	Corrected SPL	5/22/2017	C.E.
Max. Power	0.5	W	3	Added Polarity	12/28/2017	C.E.
Impedance	16	Ω	NOTES			
Cone Material	Paper		1) All dimensions are in mm unless otherwise noted			
Mount Type	Flush Mount		2) All tolerances are ± 0.5 mm unless otherwise noted			
Storage Temperature	-25 ~ +55	°C	3) All parts meet RoHS			
Operating Temperature	-25 ~ +55	°C	4) Subject to change or redrawn without notice			
Weight	10	g				

Mouser Electronics

Authorized Distributor

Click to View Pricing, Inventory, Delivery & Lifecycle Information:

[DB Unlimited:](#)

[SP400816-1](#)