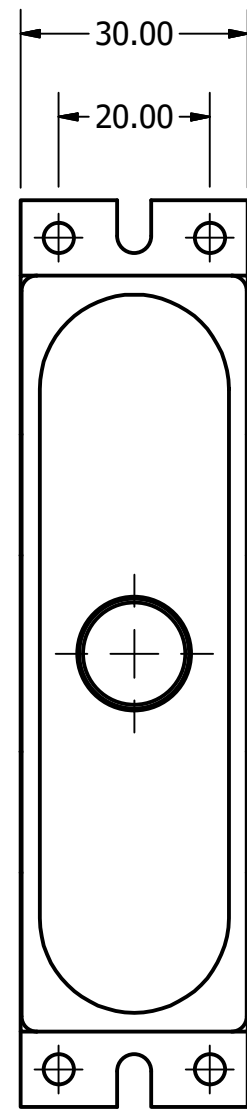
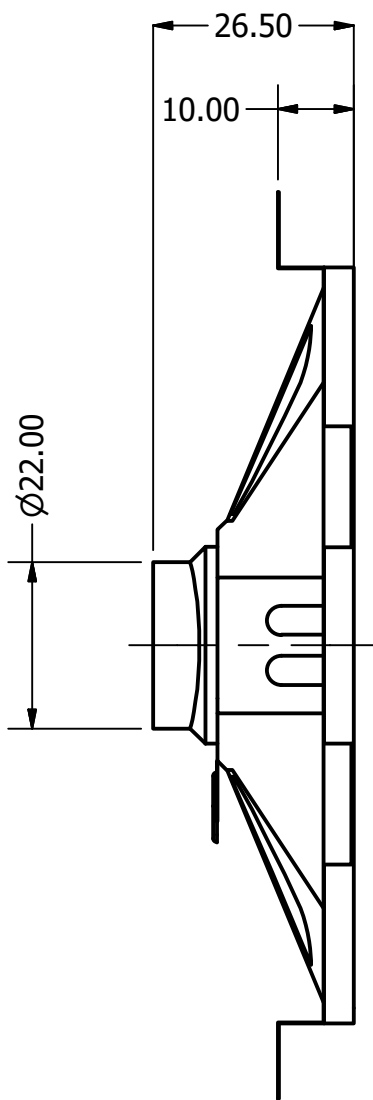


Part Number:	DRAWN	4/10/2016
	CJ	
	CHECKED	4/11/2016
Description:	P.D.	J.S.
	APPROVED	4/11/2016
This document contains data proprietary to DB Unlimited. Any use or reproduction, in any form, without prior written permission of DB Unlimited is prohibited. All terms and conditions can be found at www.dbunlimitedco.com		

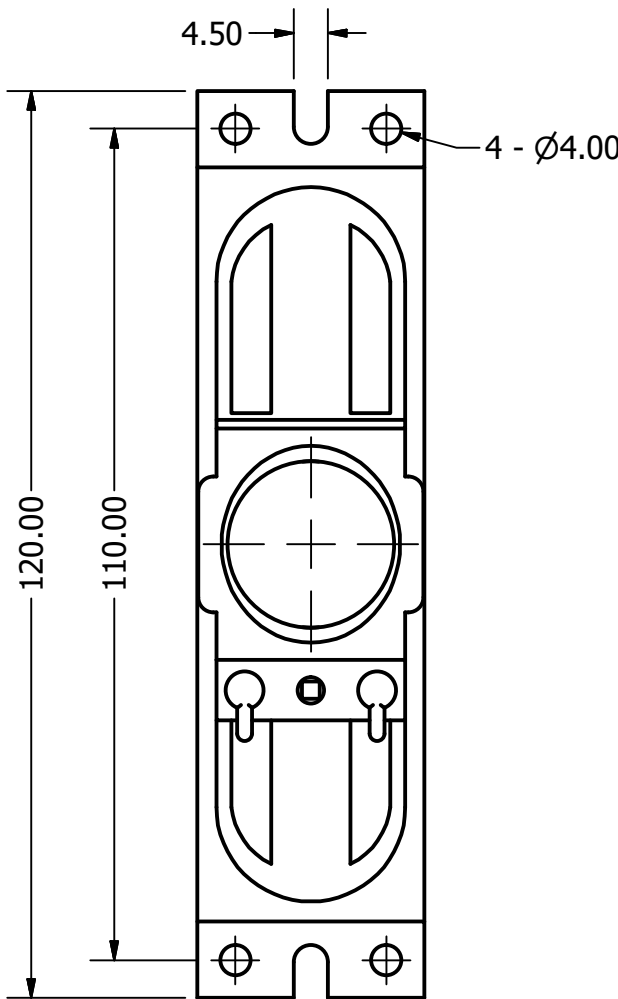
Top View



Side View



Bottom View



Items		Specifications	Conditions	REVISION HISTORY		
Sound Pressure Level		97	dB (@ 10cm)	REV	DESCRIPTION	DATE
Resonant Frequency		320	Hz		Released from Engineering	10/21/2013
Frequency Range		320 ~ 7,000	Hz		Updated to new template	4/11/2016
Nominal Power		5	W	1	Corrected SPL	5/22/2017
Max. Power		8	W	2		
Impedance		8	Ω			
Cone Material		Paper		NOTES		
Mount Type		Frame Mount		1) All dimensions are in mm unless otherwise noted		
Storage Temperature		-25 ~ +55	°C	2) All tolerances are ± 0.5 mm unless otherwise noted		
Operating Temperature		-25 ~ +55	°C	3) All parts meet RoHS		
Weight		41	g	4) Subject to change or redrawn without notice		

Mouser Electronics

Authorized Distributor

Click to View Pricing, Inventory, Delivery & Lifecycle Information:

[DB Unlimited:](#)

[SP1200308-1](#)